

# The Character House Garden

Catherine Brouwer

Catherine Brouwer Landscape Architects

Ipswich City Council • Heritage Week Seminar

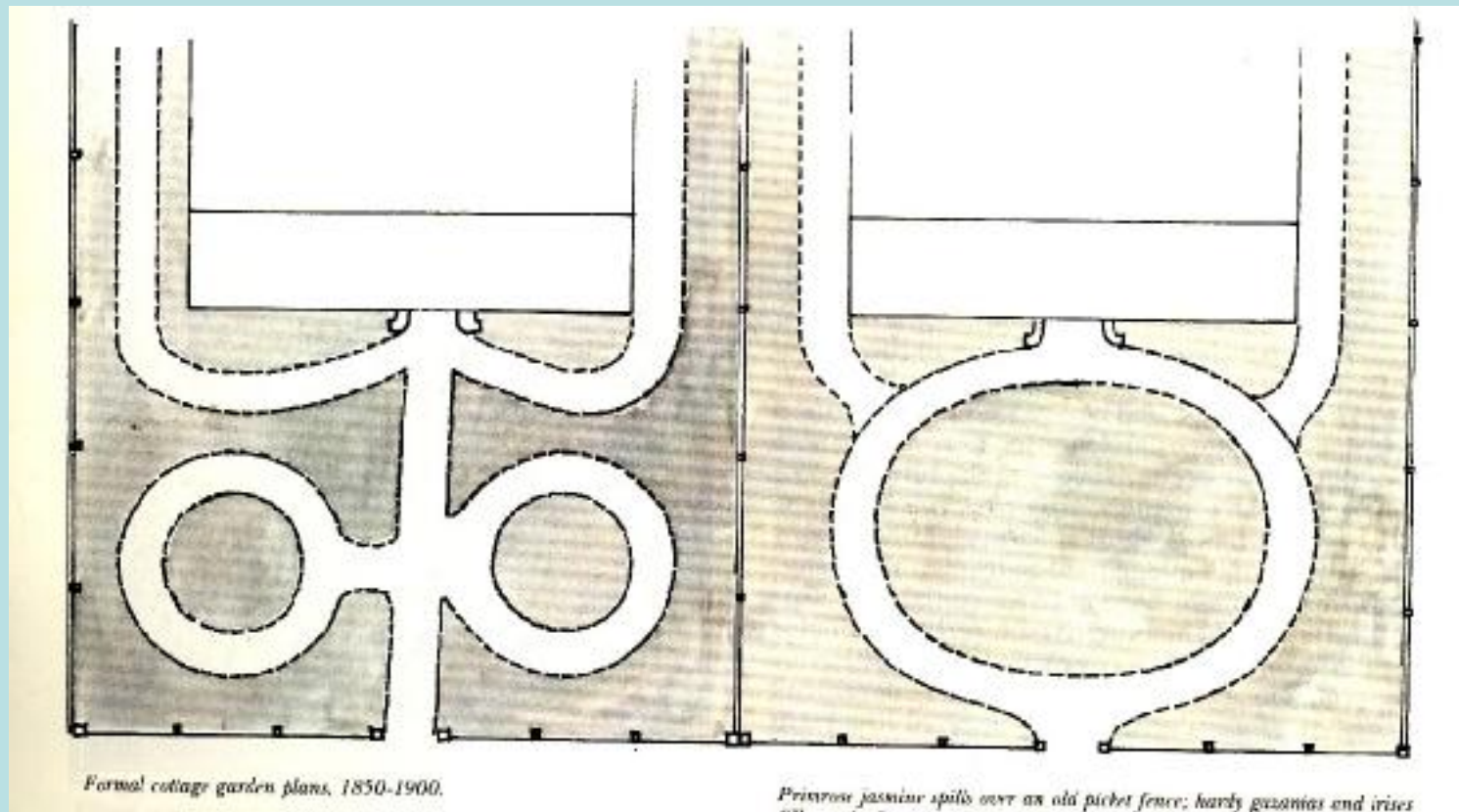
# The Character House Garden

- Understanding the historical or earlier garden.
- The appropriate character garden.
- When to follow the heritage direction.
- Renewing the traditional or character garden.
- Examples.

# understanding the historical or earlier garden garden types



# The cottage garden



*Formal cottage garden plans, 1850-1900.*

*Primrose jasmine spills over an old picket fence; hardy geraniums and irises*

The above drawing is from 'Cottage Gardens in Australia'  
by Peter Cuffley, The Five Mile Press, 1989.



A simple, cottage front garden



Waiting for a garden



A little too much garden

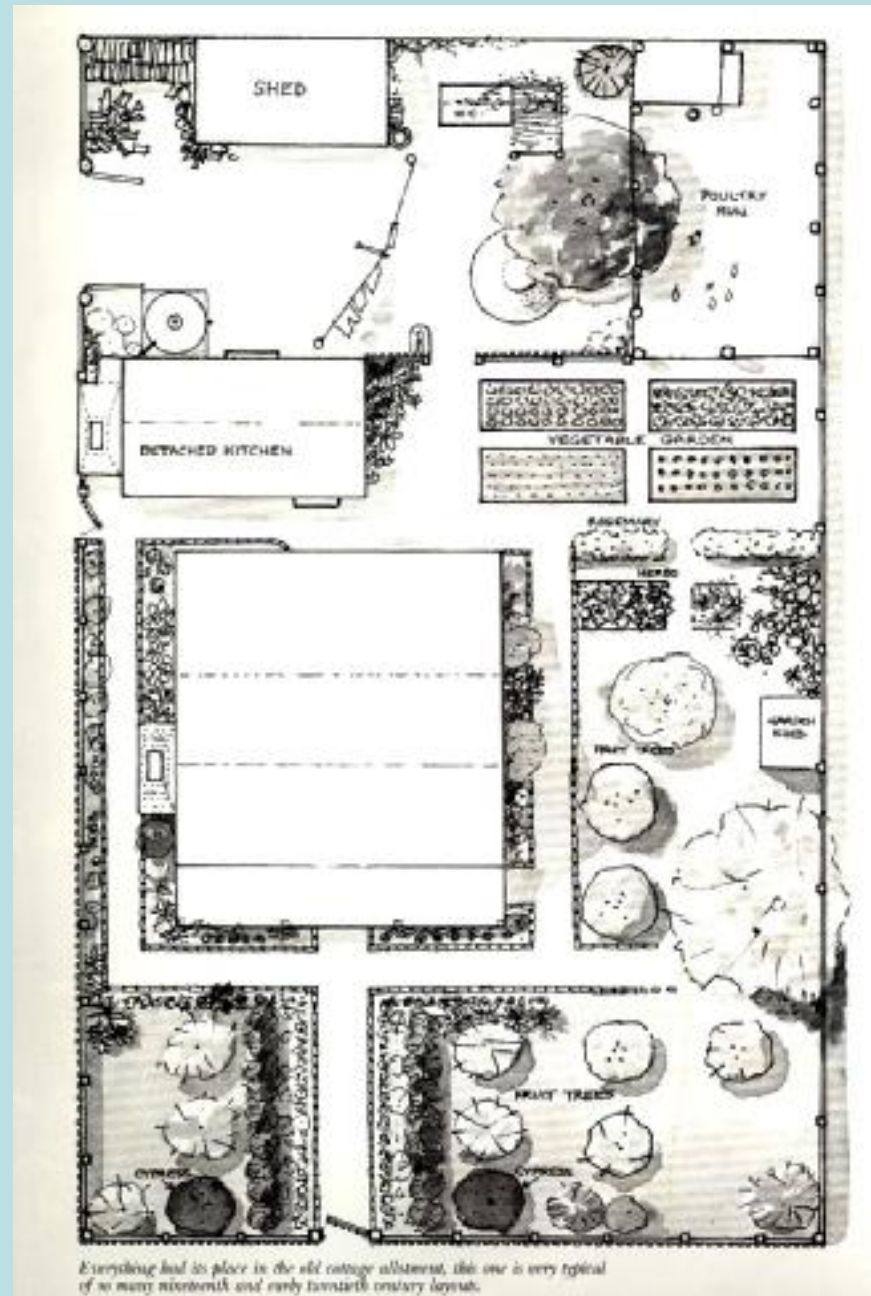


The large urban residence garden



# The suburban garden

This plan drawing is from 'Parks Gardens and Special Trees' by Juliet Ramsay for the Australian Heritage Commission AGPS, 1991.

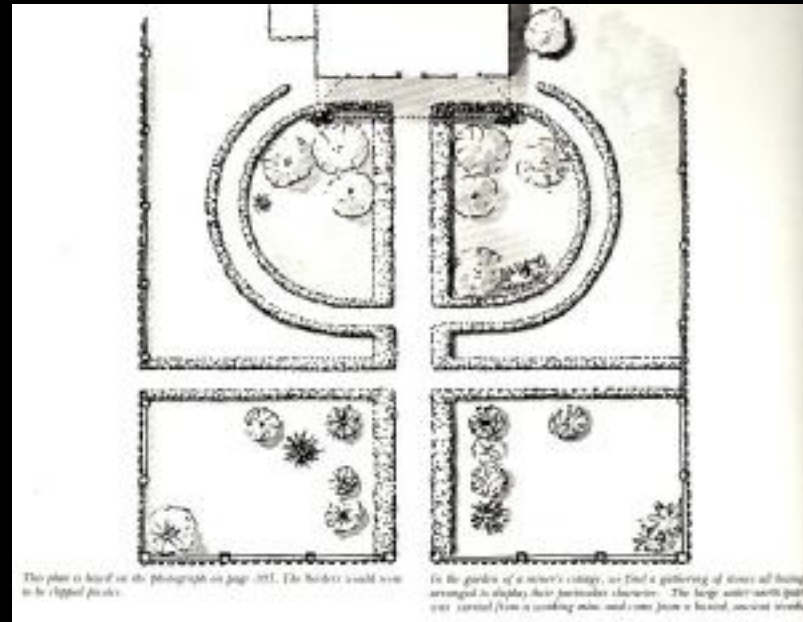


# understanding the historical or earlier garden garden style





This plan drawing is from 'Parks Gardens and Special Trees' by Juliet Ramsay for the Australian Heritage Commission AGPS, 1991.



## Squared Gardens

Gardens of squared areas.

- cultivation of crops and vegetables, - flower picking.

Style continues in nurseries and market gardens.

## Geometric

In most Australian gardens.

- Hedged beds, gravel, brick or stone paths with brick or stone sided drains.
- Fences of stone and picket.
- Late 19<sup>th</sup> century: paths, fences, & gates follow current trends.
- Gardenesque planting of feature plants: aloes, yuccas, palms introduced.

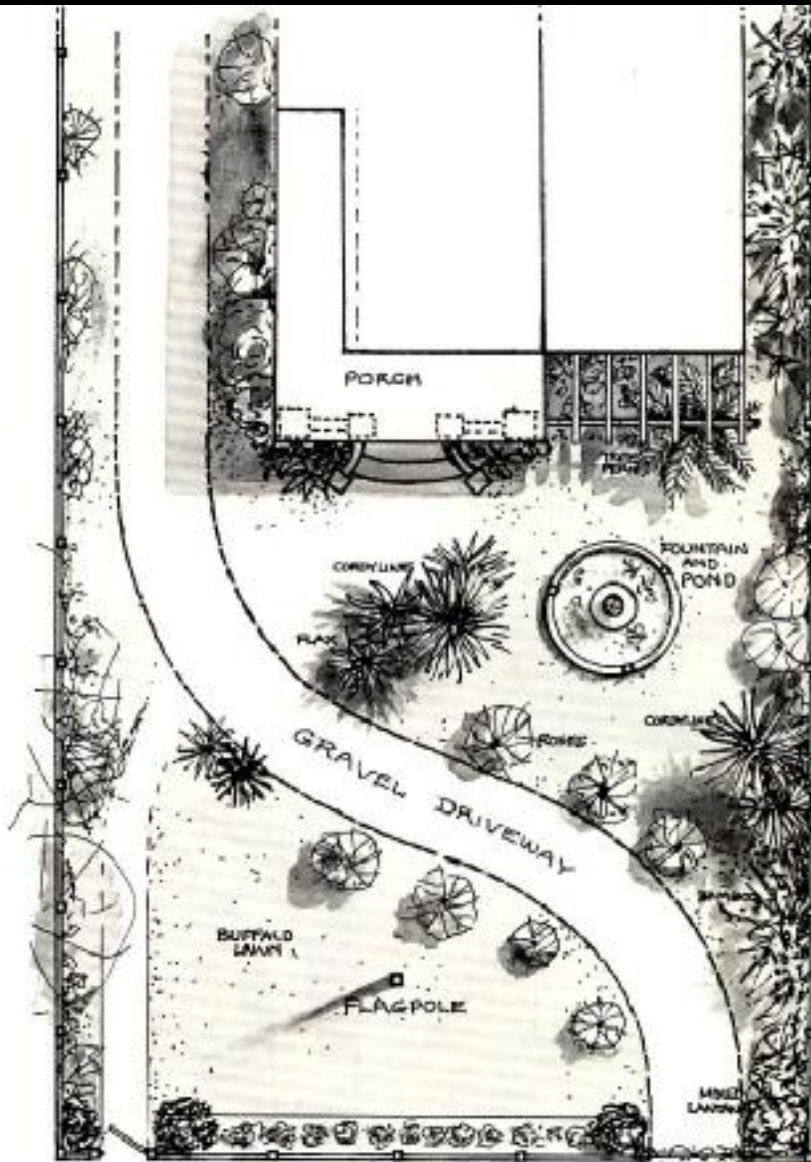
## Arcadian influence

Influenced by English landscape garden style, - scenes of pastoral and parkland harmony.

- Native trees, large eucalyptus valued.
- Gardens had simple curved spatial outlines with shrubberies, avenue planting, and carriage turning circle.

## Picturesque

A combination of wild natural landscape with exaggerated architecture of elements: dovecotes, rustic bridges, and feature planting: pines, bamboos.



*The plan of the garden (opposite), shows the influence of the Gardenesque movement which remained a recognizable element in the 1930s, a century after it began.*

This plan drawing is from 'Parks Gardens and Special Trees' by Juliet Ramsay for the Australian Heritage Commission AGPS, 1991.

## Gardenesque

Lawns, shrubberies, flower borders, carpet bedding.

- Beds and lawns are geometric, with neat curving paths.
- Ornaments and plant features for accent.

## Paradise

Richness of form, texture, and colour by the use of subtropical & tropical plants with palms, in contrast to the natural environment.





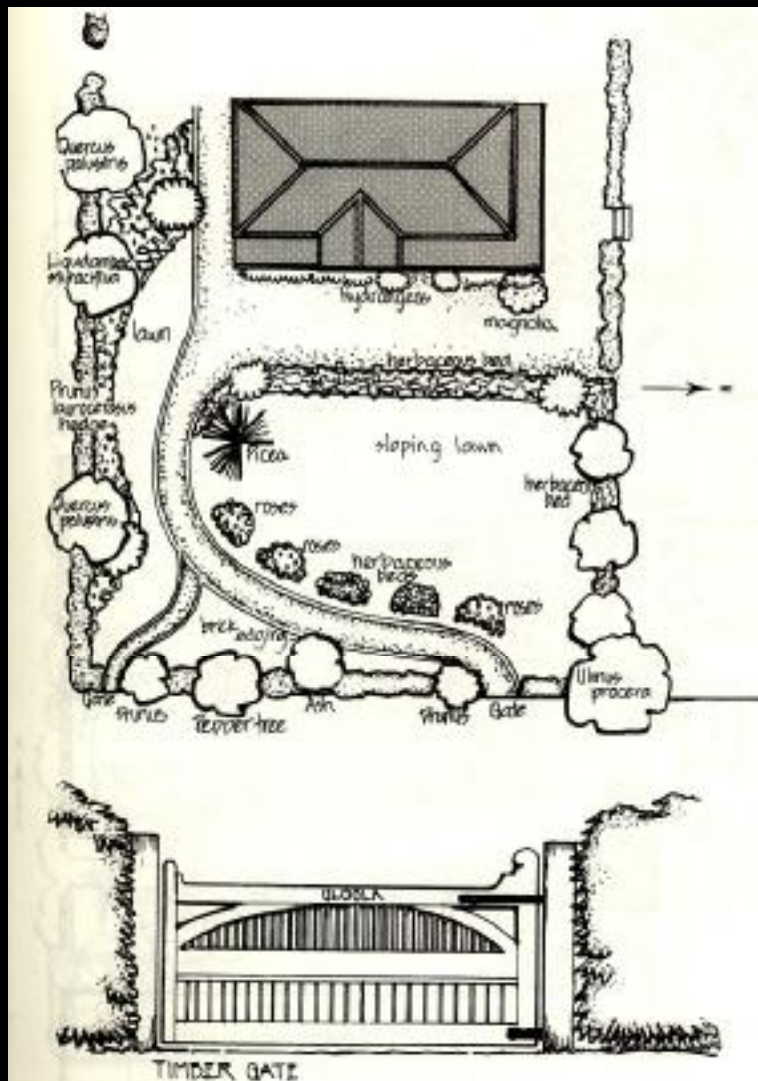


Figure 13

ULOOLA's large urban-residence garden was created in 1908. The style, distinctively Federation, is demonstrated by the sweeping curved carriageway, the large sloping lawn with cut-in flowerbeds, colourful foundation planting and a timber-panelled gate.

Drawing from file plan and photos recorded by J. Broadbent 1979 for the Australian Heritage Commission.

## Federation

Garden suburbs. - Large lawn areas, bush houses, variety of plant material, fences painted timber.

3 sub styles:

1) *Geometric*: - boundary walls, hedges and creeper covered fences. Division into rectangular spaces - the pleasure garden, kitchen garden, drying garden, orchard, tennis court.

2) *Informal or Natural*: - sense of enclosure but flowing of spaces into each other, curved paths, sweeping lawns

3) *Mixed style*: - garden rooms, buffalo grass lawns, S shaped main path, specimen trees, planting close to the house.

This plan drawing is from 'Parks Gardens and Special Trees' by Juliet Ramsay for the Australian Heritage Commission AGPS, 1991.

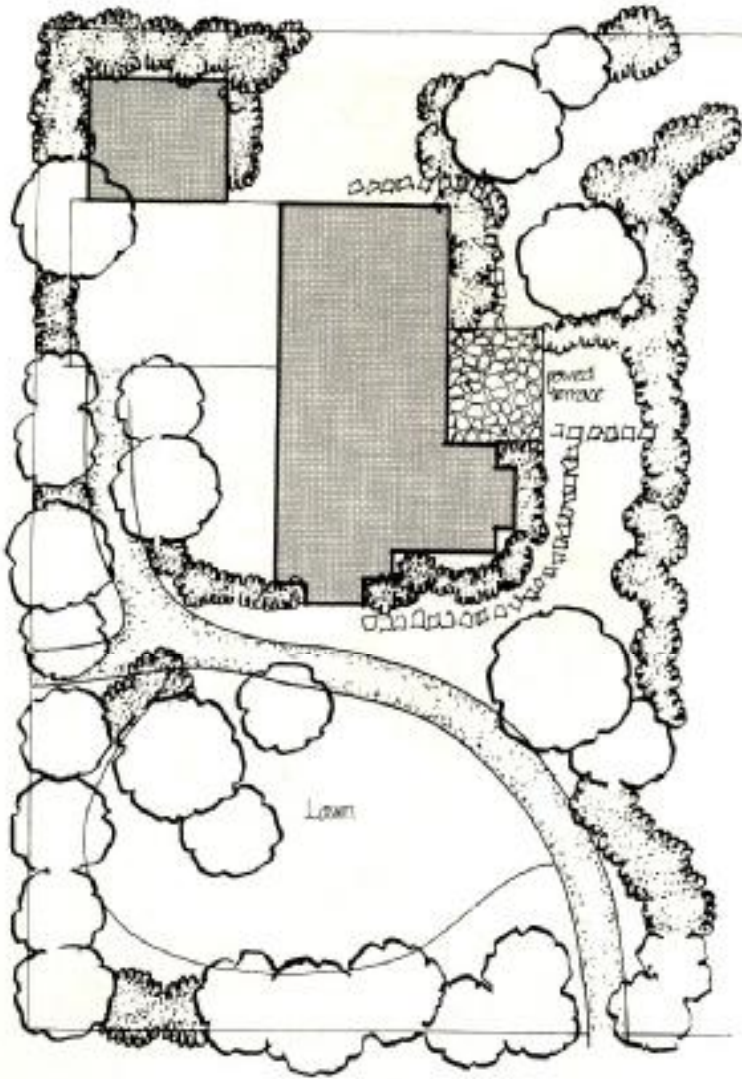


Figure 17

A large Adelaide urban-residence garden, designed by Edna Walling and established in 1939. Its compartmentalised areas, heavy border planting, informally grouped trees, shrubs and natural stone paving reflect the influence of the Edwardian style.

*Drawing from file plan, Australian Heritage Commission.*

## Edwardian

Garden style extended beyond the historic era.

- Geometric lay out with compartmentalized spaces.
- Water features, lily ponds.
- Shade houses, garden furniture, flagged paths.
- Informally planted beds.
- Around early 20<sup>th</sup> century revival or Arts & crafts houses.

This plan drawing is from 'Parks Gardens and Special Trees' by Juliet Ramsay for the Australian Heritage Commission AGPS, 1991.





## Bungalow - 1920s

Associated with Californian bungalow architecture.

- Native trees retained and planted.
- paths stone flagged.
- *Hydrangeas* and *Rhododendrons* remained.
- Wire fences & pipe gate, - brick walls to match house.
- White trunked and red flowering gums.

## City beautiful - art deco

- Groups of trees in sweeping lawns.
- Formal arrangements.

## Inter-war domestic

Evolved from the Federation and Edwardian.

- Hedges disappeared & front gardens designed for display of the house.
- Simple neat front garden, rear utilitarian.



understanding the historical or earlier garden  
the garden's historical form or structure



Understanding your garden  
historical form or structure

## The front garden

- Setback from the street.
- Width of garden.

## Drive & garage location

- Along side of house.
- From the side.

## Orientation or aspect



Historical form or structure  
garden planning

## **The rear garden**

- relationship with the house







## Character streetscape







Inappropriate planting to be removed



Fence appropriate but requires shrubbery or hedge behind



Remnant garden edges - a wide, side frontage garden space



A mango tree and frangipani to retain



## The front garden

- Presentation to the street.
- Welcoming character.
- Decorative elements or plants.





The front fence







An inappropriate fence



## The front fence

- Materials and colour.
- Height in relation to verandah and house.
- The gates.



## case studies



## Abbott Street





The front garden



The side garden



## Beaufort Hill







Rear garden



The small piazza





Highgate Hill







