

The Overall Heritage Award for Excellence was awarded to Project Services and Queensland Health for the **Jubilee Building** (formerly named the A.E. Wilcox Building).



The Overall Design Award for Excellence was awarded to Tower Central Partnership for **Tower Central**.



The Overall Environment Award for Excellence was awarded to **Jocelyn Bailey** for 627 Riverside Drive, Pine Mountain



The Overall Student Award for Excellence was awarded to Primary Arts Network Ipswich and the Ipswich District Teacher Librarian Network for the **Numbellie Seat** at Queens Park.



THE RON BROWN MEMORIAL HERITAGE CONSERVATION AWARDS

Gold Awards



J M Pearce Architects, St Mary's Catholic Church, Thurlow's Stone Masonry, Gerry Cummins and Jill Stehn for **St Mary's Church Re-pointing and Window Conservation**. Photograph courtesy of Lyle Radford.



Project Services and Queensland Health for the **Jubilee Building** (formerly named the A.E. Wilcox Building).

Silver Awards



J M Pearce Architects and Kim Goss for the **Professional Office at 10 Burnett Street, Sadliers Crossing**. Photograph courtesy of Lyle Radford.



J M Pearce Architects and Ipswich Grammar School for the **Ipswich Grammar School Conservation Management Plan**.

THE RON BROWN MEMORIAL HERITAGE CONSERVATION AWARDS

Bronze Award



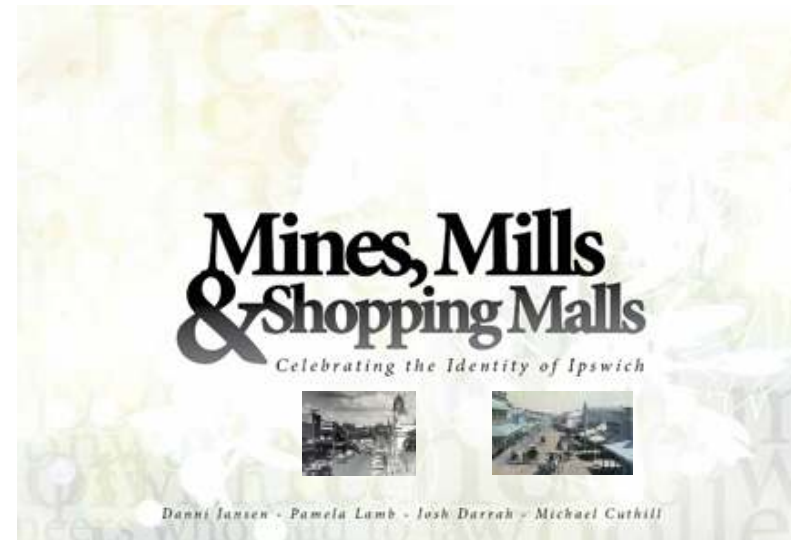
Tower Central Partnerships for
Tower Central.

Chairperson's Award



Donald & Dianne Van Cooten
for **6 Mary Street, Woodend.**

Pamela Lamb, Josh Darrah,
Professor Michael Cuthill and
Danni Jansen for their
publication **Mines, Mills and
Shopping Malls.**



National Trust Ipswich Best Maintained Heritage Property Award



Tim & Jenny Rush for **4 Blackstone Road, Eastern Heights.**



John & Judy Leggat for **88 Brisbane Road, East Ipswich.**



Arnold and Deane Kracht for **23 Harlin Road, Coalfalls.**



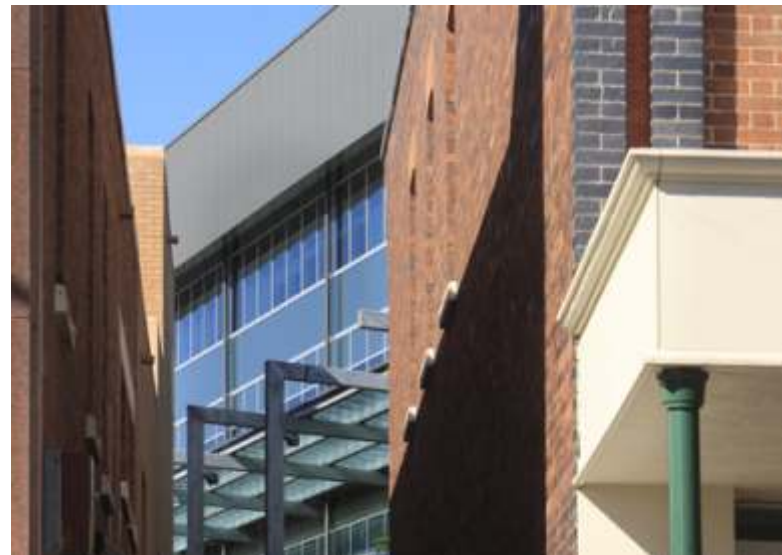
Marcella Beaumont for Beau-Guest, **59 Salisbury Road, Eastern Heights.**

THE AMEX CORPORATION DESIGN AWARDS

Gold Awards



Project Services and Queensland Health for the **Jubilee Building** (formerly named the A.E. Wilcox building).



Tower Central Partnerships for **Tower Central**.

THE AMEX CORPORATION DESIGN AWARDS

Silver Award



Paul Watson of Watbuild for
28 Green Street, Booval.

EnviroPlan Environment Awards

Gold Award - **Jocelyn Bailey** for 627 Riverside Drive,
Pine Mountain



Silver Award - Tom O'Neill for
80 Strongs Road, Lanefield



Bronze Award - Rosewood Golf Club for **Revegetation**
at the Golf Club



Bronze Award - Powerlink for **Revegetation**
Rehabilitation of the Purga Nature Reserve



The University of Southern Queensland, Springfield Campus Student Awards

Gold Awards



Primary Arts Network Ipswich
and the Ipswich District
Librarian Network.
**The Numbellie Seat in
Queens Park.**



Primary Arts Network Ipswich
and the Ipswich District
Librarian Network.
150 Views of Ipswich.

The University of Southern Queensland, Springfield Campus Student Awards

Silver Awards



Goodna Special School.
Westfalen Community Garden.



West Moreton Anglican College.
The Picking Patch.