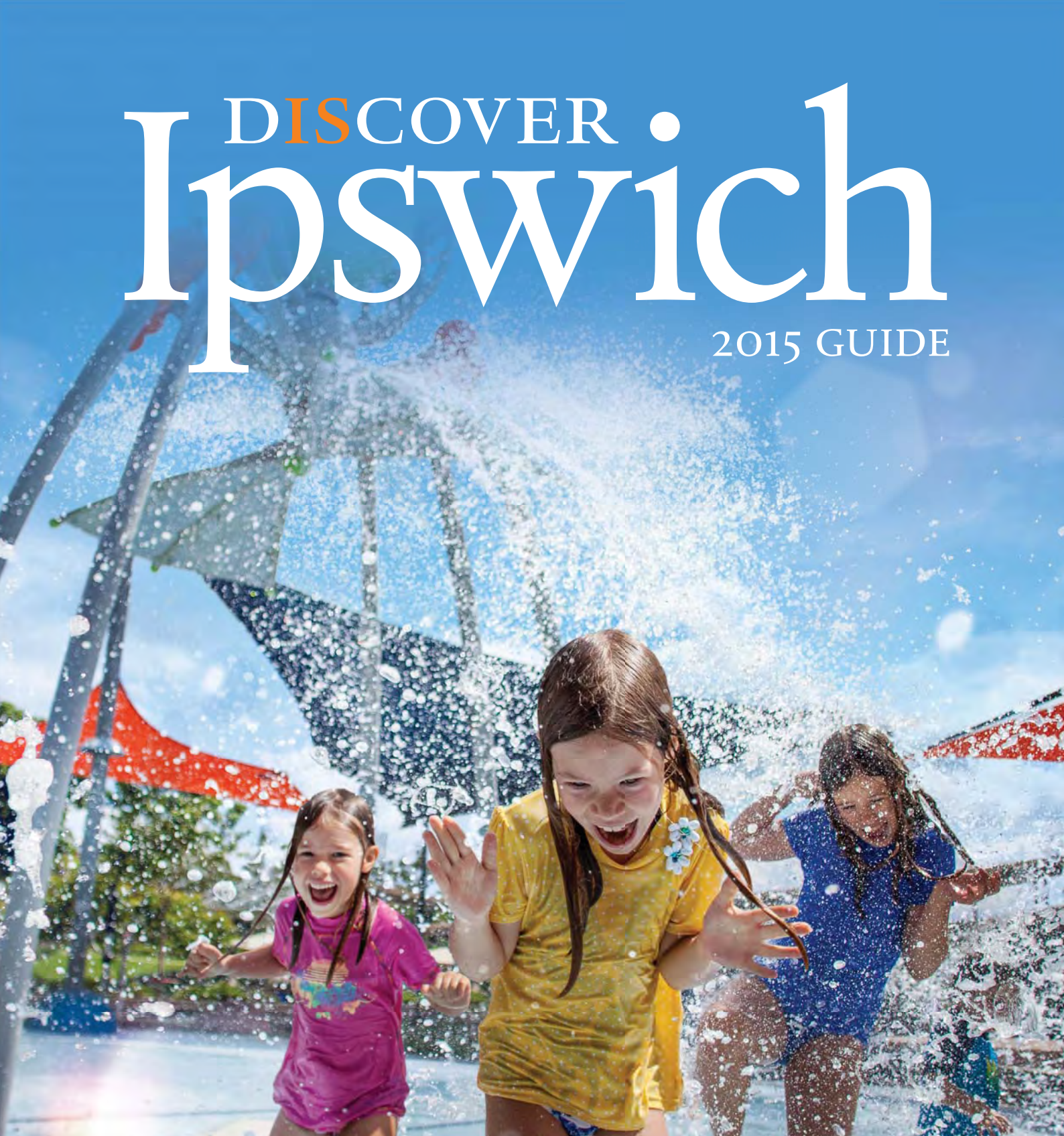


DISCOVER • Ipswich

2015 GUIDE



www.discoveripswich.com.au





IPSWICH VISITOR INFORMATION CENTRE

Our friendly, knowledgeable team is available seven days a week to help you make the most of your visit to Ipswich.

- plenty of parking including caravan and bus parking
- restrooms, showers and café
- free booking service for accommodation and tours
- great selection of souvenirs and local arts and crafts

Queens Park | 14 Queen Victoria Pde, Ipswich

Tel | (07) 3281 0555

Email | info@discoveripswich.com.au

Opening Hours

Monday - Friday | 9.00 am - 5.00 pm

Saturday, Sunday and Public Holidays | 9.00 am - 4.00 pm

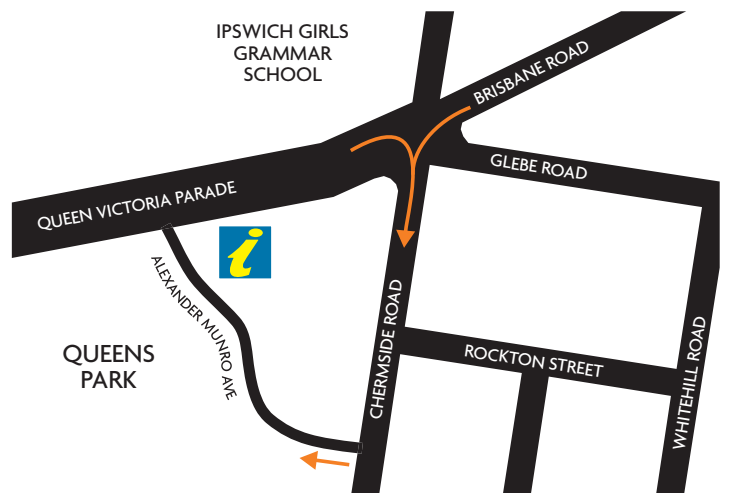
Closed Good Friday and Christmas Day



www.discoveripswich.com.au



LOCATION MAP



CONNECT WITH US



facebook.com/discoveripswich



discoveripswich.com.au/enews



[#discoveripswich](https://instagram.com/discoveripswich)



youtube.com/discoveripswich

IPSWICH HERITAGE BUS TOURS

Discover streets lined with cherished heritage homes, grand churches, historic pubs and stately civic buildings. Hear stories of a bygone era as our guides give you a glimpse into the lives and legends of Ipswich's earliest pioneers.

Tours include an afternoon tea and full commentary from an experienced local guide.

Dates and Times: First Saturday of the month (1.00 pm to 3.45 pm)

Cost: Adult \$40.00 | Concession \$32.00

Bookings Essential

Phone (07) 3281 0555 or visit www.ipswichheritagetours.com.au



DISCOVER Ipswich

2015 GUIDE

Welcome to Ipswich



Mayor Paul Pisasale
City of Ipswich

Welcome to Ipswich where we're big enough to make a difference but small enough to care.

In fact, we believe Ipswich is the best place for you to feel like a kid again and let your kids be kids – and we've got the experiences to make that happen.

Our *big boys'* toys experiences include everything from paintball (*goodies vs baddies*), trike tours (*no training wheels required*), V8 race experience (*the need for speed*) and strapping into a dragster (*like a downhill billy cart race with no brakes!*).



Cr David Pahlke
Chair, Ipswich
Tourism Operators
Network

We've got your super hero dreams covered as well. No need to stretch your arms out and launch off the garage roof... our exhilarating hot air balloon and helicopter flights will take you soaring and landing safely as well.

As for the kids, a visit to Ipswich will have them feeling like they're in 'Neverland'. They can drive a train, collect tickets, and control the signals at The Workshops Rail Museum. Unleash their inner

artist at the fabulous Ipswich Art Gallery; and run, jump, roll, bounce and squeal with delight at anyone of the more than 500 parks on offer – you just know they're going to sleep well tonight! In fact, if you want to stay a bit longer, there's a range of accommodation options just perfect for a sleepover – with or without the kids.

We know when you read this Guide you're going to get a lot of great ideas of how to enjoy your visit to Ipswich. But if you need some insider knowledge, and a little one-on-one time, you can't go past our Ipswich Visitor Information Centre. They'll even stay open seven-days-a-week just to make it easier for you.

If you want to revive your childhood memories and give your kids the chance to create some of their own, then we'll be seeing you in Ipswich soon.



Tread Lightly! Ipswich City Council is committed to environmental sustainability and preserving our green space for the enjoyment of future generations. While visiting our fair City, we encourage you to respect the environment by sticking to designated paths in natural areas, keeping your distance from wildlife and placing your litter in the bins provided.

Once you are finished with this Guide please dispose of it responsibly, or why not pass it on to a friend or family member that may also enjoy visiting Ipswich?



MEMORIES & MEMENTOS 4

Top of Town Precinct [Page 4](#)

Heritage Trails and Tours [Page 6](#)

Snippets [Page 8](#)

art galleries • markets • museums • antique centres • live theatre & shows

FAMILY FUN 10

The Workshops Rail Museum [Page 10](#)

Parks, Playgrounds & Making a Splash [Page 12](#)

Snippets [Page 11](#)

steam trains • creative arts • school holiday programs

ADRENALIN CHARGED 14

Motorsport [Page 14](#)

Hot Air Balloon & Helicopters [Page 16](#)

Snippets [Page 15 & 17](#)

paintball • trike tours • awesome events

ROMANCE & INDULGENCE 18

Romantic Getaways [Page 18](#)

Snippets [Pages 19](#)

spa indulgences • boutique wineries

THE GREAT OUTDOORS 20

Nature Trails – Walk, Cycle, Ride [Page 20](#)

Snippets [Page 21](#)

canoeing & kayaking trails • golf • fun & fitness • dog parks

WINING & DINING 22

Dining Directory [Page 23](#)

EVENTS CALENDAR 26

Markets [Page 27](#)

ACCOMMODATION DIRECTORY 28

MAPS 30

CITY CENTRE [PAGE 30](#)

IPSWICH REGION [PAGE 31](#)

TRAVEL INFO 32



Top of Town

RELIVE THE FUN OF DRESSUPS AND RAIDING YOUR MUM'S WARDROBE.

The Vintage Advantage

It's a real treat when you can visit a place and find a precinct that seems dedicated to conjuring up childhood memories.

Vintage, retro and custom-made fashion, comics and hobby stores are just some of the drawcards in Ipswich's eclectic Top of Town area. Add to this a micro-brewery and bar, funky cafes and restaurants and a luxury spa and you have all the makings for an unforgettable experience – or two. Top of Town is the part of Ipswich where old meets new and anything in between, and you can pick up an unexpected treasure while exploring this character-filled precinct.

The historical Top of Town area takes in a stretch of Brisbane Street, Ellenborough Street and across to the recently refurbished heritage buildings that

“ TOP OF TOWN IS THE PART OF IPSWICH WHERE OLD MEETS NEW AND ANYTHING IN BETWEEN.

house the new Pumpyard Bar and Brewery at 88 Limestone Street.

There's no better way to start off a day of shopping and browsing than to plan your activities while enjoying a snack. Fourthchild licensed café and restaurant in Brisbane Street is established as a place to gather for atmosphere and great food. There's an airy indoor-outdoor feel in the large space that boasts exposed brick walls, a funky pressed metal ceiling vent and bi-fold glass

windows. With Campos coffee tantalising your nostrils and gorgeous cakes in the display cabinet, it's easy to see why Fourthchild attracts the crowds.

Across the street, you can sample the ideal mixture of healthy and only-slightly-wicked at Urban Pantry, with gluten-free or vegan goodies such as raw pistachio chocolate cake and peanut butter brownie cheesecake. The in-house Mudlark Coffee brand is popular, as is the fragrant organic chai sourced from Byron Bay.

Cactus Espresso Bar has a loyal following with its friendly environment and constantly changing specials. It also helps that a pastry chef lends his talents on weekends, serving up hot croissants and danishes to die for. Around the corner behind another charming historical storefront is



Funky giftware and antiques

Ellen's Place, which draws in devoted customers who enjoy its comfy surrounds and delicious goodies. You can also indulge al fresco in the adjacent cosy laneway that displays that it's cyclist-friendly with bike racks supplied.

Two of Top of Town's noteworthy specialty shops are Daily Planet Comics and C.J. Vogler & Son model and hobby store. Daily Planet Comics is a comic lovers' mecca, with a litany of comics, trading cards and other merchandise such as bobble heads. The Amazing Spiderman, Transformers, Captain America – you name it and you can get it here. The family-owned and operated Vogler's has been serving customers since 1877 and looks pretty much unchanged from then with its walls covered in models and spare parts. Australia's longest running hobby store sells remote control items, diecast models, scalextric sets and model trains, and also specialises in rare collectables... who would have thought that 'Matchbox car' would now be so sought after?

Not far away is The Vintage Advantage, which still boasts the original mosaic tiled sign from when it was women's wear store, Lutvey's. Appropriately, you can rummage through old dressmaking patterns in this shop that stocks preloved fashion and an array of memorabilia and bric-a-brac – just like you remember at Grandma's place – with anything from vintage golf clubs to 1960s kitsch objects.

Remember when clomping around in your mother's heels made you feel so grown up? Well ladies, if like millions of your sisters you've still got a passion for a well-shaped heel, you must have a look in Obsession Shoes – although a look will surely not be enough once you spy the gems in this specialty boutique. Get your toes into brands such

as Brazil's Brazilio and cult U.S. brand, Miz Mooz. Customer service is a major focus, with the added bonus of a fitting room so you can bring in outfits to see how your purchases look from top to toe.



Ipswich Massage & Herbal Spa

And who can forget the delight of 'licking the spoon and bowl' at baking time. Well, a visit to Gemütlich (specialising in kitchen and home ware products) will take those memories to a whole new level. Even the name Gemütlich – a German word roughly translated as 'cosy, pleasant and familiar' – carries all the promise of Sunday roasts, homemade ice-cream and icing covered cakes. With Gemütlich more like a design gallery than a shop – check out gems such as Futagami cast brass trivets, glassware and grinders from Danish brand, Menu, and stylish iittala tableware from Finland – owners Jim and Diana offer a range of elegant and functional products to create your own unique style of gemütlich.

Perhaps you'd like to put the shopping on hold and be pampered? Ipswich Massage & Herbal Spa provides a blissful combination of modern science and ancient healing methods. With soothing scents greeting you on arrival, you'll be guaranteed to have any stresses melted away.



Ellen's Place

“ RUMMAGE THROUGH OLD DRESSMAKING PATTERNS, MEMORABILIA, PRELOVED FASHION AND BRIC-A-BRAC – JUST LIKE YOU REMEMBER AT GRANDMA'S PLACE.

The newest Top of Town drawcard, Pumpyard Bar and Brewery, is in the former Queen Victoria Silver Jubilee Memorial Technical College which opened in 1901. The brainchild of James Long and Wade Curtis, who wanted to create a local brewery for the established 4 Hearts Brewing brand, Pumpyard takes its name from being in the area that was the first water source for Ipswich. Here in the funky industrial décor you can have your choice of ten taps of craft beer, the majority produced onsite. There's also an outdoor area with a shaded garden to enjoy a cold one, some delicious, locally sourced food and occasionally live acoustic music.

Strolling back up Brisbane Street, you can't help noticing the charm of the original shop façades and heritage buildings, including the Old Flour Mill building. A few doors away is Stumps Restaurant and Bar on the site that was once the Shamrock Hotel which burned to the ground in 1885. In its place is a 1916-built graceful building that houses the stylish restaurant inside and a casual dining deck out back with views to the grand St Mary's Catholic Church. The tapas menu at Stumps is a popular drawcard.

With all these and more on offer, it's definitely worth putting Top of Town on your list of top places to visit in Ipswich.



Heritage Trails & Tours

REMEMBER WHEN YOU COULDN'T WAIT TO FIND WHAT WAS HIDDEN AROUND THE NEXT CORNER.

St Paul's Anglican Church

You might not be able to still hear the sounds of horses' hooves, carts rolling along unpaved roads, the shrill whistle of steam trains or marvel at the elegance of ladies dressed in the finery bustling to the shops, but for lovers of history and heritage a visit to Ipswich, Queensland's oldest provincial city, is a must-do.

There are plenty of options to go back to 'ye olden days' – walking and driving self-guided heritage trails, bus tours and special places of interest in keeping with a theme such as churches, pubs or cemeteries. To explore the city on foot, the energetic can drop by the Ipswich Visitor Information Centre for brochures then you can start walking using the City Centre Then & Now guide.

You'll learn that Ipswich was established in 1827 as a convict out-station to quarry limestone, with a reminder being the two cairns honouring explorer

“ FOR LOVERS OF HISTORY AND HERITAGE A VISIT TO IPSWICH, QUEENSLAND'S OLDEST PROVINCIAL CITY, IS A MUST-DO.

Allan Cunningham and politician Thomas Glassey perched on Cunninghams Knoll. There's a beautiful, panoramic view and nearby in historic Queens Park is the unique Incinerator Theatre, designed by Walter Burley Griffin, renowned architect of the national capital, Canberra.

The Ipswich City Centre has a wealth of elegant, heritage buildings all within a few blocks so it's a very 'do-able' walk. In Brisbane Street, the handsome Post Office, with its clock tower having given locals the right time since 1901, stands next to

the Old Town Hall, originally a School of Arts back in 1861. Situated inside the restored Town Hall with the entrance via d'Arcy Doyle Place is the Ipswich Art Gallery. The locals are justifiably proud of this award-winning gem that's crammed with thousands of happy children every school holidays thanks to its legendary workshops and exhibitions.

A few steps away in Limestone and Ellenborough Streets, check out the RSL Memorial Hall and Technical College, both designed by celebrated Ipswich architect, George Brockwell Gill. The college was officially opened in 1901 to commemorate Queen Victoria's Diamond Jubilee and has undergone refurbishment for an exciting dining, retail and business precinct.

Then there are the many churches with heritage value and interesting stories to tell. The Ipswich City Uniting Church is the oldest church in



Woodlands of Marburg

Queensland in continuous use, while St Paul's Anglican Church was built in 1859 just before this state separated from its southern counterpart, resulting in the landmark being lauded as 'the nicest church in New South Wales' for a short time. The Gothic-spired St Mary's Catholic Church made from Helidon sandstone, is an imposing Ipswich landmark.

If you'd like to go further afield and inhale some country air, follow the leisurely Cobb & Co. Tourist Drive retracing the historical Cobb & Co. mail route that commenced in 1866 from Ipswich to Toowoomba. You can stop off for a visit at The Workshops Rail Museum in North Ipswich first, then head out following the easily visible 'wagon wheel' tourist drive signposting, through Wulkuraka and then into the idyllic pastoral scenery.

From here, small towns dot the route, each worthy of a stop-off – Rosewood boasts a state heritage-listed Court House and Police Station, while Grandchester has the exquisitely maintained, oldest surviving railway station in Queensland, built in 1865. Further along, the Pioneer Village Museum in Laidley is fascinating for all ages. You can spend hours soaking up the pioneering ambience, looking at historic artefacts galore, and walking through buildings such as a fully furnished slab hut with ant bed oven, 110 year-old school house, and post office. Then there's the picturesque little township of Forest Hill, with quaint cafes and gift shops, and

on to Gatton, Helidon, Spring Bluff, and finally Toowoomba.

There are numerous historic regional precincts around Ipswich, with self-guided Precinct Heritage Trails brochures available at the Ipswich Visitor Information Centre. As well as those on the Cobb & Co. route, the pretty town of Marburg just off the Warrego Highway is a former timber-getting town with several historic buildings including Woodlands, a huge plantation-style mansion built in 1890. Or there's the small township of Walloon, just east of Rosewood, where the Walloon Hotel and former school were both built in 1877. It's also renowned for a tragedy of two young sisters drowning in 1891, immortalised in Henry Lawson's poem, *Babies of Walloon*, and in a memorial statue in the town.

“ SPEND HOURS SOAKING UP THE PIONEERING AMBIENCE AND LOOKING AT HISTORIC ARTEFACTS GALORE.

Then there are the Goodna and Redbank regions, which have historic pubs, cemeteries, churches, coal mining artefacts (the first recorded coal mine in Queensland was in Redbank), and significant sites for the indigenous Jagera, Yuggera and Ugarapul People.



Former Technical College with heritage trail marker



Cobb & Co Heritage Park, Rosewood

Perhaps you'd prefer to sit back and be taken around rather than DIY? The monthly Ipswich Heritage Bus Tours are just the thing. The expert guides will take you to see historic pubs, stately civic buildings, beautifully-maintained heritage houses and grand churches. You'll learn little gems of information, such as a particular christening font from a well-known church went missing and ended up in someone's backyard as a birdbath! Luckily, it was retrieved, restored and is back in its rightful place.

For a very special opportunity to see inside some of the many stately homes of this historic provincial city, it's a great idea to plan a visit to coincide with the twice-yearly event known as *Great Houses of Ipswich*. Operated by the National Trust of Queensland, three privately owned heritage houses are open to the public from 10am-3pm, with the choice changing each time. Houses previously featured include Federation Filigree home, Fairy Knoll, which overlooks the city from Eastern Heights – once a maternal and child welfare home and then a respite home for the intellectually disabled before returning to a private residence – and Bowerlea, a graceful Californian-bungalow style residence, built in 1929 for Florence Fox, daughter of the Mayor at the time.

With all these and many more options for glimpsing into a bygone era, perhaps an overnight stay is a good idea so you can soak it all up.

Memories & Mementos **Snippets**

IPSWICH ART GALLERY



Ipswich Art Gallery

Housed in the first town hall built in Queensland, the Ipswich Art Gallery boasts a collection of over 2,000 works from local and historically significant artists. The Gallery presents a program of changing exhibitions and heritage displays, special events, family activities, complementary performances and art workshops. With all this on offer it's easy to see why it's one of the most-visited regional art galleries in Australia. Check out the upcoming exhibitions at www.ipswichartgallery.qld.gov.au

QUEENS PARK

Queens Park dates back to the original survey for the town of Ipswich in 1842. From the exploration of Allan Cunningham and the discovery of limestone; to royal visits and Coronation Day celebrations; home to Queensland's oldest croquet club; and the Walter Burley Griffin designed incinerator, the park is steeped in history. Unearth these memories for yourself on a self-guided audio tour using your own smart phone or audio device (www.ipswichheritagetrails.com.au) or hire a pre-loaded MP3 player from the Ipswich Visitor Information Centre or Queens Park Café.

COONEANA HERITAGE CENTRE

If you're into local history and traditional craftsmanship then put a visit to historic Cooneana Homestead on your itinerary. Home to the Ipswich Historical Society and Spinners & Weavers, Cooneana Heritage Centre houses historical photographs and artefacts and mining displays that reflect the rich and diverse history of Ipswich. For more information about opening hours and special events visit www.ipswichhistoricalsociety.com

LOCAL MARKETS

If you're looking to create a memory or take home a memento, then a trip to one of the local markets is another must-do. You can discover a treasure trove of market stalls and unearth gourmet delights, fresh seasonal produce and a taste-tempting range of homemade products. Handmade treasures on the list? You'll find timber items, children's clothing & accessories and eye-catching jewellery. If pre-loved items appeal we've got that covered too. For market dates, times and locations refer to the Events Calendar on page 27 or visit www.discoveripswich.com.au

IPSWICH ANTIQUE CENTRE



Ipswich Antique Centre

Being Queensland's oldest provincial city and having a fantastic antique centre just seems a natural fit. Housed in the beautifully restored Congregational Church Hall built in 1895, the Ipswich Antique Centre brings together over 30 antique dealers and the best vintage wonders from the region and beyond. You'll find furniture, pottery, jewellery, vintage clothes and movie memorabilia. They even have a specialised Retro Room. Yes, it's true... everything old is new again. Browsing? – visit www.ipswichantiquecentre.com.au

RIVER HEART PARKLANDS

The Bremer River runs through the heart of Ipswich Central. Along its southern banks you will find the aptly named River Heart Parklands – this meandering parkland hugs the river bank from Ellenborough Street in the west to Blackall Street in the east. Not only a fantastic spot for fun and play (see Family Fun on page 13), the pylons along the boardwalk at the western end, tell the story of Ipswich's once bustling inland

port. Imagine the river teeming with paddle steamers, barges, sailboats and market boats all transporting lime, coal and merchant goods to and from Brisbane.

AVIATION HERITAGE CENTRE



RAAF Amberley Aviation Heritage Centre

Ipswich's RAAF Base Amberley has been an important part of the Ipswich community since 1940. The RAAF Amberley Aviation Heritage Centre showcases collections of Australian military memorabilia and historic aircraft which once graced the skies around the Base. The Centre is open to the public on the third Sunday of each month (except December) from 9am to 3pm. Group tours by appointment every Tuesday and Thursday. For a sneak peak at what's on offer visit www.raafamberleyheritage.gov.au

LIVE SHOWS

Ipswich loves to put on a great show. Whether you enjoy amateur theatre productions – think the celebrated Ipswich Little Theatre Society productions staged in the intimate Incinerator Theatre – or delight in musical theatre presented by our own Ipswich Musical Theatre Company, there's something to suit your theatrical taste. Shows by touring national & international artists and ensembles make up the full program of plays, concerts, dance, comedy and children's shows presented at the Ipswich Civic Centre. The latest addition to Ipswich's cultural offering is Studio 188. Formerly a Baptist Church in the Top of Town precinct, this space has been resurrected as a dynamic cultural and creativity space for various forms of performing arts. For more on these entertaining options visit www.ipswichlittletheatre.com.au www.ipswichmusicaltheatrecompany.com.au www.ipswichciviccentre.com.au www.studio188.com.au

Ipswich Art Gallery

The award-winning Ipswich Art Gallery offers a diverse range of exhibitions along with the works of local artists, quality visual art and craft displays, collections of heritage artefacts and an exciting program of art workshops. Open 7 days (10am to 5pm).

d'Arcy Doyle Place (Nicholas St), Ipswich QLD 4305
 T: (07) 3810 7222
 E: info@ipswichartgallery.qld.gov.au
 W: www.ipswichartgallery.qld.gov.au



Incinerator Theatre

- Unique heritage listed building designed by Walter Burley Griffin.
- Home to Ipswich Little Theatre Society.
- Entertaining with top class performances for more than 60 years.
- Theatrical experiences for adults and children.
- Guided group tours by appointment.

Burley Griffin Dr, Ipswich QLD 4305
 T: (07) 3281 4437 or (07) 3812 3450
 E: info@ipswichlittletheatre.com.au
 W: www.ipswichlittletheatre.com.au



Ipswich Antique Centre

Located in a magnificent 1895 heritage listed building. Multi-dealer Centre with an enormous range of antiques and collectables all for sale. Air-con, large free car park, on-site café serving homemade slices, light lunches, etc. Open 10am-5pm, Thursday to Monday. *'City Antiques at Country Prices'*.

86 East St, Ipswich QLD 4305
 T: (07) 3281 2330
 E: info@ipswichantiquecentre.com.au
 W: www.ipswichantiquecentre.com.au



The Workshops Rail Museum

Step back in time at the birthplace of rail in Qld. Wander through beautifully restored carriages & rekindle memories of grand rail travel. See genuine restoration of the Heritage Fleet up close & hear living history from railway workers – plus a few tall stories! See back cover for more info.

North St, North Ipswich QLD 4305
 T: (07) 3432 5100
 E: info@theworkshops.qm.qld.gov.au
 W: www.theworkshops.qm.qld.gov.au



YOU ONLY LIVE ONCE!

GET BEHIND THE WHEEL OF A V8 RACE CAR ON A REAL V8 RACE TRACK TODAY!



Queensland RACEWAYS
 MORE THAN RACING

V8 RACE EXPERIENCES

FROM **\$199** FOR 6 LAPS

CALL **1800 RACERS** TO FIND OUT MORE!

Champions Way, Willowbank Q 4306 Telephone: 1800 722377 Email: v8xsales@qldraceways.com.au www.qldraceways.com.au



The Workshops Rail Museum

BIG TOYS FOR
BIG LOUD FUN

Nippers Railway

Hands-on fun for everyone? Tick. Award-winning? Tick. An absolute must-do in Ipswich? Tick. The Workshops Rail Museum at North Ipswich offers the ideal mix of fascinating history and modern interactivity.

You won't be able to drag the kids away from the interactive exhibits, with a popular one being the Diesel Revolution where dreams of being a train driver come to life as you take the controls of the diesel locomotive simulator. Then there's the ever-popular Nippers' Railway where the full gambit of rail experiences is on offer – drive a train, collect tickets, control signals and so much more.

School holidays are special at The Workshops Rail Museum, with the Day Out with Thomas programs a big hit (from Boxing Day to the end of January). Kids can see Thomas the Tank Engine and a real-life Fat Controller and take part in plenty of hands-on activities. Check the website events calendar for other school holiday programs.

Young and the not-so-young alike can enjoy soaking up the romance of a bygone era walking through an historic refreshment carriage, or peer into the Vice-Regal Carriage to see the opulence in which the Governor travelled. Then be thrust back into the present courtesy of a simulated ride on the high-speed tilt train, and marvel at the intricate detail and workings of Queensland's largest model railway.

“ YOU'RE DWARFED BY BEAUTIFULLY RESTORED LOCOMOTIVES AND CARRIAGES WHICH EVOKE CHILDHOOD MEMORIES FOR ADULTS AND CREATE A WORLD OF DISCOVERY FOR THE LITTLIES.

Located in the old Railway Workshops, the entire site is steeped in history. Entry is through the Timekeepers' Building and the museum itself is inside the old boilershop. Strolling around, you're dwarfed by beautifully restored locomotives and

carriages which evoke childhood memories for adults and create a world of discovery for the littlies.

And if you ever wondered what the 3,000+ workers did every day, a behind-the-scenes tour of the blacksmith shop (enclosed footwear is required) will go a long way to explaining why a visit to The Workshops Rail Museum is BIG LOUD FUN.



The diesel locomotive simulator

Family Fun Snippets

FULL STEAM AHEAD



Queensland Pioneer Steam Railway

Keeping the legend of rail alive for littlies doesn't stop at The Workshops... at Rosewood, Grandchester and Swanbank you'll find other enthralling train experiences. On the last Sunday of every month the Rosewood Railway Museum (www.arhs-qld.org.au) fires up its steam trains for rides between two historic stations, Cabanda and Kunkala. On the first Sunday of the month, Grandchester Model Steam Railway (www.gmlsa.com.au) brings things down to size with rides on magnificent miniature replicas. Not to mention regular trips aboard Queensland Pioneer Steam Railway's vintage steam trains from the Ipswich Turf Club in Bundamba (www.qprs.net).

IPSWICH ART GALLERY

Ever wondered why the Ipswich Art Gallery is one of the most visited regional Galleries in Australia? How about these for starters... the Gallery was the first in Australia to offer a dedicated Children's Gallery with innovative programs including interactive exhibitions, dance and movement sessions, puppet shows and create-your-own-art workshops. Encourage your child's creativity with a visit to the Ipswich Art Gallery. Discover more at www.ipswichartgallery.qld.gov.au



Ipswich Art Gallery

FAMILY EVENTS



School holiday activities for fun & creativity

Ipswich is great for family fun year-round. But that doesn't stop us having special family-friendly events to add to the enjoyment. You'll find a list of events on pages 26 & 27 or, because we're regularly adding new events, you can check out What's On at www.discoveripswich.com.au. School holidays? I'm bored! Not anymore. Join in the full range of school holiday activities and events on offer at the Ipswich Art Gallery, The Workshops Rail Museum, the Ipswich Library and other venues around Ipswich.

Atlantic Limousine Transfers and Tours

We are your best choice for transport for all occasions in Ipswich. We specialise in:

- Airport & Hotel Transfers
- Weddings & Formals
- Limousine Hire
- Group Tours & Concerts
- Hens parties & Bucks nights



T: 1300 556 446
E: bookings@atlanticlimousine.com.au
W: www.atlanticlimousine.com.au

The Workshops Rail Museum

All aboard for hands-on fun at Australia's oldest railway workshops still in operation. Let off some steam in the indoor adventure playground and expansive grounds or try your hand at driving a train on a simulator. It's BIG LOUD FUN in every way! See back cover for more info.

North St, North Ipswich QLD 4305
T: (07) 3432 5100
E: info@theworkshops.qm.qld.gov.au
W: www.theworkshops.qm.qld.gov.au



Stop and Smell the Roses

Don't just rush by... we invite you to Stop and Smell the Roses. Located in the Phippsy's Marburg complex, just off the Warrego Highway, pick up fresh cut flowers, browse our range of plants or find that "something special" from our range of handmade gifts. Breathe deep... it's a worthwhile stop.



207 Edmond St, Marburg QLD 4346
T: (07) 5464 4134
E: info@phippsysmarburg.com.au
W: www.phippsysmarburg.com.au

Ipswich Art Gallery

Inspire your kids with a visit to our award-winning Children's Gallery. Creative play, hands-on activities and interactive exhibitions will stimulate your child's imagination and inner artist. Open 7 days (10am to 5pm).

d'Arcy Doyle Place (Nicholas St), Ipswich QLD 4305
T: (07) 3810 7222
E: info@ipswichartgallery.qld.gov.au
W: www.ipswichartgallery.qld.gov.au





Parks, Playgrounds & Making a Splash

RUN, JUMP, ROLL,
BOUNCE, SLIDE AND
SQUEAL WITH DELIGHT.

Robelle Domain, Springfield Central

Let's face it – kids need to run, climb, swing, roll, jump, bounce and all those other fun things that kids do because they can. Whether you're visitors to Ipswich or locals looking for great outdoor areas where you can let your kids be kids, we can think of more than 500 parks that fit the bill.

Parks have come a long way since the days of jungle gyms, slippery dips and swings, and you can't go past **Robelle Domain** at Springfield Central to realise just how much they've changed. Here, expansive green lawns, bike tracks, tree top walks and shady picnic areas are great for all the family. Add to this the Family Water Play area where excited, screaming children are getting dunked by a huge tipping bucket and sprayed with water jets – you know they're going to sleep well tonight – and parents can keep a watchful eye from the nearby café while having a cuppa and sweet treat. In the evening, the park takes on a different mood with its 9-metre high light tower installations giving a spectacular sound and light

show. By mid-2015 a public, lagoon-style pool will be another big reason – one of the biggest in Australia, actually – to come over and play at Robelle Domain.

For a park with a completely different feel and trademark Ipswich heritage, **Queens Park** in Ipswich Central is the jewel in the crown. One of the oldest parks in Queensland, it boasts enormous, shady trees dotted around the picturesque green expanse on the hill at the eastern entrance to the city. A perfect place to spread out the picnic rug, fire up the barbie and spend a pleasant few hours. If you're not such a BYO person, the indoor-outdoor Queens Park Café offers everything for the hungry park-goer, including a special Kids' Menu. Next door is the Environmental Education Centre with some fun interactive displays.

Queens Park's playground was inspired by Ipswich's coal mining history, with an impressive design incorporating a flying fox, fixed model

train, Liberty Swing for people in wheelchairs to enjoy a ride, and water pumps. And if that's not enough, there are two more amazing, free attractions – the Japanese-themed Nerima Gardens, and the Ipswich Nature Centre which has been delighting visitors since 1936.

“ WHERE EXCITED, SCREAMING CHILDREN ARE GETTING DUNKED BY A HUGE TIPPING BUCKET AND SPRAYED WITH WATER JETS.

Enter the Ipswich Nature Centre through the historical rotunda and be charmed by wallabies contentedly nibbling or dozing, and other native animals such as wombats, emus, bilbies and water birds in their authentic habitats. Then there's the barn where the younger ones won't be able to resist farm animals such as pigs, calves, guinea pigs and lambs.



Queens Park



Colleges Crossing Recreation Reserve

Nerima Gardens was designed in consultation with Ipswich's sister city in Japan. A model traditional Japanese tea house, constant sound of flowing water, winding paths and charming gardens make this a tranquil and calming space. A unique factor is that Australian native plants have been used, with some being indigenous to Ipswich.

Looking for a bushland adventure in the city? Just follow the streets up to the white water tower overlooking the city to the **Denmark Hill Conservation Park**. Take your pick of easy bushwalking circuits and venture into Triassic Park, complete with a Stegosaurus structure protecting the dinosaur footprints and fossil displays.

Down on the banks of the Bremer River is the **River Heart Parklands**, taking up 1.2km from between the Bradfield Bridge (a pedestrian bridge across to the popular Riverlink Shopping Centre) and Bob Gamble Park. Wheelchair and pram-friendly boardwalks, a spider web-style climbing frame (think modern 'jungle gym'), children's aquativity park for refreshing fun, and a huge 'Discovery Forest' will keep the kids happy for hours. While there, it's worth reading the information plaques about the fascinating history of the city that was once slated to be Queensland's capital but missed out because the river wasn't deep or wide enough for shipping.

Keeping with the splashing around theme, just a few minutes from Ipswich Central is the **Colleges Crossing Recreation Reserve** on the Brisbane River. A long-time favourite with locals and visitors alike, you can enjoy good old-fashioned paddle in the shallows, fishing and kayaking in the 'lake' (a large natural inlet) and a shaded, nature-based playground with equipment such as a fort, musical wall, spinning seats, tree log tunnel and frog sculptures. The large, grassed area allows for sports and there are also walking tracks and bike/scooter paths. No doubt you'll be exhausted and hungry after all of that, so it's good to know there are barbecues at the sheltered picnic table areas and refreshments – including an all-day breakfast – at the café that boasts gorgeous views of the river.

“ A SPIDER WEB-STYLE CLIMBING FRAME, AQUATIVITY PARK AND A HUGE 'DISCOVERY FOREST' WILL KEEP THE KIDS HAPPY FOR HOURS.

One of the other park highlights of Ipswich, with a nod to the nearby RAAF Base at Amberley, is **Lobley Park** in the suburb of Churchill. As soon as you arrive, you'll see why the park has won awards for its aeronautical-themed playground. Kids will love playing in the air-traffic control tower with all its buttons and dials, plus there's an

airport security metal detector and walk-in RAAF cargo plane model with mock cockpit. Because the park is lit up at night, it's a great idea to BYO snags for a dinnertime barbecue.

From the modest local neighbourhood park through to something as impressive as Robelle Domain – one of Australia's largest outdoor recreation facilities of its kind – you'll have no trouble finding the perfect park or playground in and around Ipswich.



Ipswich Nature Centre



Motorsport

EVER WANTED TO GROW UP TO BE A RACING CAR DRIVER?

V8 Race Experience at Queensland Raceway

Savvy petrol-heads are already in the know about the Ipswich Motorsport Precinct, but if you're unaware of its race events and hands-on adrenalin-charged experiences, get your motor running and get out on the highway to Queensland Raceway or Willowbank Raceway.

If tearing around a track in a race-prepared V8 is your idea of the ultimate buzz, then take the wheel with Queensland Raceway's V8 Race Car Experience. You'll be fully kitted out just like you see on TV, and, just like the pros, you'll have a full briefing before you ease into your mean machine. Yes, there'll be a roar of the engine in your ears, but also the voice of your in-car coach giving you some racing tips via your helmet intercom. You'll never be stuck again for a present for "someone who has everything"... and we're not just talking about the boys either.

If drag racing is more likely to get your chequered flag waving, head to Willowbank Raceway where the Fastrack Drag Racing Experience offers an unforgettable encounter. With a licenced drag racing professional at the wheel of the purpose-

built 3-seater Rail Dragster, you'll experience an amazing adrenalin rush with the burnout and launch, going from zero to 100km in two seconds.

Not all motorsport enthusiasts need to get behind the wheel to experience the excitement of the sport. Just as well then that huge events at the Ipswich Motorsport Precinct keep thousands of fans happy every year.

“ EXPERIENCE AN AMAZING ADRENALIN RUSH WITH THE BURNOUT AND LAUNCH, GOING FROM ZERO TO 100KM IN TWO SECONDS.

The Coates Hire Ipswich Super Sprint (31 July - 2 August 2015) sees the Australian V8 Supercar Championships hit Queensland Raceway, while Powercruise (10-13 September) sees motoring buffs showing off their pride and joy and cruise them around the track.

The largest drag racing event outside the USA is the FUCHS Winternationals (4-7 June) at Willowbank Raceway. This is a great family-friendly event and with categories including Top Doorslammer and Supercharged Outlaws, it's the place to be for high adrenalin action.

Whether you're a spectator or partaker, for more information on how to get your adrenalin charge visit www.qldraceways.com.au and www.willowbankraceway.com.au



Fastrack Drag Racing Experience at Willowbank Raceway

Adrenalin Charged Snippets

CHALLENGING PAINTBALL FIELDS



National Paintball Fields

If you seek to stimulate your mind and body through the challenge of extreme sport, or just want to relive your “goodies and baddies” childhood games, then paintball will be right up your alley... and now you have two locations to scope out.

A variety of exciting fields provide a great mix of action and excitement that test your skill and ingenuity to reach your objectives and complete

your missions. Kitted out in camouflage, full face and head protection, you'll feel like you're part of the A-Team. Stealthy manoeuvres, team tactics and a whole lot of fun are all part of the experience.

Tried it and loved it? Become a member and take advantage of special deals. More information and stimulation at www.npf.com.au and www.tacticalopspaintball.com.au

THRILLS ON THREE WHEELS

Remember the excitement of getting your first tricycle? When a ride around the block was the just the best adventure? Well, now that you're all grown up, here's something to recapture the thrill.

Take a ride with Steve from Ipswich Trike Tours and feel the rush of the wind in your face – and you don't even have to pedal. And what's even better, you can tell Steve where you want to go and ride around for as long as you like – even if it's just around the block a couple of times. With space for up to three passengers, it's all for one and one for all!

Still want a little something extra to rev up the adrenalin? Steve has teamed up with Captain Mike from Pterodactyl Helicopters to add that extra buzz, like a low level flight along the twists and turns of the Brisbane River during a 'River Run' – how's that for an adrenalin rush? For your own dose of adrenalin contact Steve on ipswich.trike.tours@gmail.com or check out a variety of tour packages at www.pterodactyl.com.au



Ipswich Trike Tours

Floating Images Hot Air Balloon Flights

Brisbane's closest Hot Air Balloon company, simply drive 30 mins west of the Brisbane CBD. Experience the adventure of ballooning. 1 Hour Flight over Ipswich and Scenic Rim region, Restaurant Champagne Breakfast and Flight certificate.

Call or book online for Flights, Gift Voucher and Accommodation Packages.

259 Junction Rd, Karalee QLD 4306
T: (07) 3294 8770
E: info@floatingimages.com.au
W: www.floatingimages.com.au



National Paintball Fields Blacksoil

Book Now and mention this fantastic Paintball offer to get 50% off our standard 3.5 hour session or 50% off our Signature 12hr Scenario Night Games. Ideal for any event or just a bit of fun! Bucks, Birthdays, Corporate, Social Days. Memberships - at NPF we've got you covered! (Age: strictly 15+).

Cnr Brisbane Valley Hwy & Coach Ln, Ironbark QLD 4306
T: (07) 3891 5366
E: info@npf.com.au
W: www.npf.com.au



Ipswich Trike Tours

Available for: * Joy Rides * Half/Hour Joyrides * Half/Full Day Tours * Scenic tours through Gold Coast Hinterland * Winery Tours through Scenic Rim * "Tick off the bucket List" Tours * Design your own tour for your special occasions or combine exciting experiences such as Pterodactyl Helicopters

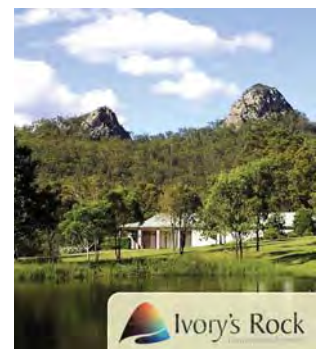
T: 0410 314 993
E: ipswich.trike.tours@gmail.com
Facebook at 'Ipswich Trike Tours'



Ivory's Rock Conventions and Events

Escape to the Country! Stimulate new thinking and creativity in our private natural setting, with modern conference facilities for day business meetings and workshops, residential retreats and outdoor conventions for up to 5000 - only 20 minutes from the Ipswich CBD. Call Colette, our Functions Manager on 0487 004 602 to come see for yourself.

Mt Flinders Rd, Peak Crossing QLD 4306
T: (07) 3077 9668
E: enquiries@ivorysrock.org.au
W: www.ivorysrock.org.au





Hot Air Balloon & Helicopter Flights

MAKE YOUR DREAMS OF FLYING COME TRUE.

Floating Images Hot Air Balloon Flights

Some people prefer to enjoy life's adventures with their feet firmly planted on the ground. For others, it's the experiences that see them soaring above it all that create those once-in-a-lifetime memories. If you see yourself – or want to see yourself – in the latter category, here are a few options to think about.

Occasionally, you probably like to go out with that someone special to dine and have a glass of wine. Other times, a beer with your mates at your "local" really hits the spot. Now you can turn these simple pleasures into a truly breathtaking experience with the help of Captain Mike from Pterodactyl Helicopters. Captain Mike and his team have created a couple of packages where travelling between venues – local boutique wineries for the Wine Tour and authentic Aussie pubs for the Pub Crawl – are done by helicopter. Just awesome!

There are other combinations to choose from or maybe a low level flight along the winding Brisbane River is your idea of an incredible adrenalin buzz. For more information check in

with www.pterodactylhelicopters.com.au

Perhaps you fancy yourself as a bit of a Phileas Fogg? He might've needed 80 adventure-packed days to balloon around the world, but you'll only need a couple of hours to create a thrilling, lifelong memory.

“ COMBINE A MAGNIFICENT SUNRISE, THE ROMANCE AND ADVENTURE OF OLD-WORLD TRANSPORT AND SPECTACULAR SCENERY INTO ONE EXHILARATING EXPERIENCE.

With over 20 years ballooning experience, including 13 years as owner and chief pilot of Floating Images Hot Air Balloon Flights, Graeme Day knows what it takes to create a legion of enthusiastic fans who like their adrenalin rush a little on the softer side.

Yes it's an early morning start, but why wouldn't you want to combine a magnificent sunrise, the romance and adventure of old-world transport

and spectacular scenery into one exhilarating experience. Tempted? Of course you are.

You can even extend the experience with an overnight stay at the Metro Hotel Ipswich International. Conveniently, it's the meeting point for Floating Images' adventurers and it's where you return for your champagne breakfast. Need more information? www.floatingimages.com.au

Whichever option you choose, you can be guaranteed of unforgettable memories whether you're flying solo, as a couple or with a group of family and friends.



Pterodactyl Helicopters' Wine Tour

Adrenalin Charged Snippets

EVENTFUL IPSWICH



Spartan Race at Ivory's Rock

Some people get their adrenalin hit by being a spectator at an awesome event, while others prefer to get their hands (face, feet and every other body part) dirty and being part of the spectacle. No sweat... in Ipswich we've got you covered either way with a year round program of spectate-or-participate events.

If being part of an enthusiastic and vocal crowd does it for you, then you can't go past two events at the Ipswich Motorsport Precinct that get the adrenalin pumping and excite the senses. Hear the thunder of engines and the squeal of tyres; smell the burning of rubber; see the flash of exhaust flames and feel those good vibrations coursing through your body. For the drag racing enthusiasts, the FUCHS Winternationals is the big ticket event at Willowbank Raceway while Queensland Raceway sets the battle ground for the long-standing rivalries of the Australian V8 Supercar Championship.

On two wheels or two legs, there are a variety of events that can be fun or challenging (and sometimes both). If pushing your body to the limit or setting a new PB appeals, you can take your pick from Adventure Race Australia (gruelling), Park2Park (challenging), Spartan Race (beastly) and a host of mountain biking and cycling events.

Looking for the fun element in your event? How about the Color Run for starters... it's sure to bring back a heap of childhood memories.

For more details about some of these spectate-or-participate opportunities, check out the Events Calendar on Pages 26 & 27. But don't stop there... we're adding more events to the calendar every year, so check out the What's On section at www.discoveripswich.com.au to make sure you don't miss your special brand of excitement.

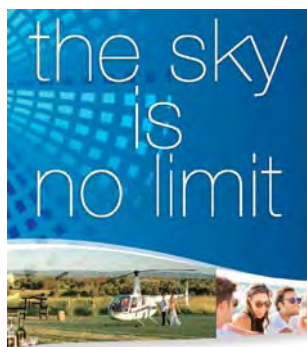


FUCHS Winternationals at Willowbank Raceway

Pterodactyl Helicopters

Experience a whole new level of wonder. Take a chopper ride over golden countryside, landing to sample only the best attractions. Stay overnight in luxury. Visit boutique wine cellar doors. Savour gourmet country cooking. Getting there is half the fun.

479 Lake Manchester Rd, Kholo QLD 4306
T: (07) 3201 0005 or 0417 727 532
E: mike@pterodactyl.com.au
W: www.ipswichheli.info



Gemütlich

A design gallery for the modern palette. Located amongst the cafés in the Top of Town, Gemütlich offers everything from the refined elegance of exquisite ceramics to ever-chic homewares and occasional furnishings; and an extensive range of kitchen utensils with a designer aesthetic.

126 Brisbane St, Ipswich QLD 4305
T: (07) 3812 2836
E: info@gemutlich.com.au
W: www.gemutlich.com.au



Pumpyard

BAR & BREWERY

88 LIMESTONE ST.

SPECIALISING IN LOCAL CRAFT BEERS BREWED ONSITE, GUEST CRAFT BEERS, CIDER, WINE AND PREMIUM SPIRITS. LOCALLY SOURCED BAR FOOD AVAILABLE FOR LUNCH AND DINNER

FOR OPENING TIMES & GROUP BOOKINGS
CALL 3282 9076 // EMAIL ADMIN@4HEARTSBREWING.COM



WWW.4HEARTSBREWING.COM



Romantic Getaways

REKINDLE THE GIDDY FEELING OF THAT FIRST CHEEKY KISS.

Spicers Hidden Vale, Grandchester

Countless poems have been written about it – romance. And if the question has ever entered your mind, “How do I love thee?” you might find a great answer is, “Enough to indulge in a romantic getaway in Ipswich”.

For a sumptuous rural retreat experience only 30 minutes’ from Ipswich check in to Spicers Hiddenvale at Grandchester. This group of historic cottages perched on top a ridge with breathtaking views, and offering mouth-watering food from an award-winning chef, is a no-brainer when it comes to the perfect romantic destination. You can soak up the history of the 12,000-acre property and enjoy modern facilities combined with period-style charm. A highlight is dining in Homage Restaurant, where the chef creates his ‘paddock to plate’ dishes using locally sourced produce and seasonal bounty from the onsite kitchen garden.

Here, you can do as little or as much as you like together. Indulge in an onsite spa package, watch the local kangaroos munching on grass, play tennis, swim, ride horses... and more. You could

even combine your stay with a winery tour with a difference, courtesy of Pterodactyl Helicopters, or a Floating Images hot air balloon flight. What a way to sweep someone off their feet!



Marys Place B&B

If you’d prefer to keep your starry-eyed stay with that special someone in the Ipswich CBD to take advantage of the restaurants and live shows, Mary’s Place Bed & Breakfast in a 1928 bungalow offers heritage elegance. Owner Mary Ward loves to spoil her guests with treats such as tea in bed or chocolates at night, and exquisite linen, boutique period furniture and authentic colour schemes make this a luxuriant experience.

The word ‘boutique’ usually conjures up something cosy and exclusive and that’s just what you’ll get at the Springfield Lakes Hotel. You’re bound to be impressed by the modern, yet classical, décor which creates the feeling of casual luxury and easy comfort. Add to this Queensland’s number one public access golf course, Brookwater; unique spa experiences for couples or singles at Sang Day Spa; and a shopping mecca at Orion and you have all the ingredients for a perfect romantic getaway. And you don’t have to wander far – just to the hotel lobby, in fact – to top off the day with a romantic dinner at BLVD Restaurant.

“ HISTORIC COTTAGES PERCHED ON TOP A RIDGE WITH BREATHTAKING VIEWS, AND OFFERING MOUTH-WATERING FOOD.

Whether you’re rekindling a romance or starting out on a new journey together, Ipswich is the place to discover that special something to cherish for a lifetime.

Romance & Indulgence **Snippets**

SPA INDULGENCES

Looking to soothe the senses and refresh the spirit? Add these indulgences to your getaway itinerary.

Every city has its hidden secrets – few come as such a welcome surprise as Sang Day Spa in Springfield. From the moment you walk through the elegant double doors you know you're in for an exceptional experience. Exclusive treatments have been researched and developed over 25 years by Sang Ha. Sang has also developed her own range of natural products. Tempted? Visit www.sangdayspa.com

Our newest offering for spa indulgences comes from Ipswich Massage and Herbal Spa. Established in a renovated warehouse in Ipswich's historic Top of Town precinct, the Spa offers five luxurious therapy rooms and a Vichy shower room – pure heaven. Delivering a holistic approach to wellness, modern science combines with ancient healing through spa therapies, products and energy-giving cuisine: www.ipswichmassage.com.au

BOUTIQUE WINERIES

Enthusiasm and passion are infectious. One of the rewards of boutique wineries is the chance to meet the passionate people behind the wines. Hand-planted and hand-picked is the way they do it at Ironbark Ridge Vineyard and, being the oldest vineyard in the district, they've been passionate about their wines for some time. Award-winning wines will tantalise your tastebuds and tempt you to take some home with you. For more information visit www.ironbarkridge.com.au

If you have a couple of gaps in your wine rack that need filling, there are four other boutique wineries with cellar doors in the region. Along with Ironbark Ridge Vineyard, they make up the Scenic Rim Wine Trail (www.scenicrimwines.com.au) and travelling from one to another is a sensational experience in itself.

Intrigued by a couple of the wineries but can't decide on the "dedicated driver"? Captain Mike has this covered with his helicopter winery tours. Why should it be just your taste buds that have all the fun? Interested? www.pterodactylhelicopters.com.au



Sang Day Spa



Ironbark Ridge Vineyard, Purga

Shop • Dine • Relax • Be entertained

RIVERLINK

SHOPPING • DINING • LEISURE • ENTERTAINMENT

Shop Over 160 brand name stores and services.

Dine Extensive dining options throughout, both in the foodcourt and restaurant precinct.

Relax Located in the heart of Ipswich overlooking the Bremer River featuring heritage walk trails. Stop for a wine, coffee or meal.

Be entertained 8 movie theatres including 'The Lounge' licenced area within Limelight Cinemas.

www.riverlink.net.au • Like us on Facebook • Corner Downs Street and The Terrace, North Ipswich • p 3294 5500

Riverlink Shopping Centre



Nature Trails – Walk, Cycle, Ride

WE'RE GOING
EXPLORING. WE'LL BE
BACK BEFORE DARK,
MUM... WE PROMISE.

Denmark Hill Conservation Estate

If you're the type that loves the outdoors and the endless opportunity nature presents to invigorate body and mind, then Ipswich is the place for you.

Ipswich has much to offer nature lovers, its areas abundant with nature trails for those who just like a short, easy stroll or the more energetic with serious hiking on their minds... and feet. Happy campers can also enjoy that precious feeling of waking up with nature at a campsite.

On Ipswich's northern outskirts is **Kholo Gardens**, a sub-tropical haven that boasts a 400m walk under a natural rainforest canopy or steeper, longer walks to push the pulse rate higher. An elegant church and crystal clear lily pond complete the serene picture.

On the other side of town just 15 minutes from Ipswich Central is **Purga Nature Reserve**, which has the largest remnant of Swamp Tea Tree protected in Australia. The easy, self-guided walks amid the ghostly, ashen trees are pleasant and

there's disabled access, giving everyone the opportunity to try to spot koalas and Eastern Grey kangaroos.

“ SPECTACULAR VIEWS OF ANCIENT MOUNTAIN FORMATIONS, THE BRISBANE CITY SKYLINE AND, ON A CLEAR DAY, EVEN THE PACIFIC OCEAN.

In the Redbank Plains area, there's the **White Rock - Spring Mountain Conservation Estate**. The indigenous Ugarapul people request that you don't climb the White Rock formation but you're welcome to enjoy hiking, horse riding and mountain biking. A highlight is a medium-level 20-minute track where you can see caves, koalas and the relics of a WWII training bunker.

As well as impressive native flora and fauna, bike and horse riding trails, the **Flinders-Goolman Conservation Estate** now has eight bush camping sites with facilities at Hardings Paddock. If you like to climb mountains just because they're

there, the hike to Goolman Lookout will reward you with spectacular views of ancient mountain formations, the Brisbane city skyline and, on a clear day, even the Pacific Ocean.

If you're a city slicker at heart, why not experience a piece of nature right in Ipswich Central. The **Denmark Hill Conservation Park** is great for the weekend walker and families with short bushwalks, lots of wildlife, dinosaur fossils and a picnic area. Still got a bit of energy left? Take the stairs (there are a quite a few of them!) to the top of the water tower to see stunning 360-degree views.



Flinders-Goolman Conservation Estate

The Great Outdoors **Snippets**

CANOE AND KAYAK TRAILS



Canoe & kayak trails

If you're more taken with water-bound activity, but want more than just a paddle in the shallows, try your hand at canoeing or kayaking.

Covering a distance of 82kms from the Spillway Common (below Wivenhoe Dam) to Joseph Brady Park at Barellan Point, designated trails along the Ipswich reaches of the Brisbane and Bremer Rivers range from leisurely day excursions to full-on, muscle-flexing three or four day excursions.

Ready to flex your muscles, call the Ipswich Visitor Information Centre on (07) 3281 0555 for more information about canoeing in Ipswich.

GOLF

For the serious golfer (and we all know there's nothing funny about golf!), playing a round on the Greg Norman designed Brookwater Golf Course is pretty special. After all, Golf Australia Magazine ranked it as Queensland's number one public access golf course. For dedicated or aspiring golfers, this 18 hole, par 72 championship course could be the ultimate golf challenge. Ready to address the ball? Visit www.brookwater.com.au

The classic Ipswich Golf Course is another notable destination for golf enthusiasts. Enjoy a round or two on the Wayne Grady designed 18-hole course and then head to the clubhouse for quality bistro dining in a family-friendly atmosphere. Need a tee-off time? www.ipswichcountryclub.com.au



Brookwater Golf & Country Club

PARKS FOR FUN AND FITNESS



Parks for man's best friend

Limestone Park, located on the fringe of Ipswich Central, is fitness utopia with its special 'Life Trail' exercise stations, a network of running tracks and wide, open spaces ideal for kicking a ball around.

Ipswich has also catered for man's best friend and dogs are welcome in most of Ipswich's parks as long as they remain on a leash – but better still – dedicated off-leash dog parks are provided across the City for dog owners to get out and get active with their special companions.

**Present this advert for a
10% discount on your next trip!**

- ✓ **School Transfers**
- ✓ **Educational Tours**
- ✓ **Transfers & Shuttles**
- ✓ **Conferences & Large Events**

Southern Cross Transit is your group transport specialist for school excursions, tours and transfers across Brisbane, the Sunshine Coast and beyond. Our fleet of modern buses and coaches, experienced operations staff and friendly drivers ensure your travels exceed expectations.



Phone: **(07) 3812 2520**

Email: enquiries@southerncrosstransit.com.au

www.southerncrosstransit.com.au

...providing public transport for the Greater Brisbane Region





HAVING TEA WITH FRIENDS WAS ALWAYS THE BEST FUN.

Stumps Hotel

Wining & Dining

Whether you're after a casual chow down or a gastronomic indulgence, there's food for the body and soul in Ipswich.

New kid on the block is Pumpyard Bar and Brewery in the heritage-listed former technical college. Enjoy a cold one from the ten taps of craft beer at the home of the microbrew, 4 Hearts Brewing. The menu includes beer-related treats such as a beef cheek burger with the beef braised in stout. Surrounded by huge stainless steel brewing tanks in the bar area, this is truly nirvana for beer and food lovers alike. In fact, craft beers and great food are a bit of speciality in Ipswich – check out the PA Hotel (Booval) and Alehouse 24 (Yamanto) to whet the appetite.

Wine lovers should head out to Ironbark Ridge Vineyard at Purga. As part of the Scenic Rim Wine Trail, the award-winning Ironbark has its Cellar Door tastings in a former 1920s miners' cottage and is only 40 minutes from Brisbane.

Locally sourced produce and the 'paddock-to-plate' essence are creatively fused by award-winning chef, Ash Martin, at Homage Restaurant at Spicer's Hidden Vale. The good news is you don't have to be a house guest to indulge in these gastronomic delights, but reservations are definitely recommended. Stay the night and enjoy a gourmet breakfast on the restaurant's verandah with million-dollar views or check out their Sunday lunches with live jazz.

“ SURROUNDED BY HUGE STAINLESS STEEL BREWING TANKS IN THE BAR AREA, THIS IS TRULY NIRVANA FOR BEER AND FOOD LOVERS ALIKE.

Hotel, motels and resorts are generally regarded as a great place to eat and this is certainly the case in Ipswich. Choices include Platform 9; Heritage Restaurant & Piano Bar; Medium-Rare; Woodlands of Marburg; and BLVD Restaurant – for more information check out the 'eat & drink' section at www.discoveripswich.com.au

Perhaps you prefer to mix your wining and dining with a bit of fun and entertainment. Well, with a legacy of sporting legends and a passion for participation in sports, Ipswich is home to some great clubs that fit the bill – Ipswich Jets Rugby League Football Club, Brothers Leagues Club Ipswich and Swifts Sports Club, just to mention a few. And with special facilities for the kids, they are the idea choice for a family night out.



Homage, Spicers Hidden Vale



WHEN IT COMES TO WINING AND DINING IN IPSWICH YOUR OPTIONS ARE ABUNDANT. CHOOSE FROM A MENU OF QUIRKY CAFES, FAMILY-FRIENDLY CLUBS, REINVIGORATED PUBS AND SOPHISTICATED RESTAURANTS SERVING UP A MIX OF INTERNATIONAL AND MODERN AUSTRALIAN CUISINE IN FORMAL OR CASUAL SETTINGS.

Cactus Espresso Bar

Cactus provides a range of delicious breakfast and lunch options as well as fine espresso coffee.

Open Monday to Friday (7am - 3.30pm) and weekends (7am - 2pm). Cactus is also a great function venue for up to 50 people.

173 Brisbane St, Ipswich QLD 4305
 T: (07) 3282 8299
 E: cactusespresso@gmail.com
 www.facebook.com/cactusespressobar



Helicopter Wine and Country Pub Tours

Looking to add zest to your wining and dining experience? Want to tantalise your tastebuds at some of the region's boutique wineries? Prefer the traditional Aussie Pub Crawl? How about creating unforgettable memories? It's all possible with Pterodactyl Helicopters... getting there is half the fun!

479 Lake Manchester Rd, Kholo QLD 4306
 T: (07) 3201 0005 or 0417 727 532
 E: mike@pterodactyl.com.au
 W: www.ipswichheli.info



Homage

Ash and his team design menus inspired by local produce that they hand select daily. Menus change based on what is harvested that day. Whether it's fresh seasonal vegetables handpicked from our market garden, local freshwater cray or beef from our own property, this is dining in its purest form.

617 Grandchester Mt Mort Rd, Grandchester QLD 4340
 T: 1300 179 340
 E: reception.hiddenvale@spicersretreats.com
 W: www.spicersretreats.com



Ipswich Jets Rugby League Football Club

A friendly club with a coffee shop that is open from 10am to close. Restaurant that opens at 11.30am for lunch and 5.30pm for dinner 7 days a week. 120 of the latest gaming machines. Courtesy buses that can get you to the club safely. Open from 10am daily till late. Ipswich's Favourite Club!

Cnr Downs & Lowry Sts, North Ipswich QLD 4305
 T: (07) 3202 1887
 E: info@ipswichjets.com.au
 W: http://leagues.ipswichjets.com.au



Ironbark Ridge Vineyard

Immerse yourself in the views. Enjoy our award winning wines including Chardonnay, Shiraz, Verdelho and Fortified Wines. Platters, coffee & cake available. Functions welcome.
 OPEN: 10am to 5pm (TUESDAY TO SUNDAY AND PUBLIC HOLIDAYS).



478 Middle Rd, Purga QLD 4306
 T: (07) 5464 6787
 W: www.ironbarkridge.com.au
 F: www.facebook.com/IronbarkRidgeVineyard

Medium Rare Chargrill and Bar

The BEST Steaks in Ipswich!
 Located in the Country Comfort Motel - Ipswich.
 Open to the public for dinner Monday to Saturday. Function rooms available for weddings, conferences and other events.



250 South Station Rd, Raceview QLD 4305
 T: (07) 3202 4622
 E: reservations.ipswich@countrycomforthotels.com
 W: www.mediumrareipswich.com.au

PA Hotel

- Relaxed atmosphere
- Great place to celebrate
- Extensive menu
- Best steaks in Ipswich
- Over 30 Cocktails and 24 beers on taps to choose from
- BOOKINGS ESSENTIAL



170 Brisbane Rd, Booval QLD 4304
 T: (07) 3282 1577
 W: www.char-d.com.au
 F: www.facebook.com/charsteakhouse

Phippsy's Marburg

Tantalise the senses with a stop at Phippsy's Marburg. Tempt your tastebuds with delicious fare from our all-day breakfast menu, main meals, sweet treats and orgasmic coffee. Inhale the heady fragrance of fresh cut flowers or choose from a range of plants at the nursery. Open 7 days.



207 Edmond St, Marburg QLD 4346
 T: (07) 5434 4134
 E: info@phippysmarburg.com.au
 W: www.phippysmarburg.com.au

Platform 9 Bar and Restaurant

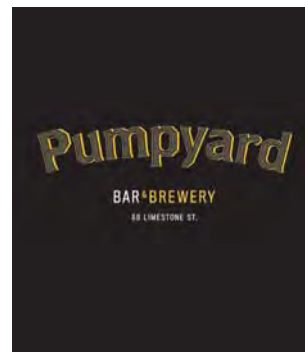
Platform 9 Restaurant and Bar Ipswich is the preferred dining spot for visitors and locals alike. So whether you require a five star a-la-carte dinner or just want to pop in for coffee with friends, Platform 9 Restaurant and Bar Ipswich is the best place in town.
 The restaurant is open 7 days 'till late.



43 South St, Ipswich QLD 4305
 T: (07) 3812 8077
 E: ipswich@MetroHG.com
 W: www.metrohotels.com.au

Pumpyard Bar and Brewery

Our showcase micro brewery is one of the few places in Australia where you can drink and dine next to the brewing tanks. With 10 taps of locally produced beer and hearty bar meals, produced with local produce, it's a true local beer and food experience. Open most days for lunch and dinner.



Building C, 88 Limestone St, Ipswich QLD 4305
 T: (07) 3282 9076
 W: www.4heartsbrewing.com
 F: www.facebook.com/fourheartsbrewing

Royal Hotel Harrisville

NOT JUST A PUB. This historic hotel has a relaxing feel for the whole family. We offer quality affordable food open verandas beer garden we cater for all occasions room for kids to play. Come in and experience our authentic country hospitality. Open Tue night to Sun night for lunch & dinner



Cnr Queen St & Dunns Ave, Harrisville QLD 4307
 T: (07) 5467 1882
 E: smpatrick@bigpond.com
 W: www.royalhotelharrisville.com.au

Check out Ipswich's full menu of dining options at:

www.discoveripswich.com.au

Live in 2015



For a full line-up of events at Ipswich Civic Centre and Studio 188, visit us online or phone (07) 3810 6100 to request a copy of our brochures.




www.ipswichciviccentre.com.au

 @TheCivicCentre

 facebook.com/ipswichciviccentre



www.studio188.com.au

 @Studio_188

 facebook.com/studio188ipswich



Events Calendar

THE MARK OF ANY GREAT CITY IS ITS CAPACITY TO ATTRACT AND STAGE MAJOR EVENTS, AND IPSWICH IS TEEMING WITH THESE IN 2015. MUSIC FESTIVALS, ARTS AND CULTURE, FAMILY FUN, CYCLING, RUNNING, HORSE RACING AND FANTASTIC MOTOR SPORTS DELIVER ENTERTAINMENT AND EXCITEMENT THROUGHOUT THE YEAR.

FEBRUARY

7
Powercruise 1 Day Powerplay
 Queensland Raceway
 Champions Way, Willowbank
www.powercruise.com

13-16
Earth Frequency Festival
 Ivory's Rock Conventions & Events Centre
 Mt Flinders Rd, Peak Crossing
www.earthfrequency.com.au

22
Nostalgia Drags
 Willowbank Raceway
 Champions Way, Willowbank
www.willowbankraceway.com.au

MARCH

7-8
Ipswich Plant Expo
 Ipswich Turf Club
 T L Cooney Ave, Bundamba
www.plantexpo.com.au

13-15
CMC Rocks QLD
 Willowbank Raceway
 Champions Way, Willowbank
www.cmcrocks.com

22
Teddy Bear's Picnic
 The Workshops Rail Museum
 North St, North Ipswich
www.theworkshops.qm.qld.gov.au

27-28
Adventure Race Australia
 Kholo Gardens
 243 Riverside Dr, Muirlea
www.adventureraceaustralia.com.au

29
Heritage Bank Ipswich 100 Bike Ride
 University of Southern Queensland (Ipswich Campus)
 11 Salisbury Rd, Ipswich
www.ipswich100.com.au

APRIL

4
Santos Super 3 Extreme Drag Race
 Willowbank Raceway
 Champions Way, Willowbank
www.willowbankraceway.com.au

4-5
Kona Hidden Vale 24hr Mt Bike Relay
 Hidden Vale Adventure Park
 617 Grandchester Mount Mort Rd, Grandchester
www.hiddenvale24hr.com.au

17 - 3 May
Ipswich Festival
 Venues throughout Ipswich
www.ipswichfestival.com.au

19
Ipswich Gala Doll Fair
 Ipswich Civic Centre
 Nicholas St, Ipswich
 T: (07) 3282 2434

19
Queensland Autospectacular
 Willowbank Raceway
 Champions Way, Willowbank
www.willowbankraceway.com.au

19
Watercress Creek Olive Festival
 Watercress Creek Olives & Limes
 53 Bryces Rd, Pine Mountain
www.watercresscreekolivesandlimes.com.au

25
100th Anniversary of the landing of ANZACs in Gallipoli - Parade and Commemoration Service
 Ipswich CBD & North Ipswich Reserve
www.ipswich.qld.gov.au

MAY

2
One Mile Gift Race Day
 Ipswich Turf Club
 T L Cooney Ave, Bundamba
www.ipswichonemilegift.com.au

8-9
Marburg Show
 Marburg Showgrounds
 45 Queen St, Marburg
www.marburgshow.com.au

9
Great Houses of Ipswich
 3 private homes in Ipswich
www.nationaltrust.org.au/qld

15-17
Ipswich Show
 Ipswich Showgrounds
 81 Salisbury Rd, Ipswich
www.ipswichshow.com.au

16
Spartan Race
 Ivory's Rock Conventions & Events Centre
 Mt Flinders Rd, Peak Crossing
www.spartanrace.com.au

17

National Motoring Heritage Day
Queens Park
Goleby Ave, Ipswich
www.qhmc.org.au

JUNE

4-7

FUCHS Winternationals
Willowbank Raceway
Champions Way, Willowbank
www.willowbankraceway.com.au

13

Ipswich Cup
Ipswich Turf Club
T L Cooney Ave, Bundamba
www.ipswichturfclub.com.au

19-21

Rosewood Show
Rosewood Showgrounds
1 Railway St, Rosewood
www.rosewoodshow.com

27 - 12 July

Lego
The Workshops Rail Museum
North St, North Ipswich
www.theworkshops.qm.qld.gov.au

JULY

11-12

Giant 3PLUS3 - A Mountain Bikers Christmas
Hidden Vale Adventure Park
617 Grandchester Mt Mort Rd,
Grandchester
www.3plus3.com.au

19

Color Run
Robelle Domain
155 Southern Cross Cct,
Springfield Central
www.thecolorrun.com.au

26

Grandchester Steamfest
Grandchester Railway Station
Rosewood-Laidley Rd, Grandchester
www.steamfest.org.au

26

Ipswich Park2Park Half Marathon
Limestone Park
Lion St, Ipswich
www.park2park.com.au

31 - 2 August

Coates Hire Ipswich Super Sprint (V8 Supercars)
Queensland Raceway
Champions Way, Willowbank
www.v8supercars.com.au

AUGUST

2

Ipswich Open Day
The Workshops Rail Museum
North St, North Ipswich
www.theworkshops.qm.qld.gov.au

7-9

Shannons National Motor Racing Championships
Queensland Raceway
Champions Way, Willowbank
www.thenationals.com.au

7-9

Ipswich Little Theatre 61st One Act Play Festival
Incinerator Theatre
Burley Griffin Dr, Ipswich
www.ipswichlittletheatre.com.au

9

Nostalgia Drags
Willowbank Raceway
Champions Way, Willowbank
www.willowbankraceway.com.au

14-16

Australasian Superbike & Australian FX-Superbike Championships
Queensland Raceway
Champions Way, Willowbank
www.qldraceways.com.au

27-30

Queensland Golf Open
Brookwater Golf & Country Club
Tournament Dr, Brookwater
www.golfqueensland.org.au

29

Brisbane Jamboree (Drag Racing)
Willowbank Raceway
Champions Way, Willowbank
www.jamboree.com.au

SEPTEMBER

5

Rosewood Festival
Venues throughout Rosewood
www.rosewoodfestival.com.au

10-13

Powercruise #56 Brisbane
Queensland Raceway
Champions Way, Willowbank
www.powercruise.com

12-13

Flight Centre Active Travel Cycle Epic
Hidden Vale Adventure Park
Grandchester Mt Mort Rd,
Grandchester
www.cycleepic.com

27

Ipswich Doll Bear & Craft Fair
Ipswich Civic Centre
Nicholas St, Ipswich
T: (07) 3282 2434

OCTOBER

23-25

Goodna Jacaranda Festival
Evan Marginson Park
6 Layard St, Goodna
www.goodnajakarandafestival.com

24-25

Queensland Model Railway Show
The Workshops Rail Museum
North St, North Ipswich
www.theworkshops.qm.qld.gov.au

24

Dingo Duo
Hidden Vale Adventure Park
Grandchester Mt Mort Rd,
Grandchester
www.dingoduo.com.au

DECEMBER

26 - Jan/Feb 2016

Day out with Thomas 2016
The Workshops Rail Museum
North St, North Ipswich
www.theworkshops.qm.qld.gov.au



MARKETS

The Handmade Expo
Ipswich Turf Club,
T L Cooney Ave, Bundamba
T: 0488 791 379
W: thehandmadeexpo.com.au
Third Saturday of each Month
(8am to 2pm)

Oz Night Market
Booval Fair, 139 Brisbane Rd,
Booval
T: (07) 3123 2800
W: oznightmarket.com.au
Every Saturday (5:30pm to 10pm)

Peak Organics Farm Gate Market
Ivory's Rock Conventions & Events Centre, Mt Flinders Rd,
Peak Crossing
T: (07) 3288 8945
W: peakorganics.com.au
Every Saturday (9am to 2pm)

The Old Flour Mill Twilight Markets
The Old Flour Mill,
227-231 Brisbane St, Ipswich
W: theoldflourmillmarkets.com
Third Friday of each month
(4pm to 8pm)

Tivoli Twilight Markets
Tivoli Drive-In, 50 Coal Rd,
Chuwar
T: 0488 849 654
W: facebook.com/
TivoliTwilightMarket
Every second Saturday
(4pm to 7pm)

Showplace (Trash & Treasure) Markets
Ipswich Showgrounds,
81 Warwick Rd, Ipswich
T: (07) 3281 1577
W: ipswichshow.com.au
Every Sunday (6am to 11:30am)

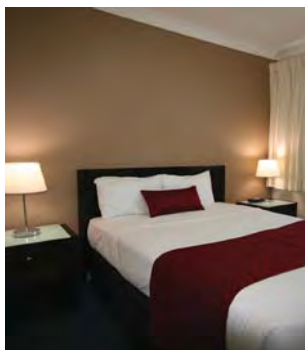


Accommodation

WHEN IT'S TIME TO REST YOUR WEARY HEAD, YOU'LL FIND A BED THAT'S JUST RIGHT! CHOOSE FROM SMART HOTEL ROOMS AND CONTEMPORARY, APARTMENT STYLE DIGS; CONVENIENT, FRIENDLY MOTELS AND CHARMING B&BS. VENTURE OUTSIDE THE CITY AND ESCAPE TO A LUXURY RURAL RESORT, UPSCALE HERITAGE SPLENDOUR OR ELEGANT BOUTIQUE HOTEL.

Best Western Ipswich Heritage Motor Inn

- Best position; Best rooms; Best rates
- Earn FlyBuy or Qantas Frequent Flyer points while you sleep or dine!
- The Heritage Restaurant & Piano Bar



51-55 Warwick Rd, Ipswich QLD 4305
 T: (07) 3202 3111
 E: admin@ihmi.com.au
 W: www.ihmi.com.au

Camping in Hardings Paddock

Take the family camping in an authentic natural bushland setting, just 45 minutes from the Brisbane CBD. This beautiful spot is located in a secluded section of Hardings Paddock Picnic Area, at the hub of seven great walking trails through the Flinders-Goolman Conservation Estate.



Carmichaels Road, Goolman QLD 4306
 T: (07) 3281 0555
 E: info@discoveripswich.com.au
 W: www.discoveripswich.com.au/pages/camping

Central Motel Ipswich

- 14 spacious air conditioned units with own bathroom.
- Free under cover parking and wireless broadband (conditions apply).
- Located in easy walking distance to Queens Park, hospitals, medical specialist centre and restaurants.



Cnr Limestone & Thorn Sts, Ipswich QLD 4305
 T: (07) 3281 2100
 E: info@centralmotelipswich.com
 W: www.centralmotelipswich.com

Country Comfort Ipswich

Offering 45 well appointed, spacious rooms, Country Comfort Ipswich offers friendly and professional service to ensure an enjoyable stay. Off-street and large vehicle parking, swimming pool, BBQ area, bar and restaurant make this property ideal for short or extended stays.



250 South Station Rd, Raceview QLD 4305
 T: (07) 3202 4622
 E: reservations.ipswich@countrycomforthotels.com
 W: www.ipswichcountrycomfort.com.au

Mary's Place B&B

Welcome to my place! In our 1928 Bungalow, we offer you wonderfully comfortable beds, exquisite linen & service to match. Overnight or long term stays available. Your choice of 2 Queen or 1 Double sized rooms or book the whole house. B&B or full board by arrangement. Convenient inner city location.

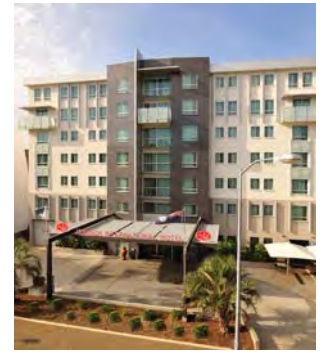
5 Court Street, Ipswich QLD 4305
T: 0401 358 855
E: marysplace4u@bigpond.com
W: www.marysplaceipswich.com.au



Metro Hotel Ipswich International

The only 4½ star, full service hotel in Ipswich, offering spacious and modern hotel rooms as well as family-friendly one bedroom apartments. Complimentary WiFi available to all guests. This city centre hotel is located next door to the Ipswich Civic Centre.

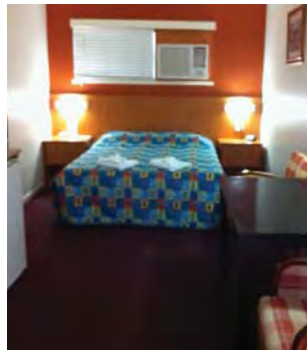
43 South St, Ipswich QLD 4305
T: (07) 3812 8077
E: Ipswich@MetroHG.com
W: www.metrohotels.com.au



Motel Monaco

Spend a night, not a fortune. All ground floor units, deluxe & standard air-conditioned budget rooms. Swimming pool, BBQ, complimentary Foxtel. Interconnecting rooms for groups & families. Central location. Close to train station, Riverlink shopping centre & award winning Railway museum.

28 Downs St, North Ipswich QLD 4305
T: (07) 3281 4200
E: motel.monaco@hotmail.com



Oaks Aspire

Oaks Aspire sets the benchmark for apartment style accommodation in the heart of Ipswich. Self-contained accommodation options include studios or spacious 1, 2 & 3 bedroom apartments with full kitchen and laundry amenities. Onsite facilities include a gym, lap pool, sauna, spa and BBQ area.

1 West St, Woodend QLD 4305
T: 1300 660 467
E: aspire@theoaksgroup.com.au
W: www.oakshotelsresorts.com



Quest Ipswich

Quest Ipswich offers 4 star self-contained studio rooms and spacious 1, 2 and 3 bedroom apartments close to the CBD, Willowbank and Amberley. Complete with outdoor pool, BBQ area, conference room and onsite parking. Suitable for families or corporate travellers staying overnight or longer.

57-63 Warwick Rd, Ipswich QLD 4305
T: (07) 3813 6000
E: questipswich@questapartments.com.au
W: www.questipswich.com.au



Spicers Hidden Vale

With 12,000 acres of destination and flavour, Spicers Hidden Vale is the perfect place to visit for a day trip or to settle in for overnight. With activities, day spa, award winning restaurant, expansive 89 bed market garden and regular concerts and events, there really is something for everyone!

617 Grandchester Mt Mort Rd, Grandchester QLD 4340
T: (07) 5465 5900
E: reception.hiddenvale@spicersretreats.com
W: www.spicersretreats.com



Springfield Lakes Hotel

- Stunning 4½ star 20 room boutique hotel accommodation with free parking and wifi.
- BLVD Restaurant and Bar onsite, plus pool, laundry facilities and fitness room.
- Ideal place to stay for Brookwater Golf Course, functions at SpringLake Hotel, or travel to Springfield Central and surrounds.

1 Springfield Lakes Blvd, Springfield Lakes QLD 4300
T: (07) 3818 9600
E: stay@springfieldlakeshotel.com.au
W: www.springfieldlakeshotel.com.au



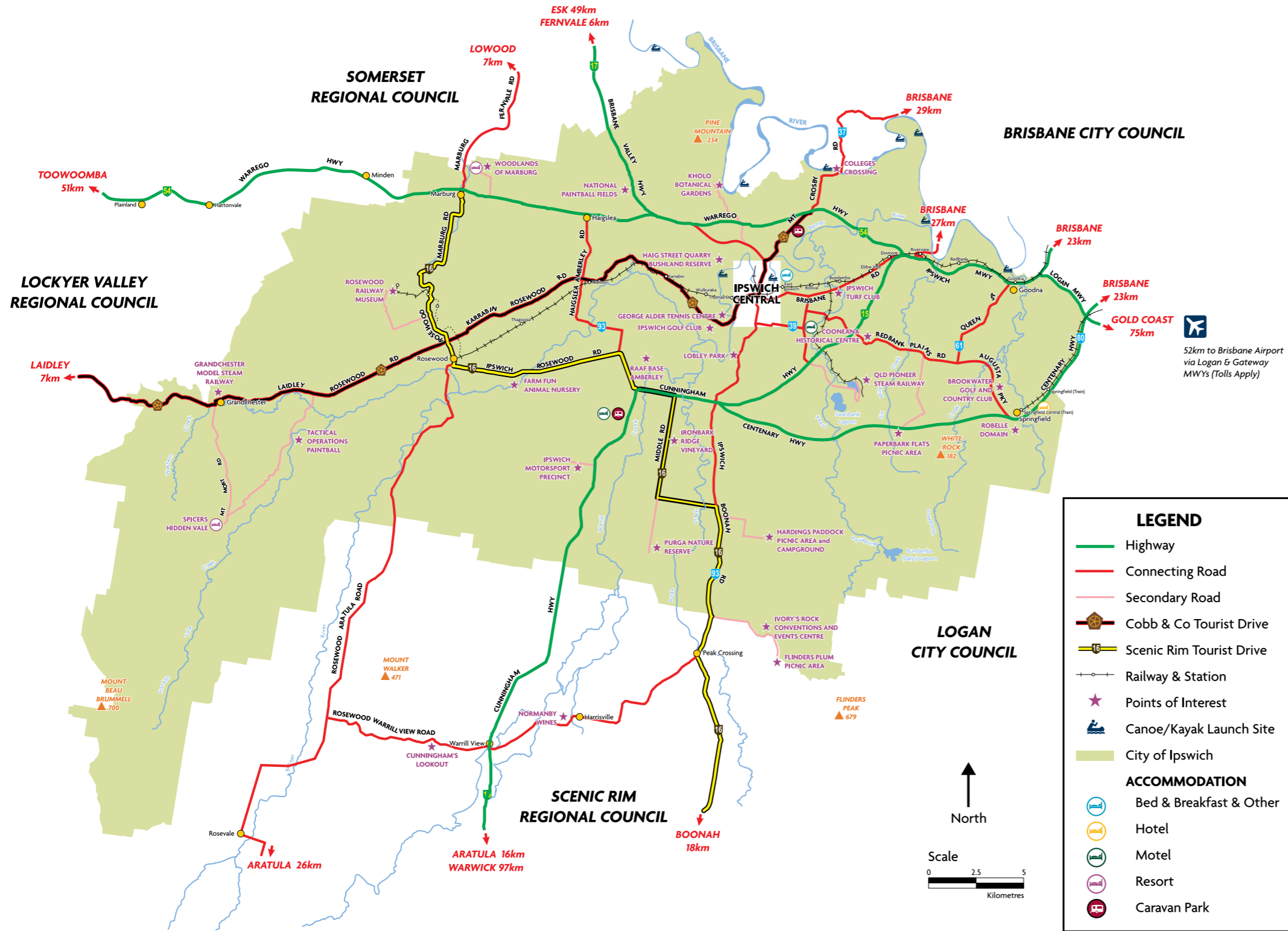
Book your accommodation online at:



www.discoveripswich.com.au



Ipswich Regional Map



Travel Info

DRIVE TIMES & DISTANCES TO IPSWICH

	Distance	Time
Brisbane	39km	40min
Brisbane Airport	53km	55min
Gold Coast	97km	80min
Gold Coast Airport	116km	95min
Toowoomba	100km	85min

TRAVELLING TO IPSWICH

BY ROAD:

Ipswich is located at the nexus of five major arterial roads allowing for easy access.

From the East: The Ipswich Motorway links Ipswich to Brisbane.

From the West: The Warrego Highway (National Highway A2) links Ipswich to major regional centres including Toowoomba, Roma & Charleville.

From the North: The Brisbane Valley Highway (National Route 17) links Ipswich to major regional centres including Esk & Kingaroy.

From the South-West: The Cunningham Highway (National Highway 15) links Ipswich to major regional centres including Warwick & Stanthorpe, along with the New England Highway from New South Wales.

From the South-East: The Logan Motorway links Ipswich to the Gold Coast and Pacific Highway from New South Wales, along with the Gateway Motorway from Brisbane Airport & Sunshine Coast.

BY TRAIN:

The Brisbane Citytrain network provides regular connections from Brisbane to Ipswich and Springfield, with connections to the Gold & Sunshine Coast rail lines. For more information about train timetables and fares go to www.translink.com.au

You can also travel to Ipswich via Airtrain from the Brisbane Airport, with a change over to the Citytrain network at Roma Street or Central Stations. For more information visit: www.airtrain.com.au

BY BUS:

Daily bus connections are available from the Brisbane Transit Centre in Brisbane. For more information contact the Greyhound Australia on (07) 3336 5591.

TRANSFERS:

Bus transfers are available for door-to-door shuttle services to and from Brisbane Domestic and International airports as well as the Brisbane cruise terminal. Bookings are essential and must be made 2 full working days prior to the service being provided. Limousine and group coach transfers are also available. Contact the Ipswich Visitor Information Centre on (07) 3281 0555 or via email to info@discoveripswich.com.au for bookings and more information.

IPSWICH CLIMATE

	Avg. Min Temp	Avg. Max Temp	Avg. Daily Rain
Autumn	11.0°C	26.8°C	2.1mm
Winter	6.2°C	21.8°C	1.2mm
Spring	13.1°C	27.6°C	2.1mm
Summer	19.2°C	30.8°C	4.0mm



**THE WORKSHOPS
RAIL MUSEUM**

IPSWICH

**BIG
LOUD
FUN**



LET OFF SOME STEAM WITH A **HANDS-ON**
HERITAGE EXPERIENCE AT AUSTRALIA'S
OLDEST RAILWAY WORKSHOPS

North Street, North Ipswich | Phone: (07) 3432 5100 | info@theworkshops.qm.qld.gov.au
Open daily 9:30am to 4:00pm (except Good Friday, ANZAC Day and Christmas Day)



The Workshops Rail Museum



theworkshops.qm.qld.gov.au