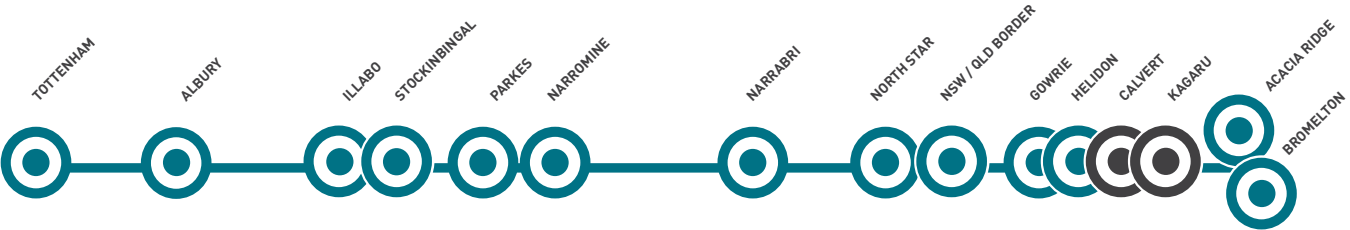


CALVERT TO KAGARU – INLAND RAIL PROJECT UPDATE

The Calvert to Kagaru project team are continuing to work on the proposed rail design, meet landowners and stakeholders and gather data as part of the Environmental Impact Statement (EIS). This is part of determining the project’s feasibility.

Please note that the proposed design is not final and may change based on further investigations and approvals. We will keep you updated as the design progresses and advise of any updates.

It is anticipated that the EIS will be submitted to the Coordinator-General in the second half of this year. The Inland Rail project team will notify you when the EIS is available for public comment and will also provide information on how our stakeholders can make submissions.



C2K INLAND RAIL PROJECT

The Calvert to Kagaru (C2K) section is one of 13 projects that complete the Inland Rail program of works. This section involves the design and construction of approximately 53 km of new dual gauge track.

PROJECT TIMELINE
CALVERT TO KAGARU

✓

Concept assessment
2015–2016

○

Project feasibility
2017–mid 2019

○

Project assessment
mid 2019–mid 2020

○

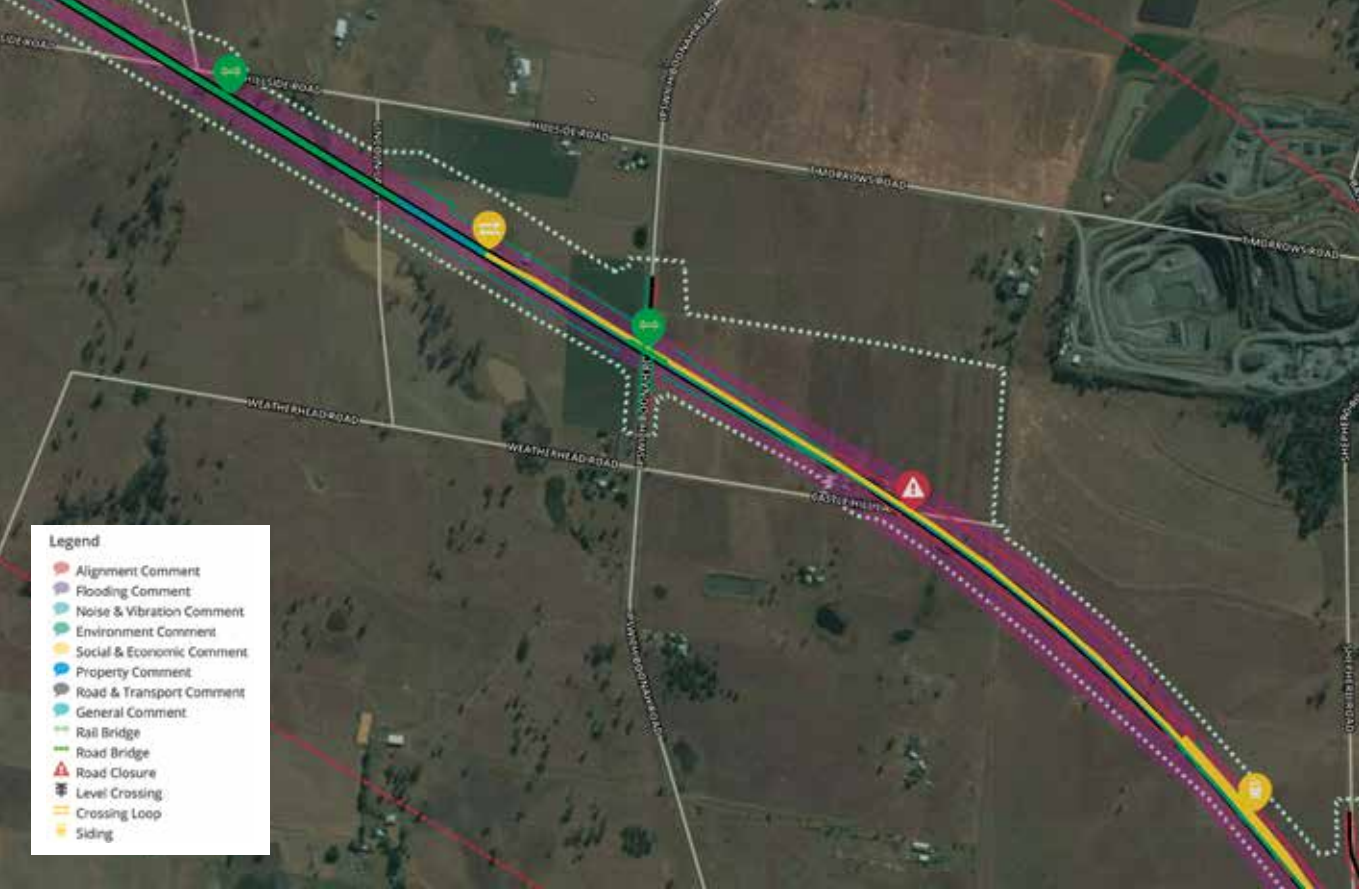
Project approval
mid 2020

○

Construction
2021–2024

○

Operation



UPDATE OF C2K INTERACTIVE MAP

As the design for the proposed alignment progresses, the project team have updated our online map to reflect these changes. There is a host of new detail on the map including crossing loops, levels crossings, bridges, a tunnel and road realignments.

Thank you to those who contributed to the first online map for C2K. Comments on that first version have now closed. We are now seeking feedback on the updated design, please visit the online map and add any comments, questions or feedback that you may have at artc.mysocialpinpoint.com.au/c2k

We will also provide interactive map stations for use during the community information sessions and staff will be available to assist you in using this online platform.

MENTAL HEALTH SUPPORT

ARTC acknowledges that the uncertainty for landowners and communities while we continue to plan the project can be stressful. If you are experiencing stress, depression and/or anxiety, please call **1300 971 309** to speak to a local, independent service, and access support either face-to-face or on the telephone.

WANT TO KNOW MORE?

ARTC is committed to working with landowners, communities, state and local governments as a vital part of our planning and consultation work, and we value your input. If you have any questions or comments, please let us know.

- 1800 732 761
- inlandrailqld@artc.com.au
- ARTC Inland Rail, GPO Box 2462, Brisbane QLD 4001

inlandrail.com.au



The Australian Government is delivering Inland Rail through the Australian Rail Track Corporation (ARTC), in partnership with the private sector.

CURRENT AS AT APRIL 2019



INLAND RAIL

NEWSLETTER

QLD

ABOUT INLAND RAIL

The Calvert to Kagaru (C2K) section is one of 13 projects that complete the Inland Rail program of works. This section involves the design and construction of approximately 53 km of new dual gauge track. It generally follows the protected Southern Freight Rail Corridor (SFRC) that was gazetted as a Future Rail Corridor by the Queensland Government in 2010.



E-NEWS

Please sign up for our Calvert to Kagaru online newsletter to remain up to date on the project. Simply follow these easy steps:

- Complete the registration form on our website here: inlandrail.artc.com.au/register
- Indicate which project you are interested in (you may select multiple if you wish).
- You will be added to that project email distribution list and receive updates in your inbox!

COMMUNITY INFORMATION SESSIONS

Inland Rail will be holding community information sessions in May 2019 to share and discuss findings from the investigations that have been carried out in the project study area.

These findings include:

- Rail Alignment
- Project Approvals
- Land Use and Property
- Soils
- Flora and Fauna
- Air Quality
- Noise and Vibration
- Flooding / Water Quality
- Social Impact Assessment
- Heritage Aboriginal and European

Community members and landowners are encouraged to visit our sessions and ask any questions they may have.

Please register your interest via email: Inlandrailqld@artc.com.au or call **1800 732 761**.

| Date | Location | Time |
|-----------------------|-----------------------------------|--------------|
| Tuesday 21 May 2019 | The Centre, Beaudesert | 4 pm – 7 pm |
| Wednesday 22 May 2019 | Rosewood Community Hall | 4 pm – 7 pm |
| Thursday 23 May 2019 | Peak Crossing Hall, Peak Crossing | 2 pm – 4 pm |
| Friday 24 May 2019 | Purga Community Hall, Purga | 4 pm – 7 pm |
| Saturday 25 May 2019 | Peak Crossing Hall, Peak Crossing | 9 am – 12 pm |

We value your input and hope to see you at one of the community information sessions.

inlandrail.com.au

1800 732 761

CROSSING LOOPS

Four crossing loops are proposed for the Calvert to Kagaru section. They will be single track, dual gauge to accommodate double stack freight trains up to 1.8 m long. The map below identifies the locations for the crossing loops.

- ▶ Ebenezer loop
- ▶ Purga Creek loop
- ▶ Washpool loop
- ▶ Undullah loop

EMBANKMENTS/CUTTINGS

The project alignment proposes approximately 30 embankments and 30 cuttings to allow the rail alignment to meet required operation levels.

Embankments range from approximately 150 m up to 4730 m in length and maximum height of embankment is 25 m. Cuttings range from approximately 120 m up to 1890 m in length and maximum depth of cutting is 43 m.

RAIL BRIDGES

The C2K section has identified 27 proposed bridge structures along the alignment. These include:

- ▶ Seven bridges proposed to cross over roads
- ▶ Three bridges proposed to cross over the rail (Locations are Mt Forbes Road, Cunningham Highway and Undullah Rd).

The bridges are of various lengths and spans to suit the alignment and topography. More detail can be found on the online interactive map listing each bridge, their approximate length and height.

RAIL BRIDGE OVER WATER

The proposed alignment intercepts 44 mapped watercourses from C2K. Watercourses provide fauna and habitat linkages, passage for fish and are prone to flooding in the wet season.

17 rail bridges have been designed to cross over waterways including Western Creek, Bremer Creek, Warrill Creek, Purga Creek, UT Purga Creek and Teviot Brook. In some cases some of these bridges also run over roads, please see the online interactive map for more detail.

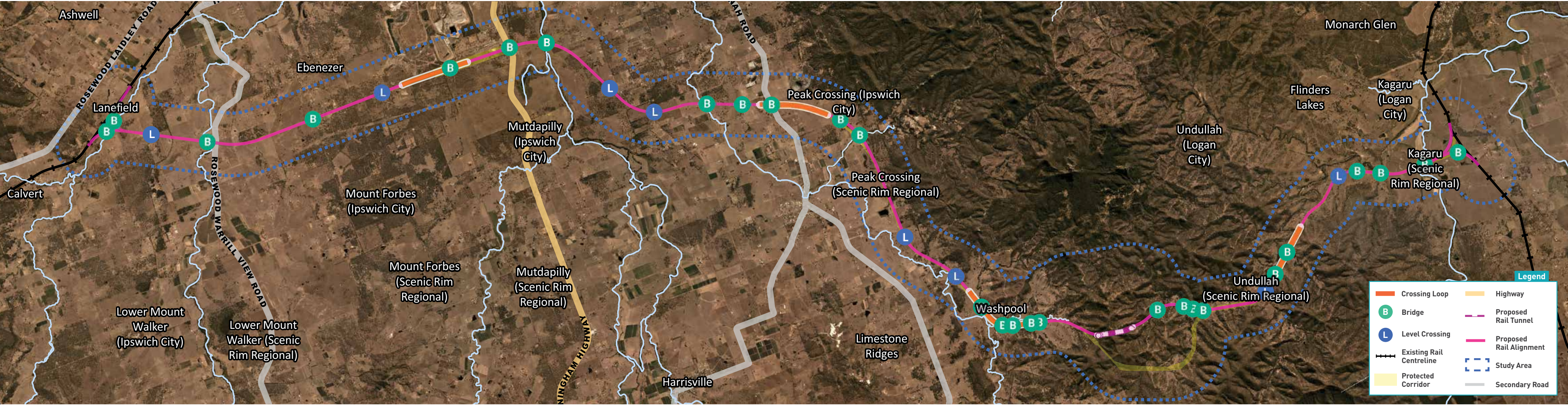
TUNNEL

The Teviot Range requires a tunnel to be constructed. The tunnel is approximately 1015 m long. The single-track single tunnel is to be designed for bi-directional freight operations.

LEVEL CROSSINGS

Eight level crossings are proposed in the Calvert to Kagaru sections. The suggested locations are: Hayes Road, M Hines Road, Glen Cairn Road, Middle Road, Dwyers Road, Washpool Road and two crossings at Wild Pig Creek Road. They have been marked on the map below and more detail on these level crossings can be seen on our online interactive map.

artc.mysocialpinpoint.com.au/c2k



A fly-through video is available on the Inland Rail website

Proposed Bremer River Rail Bridge



Artist impression only and subject to change.

Proposed Ipswich Boonah Rail Bridge



Artist impression only and subject to change.

Proposed Wild Pig Creek Road Level Crossing



Artist impression only and subject to change.