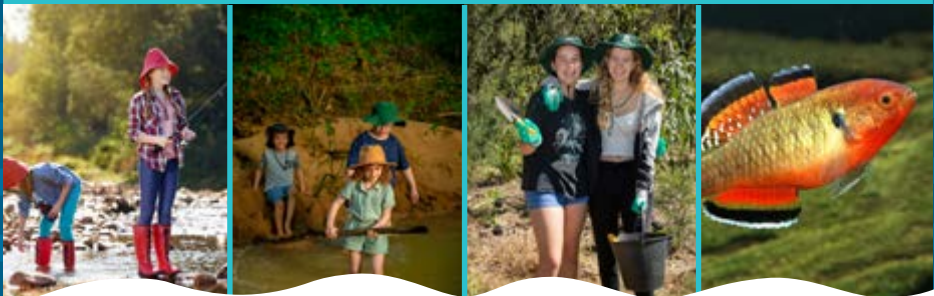


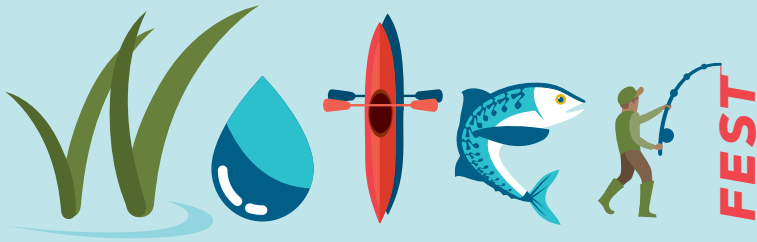
**MARCH – MAY 2024**

# ACTIVITY GUIDE

**HIGHLIGHTING IPSWICH'S  
VALUABLE WATERWAYS**



**See the full program and booking details at  
[ipswich.qld.gov.au/waterfest](https://ipswich.qld.gov.au/waterfest)**



## ACTIVITIES



### LEARN TO FISH SESSIONS

During the school holidays children can join a fishing activity at Joseph Brady Park, Barellan Point with council's Active Healthy program.

### CREEK NATURE PLAY

Families can join a nature play activity at Small Creek, Raceview during the school holidays with council's EnviroEd program.



### WATERWAY RESTORATION

Trees for Mum is a great way to honour the special women in your life and help improve waterway habitat on Mother's Day, Sunday 12 May.

### WATERFEST CELEBRATION

Family-friendly activities will be held at Queens Park Environmental Education Centre on Saturday 20 April. Catch, Snap and Win fishing competition winners will also be announced.



### PUGGLES PLAYTIME

Drop in to Queens Park Environmental Education Centre on Fridays between 9.30 am and 11.30 am for water-themed activities designed for children aged 5 and under.

Find the full program details at [lpswich.qld.gov.au/waterfest](https://lpswich.qld.gov.au/waterfest)



# CATCH, SNAP AND WIN

## IPSWICH-WIDE FISHING COMPETITION



**Get your rods ready! The competition runs from Thursday 28 March to Sunday 14 April. There are plenty of prizes including a kayak to be won.**

Hosted by council with 2 Bent Rods, this fun fishing competition will inspire you to get outdoors and appreciate Ipswich's creeks and rivers.

Go to [ipswich.qld.gov.au/waterfest](https://ipswich.qld.gov.au/waterfest) for more information.

### HOW TO ENTER

1. Download the 2 Bent Rods app via the Apple or Google Play stores and select the Catch, Snap and Win competition
2. Catch a fish
3. Use the app to provide photos of yourself with the fish, and the fish against a ruler.

### CATEGORIES

Entries are in Open (all ages) or Youth (12-25 years) categories.





- Random draw (all participants)
- Longest native fish
- Longest pest fish for removal
- Most fish caught overall and most pest fish.

### WINNERS

A total prize pool worth up to \$2,400 in value is up for grabs!

Winners will be announced on Saturday 20 April 2024 at a free family-friendly event at the Queens Park Environmental Education Centre.

**LEGEND:**

- Suitable for kayaks/canoes 
- Suitable for fishing from bank 
- Boat ramp access 
- Nature exploration 

**MT CROSBY WEIR  
NO FISHING**

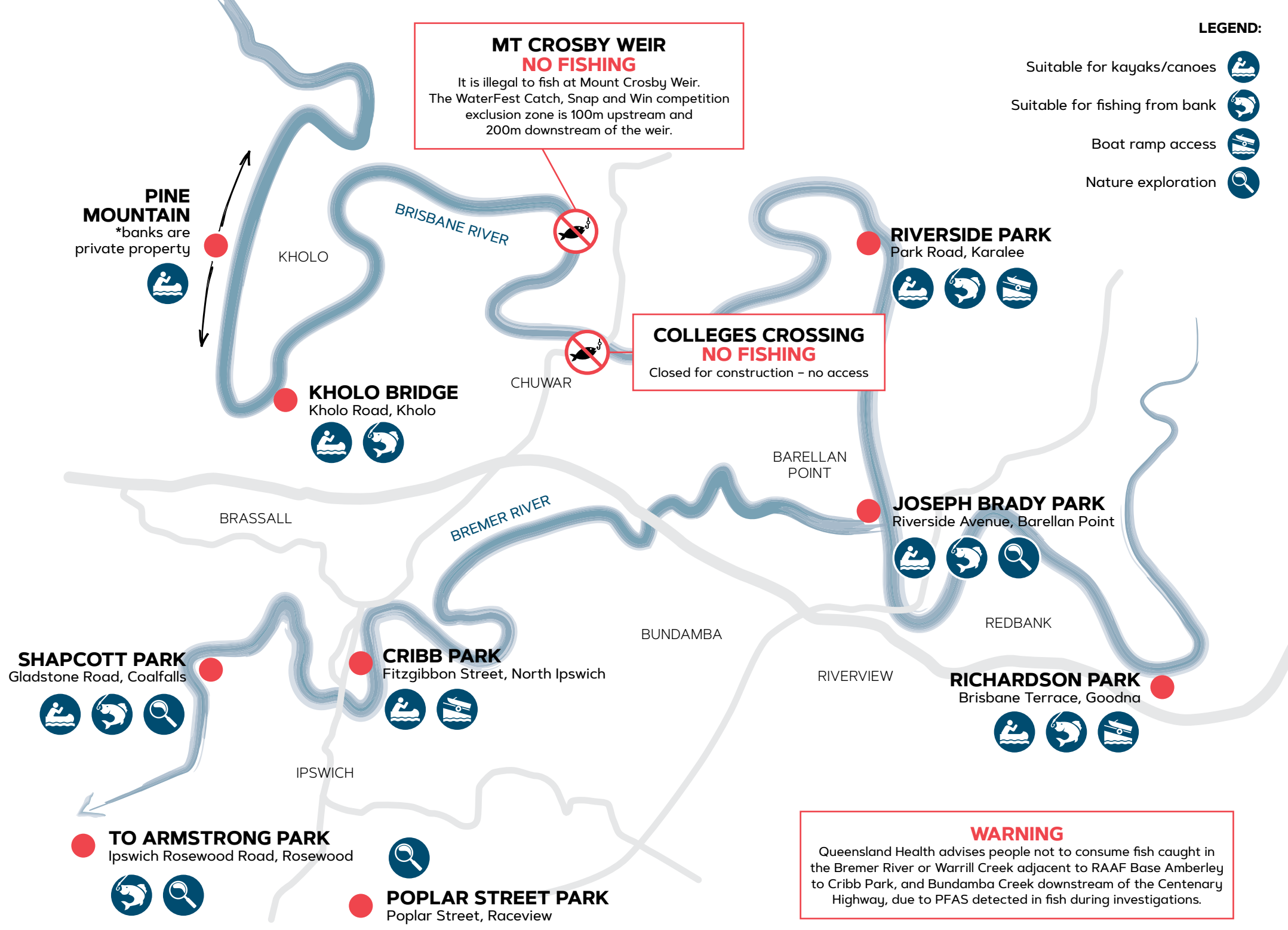
It is illegal to fish at Mount Crosby Weir. The WaterFest Catch, Snap and Win competition exclusion zone is 100m upstream and 200m downstream of the weir.



**COLLEGES CROSSING  
NO FISHING**

Closed for construction - no access

**WARNING**  
Queensland Health advises people not to consume fish caught in the Bremer River or Warrill Creek adjacent to RAAF Base Amberley to Cribb Park, and Bundamba Creek downstream of the Centenary Highway, due to PFAS detected in fish during investigations.



**PINE MOUNTAIN**  
\*banks are private property



KHOLO

BRISBANE RIVER

**RIVERSIDE PARK**  
Park Road, Karalee



**KHOLO BRIDGE**  
Kholo Road, Kholo



CHUWAR

**COLLEGES CROSSING  
NO FISHING**

BARELLAN POINT

**JOSEPH BRADY PARK**  
Riverside Avenue, Barellan Point



BRASSALL

BREMER RIVER

REDBANK

**SHAPCOTT PARK**  
Gladstone Road, Coalfalls



**CRIBB PARK**  
Fitzgibbon Street, North Ipswich



BUNDAMBA

RIVERVIEW

**RICHARDSON PARK**  
Brisbane Terrace, Goodna



IPSWICH

**TO ARMSTRONG PARK**  
Ipswich Rosewood Road, Rosewood



**POPLAR STREET PARK**  
Poplar Street, Raceview

# FOCUS FISH SPECIES

These are species you might hook during the Catch, Snap and Win fishing competition!

See [Ipswich.qld.gov.au/waterfest](http://Ipswich.qld.gov.au/waterfest) for competition details.



## EEL-TAILED CATFISH *Tandanus tandanus*

This native species likes slow-moving streams, lakes and ponds. It uses rocks and pebbles to build nests for their eggs.



## AUSTRALIAN BASS *Macquaria novemaculeata*

A prized native fish, Bass migrate between freshwater and estuarine habitats for spawning.



## YELLOWFIN BREAM *Acanthopagrus australis*

A popular fish for anglers, Bream can be found at a number of fishing spots across Ipswich, particularly estuarine habitats.



## DUSKY FLATHEAD *Platycephalus fuscus*

This is the largest Australian flathead species, commonly found in estuarine habitats.



## TILAPIA\*

This invasive species is a major threat to waterway biodiversity, aggressively outcompeting native fish and spreading rapidly to dominate environments.



## CARP\*

Originally imported as a game fish, Carp are a major environmental threat as their feeding habits greatly degrade water quality.

### \*DISPOSAL REQUIREMENTS

Tilapia and Carp are among restricted noxious fish that must be humanely killed and disposed of responsibly, away from the water body. Do not return to the water, dead or alive, or use these fish as bait.

# PROTECTED FISH SPECIES

You may encounter these threatened species in Ipswich waterways. Make sure to safely return them to the water.

## QUEENSLAND LUNGFISH *Neoceratodus forsteri*

This vulnerable species reaches up to 1.5m in length and over 30kg. It is a unique species, known as a 'living fossil', and relies on deep permanent waterways and dense aquatic vegetation.



## MARY RIVER COD *Maccullochella mariensis*

Cod became locally extinct in Ipswich's waterways 100 years ago due to overfishing. Recent restocking efforts, using the closely-related endangered Mary River Cod, are slowly bringing this apex predator back into Ipswich's river systems.





Ipswich City Council respectfully acknowledges the Traditional Owners as custodians of the land and waters we share. We pay our respects to their Elders past, present and emerging, as the keepers of the traditions, customs, cultures and stories of proud peoples.



ENJOYED AN EVENT?  
**LET US KNOW!**



Ipswich City Council  
PO Box 191, Ipswich QLD 4305, Australia  
Phone (07) 3810 6666  
[council@ipswich.qld.gov.au](mailto:council@ipswich.qld.gov.au)  
[ipswich.qld.gov.au](http://ipswich.qld.gov.au)

*Recycle me  
when you're done!*

Put me in your yellow lid recycling bin.

