


COMMUNITY REFERENCE GROUP MINUTES			
	Meeting	Growth Management Community Reference Group	
	Date	19 August 2019	Time 6 - 8pm
	Location	Civic Centre	
List of Council Attendees (P = Present, A = Apology, NA = Not in attendance)			
P	Greg Chemello - Interim Administrator (Convenor)		
P	Nick Hughes - A/Executive Officer, Office of the Interim Administrator		
P	Brett Davey - A/General Manager, Planning and Regulatory Services		
P	Tony Dileo - Manager Infrastructure Strategy		
P	Community Engagement Team Member (Amy MacMahon)		
Community Reference Group Attendees (P = Present, A = Apology, NA = Not in attendance)			
P	Rebecca Andlèmac	P	Kirsty O'Brien
P	Shirley Baker	P	James Pinnell
P	Shelley Elshaw	P	Deborah Pye
P	Craig Harte	P	Visha Uchronska
P	Cheryl Hasted	P	Judith Vink
P	George Hatchman		Susan McMahon (Withdrawn)
P	Olaf Heeremans	NA	Grace Muriuki
P	Kathryn Just	NA	Douglas Russell
P	Bruce Leslie	NA	Nicole Sherlock
P	Ursula Monsiegnur		

1. CONVENOR'S OFFICIAL WELCOME

Greg Chemello, Interim Administrator, welcomed the members to the meeting and delivered an Acknowledgement of Country.

Mr Chemello provided feedback to the members regarding the results of the Memorabilia Survey which was distributed to members on 14 August 2019 and noted that Council is not in a position to make a determination about what to do with these items at the moment as there are ongoing investigations. Accordingly, in the meantime, the memorabilia items will be stored by Council until such time as a decision is able to be made about next steps.

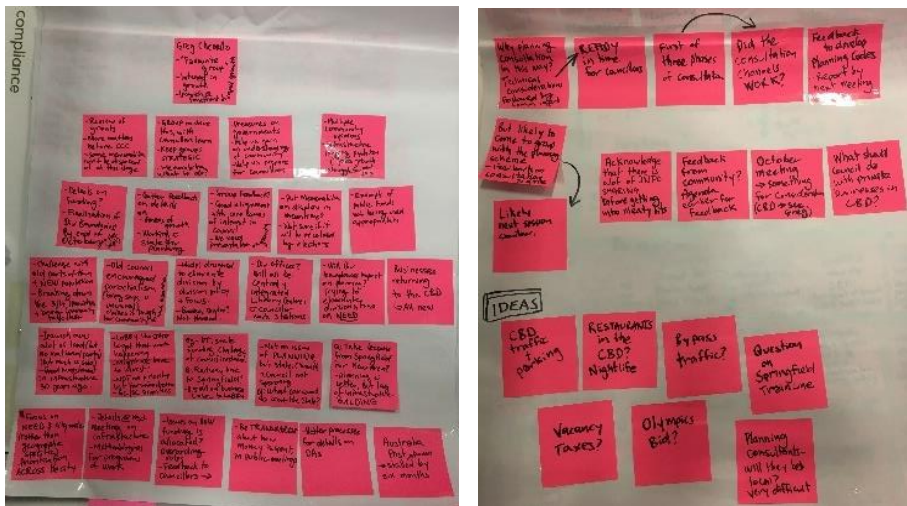
Mr Chemello also reiterated that the goal of the community reference groups is to work strategically, noting that the community reference groups are being asked to help council gain an understanding of the community, and help up prepare for the incoming councillors. Specific to the Growth Management Community Reference Group, Mr Chemello notes that the key priorities identified so far by the members have good alignment with core issues of interest to council.

Mr Chemello invited members to ask other questions about Council, and the following was noted/discussed:

- The group requested feedback on the processes of working with state government planning and also requested a presentation on areas of growth.
- It was noted that infrastructure is lagging behind population and jobs growth. This is likely to be a struggle for the next 30 years. Ongoing pressures on governments to keep up.
- Discussion regarding divisional boundaries. Finalisation of divisional boundaries likely to occur by the end of October (maybe September). The group would like details on funding arrangements that will exist with the new divisional boundaries. This model is designed to eliminate division-by-division policy. Council

offices will be located centrally. Integrated library service centres will have Councillor work stations. Question regarding the impact that the divisional boundaries will have on planning? The goal is to try to eliminate divisions, and focus on need. Overarching rules on how funding is allocated, with feedback to Councillors: be transparent about how money is spent, and make decisions clearly in public meetings.

- One member requested better processes for the ways in which details on DAs are shared with neighbouring residents.
- Challenges exist between older parts of town and the newer populations. There is a need to break down the 3 or 4 'Ipswiches', and bring the community together. Group reflected on the ways in which the old council encouraged parochialism, which makes it tough for the community to work together.
- New businesses are returning to the CBD. Focusing on need and city-wide priorities, and prioritisation across the city (rather than geographic specific).
- Ipswich owns a lot of land (but no national parks). There was good investment in public infrastructure 30 years ago. For new infrastructure, there is a need to lobby the state to get that work happening. Where projects are not on the list of state priorities (e.g. Gold Coast/Sunshine Coast), there might be a need for council to invest? For example, public transport is state-funded, and there are challenges for council to invest. The lack of infrastructure is less an issue of planning, and more about Commonwealth, state and council investment. Question regarding what council can do without state support.
- Question regarding Australia Post: some discussion and lobbying seems to have delayed the move by six months.
- Discussion regarding planning scheme consultation. Why has planning consultation happened in this way? The technical considerations are laid out first, followed by community input. This feedback will feed into the development of planning codes. An interim report will be ready by next meeting. This is the first of three phases of consultation. Hoping to have parts of this ready in time for the incoming councillors. Facilitator noted that feedback on whether the consultation channels worked is welcomed.



To view the full size images, see below at 8.

2. GROUP CHECK-IN

All Community Reference Group members were asked to answer the question: *Since the last meeting, what is one thing you have discussed in your networks about Council or the CRGs?*

Responses included (in no particular order):

1. Upcoming Elections
 - Anxiety around incoming Councillors
 - Short time til the election, and concern around attracting good candidates.

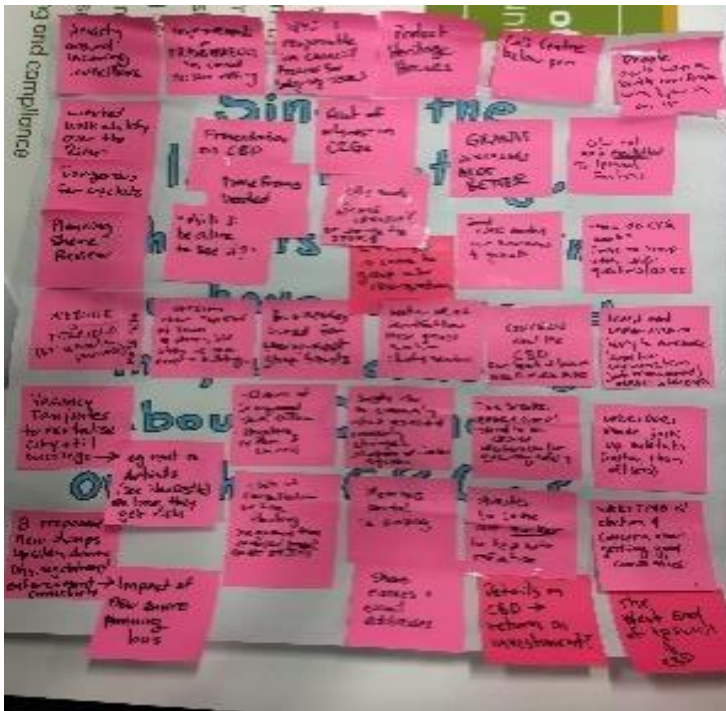
2. CBD Re-development
 - Limited walkability over the river, between Riverlink and the CBD, as connecting foot bridge is closed at night-time. Connection over the David Trumpy bridge is dangerous for cyclists.
 - Poor presentation of the CBD. Good CBD needed for businesses and growth.
 - Timeframes on the CBD redevelopment needed – “Will I be alive to see it?”
 - Concern around the Top End of Town – why have a new 5 storey building when we have empty buildings and shop fronts?
 - Businesses should be fined for poorly-kept shop fronts.
 - Concern around the CBD, our heart of Ipswich. More information from the council needed.
 - Vacancy tax/rates to revitalise the city and fill empty buildings – e.g., rent to artists, see Newcastle as an example. While landowners get rich, we lose.
 - Ipswich CBD should be the ‘West End’ of Ipswich.
 - Active Transport (walking and cycling) is important for the CBD re-development. Store owners should be asked to not block pathways with A frames, and cars should not block bike lanes.
 - Details sought on the CBD redevelopment – return on investment?

3. Planning, Marketing and Development
 - Does the city need a name change? ‘Bremer’ suggested as a possible alternative. This could be a way to unite the various sections of Ipswich. Or do we need to change the story?
 - Ipswich as a city is not well marketed, e.g., Ipswich Festival poorly marketed.
 - Planning Scheme review
 - Lack of consultation on neighbourhood tree planting – example from Flinders View, where without consultation, people removed the trees.
 - Protection for heritage houses. It was asked if funding could be provided to owners for upkeep of heritage houses?
 - Some people don’t want a birth certificate with ‘Ipswich’ on it, others are proud to have Ipswich on their birth certificates – most feel there is a need to improve the image of the city
 - Eight proposed new dumps. Concern around the sites, DA’s, vegetation, vegetation connectivity, clearing and enforcement. Concern around the impact on new environmental planning laws.

4. Council interface with the Community
 - Council website is very poor, while the QT is behind a paywall. Easy access to council/Ipswich info is needed.
 - Council call centre is below par
 - Still some concern around WHO in council is responsible for responding to lodged issues?
 - The community grants process has gotten a lot better
 - Improvements in transparency in council decision-making have been noted
 - Concern regarding the closure of Community Offices, particularly those in Goodna and Collingwood Park, with some community members now having to travel elsewhere.

5. Feedback on CRGs

- A member’s portal for the CRGs will be developed. This will sit within the new digital engagement platform that is being developed.
- Minutes need to come out faster, to help with discussion and reflection.
- A lot of interest in the CRGs
- CRGs need to be more clearly utilised – the ICC should come to group with clear questions for the CRG members to consider. Feeling ‘all at sea’ about how the CRGs work – clarity needed.
- Lack of clarity and transparency around investment being done with the environment levy, to purchase land for conservation. Invest in urban corridors?



To view the full size image, see below at 8.

3. ACTIONS FROM LAST MEETING

The Facilitator noted that Council had listened to the feedback of members at the last meeting about the frequency of meetings and correspondence between meetings and, as a result, had increased the frequency of meetings to approximately every two (2) months. Further, Council would shortly implement a mechanism/forum by which correspondence and discussion between meetings can occur.

A short discussion regarding confidentiality occurred and, regarding meeting agendas, the Facilitator noted that the process for agenda items will occur via email between meetings.

4. GROWTH AND INFRASTRUCTURE PROCESSES

Feedback was gathered from the group throughout the meeting regarding information and details that the group would like discussed in more detail at following meetings. Note that this discussion is documented below under point six and point seven.

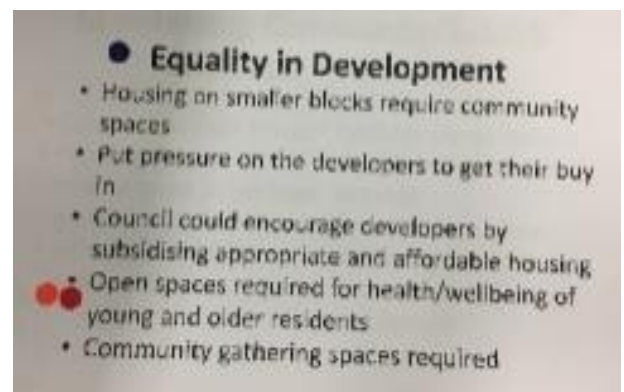
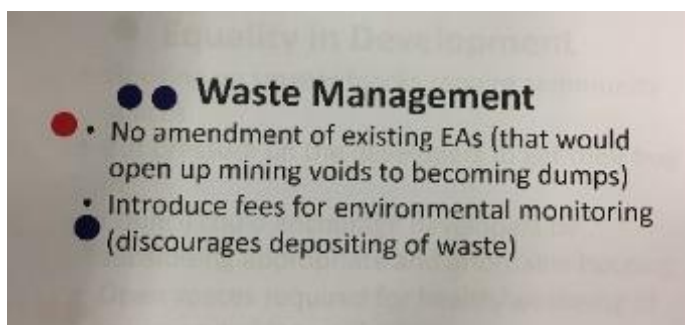
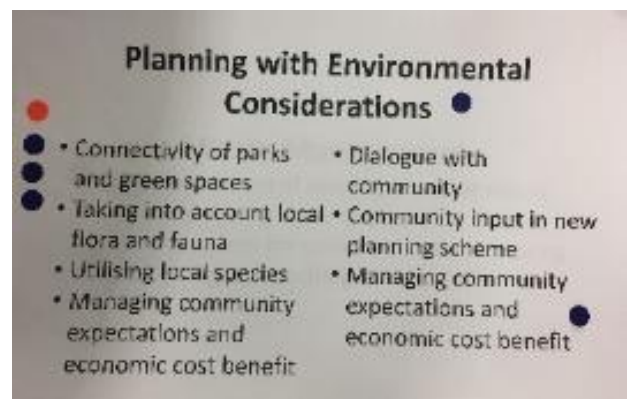
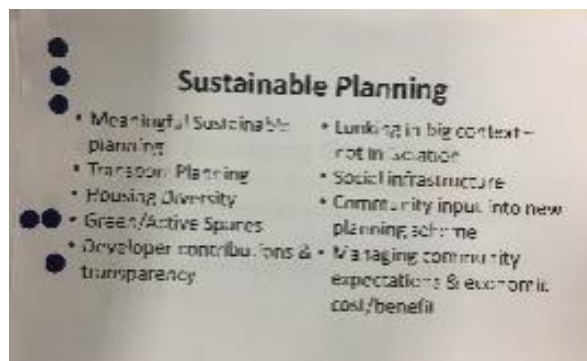
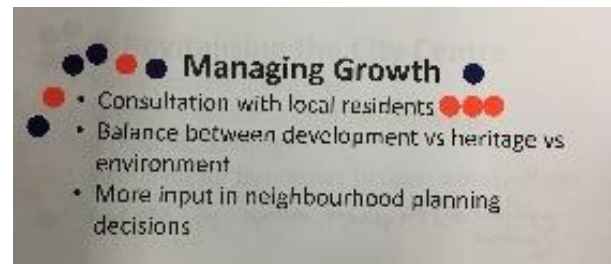
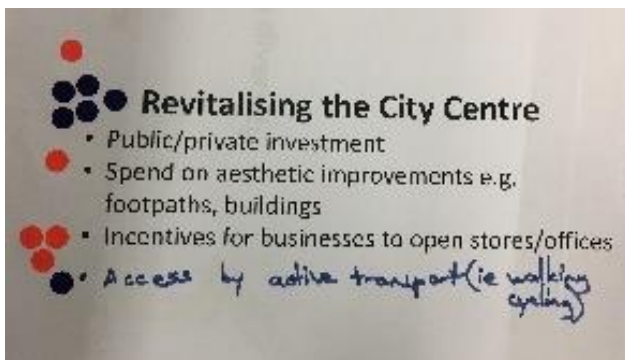
5. PLANNING SCHEME CONSULTATION

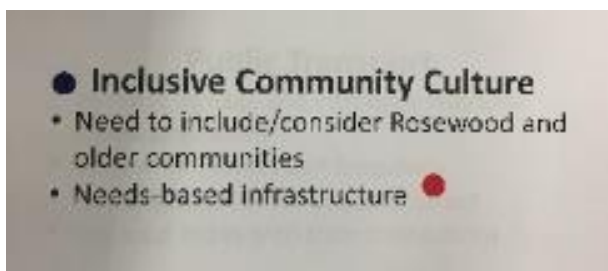
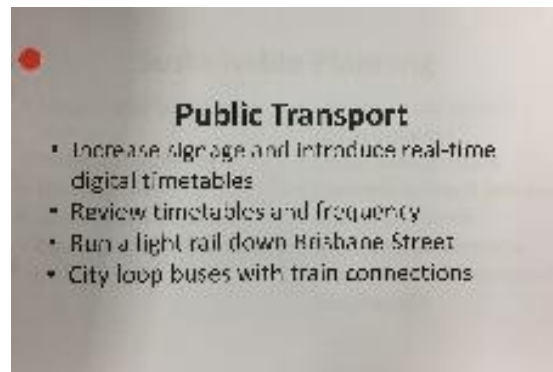
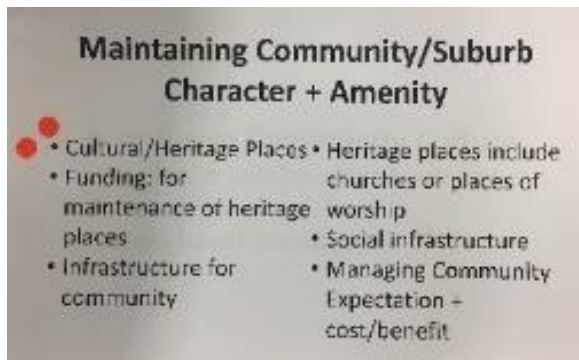
The Facilitator and Convenor provided a brief overview of the planning scheme consultation process to date, as documented in point one. Further details regarding this consultation process will be provided at following meetings.

6. KEY PRIORITIES FOR THE CITY OF IPSWICH

The Facilitator noted the various priorities identified by members at the last meeting and posted these on the wall. Members were then each given three sticky dots, to identify their top priorities out of those mentioned at the last meeting. The number next to each of the following topics indicates the number of sticky dots this topic received by members:

- Revitalising the City Centre (11)
- Managing Growth (10)
- Sustainable Planning (6)
- Planning with Environmental Considerations (6)
- Waste Management (4)
- Equality in Development (3)
- Maintaining Community/Suburb Character + Amenity (2)
- Inclusive Community Culture (2)
- Public Transport (1)





To view the full size images, see below at 8.

7. CLOSING DISCUSSION

The Facilitator noted and acknowledged that there is a lot of information sharing that needs to occur before the group will be able to get to the ‘meaty’ discussions.

Members noted that they would like to receive the agenda earlier, to allow the group to gather feedback from the community.

The October meeting will bring a key question(s) to the group for consideration, possibly on the CBD. For example, what should council do with private businesses in the CBD? Ideas from members included:

- Issues with CBD traffic and parking. Could thru-traffic be bypassed from the city?
- How to bring restaurants and evening-life back to the CBD
- Question regarding the Springfield train line
- Option for vacancy rates/taxes?
- Olympic bid for SEQ.
- Will the planning consultations engaged to help with planning scheme be local? As much as possible, but not always possible.

The following points were noted for clarification/details at future meetings:

- Details on infrastructure planning, and methodologies for programs of work.
- Feedback on processes of working with state government planning.
- Presentation on areas of growth.
- Details on funding arrangements that will exist with the new divisional boundaries.
- Question regarding the impact that the divisional boundaries will have on planning.
- Presentation in CBD planning.
- Planning scheme consultation to-date.

Meeting closed at 8:25pm. Date of next meeting 23 October 2019.

8. IMAGES

compliance

Greg Chemello
 - "Favourite group"
 - Interest in growth
 - Ipswich @ forefront of growth

- Review of grants
 - More matters before CCC
 - Some memorabilia can't be disposed of at this stage

- Group to drive this, with Councillors learn
 - Keep groups STRATEGIC
 - Memorabilia what to do?

- Pressures on governments
 - Help us gain an understanding of community
 - Help us prepare for Councillors

- Multiple Community opinions
 - Infrastructure
 - Housing, population
 - Jobs growth
 - Next struggle for 30%

- Details on Funding?
 - Finalisation of Div Boundaries? By end of Oct to be finalised

- Gather feedback on details on
 - Areas of growth
 - Working on state plan planning

- Group feedback?
 - Good alignment with core issues of interest to Council
 - We need presentation on growth

- Put Memorabilia on display in meantime?
 - Not sure if it will be resolved by elections

- Example of public funds not being used appropriately

- Challenge with old parts of town + NEW population
 - Breaking down the 3/4 Ipswich + bring community together

- Old Council encouraged parochialism (Greg says v unusual)
 - Makes it tough for community

- Model designed to eliminate division by division policy + Focus.
 - Goodna Centre? Not planned...

- Div offices? Will all be central + integrated Library Centres + Councillor work stations

- Will Div boundaries impact on planning? Trying to eliminate divisions, focus on NEED

Businesses returning to the CBD
 ↳ All new

- Ipswich owns a lot of land (but no national party) (but much is sold)
 - Good investment in infrastructure 50 years ago.

- LOBBY the STATE to get that work happening
 - might we have to invest?
 - NOT on priority list for infrastructure
 - GCISC priorities

Eg - PT, state funding, challenge of council investment.
 Q: Railway line to Springfield?
 - 0.5M on business case to LOBBY

- Not an issue of PLANNING but state, (wealth) + Council not spending
 Q: What can council do to wait the state?

Q: Take lessons from Springfield for New area?
 - planning is better, but lag of infrastructure BUILDING

Q: Focus on NEED of city-wide (rather than geographic specific)
 - Prioritisation ACROSS the city

- Details @ Next Meeting on infrastructure
 - Methodologies for programs of work

- Issues on How funding is allocated?
 - Overarching rules
 - Feedback to Councillors →

- Be TRANSPARENT about how money is spent, in public meetings

- Better processes for details on DAS

Australia Post awarded
 → stalled by six months

Why planning
consultation
in this way?
Technical
consideration
followed by
comm input

READY
in time
for councillors

First of
three phases
of consultation

Did the
consultation
channels
WORK?

Feedback
to develop
Planning Codes
- Report by
next meeting

But likely to
come to grasp
with the planning
scheme
- Feedback on
consultation
to date

Likely
next session
similar.

Acknowledge
that there is
a lot of INFO
SHARING
before getting
into meaty bits

Feedback
from
community?
Agenda
earlier for
feedback

October
meeting
→ something
for consideration
(CBD → see
Greg)

What should
Council do
with private
businesses in
CBD?

IDEAS

CBD
traffic
&
parking

RESTAURANTS
in the
CBD?
Nightlife

Bypass
traffic?

Question
on
Springfield
TrainLine

Vacancy
Taxes?

Olympics
Bid?

Planning
consultants-
will they be
local?
Very difficult



Revitalising the City Centre

- Public/private investment
- Spend on aesthetic improvements e.g. footpaths, buildings
- Incentives for businesses to open stores/offices
- Access by active transport (ie walking cycling)

Revitalising the City Centre

Managing Growth

- Consultation with local residents
- Balance between development vs heritage vs environment
- More input in neighbourhood planning decisions

Sustainable Planning

- Meaningful Sustainable planning
- Transport Planning
- Housing Diversity
- Green/Active Spaces
- Developer contributions & transparency
- Looking in big context – not in isolation
- Social infrastructure
- Community input into new planning scheme
- Managing community expectations & economic cost/benefit

Planning with Environmental Considerations

- Connectivity of parks and green spaces
- Taking into account local flora and fauna
- Utilising local species
- Managing community expectations and economic cost benefit
- Dialogue with community
- Community input in new planning scheme
- Managing community expectations and economic cost benefit

● ● Waste Management

- • No amendment of existing EAs (that would open up mining voids to becoming dumps)
- • Introduce fees for environmental monitoring (discourages depositing of waste)

● Equality in Development

- • Housing on smaller blocks require community spaces
- • Put pressure on the developers to get their buy in
- • Council could encourage developers by subsidising appropriate and affordable housing
- • Open spaces required for health/wellbeing of young and older residents
- • Community gathering spaces required

Maintaining Community/Suburb Character + Amenity

- • Cultural/Heritage Places • Heritage places include
- • Funding: for maintenance of heritage places • churches or places of worship
- • Infrastructure for community • Social infrastructure
- • Managing Community Expectation + cost/benefit

● **Inclusive Community Culture**

- Need to include/consider Rosewood and older communities
- Needs-based infrastructure ●
- City loop buses with train connections



Public Transport

- Increase signage and introduce real-time digital timetables
- Review timetables and frequency
- Run a light rail down Brisbane Street
- City loop buses with train connections