

Opportunities and Actions

The Deebing Creek Corridor was split into sub-corridor areas reflecting how its characteristics change from an eroded channel with large urban development planned, to a more stable channel downstream with existing residential neighbourhoods. On-ground opportunities and key actions were identified within each of these sub-corridor areas. These are documented in the Deebing Creek Corridor Plan.

Supporting graphics were developed to provide additional detail on three key areas which will be critical in the future transformation of the Deebing Creek Corridor.

Deebing Creek Bikeway

The Deebing Creek Corridor plan is the first of its type to include strategic planning for a new bikeway co-located within the corridor. The Deebing Creek Bikeway is identified in the iGO Active Transport Action Plan as a principal cycle route which follows large sections of the creek corridor, to connect the Ipswich CBD with the future development in the Ripley Valley Priority Development Area.

The bikeway is proposed to be a joint investment between the Department of Transport and Main Roads (upon funding application) and Council. It will be a high quality north-south active transport corridor, supported by other principal, secondary and local cycle links and mid-trip facilities such as shading, lighting, surveillance cameras and seating.

An indicative alignment for the bikeway and potential alternative routes are presented in the Corridor Plan. This will be investigated further in future detailed assessments.

Implementation and Next Steps

The Corridor Plan includes an implementation and delivery plan which lists actions and aligns them with corridor objectives. The implementation and delivery plan also identifies the scale of the project and the stakeholders involved. This is used by Council to help identify and prioritise key actions as a priority for the Deebing Creek Corridor.

Key actions include:

- An investigation to identify the scope of works required to address erosion and unstable banks in the upper mid corridor area.
- A collaboration across Council departments to ensure the many projects delivered in the lower mid corridor area are designed and delivered with future infrastructure requirements in-mind, to reduce re-works.
- The preparation of a detailed plan for the Deebing Creek Bikeway to consider its natural values and to provide connections to key destinations which integrates with existing and proposed transport infrastructure.

The document will also be used by Council to monitor and evaluate the implementation of the Corridor Plan, to ensure that all works undertaken across the catchment help to deliver the corridor vision.



Ipswich City Council
45 Roderick Street
PO Box 191, Ipswich
QLD 4305, Australia
Phone (07) 3810 6666
Fax (07) 3810 6731
council@ipswich.qld.gov.au
ipswich.qld.gov.au

Cover Image
Reflections in Deebing Creek by J McGrath
Ipswich Enviroplan Photo Competition



The Deebing Creek corridor is a valued natural system. It supports the sustainable movement of people and connects the community to key centres, open spaces, the natural environment and cultural history of Ipswich.

Deebing Creek

The Deebing Creek catchment covers an area of 26km² and is located less than 5km south of the central business district (CBD) of Ipswich. The creek originates in the Grampian Hills and flows to meet the freshwater section of the Lower Brisbane River in West Ipswich.

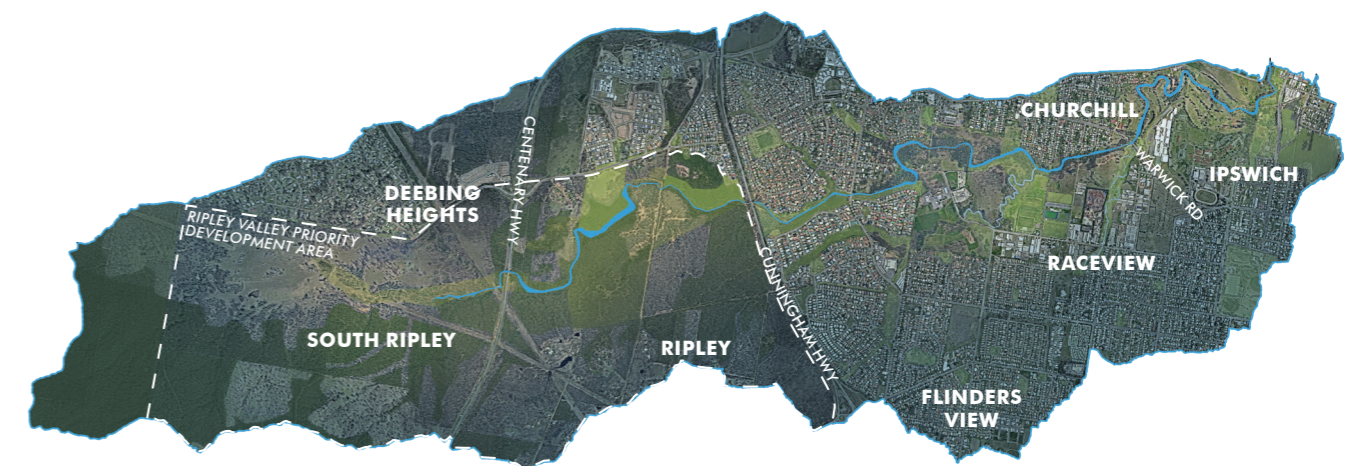
The lower reaches of the catchment are extensively developed and significant urban development is planned upstream of the Cunningham Highway, as part of the Ripley Valley Priority Development Area. Holistic planning of the catchment will see the Deebing Creek corridor emerge as a key green link and active transport corridor between the new development areas and the CBD.

There are patches of vegetation in the corridor which contain important flora and fauna, but the waterway channel itself in many sections (especially south of the Cunningham Highway) is characterised by

significant erosion and sedimentation. Re-building ecological resilience is essential to ensure the corridor can deliver its many services into the future.

The Corridor Plan

The Deebing Creek Corridor Plan presents a holistic, strategic plan which maps the many benefits of and activities planned across the catchment. This includes cultural and heritage benefits, planned urban development, transport infrastructure, waterway improvement, vegetation management and open space and recreation facilities. The mapping of different information layers allows identification of actions, which will provide multiple solutions to address competing outcomes in a collaborative manner. The Plan serves as a multifunctional resource to consolidate waterway health and network planning, with a detailed analysis of the corridors existing condition and future requirements.



Join us online:



ipswich.qld.gov.au



Drawing Key

- Catchment boundary
- Waterway
- Cadastre (refer ICC mapping)
- Existing parks and recreation
- Future parks and recreation
- Conservation
- Land for Wildlife
- Endangered remnant vegetation
- Existing detention basins
- Open drains
- Indigenous heritage
- Other heritage
- Ripley Valley PDA
- Future public passenger transport facility
- Proposed mid-trip facility
- Ipswich to Springfield future public passenger transport corridor
- Future proposed road
- Deebling Creek bikeway indicative alignment
- Principal cycle route
- Secondary cycle route
- Indicative secondary cycle route
- Local cycle route
- Indicative local cycle route
- Waterway stabilisation investigation area
- Ecological connection works (revegetation works and fauna connections)

