

Celebrating 25 years of Enviroplan

2021 PROGRAM – Events | Activities | Promotions



WHAT IS ENVIROPLAN?

Ipswich Enviroplan was launched in 1996 by Ipswich City Council.

Enviroplan was created as a proactive measure to preserve our key conservation areas ahead of Ipswich's population boom. This forward-thinking initiative was a leading concept and continues to stand the test of time.

Funding for this important environmental and conservation initiative has been made possible by a levy paid by ratepayers within the Ipswich Local Government Area. The money has been put to good use and the community is seeing tangible benefits on public, private, urban and rural land.

By committing to a plan, council and the community have been able to take positive action on a number of fronts, and deliver specific environmental benefits for current and future generations.

There are four pillars that form the basis for successful nature conservation within Ipswich:

- **PLANNING:** delivery of city-wide conservation planning, management and research activities that include ecological studies, mapping and ecosystem recovery development
- **ACQUISITION:** identification and prioritisation of valuable conservation areas which council can consider for voluntary purchase and consolidation within estates and reserves
- **MANAGEMENT:** ensuring land secured under Enviroplan is carefully managed for conservation and nature recreation values such walking trails and habitat restoration
- **PARTNERSHIPS:** recognising and supporting the critical role of the community and landholders in conservation and environmental management.

Each Ipswich household pays \$45 per year to the Ipswich Enviroplan on their rates. On average:

- \$13.95 helps buy Ipswich land for conservation
- \$4.50 goes towards supporting community initiatives and education
- \$7.65 aids citywide conservation planning and research
- \$18.90 pays for managing and improving Ipswich's natural areas

For more information visit ipswich.qld.gov.au/enviroplan

PROGRAM SNAPSHOT

A season of events and activities will showcase Ipswich's environment and conservation achievements.

You will have fascinating insight to Ipswich's natural beauty and be inspired with actions you can take into your everyday life.

The season is a mix of programs directly funded by Enviroplan, and other council events and activities providing strong environment and sustainability outcomes for the City of Ipswich.

5 June	World Environment Day
	Enviro Awards nominations open
19 June	Great Restorations – Habitat Gardens workshop
28 June – 5 July	Kids Go Wild activities
1 July	Launch of Landholder Conservation Partnerships Program
17 July	Launch of Peaks to Points Festival
8-18 July	Refraction – SPARK Ipswich
18 July	Little Day Out – SPARK Ipswich
24 July	Great Restorations – Pine Mountain open property
24 July	Nature at Night
31 July	Mount Grandchester Experience
1 August	National Tree Day community planting
12 August	Great Restorations – Little Liverpool Range Initiative
22 August	Nature at Night
28 August	EnviroForum

IPSWICH CONSERVATION ESTATES AND RESERVES



QuestaGame App

Earn points with photos of the flora and fauna you see and help identify species. Download free from your app store.

WHITE ROCK – SPRING MOUNTAIN CONSERVATION ESTATE

A popular estate for nature-based recreation, including the iconic White Rock which has cultural significance to the Traditional Owners.

FLINDERS – GOOLMAN CONSERVATION ESTATE

Home to Ipswich's faunal emblem, the Brush-tailed Rock Wallaby. Also offers bush camping and Ipswich's most challenging hike.

PURGA NATURE RESERVE

This reserve contains the largest protected area of endangered Swamp Tea-tree forest in the world.

DENMARK HILL CONSERVATION RESERVE

This reserve has remnants of a strong mining history and stunning views from the water tower.

HAIG STREET QUARRY CONSERVATION RESERVE

A birdwatching hotspot, including family-friendly walks through bushland and around a pond.

HILLVIEW DRIVE RESERVE

A popular trail for mountain bike riders and bushwalkers, and part of a bioregional corridor.

RIC NATTRASS ENVIRONMENTAL PARK

This park is next to Woogaroo Creek and is a connector between other conservation areas.





Ipswich has 12 conservation estates and reserves that cover more than **6,700 hectares**.



Over 23 years more than **\$11.9 million** has been invested through Enviroplan to purchase a total of 5,877 hectares of land for nature conservation.



Ipswich does not have a National Park, so council's Enviroplan-funded conservation estates are essential for the **protection** of important natural areas.



There are more than **1,650 recorded species** of native plants and animals and Ipswich, including numerous rare and threatened species, and 38 different regional ecosystems.

IPSWICH PTEROPUS CONSERVATION PARK

Commonly known as Woodend Nature Centre, it is home for a largely transient flying fox colony.

MOUNT GRANDCHESTER CONSERVATION ESTATE

Closed to public access

This estate protects the largest population of threatened Baileys cyprus pine.

MOUNT BEAU BRUMMELL CONSERVATION PARK

Closed to public access

This estate forms part of the ecologically significant Little Liverpool Range.

KHOLO ENVIROPLAN RESERVE

Closed to public access

This reserve protects a rare dry vine forest ecosystem.

STIRLING ROAD RESERVE

Closed to public access

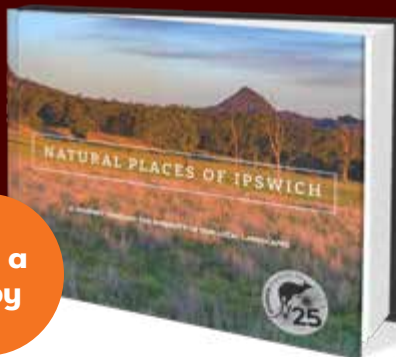
This reserve is an important remnant of the 'Rosewood Scrub'.

NATURAL PLACES OF IPSWICH

The beauty and majesty of Ipswich's conservation areas has been captured in a special coffee table book to mark 25 years of the Ipswich Enviroplan.

Natural Places of Ipswich: A journey through the diversity of our local landscapes showcases Ipswich's conservation estates with incredible images and entries that detail the history, flora and fauna, and attractions that can be found at each site.

Available to purchase at the Queens Park Visitor Information Centre and Ipswich Art Gallery.



Buy a copy

ENVIRO AWARDS

ENTRIES OPEN SATURDAY 5 JUNE
ENTRIES CLOSE SATURDAY 31 JULY

Ipswich Enviro Awards recognise those in the community who have contributed to improve environmental and sustainability outcomes for the city.

ENVIRONMENTAL HERO AWARD

An individual who has taken action to improve or enhance Ipswich's natural environment.

SUSTAINABLE LEADERSHIP AWARD

An individual, organisation or group who has actioned sustainability solutions to reduce the Ipswich community's environmental footprint, and/or is taking a lead in Ipswich sustainability education and advocacy work.

YOUNG ENVIRO CHAMPION AWARD

An individual aged 25 years or younger who has made a contribution to the protection of Ipswich's environment or has commitment to an Ipswich sustainability initiative.

ENVIRO ORGANISATION AWARD

An organisation that has made a contribution to the protection of the environment or has committed to an Ipswich sustainability initiative.



NOMINATE ONLINE ipswich.smartygrants.com.au

Find all of the nomination criteria online, as well as the terms and conditions.

It's an easy process – simply fill in the sections as prompted by the form. You can save your progress and return to the form as many times as you need.

Winners will be announced at EnviroForum on Saturday 28 August.

ENVIROFORUM

SATURDAY 28 AUGUST
TICKETED EVENT

Held annually, EnviroForum showcases initiatives and innovative surrounding the sustainable management of natural resources.

It's an opportunity to hear from expert guest speakers as they share valuable insight to important environmental topics facing Ipswich and beyond.

In celebration of 25 years of conservation achievements through Enviroplan, the 2021 EnviroForum will be an open-air event at Hardings Paddock with the stunning Flinders – Goolman Conservation Estate as its backdrop.



BUY TICKETS

ipswich.qld.gov.au/enviroforum

An exciting range of topics and speakers will be presenting in 2021.

See the full program of guest speakers and ticket details online from July 2021.

Number are strictly limited – so be sure to secure your ticket early!

KIDS GO WILD

28 JUNE – 5 JULY

FREE EVENT, BOOKINGS ESSENTIAL

Council's Kids Go Wild program is filled with a range of fun activities that encourage kids to get involved in our local environment and learn about ways to become more sustainable.



COMING IN THE JUNE–JULY SCHOOL HOLIDAYS

NATURE PHOTOGRAPHY WORKSHOPS

Presented by Bazil Grumble. Learn some new tips and tricks to take fun shots out in nature using a smartphone or tablet.

THE BUZZ ABOUT BEES

Presented by Wildlings Forest School. Have fun learning 'bee speak' and using scent to find your way around. Build a bee hotel for your backyard.

UNDERWATER INVESTIGATORS

Presented by Wildlings Forest School. A special on-site activity at Small Creek explores the impact of single-use plastics on our waterways and animals such as platypus.

WICKED WORMS AND ORGANIC FOOD GARDENING

Presented by Natura Education. Learn how to create compost at home with everyday items. Take home a mini seed item to get started!

BRIC A BRAC ART ATTACK

Presented by Natura Education. Use recycled materials to create artworks, and learning what we can and can't recycle.

BOOK A FREE SPOT – ipswich.qld.gov.au/enviroed

See the 'School Holidays' page for details on all the activities being offered in June–July.

SPARK IPSWICH

8 – 18 JULY

FREE AND TICKETED EVENTS

SPARK Ipswich (the reimagined Ipswich Festival) is an 11-day city-wide event celebrating the people, places, arts and culture of Ipswich.

The program includes major highlights with environmental and sustainability themes.

REFRACTION

FREE EVENT, 8-18 JULY 2021

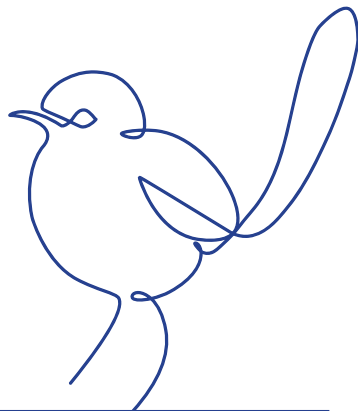
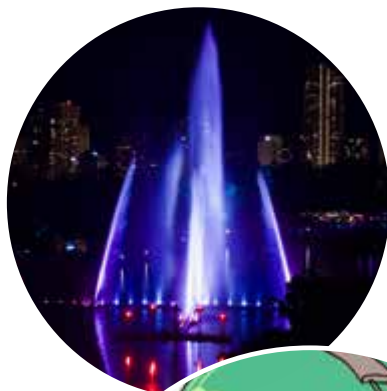
Held on the Bremer River, Refraction is an art, light and water installation that is defined by the refraction of light through liquid to create an ever changing kaleidoscope of colour.

With a range of free viewing points including Riverlink Shopping Centre, Riverheart boardwalk, David Trumpy Bridge and Bradfield Bridge, this nightly COVID Safe event will ignite interest and encourage the Ipswich community and visitors to engage with the Bremer River.

LITTLE DAY OUT

TICKETED EVENT, 18 JULY 2021

Presented by Ripley Town Centre, Little Day Out is the region's first contemporary music and arts festival designed for the young and young at heart. High-quality music and arts experiences and a host of activities are planned with a focus on fun and sustainability.



BE INVOLVED – Follow [f](#) [@](#) @IpswichFestivals

Follow @IpswichFestivals on Facebook and Instagram for the latest updates and to be the first to know when tickets are released.

PEAKS TO POINTS FESTIVAL

17 JULY – 1 AUGUST
FREE AND TICKETED EVENTS



Peaks to Points Festival is a biennial event that celebrates the local governments and their communities' efforts to care for the creek catchments along the southern side of the Brisbane River.

The 16-day celebration includes close to 40 family friendly events across Brisbane, Ipswich, Redlands and Logan.

Ipswich City Council will host special events as part of the Peaks to Points Festival.

SEE THE PROGRAM

Peakstopoints.com.au

Details of events for the regional program can be found online. A range of free or low-cost activities will be held by councils and other organisations.

A highlight is the free family day at Oxley Creek Common with live entertainment, children's activities, informative stalls and food and drink options.

GREAT RESTORATIONS – PINE MOUNTAIN FREE EVENT | BOOKINGS ESSENTIAL | 24 JULY

This Pine Mountain property is simply inspirational – owners undertaking years of work to turn weed-infested paddocks into a habitat haven for species such as the Black-breasted Button Quail.

See this incredible restoration project yourself and the special lowland dry rainforest it inhabits.

NATURE AT NIGHT TICKETED EVENT | 24 JULY

Join us on a walk as the sun sets, and experience nature as it transitions from day to night. Discover the different sights and sounds of the bush after dark; who knows what cool new wildlife we might encounter?

This walk at White Rock – Spring Mountain Conservation Estate will help you see Ipswich's most popular nature-based recreation destination in a new light!



MOUNT GRANDCHESTER EXPERIENCE **TICKETED EVENT | 31 JULY**

This is an exclusive chance to go behind the scenes at a conservation area normally closed to public access.

Hike to the peak of Mount Grandchester and enjoy scenic views of the surrounding landscape. Learn about the natural features that make this area so important to regional conservation, and discover what is being done to ensure it is protected for future generations.

NATIONAL TREE DAY COMMUNITY PLANTING **FREE EVENT | BOOKINGS ESSENTIAL | 1 AUGUST**

Join the Garden of Eden Bushcare group as they work to remove weeds and restore the banks of the Bremer River with native plants.

You can help the volunteers with their planting activities on the day. Enjoy some family time in the scenic Cribb Park, North Ipswich, and learn about topics related to our waterway health.

GREAT RESTORATIONS

A series of workshops with practical tips and techniques are on offer to inspire your own property improvements – whether you have a small urban backyard or an expansive rural property.



GREAT RESTORATIONS - HABITAT GARDENS **FREE EVENT | BOOKINGS ESSENTIAL | 19 JUNE**

Join council's gardening expert James Hilyard on an exploration of how we can use simple techniques to build a garden's resilience to drought through a technique called xeriscaping. This session will particularly benefit suburban residents keen to use native plants.

GREAT RESTORATIONS - PINE MOUNTAIN **FREE EVENT | BOOKINGS ESSENTIAL | 24 JULY**

*Note: Limited to participants aged 12 and over

See a variety of weed control and restoration techniques in action at this inspirational property. Five years into a 10-year vision, explore the transformation of weed-infested paddocks back into lowland dry rainforest, a habitat haven for species such as the Black-breasted Button Quail.

GREAT RESTORATIONS - LITTLE LIVERPOOL RANGE INITIATIVE **FREE EVENT | BOOKINGS ESSENTIAL | 12 AUGUST**

Spicers Hidden Vale is a stunning example of a working property that balances conservation management. See this incredible landscape on Ipswich's western boundary and participate in a special landholder workshop on landscape restoration techniques.

BOOK TICKETS - ipswich.qld.gov.au/enviroplan

If you are interested in future workshops, consider if there is a Landholder Conservation Partnerships Program that may suit your property and environmental goals.

LANDHOLDER CONSERVATION PARTNERSHIPS PROGRAM

Ipswich residents play a crucial role in nature conservation.

A significant amount of important habitat is on private property. Council supports landowners in achieving environmental and conservation outcomes with technical advice and other incentives.



HABITAT GARDENS APPLICATIONS OPEN NOW

An urban partnership designed to help residents with smaller blocks to still make a positive contribution to Ipswich's environment.

LAND FOR WILDLIFE APPLICATIONS OPEN NOW

A regional program for areas more than 1 hectare and landowners with a commitment to protecting vegetation.

BIODIVERSITY CONSERVATION AGREEMENT APPLICATIONS OPEN 1 JULY 2021

Suits properties with agreement areas more than 1 hectare and intact vegetation.

CONSERVATION CORRIDOR AGREEMENT APPLICATIONS OPEN 1 JULY 2021

Suits properties of any size with landowners committed to restoring fragmented landscapes or waterway corridors.

VOLUNTARY CONSERVATION COVENANT APPLICATIONS OPEN 1 JULY 2021

A permanent protection mechanism for intact vegetation, for agreement areas greater than 1ha.

BE A PARTNER – For more information, search for 'Landholder Conservation Partnerships Program' at ipswich.qld.gov.au.

SUBSCRIBE TO ENVIRO UPDATES

The monthly Environment Matters e-newsletter sends the latest news about Ipswich's natural environment and sustainability initiatives straight to your inbox.

You can also pick up a free copy of the 6-monthly Environment Matters Magazine at the Queens Park Environmental Education Centre.



STAY UP TO DATE – ipswich.qld.gov.au/subscribe

ENVIRONMENT AND SUSTAINABILITY GRANTS

This grants program provides assistance for community-led initiatives that contribute to the protection, enhancement and sustainability of Ipswich's environment.

Up to \$2,000 in grant funding is available to not-for-profit groups, schools and childcare centres, or up to \$1,000 for wildlife carers, per application.



APPLY – ipswich.qld.gov.au/grants

There are four rounds of funding each year, in February, April, July and October.

ENVIRONMENTAL VOLUNTEERING

There is something for everyone when it comes to environmental volunteering with Ipswich City Council

- Sharing local information with visitors at the Queens Park Environmental Education Centre
- Planting and maintenance at Bushcare sites across the city
- Feeding, cleaning and other animal care work at the Queens Park Nature Centre

SIGN UP

ipswich.qld.gov.au/volunteering

All available volunteering opportunities are listed together, select what suits your availability and preferences!



EXPERIENCE NATURE GUIDED BUSHWALKS

Council is committed to sharing our knowledge and passion for Ipswich's natural environment. Experience Nature guided tours reveal stories, history and the fascinating life of flora and fauna within our conservation estates.

Regular tours, including moonwalks and school excursions, are organised during the year.



GO ON A TOUR - ipswich.qld.gov.au/experiencenature



Ipswich City Council
PO Box 191, Ipswich QLD 4305, Australia

Phone (07) 3810 6666
council@ipswich.qld.gov.au
ipswich.qld.gov.au

Join us online:



[/IpswichCityCouncil](https://www.facebook.com/IpswichCityCouncil)



[/ipswich-city-council](https://www.linkedin.com/company/ipswich-city-council)



[/IpswichCityCouncilTV](https://www.youtube.com/IpswichCityCouncilTV)

