

Significant Plants and Animals

Purga Nature Reserve provides unique habitat for a diverse range of native flora and fauna.



SWAMP TEA-TREE *Melaleuca irbyana*

This paperbark tree grows up to 8 metres tall. It has cream-coloured 'bottlebrush' style flowers in Spring-Summer.

This species is usually found growing in poorly-draining, heavy clay soils.

Why is it protected?

This ecological community is critically endangered and of national significance.

Purga Nature Reserve is the largest remaining stand of Swamp Tea-tree. The land was acquired through Ipswich Enviroplan in 1997.

Council undertakes revegetation and weed control to restore this species.

Interesting facts

The Swamp Tea-tree is used by Traditional Owners for medicinal purposes.

The antiseptic and anti-inflammatory properties can treat coughs, colds, sore throats, headaches and other ailments.

Swamp Tea-Trees are home to Ghost moth larvae (*Hepialus humuli*) also known as Witchetty grubs.

Traditional Owners call the larvae 'Jebbim' and used it as a staple food.



TONGUE ORCHID *Dockrillia linguiformis*

This Australian native orchid grows on both trees and rocks in nature. It has distinctive fleshy, oval shaped leaves that resemble a tongue.



EMERALD SPOTTED TREE-FROG *Litoria peronii*

The wetlands of Purga are a haven for frogs. This species has a loud repetitive call (like a jackhammer crossed with a machine gun) and green speckles.



BLACK-STRIPED WALLABY *Macropus dorsalis*

This shy species shelters in dense shrubs. It can occur in groups of 20 or more. It can be easily confused with the more common Red-necked Wallaby.

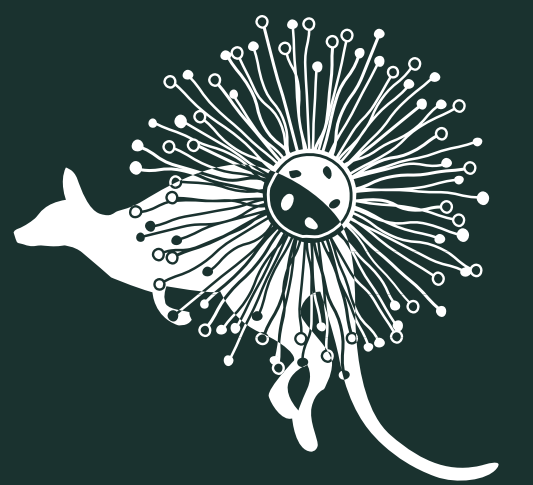


KOALA *Phascolarctus cinereus*

This reserve is important habitat for a koala population. Koalas eat up to 500g of eucalyptus leaves each day.

IPSWICH EMBLEMS

Two local species have been chosen as the flora and fauna emblems of the City of Ipswich.



FAUNAL EMBLEM

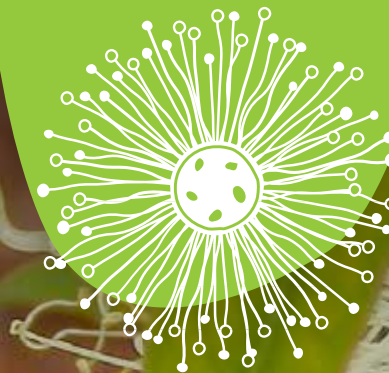


BRUSH-TAILED ROCK WALLABY *Petrogale penicillata*

Once widespread in mountain areas of eastern Australia, this species now only occurs in a few scattered populations.

Through Enviroplan, habitats critical to the Brush-tailed Rock Wallaby's survival are preserved at Flinders-Goolman Conservation Estate.

FLORAL EMBLEM



PLUNKETT MALLEE *Eucalyptus curtisii*

This rare tree only has a few small populations remaining in South-East Queensland.

Through Enviroplan, some of the Plunkett Mallee's remaining populations are being protected in the White Rock - Spring Mountain Conservation Estate.