

Notification of Works

Springfield Parkway Upgrade Springfield

Division 2

INF03219

25 June 2025



STAGE 2

SERVICE RELOCATIONS AND VEGETATION CLEARING SPRINGFIELD PARKWAY

From 7am Monday 7 July through till 5pm Friday 29 August 2025, select vegetation clearing, earthworks, service relocations and drainage network upgrades will occur along Springfield Parkway, Springfield College Drive and Bridgewater Road Roundabout Springfield. It is anticipated these works will take eight weeks to complete, weather permitting.

Construction work will be carried out from Monday to Friday, 7am till 5pm and include:

- Selective vegetation clearing within road and road reserve corridor
- Telecommunications, electrical and sewer services relocations and upgrades
- Preparation for water main works
- Minor earthworks for retaining wall construction and service relocations
- Stormwater drainage network upgrades.

WHAT TO EXPECT?

- Vegetation clearing along the road corridor and road reserve in Springfield College Drive, Bridgewater Road and Springfield Parkway. Council will donate mulch from this clearing to a local school.
- A fauna spotter catcher will be onsite to identify, capture and relocate any wildlife that may be present for the duration.
- Minor earthworks to facilitate service relocations and upgrades.
- Changed traffic conditions including periodic temporary lane closures of Springfield Parkway and Bridgewater Road Roundabout. Access will be available to motorists and pedestrians via traffic control for the duration.

- Temporary footpath closures in Springfield College Drive and near active work areas will occur and alternative pedestrian routes will be signed.
- Traffic control signage, vehicles and controllers to direct traffic.
- Reduced speed limit to 40km/h through work areas.
- Heavy machinery and construction plant to facilitate works.
- Some minor noise and dust associated with these activities. Every effort will be made to minimise these impacts.
- For safety motorists, pedestrians, cyclists and scooter riders are asked to be alert and aware of the changed conditions for the duration.

WHEN WILL THESE WORKS TAKE PLACE?

Start	7 July – 29 August 2025
Duration	8 weeks
Time and day	7am – 5pm Monday to Friday

THANK YOU

The project team apologises for any inconvenience during these works and thank you for your patience as we construct this vital infrastructure in the Ipswich region.

CONTACT US

To find out more about the project, you can contact us or by visiting the dedicated project webpage via QR link below:

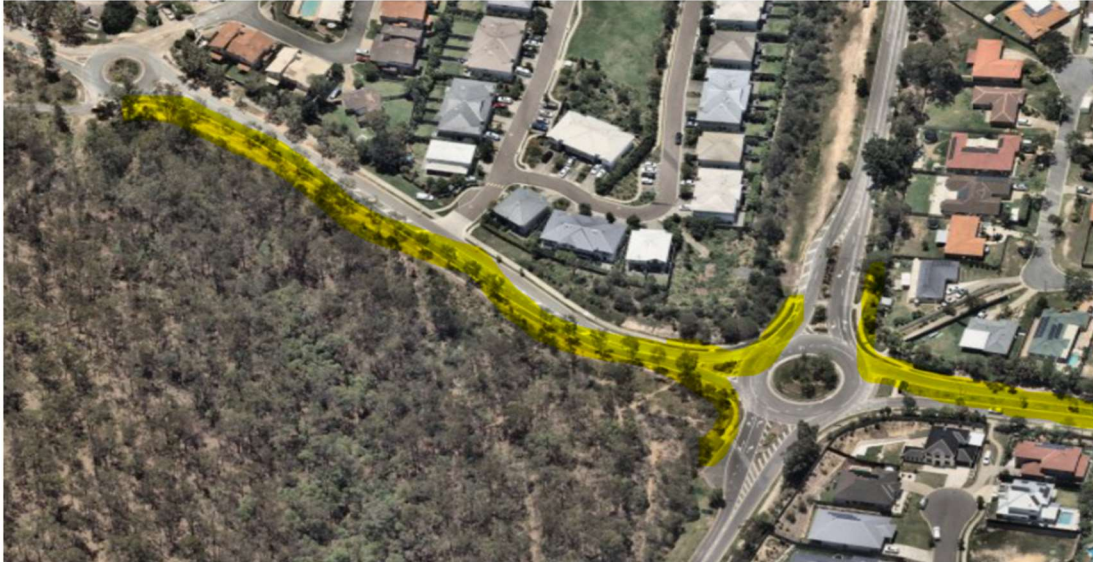
PHONE – 07 3810 6666 (8am-4:30pm)
@capitalprojects@ipswich.qld.gov.au




Work Areas

Springfield Parkway, Springfield College Drive, Bridgewater Road Roundabout, Springfield

1. Vegetation clearing



 Vegetation Clearing Area

2. Service Relocations and Upgrades



 Service Relocation and Upgrade Work Areas