

# Notification of Works

## Robelle Domain, Springfield Central

12 August 2024



### WHAT WORKS ARE COMING UP?

Council have engaged a qualified contractor, *John C. Beaumont Earthmoving*, to undertake desilting works at Robelle Domain, Springfield Central (*see map overleaf*) to restore the asset to pre-disaster function.

### WHY IS THIS WORK HAPPENING?

Following multiple recent flood events, approximately 5000 cubic metres of sediment has been deposited in the sediment basin at Robelle Domain, Springfield Central.

The basin is congested with sediment and not functioning as the energy dissipator that it was designed to be. This is causing additional sediment loads to be deposited downstream and also affecting visual amenity for park users.

### WHEN WILL THIS WORK TAKE PLACE?

Start	Monday, 19 August 2024
Finish	Thursday, 31 October 2024, <i>weather and site conditions permitting</i>
Time and day	7am to 5pm, Monday to Friday

### WHAT DOES THIS WORK INCLUDE?

- Dredging of the sediment basin
- approximately 500 truckloads of sediment will be removed from the site and appropriately disposed of (sediment contains acid sulphate soils, meaning that the sediment is not suitable for reuse at any Council facilities).

For further information on acid sulphate soils, please see <https://tinyurl.com/39zh9zth> or scan the QR code below:



### WHAT DOES THIS MEAN FOR ME?

If you are visiting the area you may experience:

- Full temporary closure of the *Pyramid Lawn and White Gum Terrace*
- full temporary closure of a large section of pathway, impacting usability of the parklands
- rubber matting laid over some sections of footpath
- temporary fencing surrounding the work site and associated transport path and holding area within the parklands
- increased noise (e.g reversing squawkers, machinery etc.)
- visual impacts to the amenity of the parklands
- odour impacts from mud
- changed traffic conditions including potential congestion on nearby roads around the university and child care centre.

### THANK YOU

We thank you in advance for your patience and cooperation while we undertake this essential work.

### FUNDING

*This project is jointly funded by the Australian and Queensland governments under the Disaster Recovery Funding Arrangements*

### CONTACT US

To find out more about these works, you can contact us by:

☎ 07 3810 6666 (8am–4:30pm)

✉ [council.flood.recovery.coordination@ipswich.qld.gov.au](mailto:council.flood.recovery.coordination@ipswich.qld.gov.au)

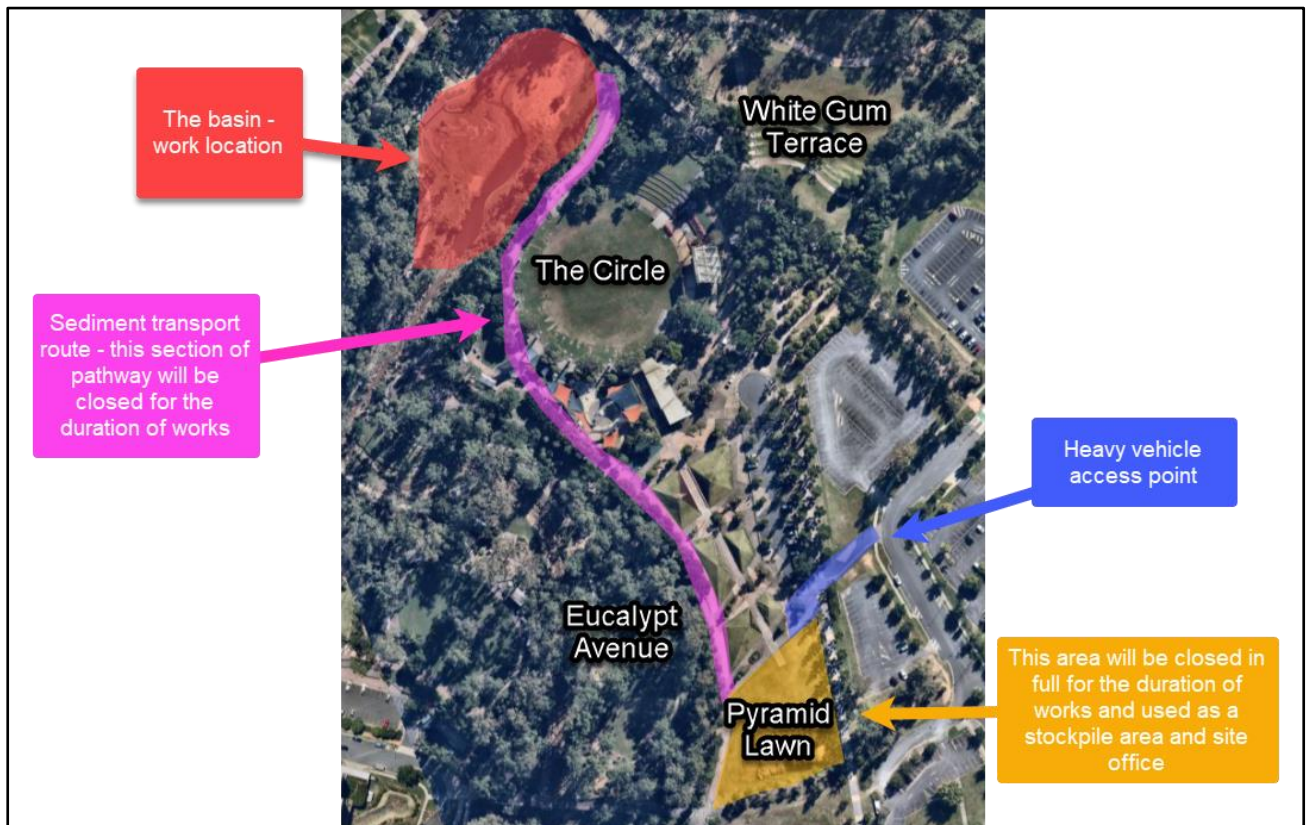
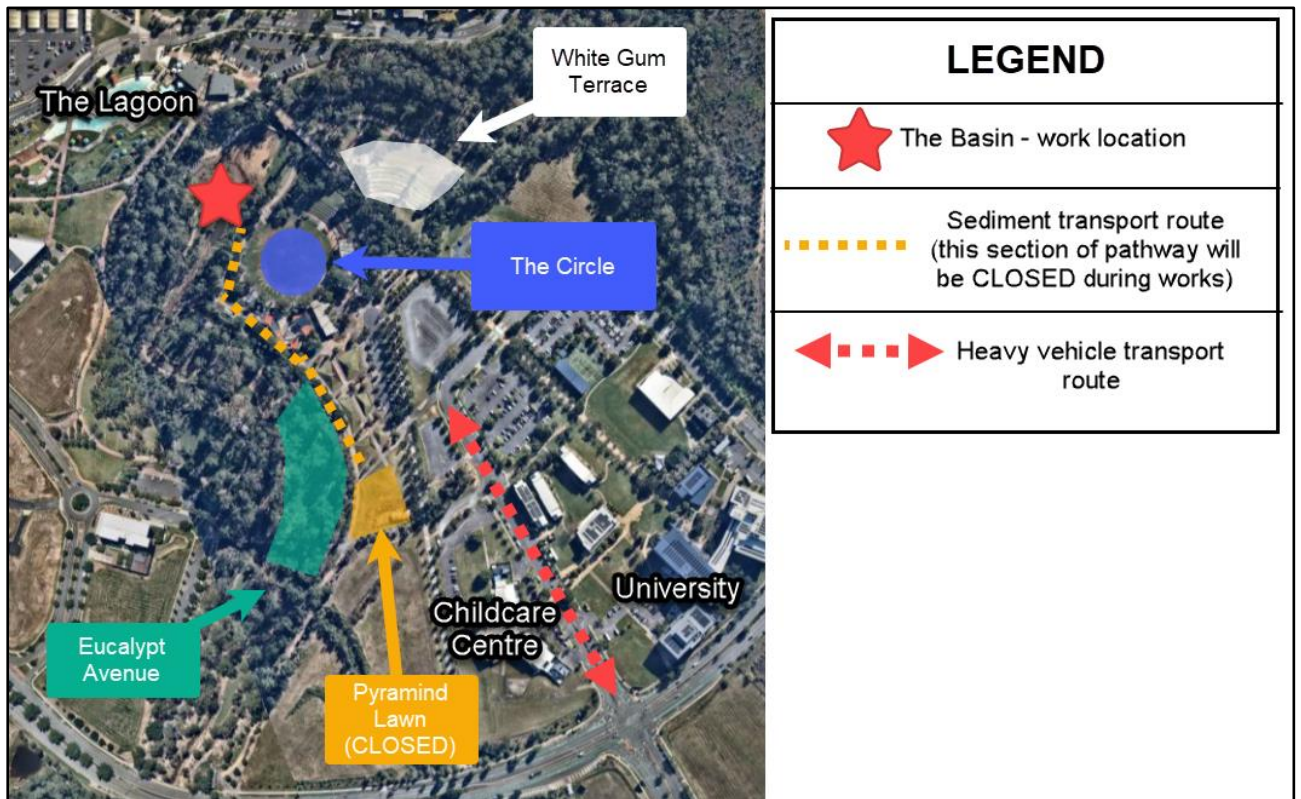
Project information and updates are available on Council's interactive maps, for all works under construction or planned within our Flood Recovery Program:

<https://maps.ipswich.qld.gov.au/floodrecovery>

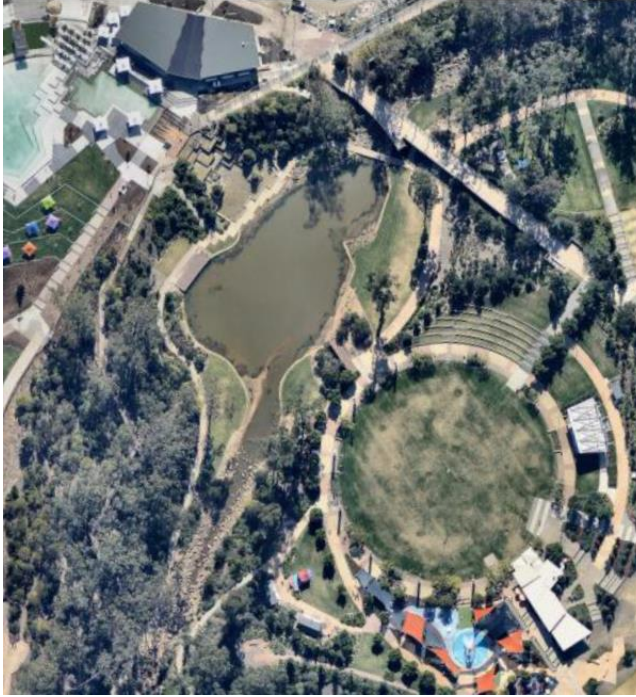


SCAN ME

Location of works (indicative only) – Robelle Domain, Springfield Central



**Before rain and flood events**



**After rain and flood events**

