

# Ipswich City at a Glance

**Total 2017-2018 Budget is \$479 million**

## Concessions

Maximum pensioner concession continues on rates and charges of up to **\$245 per year**. Early payment discount of up to **\$132 per year**.

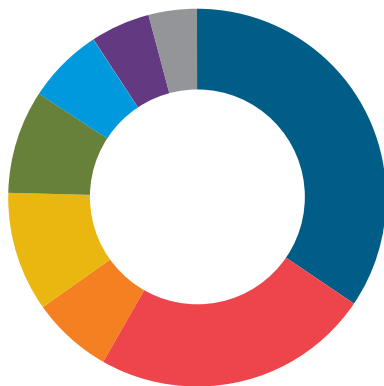
## Average increase

Average residential owner occupier increase is **2.95%** or **\$0.85 per week**.

## Residential net rates and charges for 2017-2018\*

Average residential owner occupier general rate	\$1,280.83
Wheelie bin collection charge	\$346
Enviroplan Levy	\$44

\*based on average residential property



Roads, Drains and Bridges	32%
Parks, Open Space and Green Environment	25%
Economic Development	6%
Waste Collection and Management	9%
Cultural Services	14%
Community Health and Safety	6%
City Planning	4%
Sport and Recreation	4%



**\$146 million**

in total infrastructure spending – up 46%



**\$30.3 million**

for road, park and bridge improvements



**\$19.7 million**

for road upgrades, drainage and flood mitigation



**\$16.3 million**

for landscaping and vegetation management

# Cr David Pahlke Division 10

## Budget Overview

More money than ever before will be invested in roads, bridges and community facilities under Ipswich City Council's 2017-2018 Budget.

The environment is another big winner with funding for conservation estates, supporting koala and platypus populations and promoting sustainability through popular community events.

A bumper line-up of arts, cultural and heritage programs will also be delivered.

Highlights include more than \$6.5 million for improving roads across the division. An additional \$1.3 million has been allocated for bridge upgrades, while \$100,000 goes towards the development of a new off-leash dog area at Yamanto.

Facilities at Rosewood Aquatic Centre will be upgraded with \$103,000 set aside for repainting the pool shell and replacing filters.

For more information on the 2017-2018 Ipswich City Council Budget visit [ipswich.qld.gov.au/budget](http://ipswich.qld.gov.au/budget)



Shop 5 and 6,  
20-22 John Street, Rosewood  
(07) 5464 1088  
[dpahlke@ipswich.qld.gov.au](mailto:dpahlke@ipswich.qld.gov.au)

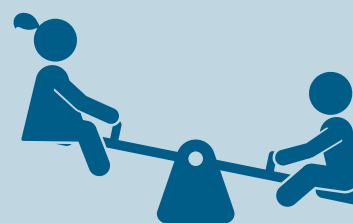
[Facebook.com/CrDavidPahlke](https://www.facebook.com/CrDavidPahlke)  
[Twitter.com/CrDavidPahlke](https://twitter.com/CrDavidPahlke)

## Major Projects and Initiatives



### \$6.5 million

for improving local roads



### \$300,000

for building a playground and shelter at Mack Park, Willowbank



### \$273,000

for upgrading Berlin Street between John and Matthew streets



### \$100,000

for developing an off-leash dog area at Sarah Drive Park, Yamanto