

SADLIERS CROSSING CITATIONS 2
Table of Contents

Rosemont	19 Burnett Street
Rowland Terrace Hilltop Precinct	Rowland Terrace
Sadliers Crossing Railway Bridge	22a Gladstone Road
House	2 Stephenson Street
House	16 Stephenson Street
House	14 Syntax Street
Tallon Street Precinct	Tallon Street
House	22 Thomas Street
Thomas Street Precinct	Thomas Street
Woodend Road Precinct	Woodend Road
Yarrum Lodge	22 Challinor Street

Name "Rosemont" ()

Former/Other Name

Category House

Location 19 Burnett Street, Sadliers Crossing

RPD L2 RP206864, Parish of Ipswich

Local Authority Ipswich City Council

AMG Map Sheet SG 56-14, Ipswich **Grid** MQ7645

Present Tenure Mr J R and Mrs M Brannock, PO Box 345
Ipswich Qld 4305

Listing Boundary Whole allotment, plus adjoining footpath and including all established trees

Other Listings

History

An Ipswich shopkeeper, Mr H M Reeve, owned a house here in 1872. Baptist minister Rev John Straughen bought the house in 1879 and probably extended it. In 1887 the house was purchased by an English immigrant and officer with the Bank of Australasia, Andrew Henry Barlow. He became a member of the Legislative Assembly for the seat of Ipswich the following year, was made Secretary for Public Lands and Agriculture in 1893 and was nominated to the Queensland Upper House in 1896. In 1901, John Joseph Broughton purchased the house and its external details are typical of this Federation period. Broughton's descendants owned it until 1956. It has since been owned by the Clem family, the Carrolls, the MacMahons and is currently owned by the Brannocks. ()

Description

Rosemont is a square plan, hip roofed house, with verandahs on three sides and a brick chimney. Its slightly convex verandah roof is separate and well set down from the main roof. The house, set back from the street, has a brick based fence, with brick piers and a combination of picket and paling. Decorative timber features typical of the Federation period include the triple-railed verandah with dowel balustrades, fretwork fanlights above internal doors and sidelights at the front door. The decorative timber beneath the verandah eaves is not of a typical design. French doors lead on to the verandahs and the external walls of the house are lined with wide 225mm chamferboards. ()

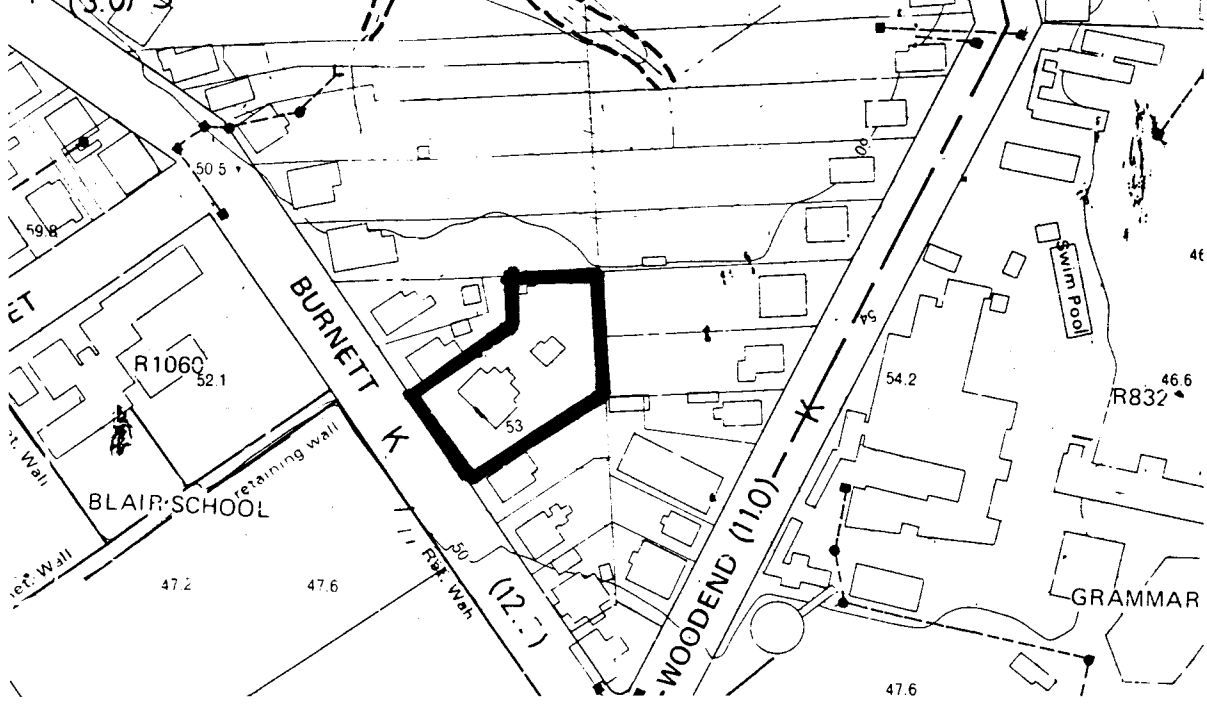
Significance *Level* *local* *Xcity* *regional* *state* *national*

- As a former home of Andrew Henry Barlow, a notable political figure in the history of Ipswich and the state.
- Streetscape value in Burnett St; pivotal location within the area which includes the Woodend Rd precincts, the Harlin Rd/Burnett St/Seals Park precinct, and the Ipswich Grammar School.

Significance of Interior Not inspected

Associated Items

Rosemont is part of the Harlin Rd/Burnett St/Seals Park precinct and is nearby the Woodend precinct. Close by are the Ipswich Grammar School and "Belmont". ()



Source: Ipswich City Council. City of Ipswich topographic series. Amended to August 1990. Scale 1:2500. North at top of map. "@" = associated items.

Name Rowland Terrace Hilltop, Sadlier's Crossing
Precinct

Former/Other Name

Category Precinct

Location 2, 4, 6, 8; 1, 5, 7, 9, 11 Rowland Terrace, Sadlier's Crossing

RPD Various as per the above addresses

Local Authority Ipswich City Council

AMG Map Sheet SG 56-14, Ipswich **Grid** MQ7645

Present Tenure Various as per the above addresses

Listing Boundary All land, public or private, circumscribed in the accompanying map, plus adjoining footpath and including all established trees

Other Listings

History

Description

This opening section of the Rowland Terrace ridge leads off on a curving path, northwest of Real's Park. Views north focus on the house at 6 Rowland Terrace, sited on a triangulated corner. Its small prominent gabled portico, on diagonal axis, faces the corner, flanked by an open verandah bays to Rowland Terrace. The roof, extending over verandahs, has a short ridge emphasised by gablets. Post brackets form strongly arched valances within the portico, and, along the verandah, frame glimpses of bay windows. The vertical pattern of elaborated dowel balustrading is continued more solidly in a short and shallow-arched batten skirt.

The structure at 1 Rowland Terrace, recently renovated, exhibits some original timber detailing, its form, of gable projecting one side into the front verandah section, is repeated within the precinct at 2 Rowland Terrace and 11 Rowland Terrace, where consistencies are found in gablets, window hoods, and hood valances.

Significance **Level** *local* *Xcity* *regional* *state* *national*

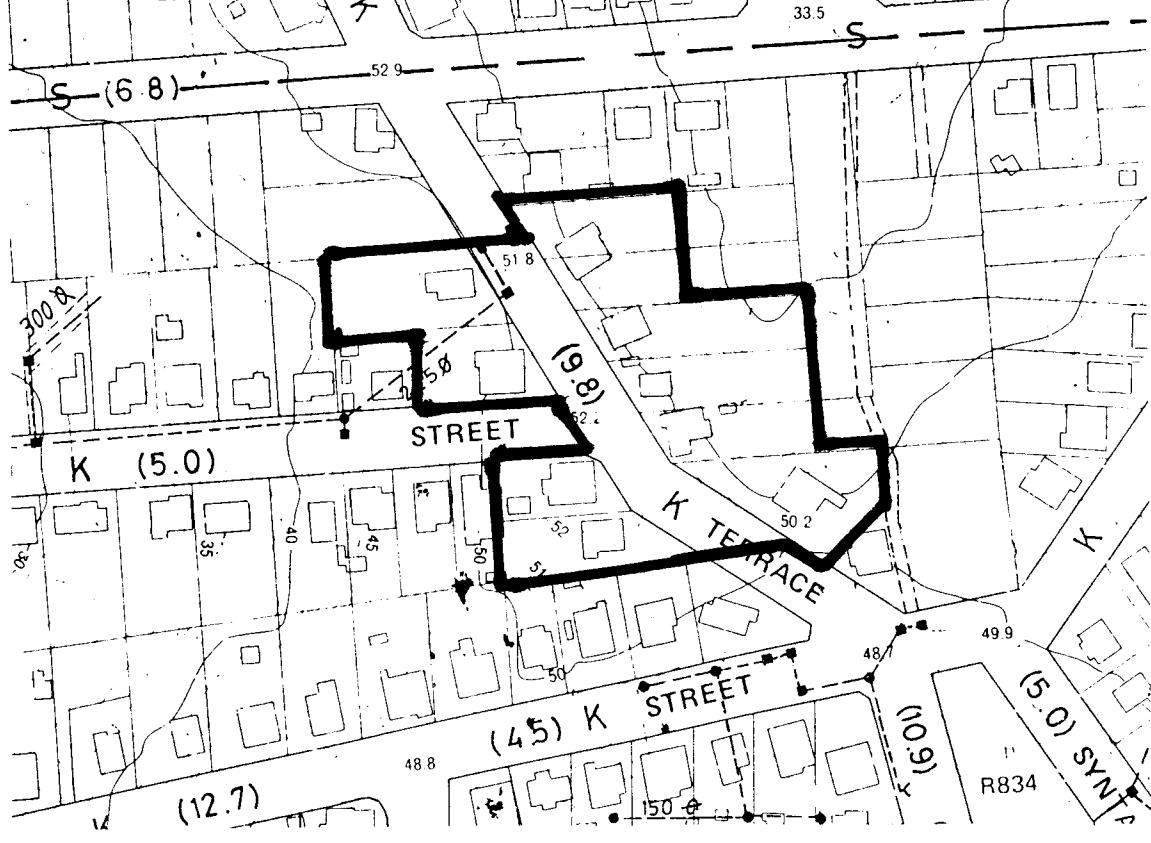
- The precinct is significant in a city-wide context, as the entrance to a ridge road of significant housing, and contains the focal element at 6 Rowland Terrace on the corner of Chamberlain Street.

Significance of Interior Not inspected

Associated Items

Comments

Note: This report has been prepared on the basis of evidence examined by the investigator(s) and seeks to identify the most important heritage values of the item. The purpose of this report is to provide an initial evaluation. A conservation study by a qualified practitioner should be completed before any action is taken which may affect the significance of the item.



Source: Ipswich City Council. City of Ipswich topographic series. Amended to August 1990. Scale 1:2500. North at top of map. "@" = associated items.

Name Sadliers Crossing Railway Bridge

Former/Other Name

Category Bridge

Location 22A Gladstone Road, Sadliers Crossing Q 4305

RPD Lot 1/2 RP146583, Par Ipswich, Co Stanley (Railway Reserve 687)

Local Authority Ipswich City Council

AMG Map Sheet SG 56-14, Ipswich **Grid** MQ7645

Present Tenure Commissioner for Railways
G P O Box 1429, Brisbane Q 4001

Listing Boundary All land circumscribed on the accompanying plan on which is constructed the railway bridge.

Other Listings -

History

The Sadlier's Crossing bridge formed part of the new line designed by Henry C. Stanley (Chief Engineer to Queensland Railways from 1872 to 1901) to replace the difficult approaches to Mihi Creek. Construction of the line commenced in 1873 and it opened in 1875, with the bridge comprising two 104 foot spans. Floods in January 1887 buckled girders on the Sadlier's Crossing bridge and in 1898 the decision was taken to rebuild the bridge and duplicate the line from Ipswich to Brisbane Valley Junction (Wulkuraka). This work was completed in March 1902 to the design of H C Stanley.

Description

A steel bridge with two, through, parallel-chord, double-intersection, Pratt-truss spans, with underslung cross girders. The two spans, each 45.7m in length, carry two railway tracks and a footpath on the up-river side. The abutments supporting piers have rendered surfaces.

Significance **Level** *local* *city* *regional* *Xstate* *national*

- The bridge was designed by H.C. Stanley.
- The bridge is a substantial engineering work.

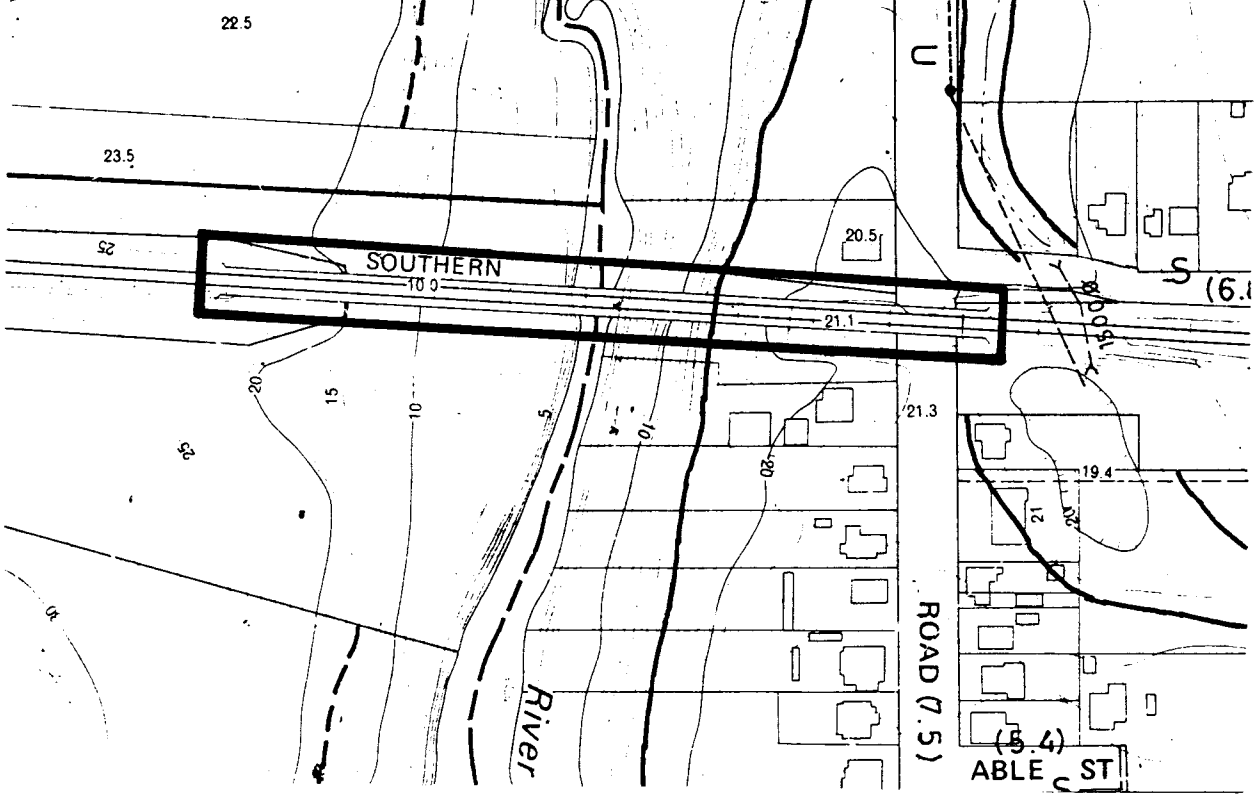
Significance of Interior Not Applicable

Associated Items Not Applicable

Comments

There are excellent views of the Bremer River from the footpath on the bridge and the supporting piers provide a popular climbing ground for experienced rock climbers.

Note: This report has been prepared on the basis of evidence examined by the investigator(s) and seeks to identify the most important heritage values of the item. The purpose of this report is to provide an initial evaluation. A conservation study by a qualified practitioner should be completed before any action is taken which may affect the significance of the item.



Source: Ipswich City Council. City of Ipswich topographic series. Amended to August 1990. Scale 1:2500. North at top of map.

Name 2 Stephenson Street, Sadlier's Crossing
Former/Other Name
Category House
Location 2 Stephenson Street, Sadlier's Crossing
RPD L1 RP75495 Par Ipswich
Local Authority Ipswich City Council
AMG Map Sheet SG 56-14, Ipswich **Grid** MQ7645
Present Tenure Ms M Heggie, 2 Stephenson Street, Sadlier's Crossing Qld 4305
Listing Boundary Whole allotment, plus adjoining footpath and including all established trees.

Other Listings

History

Description

This house, located at the corner of Stephenson and Tallon streets, makes an important contribution to the streetscape and relates to the Tallon Street, Sadlier's Crossing, Precinct. The house is prominent in views west along Tallon Street, from the intersection of that street with Thomas Street. Tallon Street has houses on its northern side and a railway line on its southern side. Plantings along the southern side of the street draw the eye west, where the view is closed by a mature tree and 2 Stephenson Street. As a streetscape element, the house's red roof is the dominant feature. The house has a short-ridged, pyramid roof, with stepped down, convex roofing over verandahs to at least three sides. (The rear verandah is not visible from the street.) The roof ridge is at right angles to the street front. The house rests on low timber stumps and its external walls, at the front and at least one side, have been lined with chamferboard to handrail height. Above the chamferboard, aluminium framed glass windows have been fitted. The house no longer has original fencing. It retains its importance however, because of the prominence of its form in the view west along Tallon Street.

Significance **Level** *x*local city regional state national

- For its streetscape value, as an element which relates to the Tallon Street Precinct and which is prominent in views west along Tallon Street.
- As an example of traditional materials and form.

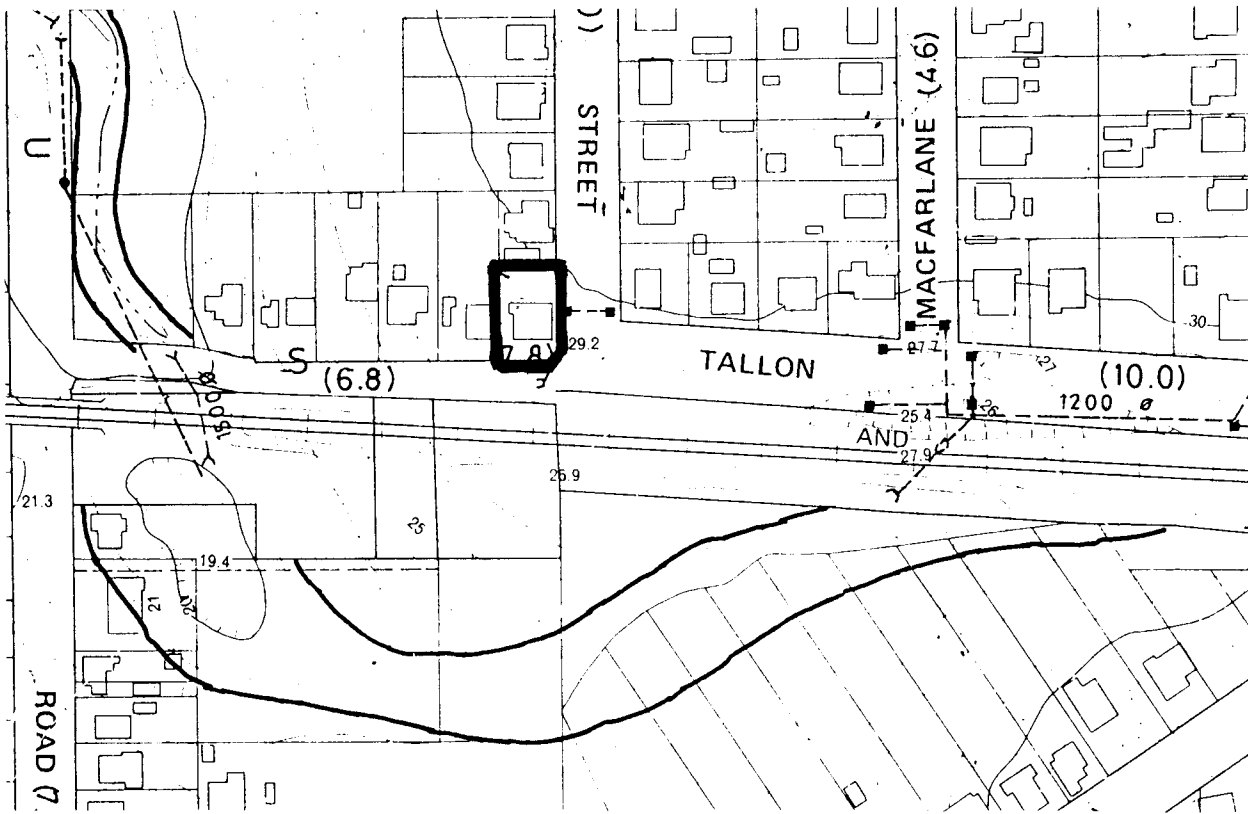
Significance of Interior Not inspected

Associated Items

The Tallon Street, Sadlier's Crossing, Precinct.

Comments

Note: This report has been prepared on the basis of evidence examined by the investigator(s) and seeks to identify the most important heritage values of the item. The purpose of this report is to provide an initial evaluation. A conservation study by a qualified practitioner should be completed before any action is taken which may affect the significance of the item.



Source: Ipswich City Council. City of Ipswich topographic series. Amended to August 1990. Scale 1:2500. North at top of map. "@" = associated items.

Name 16 Stephenson Street, Sadlier's Crossing
Former/Other Name ~~16 Stephenson Street~~
Category House
Location 16 Stephenson Street, Sadlier's Crossing
RPD L3 RP23939 & L4 RP23940 Par Ipswich
Local Authority Ipswich City Council
AMG Map Sheet SG 56-14, Ipswich **Grid** MQ7645
Present Tenure Mr E J Booker, 16 Stephenson Street,
 Sadlier's Crossing Qld 4305
Listing Boundary Whole allotment, plus adjoining footpath and
 including all established trees.
Other Listings

History

This house consists of two separate structures which were joined after the 1893 flood. The front part of the house was once home to a wealthy man by the name of Flanagan. Flanagan's servants lived in another house further down the property, nearer the river. The 1893 flood flooded the servant's quarters. This structure was then moved up to join the main house, which was situated near the road. Most of the original bell ropes for the servants remain in the house. The present owner believes that the deeds to the land and house date to the 1870's.

Description

This house is located near the intersection of Stephenson and Cribb Streets. It comes into view from the higher point of Cribb Street, and the road slopes gently towards it. This position, combined with the natural bushland behind the house and views to distant mountains, creates a pleasant streetscape. The house's roof shape and its fence are dominant elements which contribute to its streetscape value. It is a square plan timber house, with a corrugated iron, ventilated pyramid roof. It has a separate, convex roof over verandahs on three sides. A rear kitchen house structure also has a pyramid roof. Its verandah has timber support posts with decorative brackets. Its balustrades, scallop edged slats, are likely to be an addition. The walls to the verandahs are unlined and cross-braced. There is a double hung window either side of the entry. The house has a picket fence at the front.

Significance *Level* *xlocal* *city* *regional* *state* *national*

- As a good example of the symmetrical, square plan, timber and tin houses built during the Colonial and Federation eras.
- For its streetscape value, which is enhanced by the bushland and views.

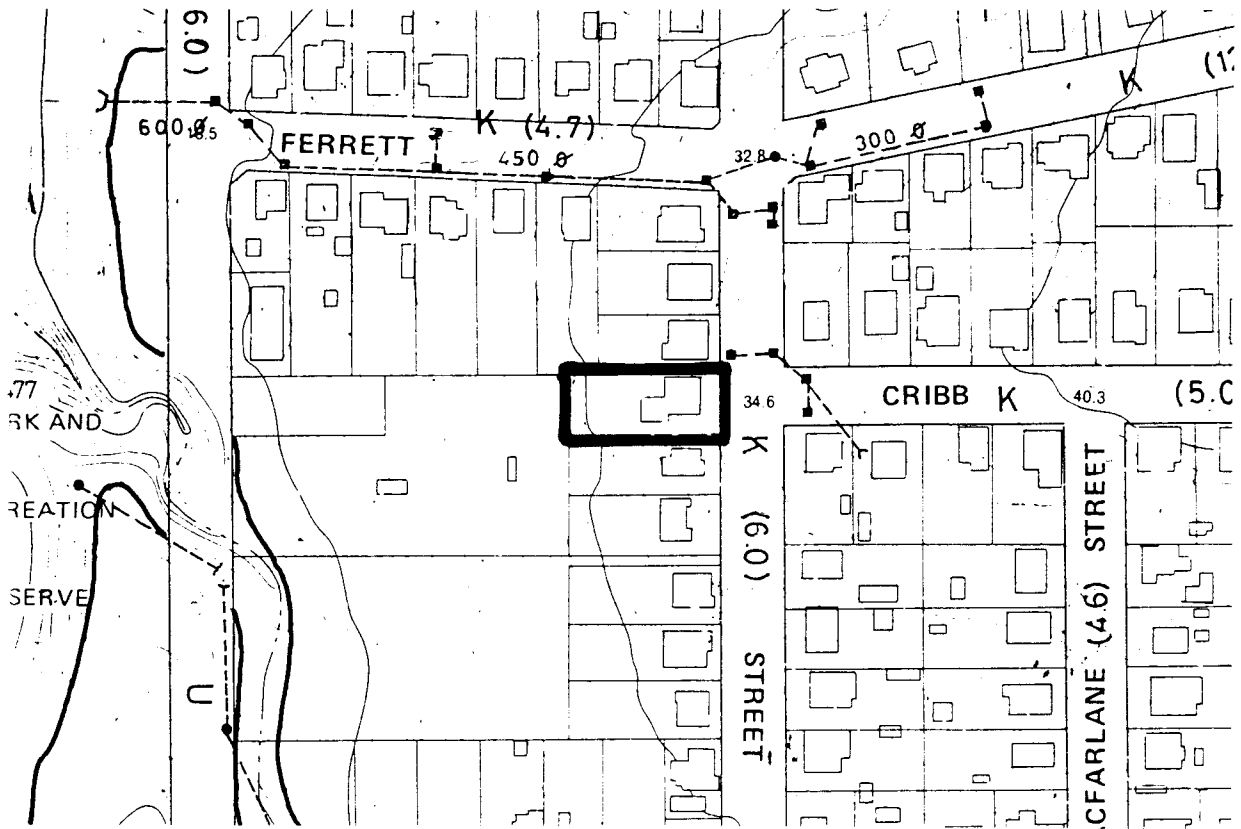
Significance of Interior Not inspected

Associated Items

Comments

Historical information supplied by Mr Booker.

Note: This report has been prepared on the basis of evidence examined by the investigator(s) and seeks to identify the most important heritage values of the item. The purpose of this report is to provide an initial evaluation. A conservation study by a qualified practitioner should be completed before any action is taken which may affect the significance of the item.



Source: Ipswich City Council. City of Ipswich topographic series. Amended to August 1990. Scale 1:2500. North at top of map. "@" = associated items.

Name 14 Syntax Street, Sadlier's Crossing

Former/Other Name

Category House

Location 14 Syntax Street, Sadlier's Crossing

RPD L4 RP3077 Par Ipswich

Local Authority Ipswich City Council

AMG Map Sheet SG 56-14, Ipswich **Grid** MQ7645

Present Tenure Mr R G A & Mrs H J Talsma, 14 Syntax Street, Sadlier's Crossing Qld 4305

Listing Boundary Whole allotment, plus adjoining footpath and including all established trees.

Other Listings

History

Description

This low-set, unadorned house rests much closer to its front alignment than the neighbouring houses. Its front verandah's balustrades align with the front fences of neighbouring properties. The house has a corrugated iron, pyramid roof, with a separate convex roof over its front verandah. The verandah roof and the main roof are set close together and have no guttering between them. Vertical boarding, with a scalloped edge, fills the side of the verandah roof's curve. The verandah balustrading is made of battens which extend from the floor to handrail height. The verandah's support posts are plain and there are no brackets. The front wall of the house is unlined, exposing a combination of cross bracing and vertical stud work. The side walls are lined with chamferboard. Either side of the central front door are double hung windows. Windows at the side of the house are unusually narrow and they provide a strong vertical element in an otherwise regularly proportioned and plain dwelling. The windows are shielded by a steeply sloping, corrugated iron hood, which has boarding infill at each side.

Significance **Level** *x*local city regional state national

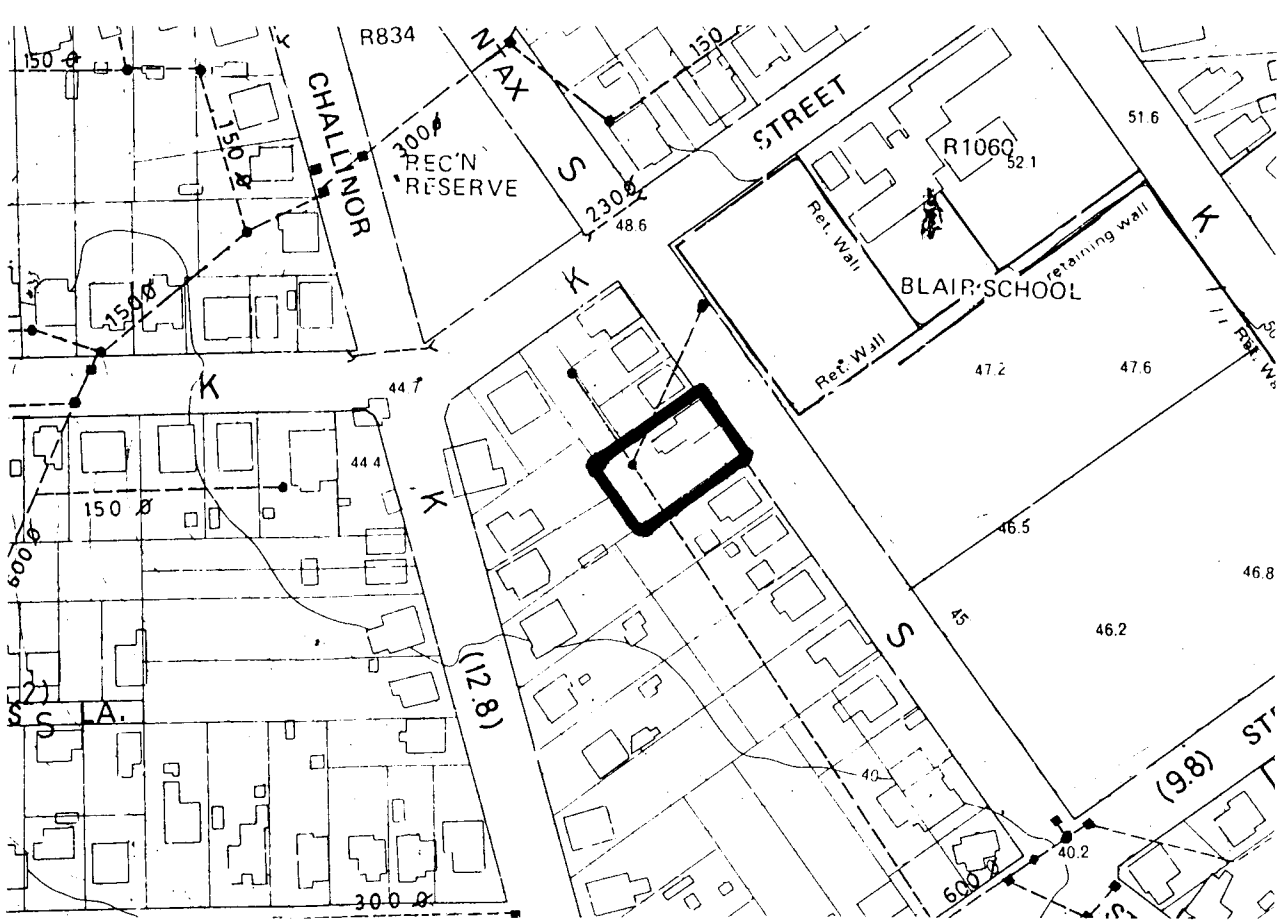
- As an example of traditional building materials and form. Unusual elements, such as the tall, narrow side windows, and the siting of the house so close to its front boundary, contribute to its individual and streetscape values.

Significance of Interior Not inspected

Associated Items

Comments

Note: This report has been prepared on the basis of evidence examined by the investigator(s) and seeks to identify the most important heritage values of the item. The purpose of this report is to provide an initial evaluation. A conservation study by a qualified practitioner should be completed before any action is taken which may affect the significance of the item.



Source: Ipswich City Council. City of Ipswich topographic series. Amended to August 1990. Scale 1:2500. North at top of map. "@" = associated items.

Name Tallon Street, Sadlier's Crossing Precinct
Former/Other Name
Category Precinct
Location Thomas Street Railway Station; 8, 9, 10, 11, 12 and 13 Tallon Street; and 21 Herbert Street, Sadlier's Crossing
RPD Various as per the above addresses
Local Authority Ipswich City Council
AMG Map Sheet SG 56-14, Ipswich **Grid** MQ7645
Present Tenure Various as per the above addresses
Listing Boundary All land, public or private, circumscribed in the accompanying map, plus adjoining footpath and including all established trees.
Other Listings

History

Description

Adjacent to the Thomas Street Railway station, consisting of lines, platforms and a simple waiting shed, the Tallon Street Precinct is defined by modest domestic housing on each side of the railway line, connected by a pedestrian subway. It includes complementary commercial and civic elements, namely a corner shop at 13 Thomas Street and street plantings along Tallon Street. This group retains a semi-rural atmosphere of earlier days despite its proximity to the central city. More generously scaled and opulent houses are found to the rear along Thomas Street, as it climbs to the north.

The group forming this precinct is characterised by a series of low set houses, set close to the front alignment, typically with pyramid roof and a single front verandah, now mostly enclosed. The commercial shop on the corner of Tallon and Thomas Street contrasts with a double gabled street facade, but otherwise conforming in scale and materials with its domestic neighbours. At the other extremity in Tallon Street, the house at 8 Tallon Street sits back from the front alignment, and has a traditional gable form and is of brick construction. A line of mature fig trees stands opposite this shop and dwellings, providing a screen to the railway lines and platforms. From the corner shop the view west is closed by the steep pyramid form of the house at 2 Stephenson Street. On the slightly higher, southern side of the railway line, the exposed frame, pyramid roofed house at 21 Herbert Street overlooks the scene.

Significance **Level** *X*local city regional state national

- As a grouping of characteristic dwellings close to a railway stopping place which retains a semi-rural atmosphere, so close to the present city centre

Significance of Interior Not inspected

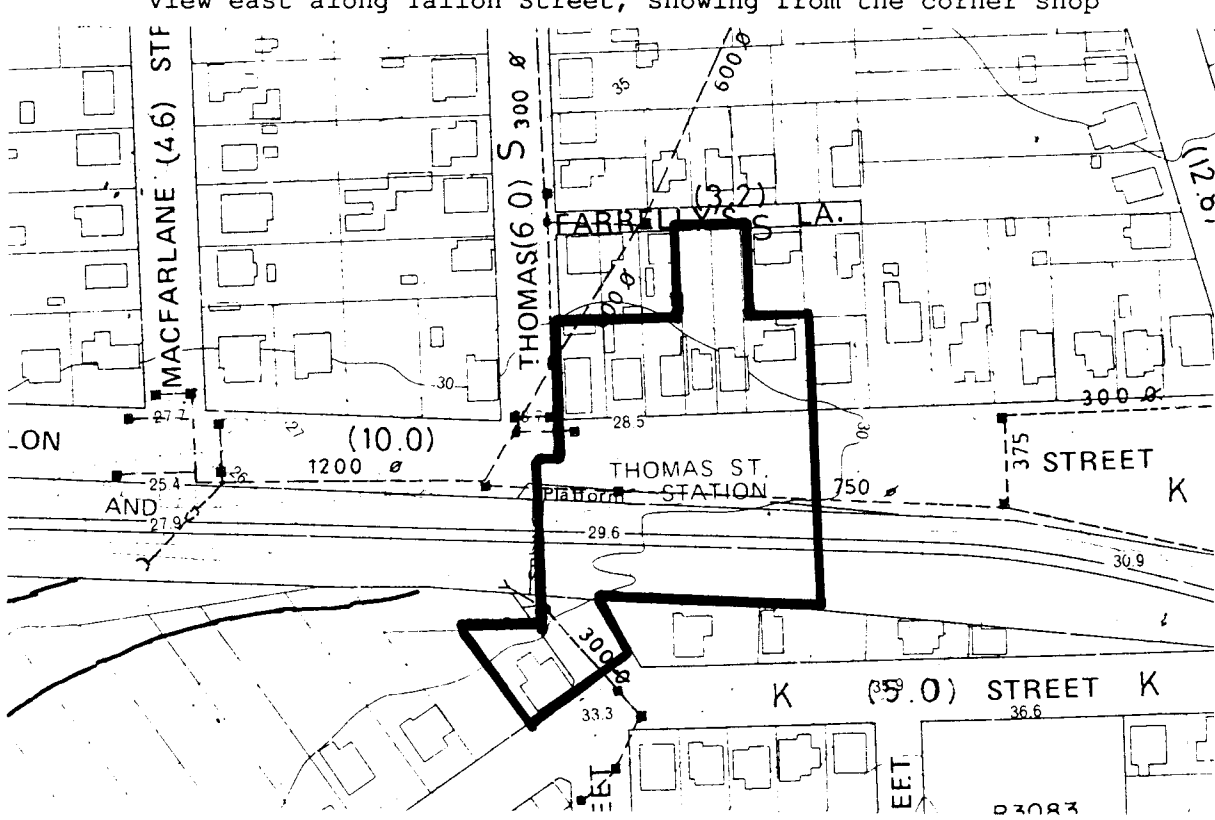
Associated Items

The house at 2 Stephenson Street, listed separately; and the houses of similar form at 4, 6, and 8 Farrelly's Lane, parallel and north of the Tallon Street housing.

Comments

The modern structure at 12 Tallon Street does not require heritage constraints at this time.

view east along railon street, showing from the corner shop



Source: Ipswich City Council. City of Ipswich topographic series. Amended to August 1990. Scale 1:2500. North at top of map. "@ " = associated items.

Name 22 Thomas Street, Sadliers Crossing

Former/Other Name

Category House

Location 22 Thomas Street, Sadliers Crossing

RPD L10 I16105 & L1 RP42956 County of Stanley
Par Ipswich

Local Authority Ipswich City Council

AMG Map Sheet SG 56-14, Ipswich **Grid** MQ7645

Present Tenure Mr R B and Mrs A J Lawrance, 22 Thomas Street,
Sadliers Crossing Qld 4305

Listing Boundary Whole allotment, plus adjoining footpath and
including all established trees.

Other Listings**History**

The house is believed to have been designed by architect George Brockwell Gill, who was responsible for a number of significant civic and domestic buildings in Ipswich. The exact date of its construction is not known.

Description

The house has an asymmetrical front facade, with a wide, low-pitched gable projecting from a half-gabled hip. Its roof is tiled, and the gable which fronts Thomas Street has a panelled verge, typical of inter-war bungalows. The house exhibits a number of features typical of the Federation Bungalow and also shows some similarities, in proportion and scale, with the Inter-war Californian Bungalow. The verandah support posts are paired, with a triangular panel of wood serving as a bracket. These brackets are fixed to the outer side of each pair. Between each post is a central, rectangular panel, with two long, narrow perforations. This panel is flanked by rectangular voids of a similar size to it. The timber balustrade, mostly screened to handrail level by plantings, forms a simple, open, grid-like pattern. The plantings screen the lower section of the house, allowing the wide gable and large simple roof planes to dominate its street presence.

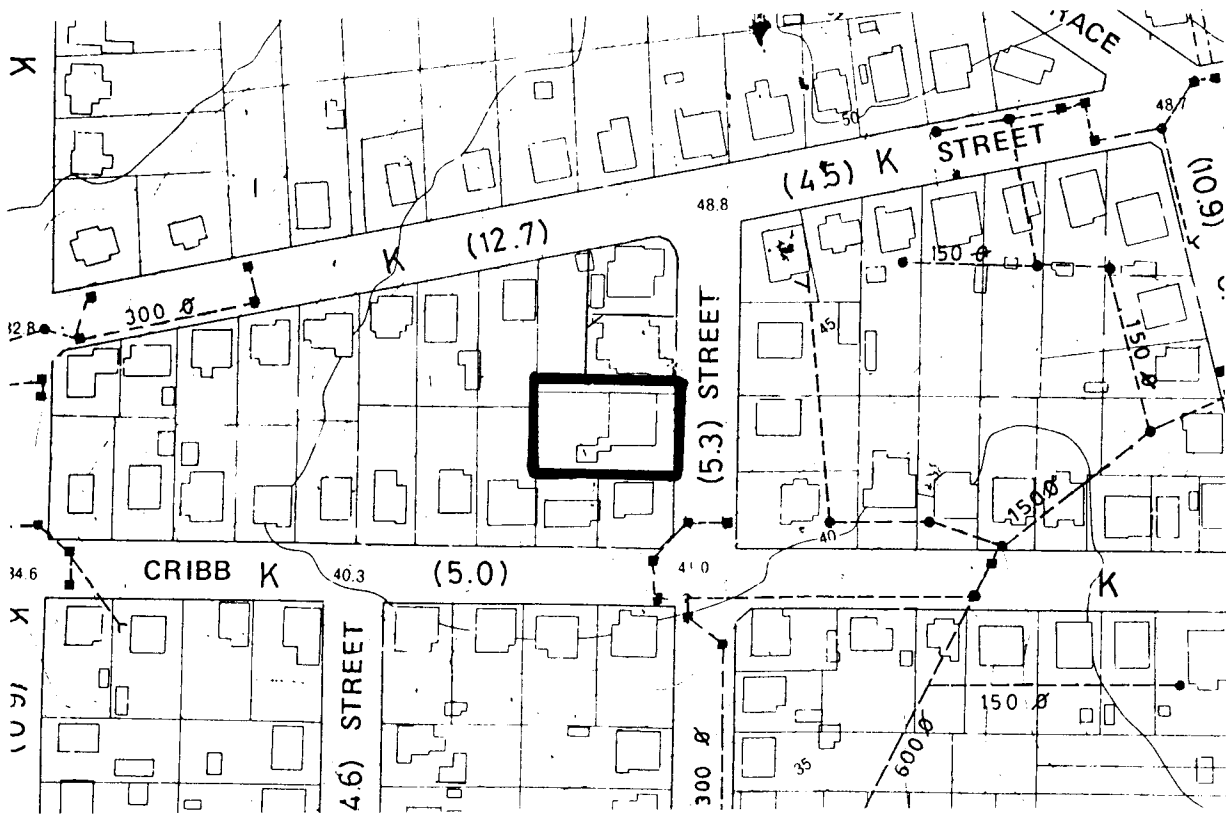
Significance **Level** local xcity regional state national

- As an example of the work of architect George Brockwell Gill. Ipswich has examples of Gill's earlier domestic work, such as Arrochar, Bowerbank and the Ipswich Club, but the detailing here suggests that this is perhaps an example of his later work. As such, it contributes to the breadth of the substantial body of Gill's work which remains in Ipswich.
- For its streetscape value.

Significance of Interior Not inspected

Associated Items**Comments**

Note: This report has been prepared on the basis of evidence examined by the investigator(s) and seeks to identify the most important heritage values of the item. The purpose of this report is to provide an initial evaluation. A conservation study by a qualified practitioner should be completed before any action is taken which may affect the significance of the item.



Source: Ipswich City Council. City of Ipswich topographic series. Amended to August 1990. Scale 1:2500. North at top of map. "Ø" = associated items.

Name Thomas Street, Sadliers Crossing Precinct

Former/Other Name

Category Precinct

Location 22, 27, 29 Thomas Street; 17, 19, 21 Ferrett Street, Sadliers Crossing.

RPD Various as per the above addresses

Local Authority Ipswich City Council

AMG Map Sheet SG 56-14, Ipswich **Grid** MQ7645

Present Tenure Various as per the above addresses

Listing Boundary All land, public or private, circumscribed in the accompanying map, plus adjoining footpath and including all established trees.

Other Listings

History

Description

Thomas Street slopes north of Cribb Street, towards to ridge of Ferrett Street. Focal here, in its stark simplicity, is the low-set house at 29 Thomas Street. A steep pyramid short-ridged roof, unpainted, extends above a modest facade of Georgian simplicity. Verandah posts are without brackets, closed spaced in a pair either side of the front door. A pair of casement windows is centred in the main wall, either side, seen symmetrically within verandah bays. The front verandah roof is stepped down from the main roof and on one side extends its curve beyond the symmetrical facade over an enclosed verandah. The composition is completed by a pair of hoppers, centred in the extension, of the front wall, into the side verandah. The adjacent house at 27 Thomas Street, lower on the slope, is of a later period, more ornate and ordinary.

Across the road at 22 Thomas Street is a gracious house with tiled gabled-hip roof, and distinctive timber detailing to verandah posts and gable pediments. It was designed by architect George Brockwell Gill and is listed separately. Views extend from here south to Denmark Hill. The view to the north rest on a group of houses, on the ridge at 17, 19 and 21 Ferrett Street. These present varying characteristic house forms of the early twentieth century.

Significance **Level** *X*local city regional state national

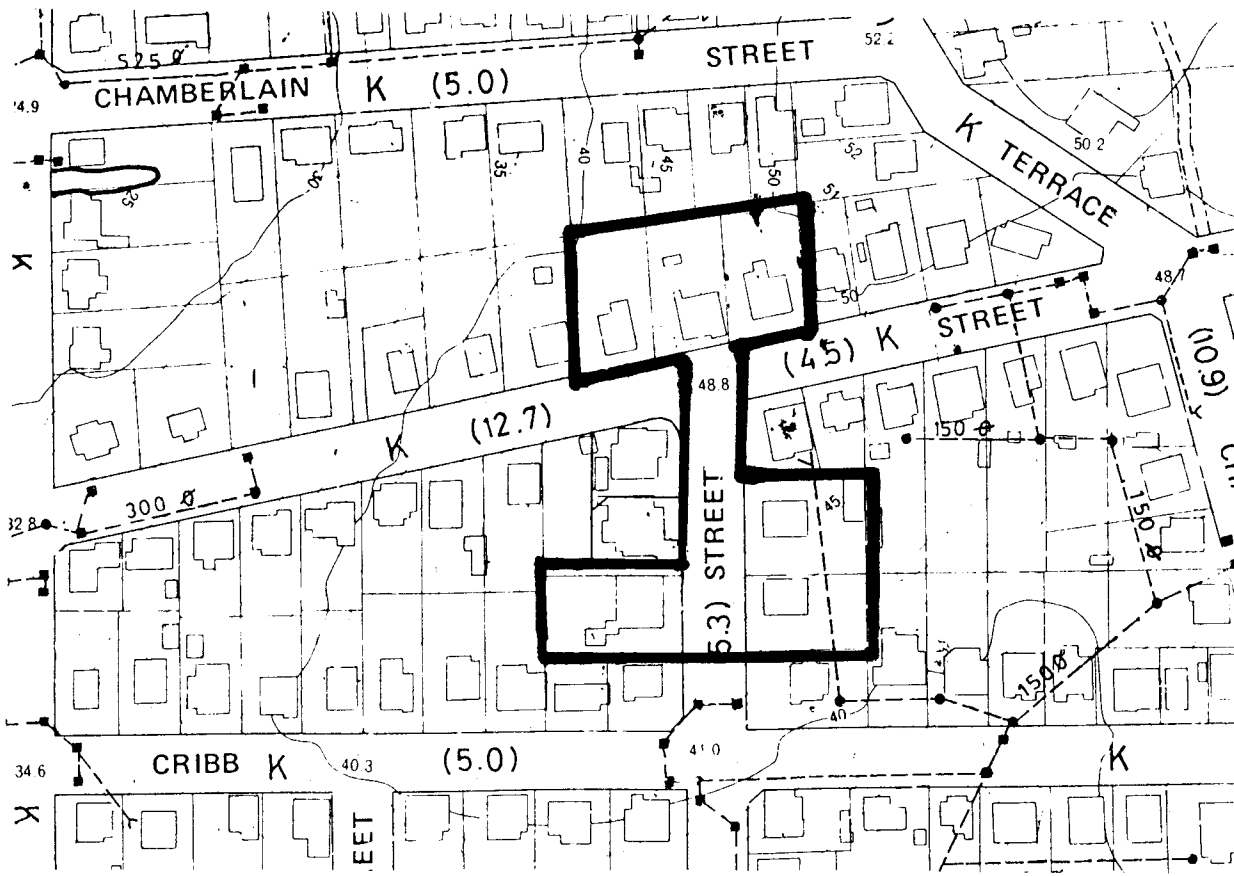
- The precinct is significant is a local context, as it holds, within its sloping section, house forms which are elegant, distinct and contrasting; and along its enclosing ridge, those which are confident and typical.

Significance of Interior Not inspected

Associated Items

Comments

Note: This report has been prepared on the basis of evidence examined by the investigator(s) and seeks to identify the most important heritage values of the item. The purpose of this report is to provide an initial evaluation. A conservation study by a qualified practitioner should be completed before any action is taken which may affect the significance of the item.



Source: Ipswich City Council. City of Ipswich topographic series. Amended to August 1990. Scale 1:2500. North at top of map. "@" = associated items.

Name Woodend Road, Sadlier's Crossing Precinct

Former/Other Name

Category Precinct

Location 12, 14, 16, 18, 20, 24, 26, 28, 30 Woodend Road, Sadlier's Crossing; 11 and 13 Woodend Road, Woodend.

RPD Various as per the above addresses

Local Authority Ipswich City Council

AMG Map Sheet SG 56-14, Ipswich **Grid** MQ7645

Present Tenure Various as per the above addresses

Listing Boundary All land, public or private, circumscribed in the accompanying map, plus adjoining footpath and including all established trees

Other Listings Included in National Trust of Queensland, Ipswich Grammar School Precinct

History

The house which originally stood at 18 Woodend Road was relocated in 1980 to 6 Bowen Street, Woodend.

Description

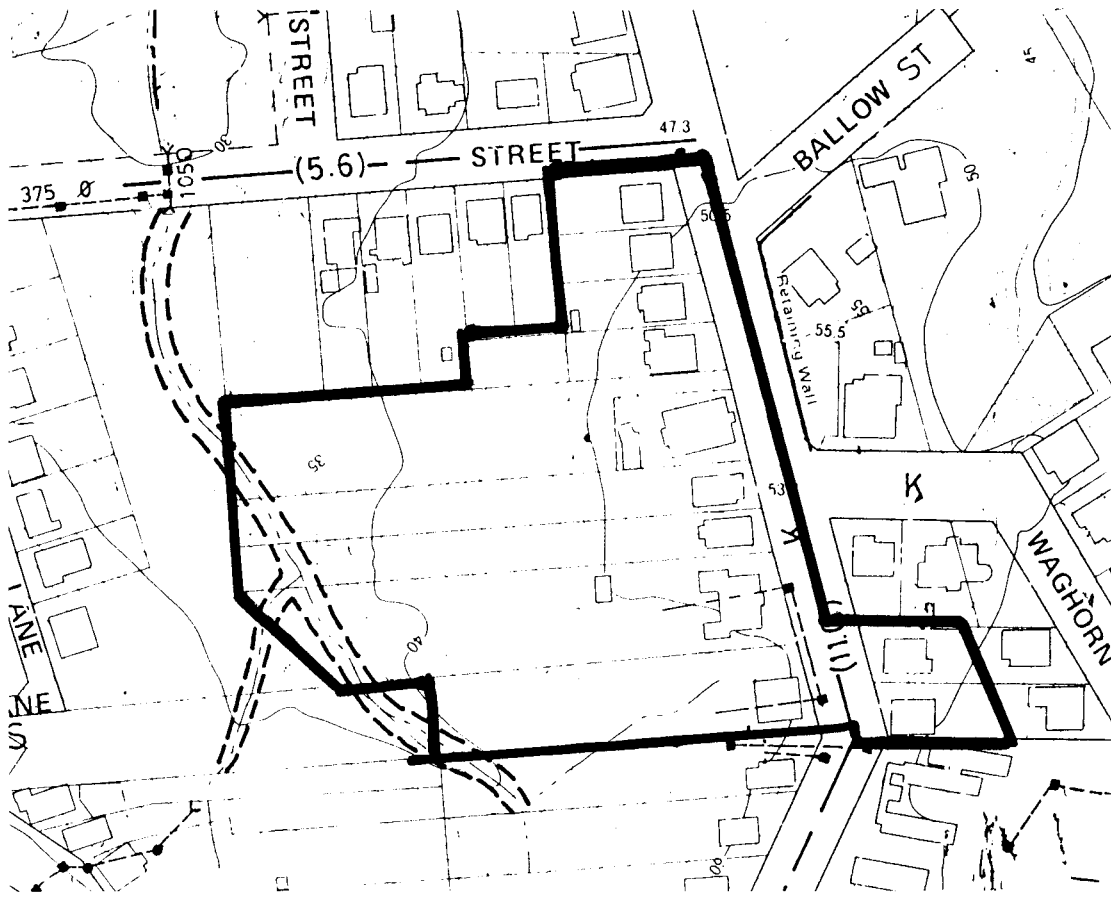
This precinct forms a link in the chain of historic precincts skirting the Ipswich Grammar School and continuing north along Woodend Road. It contains, on higher ground, "Heremai" at 14 Woodend Road, a large house built in Victorian style, for the Francis family in 1888. Symmetrically, it addresses the street, behind a substantial rendered brick and pier fence with decorative cast iron panels. The hipped roof with fretwork eaves brackets rises above a convex curved roof over front and side verandahs. The central entrance displays arched fretwork pediment, and cast iron valance which continues between verandah posts. Balustrading is elaborate cast iron. A substantial chimney to the rear completes the picture of Victorian elegance.

The house at 24 Woodend Road is a relatively larger, elaborate example of the usually modest house-type, with asymmetrical front gable projection. The front and side verandahs remain open. Balustrading is made up of a lower dowelled, and upper crossed panel. Vertical slats, which decorate the gable pediment, also form a shallow-arched valance, with short central pendant. Particular bays are further screened with lattice panels. Half-height lattice doors mark the top of the front stair. The house sits on a long narrow block, and virtually the whole of the land to the rear of the house has been developed into a formal garden, reaching to the rear allotment boundary.

The asymmetrical front gable form is repeated at 26 and 28 Woodend Road. In these houses the main roof ridge develops gablets and finials, but the house forms have been mostly adapted. Concluding the precinct is the house at 30 Woodend Road. It also has gablets, to a gently sloping hipped roof, extending over the verandah. Verandah bays, open to the Hawthorne Street corner, are framed with simple valance and slatted balustrade.

Significance **Level** *local* *Xcity* *regional* *state* *national*

- The precinct is significant in a city-wide context, linking other precincts which skirt the Ipswich Grammar School and continue north along Woodend Road. It contains houses which are grand, and typical examples, and those more modestly consistent in historic form.



Source: Ipswich City Council. City of Ipswich topographic series. Amended to August 1990. Scale 1:2500. North at top of map. "@" = associated items.

Name "Yarrum Lodge"
Former/Other Name "Bailey's Lodge"
Category House
Location 22 Challinor Street, Sadlier's Crossing
RPD L3 RP3095 Par Ipswich
Local Authority Ipswich City Council
AMG Map Sheet SG 56-14, Ipswich **Grid** MQ7645
Present Tenure Mr G D & Mrs K L Murray,
22 Challinor Street, Sadlier's Crossing Qld 4305
Listing Boundary Whole allotment, plus adjoining footpath and
including all established trees.

Other Listings

History

A deed of grant for the land went to Alfred Rose in September, 1864. Rose sold the land occupied by this house to James Frederick Collcott on October 26, 1864. The house was apparently built for Collcott in 1864. It had a parlour - with a brick fireplace - opening off the front verandah, three other small rooms and a detached kitchen, linked to the house by a covered walkway. During the 1870s, the building was mortgaged to Clarke and Hodgson, agents, for 150 pounds. Research by an owner, Lyndy Williams, indicates that the mortgage was foreclosed and that Thomas Clarke and Samuel Hodgson became owners of the house in 1872.

The house was owned by Sophia Rosbrook from 1876 to 1882, when it was taken over by Enoch Bostock. Henry Wyatt bought it in 1883, with a loan from the Ipswich and West Moreton Building Society. His son, Archibald, owned the property from 1904 to 1926. Sarah and Edgar Bailey owned the house from 1926 to 1974. It was then purchased by J. A. DeJong. It sold in 1979 to Raymond Douglas and in 1983, Warren and Lyndy Williams bought the house. The property was offered for auction in 1985, and the details of ownership from this time are not known. In February, 1988, the house was bought by the Murray family, Douglas, his wife Kate and son Jason. The Williams' had named the house "Bailey's Cottage" after previous owners, however the Murray family named it "Yarrum Lodge".

Description

This small house has a slightly unusual configuration, and is divided into two sections. The northern end of the house has a faceted wall, apparently determined by its corner position, and a corrugated iron, hipped roof. This roofing is slightly higher than the abutting southern section of the house, which fronts Challinor Street. This section has a long ridge hipped roof, with a slightly set down, straight roof over its front verandah. Originally the house had a detached kitchen, which was connected by a covered walkway. Rear extensions are mostly screened from view, so the house still has a fairly intact street presence.

Its front verandah is also screened to a degree by tea-tree plantings on the footpath. Some extensions were completed by Mr Bailey and others were done between 1974 and 1982. Some detailing, internally and externally, is inconsistent with the house's age. The house is made of brick, rendered with ruled joints, and has sandstone foundation walls. The bricks may have been locally hand-made. External windows are double hung, with six panes and cedar frames. The house also has a brick chimney. It is believed that the house probably originally had a roof of timber shingles. Its verandah currently has a triple-railed, dowel balustrade. Lattice panels, placed above the top hand-rail and below the verandah eaves, span between the verandah support posts.

Significance	Level	local	xcity	regional	state	national
--------------	-------	-------	-------	----------	-------	----------

- As a fairly intact example of a modest, colonial brick house. It is one of few remaining in Ipswich which were built circa 1860. It is of the same era as Ginn Cottage and Notnel, listed separately.

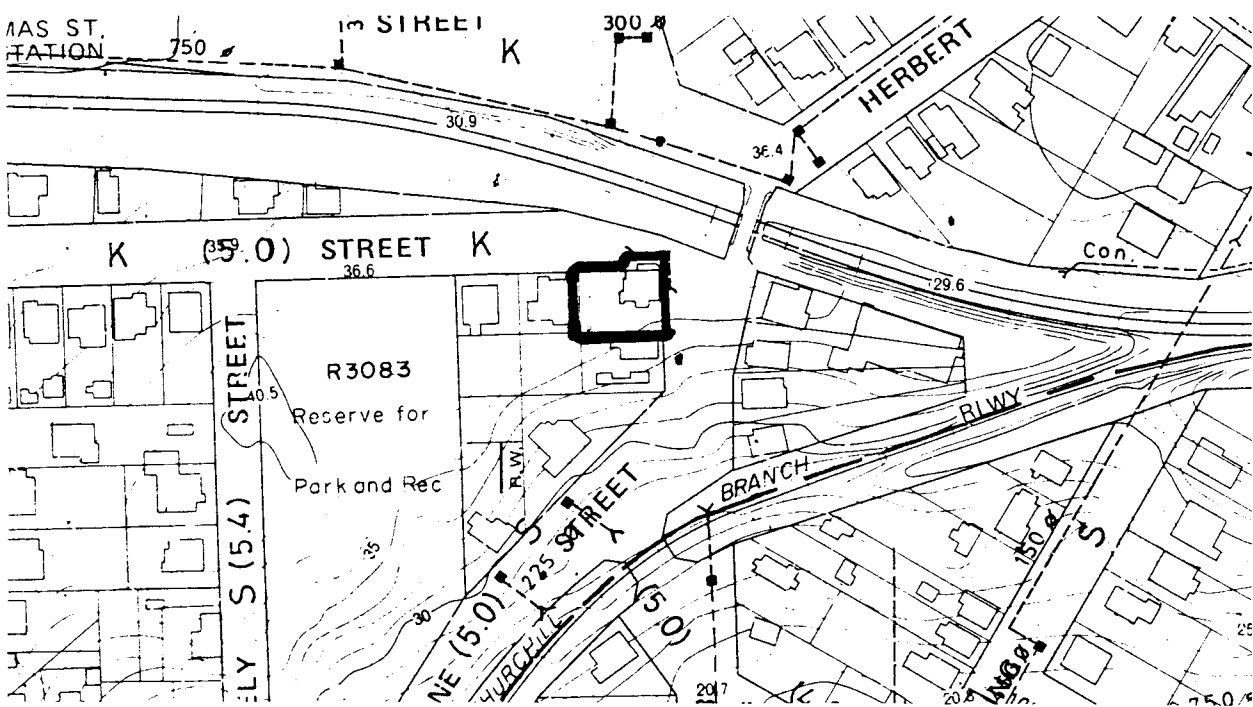
Significance of Interior Not inspected. However, this study's files contain a detailed report by Warren and Lyndy Williams and a report by architect Bruce Buchanan, both of which refer to interior details.

Associated Items

Comments

Sources for this report included research by the National Trust of Queensland. The NTQ's files included a submission to the trust from previous owners of the house and a report by architect Bruce Buchanan. This report also drew on newspaper articles by Ipswich journalist and historian, Robyn Buchanan. See "Historians overlook Bailey's Cottage", *The Queensland Times*, (published in either 1983 or 1984) and "Old cottage seeks a new owner . . .", *The Queensland Times*, 30/8/1985.

Note: This report has been prepared on the basis of evidence examined by the investigator(s) and seeks to identify the most important heritage values of the item. The purpose of this report is to provide an initial evaluation. A conservation study by a qualified practitioner should be completed before any action is taken which may affect the significance of the item.



Source: Ipswich City Council. City of Ipswich topographic series. Amended to August 1990. Scale 1:2500. North at top of map. "@" = associated items.