

2021-2031

City of Ipswich

Resource Recovery Implementation Plan

OVERVIEW

In alignment with Ipswich City Council's Resource Recovery Strategy, the Resource Recovery Implementation Plan (RRIP) outlines the City's resource recovery strategic priorities and details specifically how they will be actioned and delivered over the next 10 year period. Its focus is on reducing waste generation and landfill disposal, maximising resource recovery opportunities in line with Circular Economy principles, providing excellence in customer service, and achieving continuous improvement and development of our People, Processes, Infrastructure and Technology.

This implementation plan sets out a road map detailing how Ipswich City Council will deliver on the City's vision for waste management and resource recovery, to ***"Lead by Example and deliver Best Practice waste and resource recovery solutions"*** thereby ensuring we meet the needs of the Ipswich community both now and into the future.

PROCESS FOR DEVELOPING THE IMPLEMENTATION PLAN



STRATEGIC ACTIONS

This Implementation Plan sets out a list of strategic actions and associated timeframes and is designed to deliver tailored solutions to support the objectives of the Resource Recovery Strategy. Local and state waste strategies, plans and initiatives have been considered in the creation of these priority actions. Along with the four key focus areas, the Implementation Plan identifies actions to foster innovation and economic development, improve data systems and collaboration with local and state agencies and promote the importance of working with the community to achieve better social and environmental outcomes.

COMMUNITY CONSULTATION

According to the *Waste Reduction and Recycling Act 2011*, upon adopting a new waste reduction and recycling plan, or proposing an amendment which will substantially affect the operation of the Plan, Local Governments must make the Plan available for public comment for at least 28 days. To ensure the community was offered an opportunity to provide feedback on the draft Resource Recovery Strategy, an extensive community consultation was undertaken in April-May 2021.



STRATEGIC PRIORITIES AND ACTIONS

STRATEGIC PRIORITY	ACTION	TARGET	INDICATORS FOR SUCCESS
Reduce Waste Generation and Landfill Disposal			
Sustainability	Implement a Council wide internal waste minimisation program	2021	<ul style="list-style-type: none"> Reduced internal volumes of food waste to landfill Increased volumes of recycled material
	Investigate State funding opportunities	Ongoing	<ul style="list-style-type: none"> Offset costs associated with enhancing domestic collection services
	Support innovative and viable resource recovery opportunities	Ongoing	<ul style="list-style-type: none"> Increased recovery of priority materials
Increase Resource Recovery in line with Circular Economy Principles			
Domestic waste collection services	Return glass to yellow lid recycling bin	2021	<ul style="list-style-type: none"> Increased domestic glass recycling
	Promote and optimise Council's current "Opt-In" Food Organics and Garden Organics (FOGO) service	2021	<ul style="list-style-type: none"> Increased diversion and recovery of domestic organics
	Introduce a City-wide FOGO system as a core service	2023-24	<ul style="list-style-type: none"> Increased diversion and recovery of domestic organics
	Align Council's operational model to be responsive to landfill diversion and recycling targets (e.g. collection frequency, resourcing, etc)	2022	<ul style="list-style-type: none"> Increased recycling and landfill diversion
	Achieve Ipswich's defined waste reduction, diversion and recycling targets	2025	<ul style="list-style-type: none"> Conformance with <i>Waste Reduction and Recycling Act 2011 (WRRRA)</i> targets
End market development	Assist to promote manufacturing using recycled resources through supporting Council's Economic Development Initiatives	Ongoing	<ul style="list-style-type: none"> Raised awareness of recycled resources to manufacturers
Collaborate with State and Regional Partners	Work with Government bodies to implement a regional waste database	2021	<ul style="list-style-type: none"> Improved decision making and regional planning
	Gain a better understanding of recyclable material flows across SEQ and their potential impacts	2023	<ul style="list-style-type: none"> Evidence based planning
	Take a regional approach to infrastructure planning and collaboration ensuring Council's needs are met	Ongoing	<ul style="list-style-type: none"> Waste infrastructure plan is cognisant of regional needs
	Identify opportunities for consistent materials recovery messaging in delivery of services between Local Councils	Ongoing	<ul style="list-style-type: none"> Joint campaigns delivered between multiple Local Councils

STRATEGIC PRIORITY	ACTION	TARGET	INDICATORS FOR SUCCESS
Resource Recovery	Provide appropriate support and guidance to private industry to develop the material recovery markets and to commercialise resource recovery ventures for priority waste streams/materials	Ongoing	<ul style="list-style-type: none"> One or more priority waste material markets developed in Ipswich through the private sector
Public Place Recycling	Public place recycling – trial specific waste items (e.g. beverage containers) for recycling in public places	2023	<ul style="list-style-type: none"> Volumes of recyclable waste separated from general waste
Public Event Recycling	Develop comprehensive, clear public event messaging and guidelines	2022	<ul style="list-style-type: none"> Increased recycling at public events
	Promote the availability of Council's waste services and bins for public events	2022	<ul style="list-style-type: none"> Increased uptake of Council's waste services for public events
Recycling Mart	Investigate a Recycling Mart in Ipswich to capture and divert recyclable items from entering landfill	2025	<ul style="list-style-type: none"> Feasibility study into volume of recyclables available for recovery

Provide Excellence in Customer Service

School education	Deliver targeted education presentations in Ipswich schools to embed circular economy thinking and practical ways to implement the principles	Ongoing	<ul style="list-style-type: none"> Number of children participating in education program
Community education	Develop and implement a community engagement and waste education program to improve community understanding about recycling, material separation and waste avoidance	2022	<ul style="list-style-type: none"> Reduced contamination and waste generation and increased resource recovery
	Promote collection/drop-off points for priority materials	Ongoing	<ul style="list-style-type: none"> Provided promotion of collection/drop off points
Awareness	Promote events targeted at waste minimisation and reuse such as Clean Up Australia Day, National Recycling Week and National Swap Day	Ongoing	<ul style="list-style-type: none"> Provided promotion to relevant events
Large Items Kerbside Collection Service	Commence an on demand Large Items Kerbside Collections Service	2022-23	<ul style="list-style-type: none"> Service commenced on time
Residential Subsidy Schemes	Review Residential Subsidy Schemes (e.g. Voucher Schemes)	2024	<ul style="list-style-type: none"> Review to be completed prior to opening of new Recycling & Refuse Facility

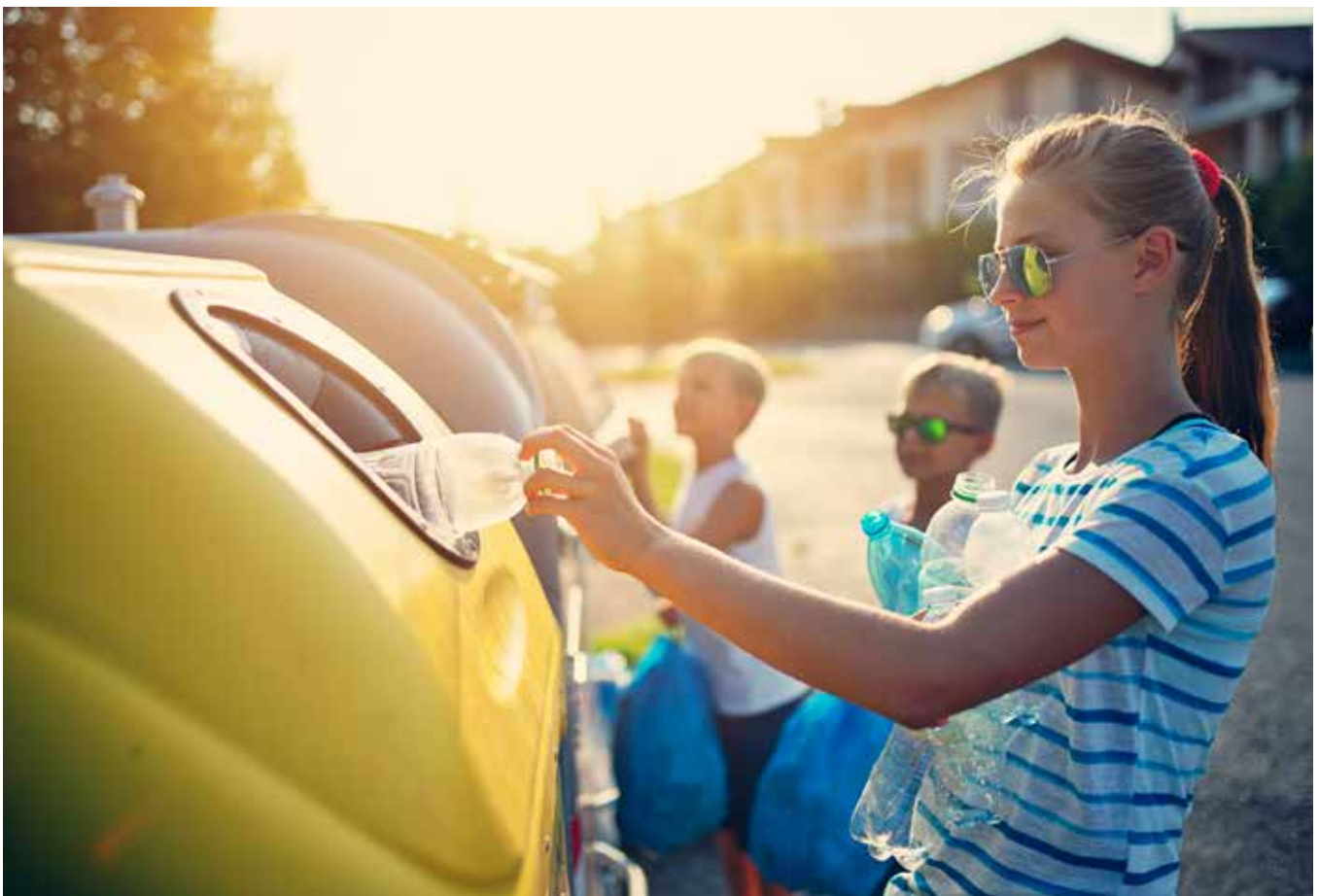
STRATEGIC PRIORITY	ACTION	TARGET	INDICATORS FOR SUCCESS
Continuous development of our People, Processes, Infrastructure and Technology			
National schemes	Align with national waste initiatives	Ongoing	<ul style="list-style-type: none"> ▪ Achieve waste scheme intent
Waste infrastructure	Develop and implement a Waste Management Infrastructure Plan to meet the future needs of Ipswich	2022	<ul style="list-style-type: none"> ▪ Waste Management Infrastructure Plan to guide capital planning to future proof the City
	Conduct location feasibility assessment and preliminary design of the City's new Recycling and Refuse Facility	2022	<ul style="list-style-type: none"> ▪ Location and preliminary designs complete of New Recycling and Refuse Facility
	Invest in improved infrastructure and standards for Council run facilities aimed at improving network design; service level outcomes, site selection, operation and to optimise transport	2024	<ul style="list-style-type: none"> ▪ Provision of fit-for-purpose waste management infrastructure for the public and Council's waste operations
	Deliver a new Recycling and Refuse Facility to increase materials recovery and waste management processing capacity and improve accessibility for the community	2024-25	<ul style="list-style-type: none"> ▪ Deliver the City's new Recycling and Refuse Facility
	Deliver an operational weighbridge at Rosewood Transfer Station	2026	<ul style="list-style-type: none"> ▪ Conformance with the <i>Waste Reduction and Recycling Act 2011</i>
Accountability	Monitor the progress of Council's waste management activities and report annually	Annually	<ul style="list-style-type: none"> ▪ Compliance with Council's reporting requirements
Environmental Compliance	Manage Council's waste operations in accordance with applicable permits and the <i>Environmental Protection Act 1994</i>	Ongoing	<ul style="list-style-type: none"> ▪ Zero non-compliances reported
Procurement	Support the implementation and integration of Council's procurement policy that sets out sustainable procurement principles and practices reflecting the circular economy	Ongoing	<ul style="list-style-type: none"> ▪ Sustainable procurement policy completed and enacted
	Support Council to include recycled content in construction and procurement activities	Ongoing	<ul style="list-style-type: none"> ▪ Recycled content opportunities identified and incorporated into procurement selection criteria and Council design manuals
Data collection systems	Implement data collection and reporting systems to support waste and resource recovery management	2022	<ul style="list-style-type: none"> ▪ New fit-for-purpose systems implemented

PRIORITY ACTIONS

REF.	STRATEGIC ACTIONS/ DELIVERABLES	2021	2022	2023	2024	2025	2026	2027	2028	2029	2030	2031
1	Commence an on-demand Large Items Kerbside Collection Service		■	■								
2	Promote and optimise Council's current Opt-In Food Organics and Garden Organics (FOGO) service	■										
3	Work with Government bodies to implement a regional waste database	■										
4	Implement a Council wide internal waste minimisation program	■										
5	Return glass to yellow lid bin	■										
6	Develop comprehensive, clear public event messaging and guidelines		■									
7	Align operational model to be responsive to landfill diversion and recycling targets		■									
8	Introduce a City-wide FOGO system as a core service			■	■							
9	Promote the availability of Council's waste services and bins for public events		■									
10	Develop and implement community engagement and waste education programs to improve community understanding about recycling, material separation and waste avoidance		■									
11	Develop and implement a Waste Management Infrastructure Plan to meet the future needs of Ipswich		■									
12	Conduct location feasibility assessment and preliminary design of the City's new Recycling and Refuse Facility		■									
13	Implement data collection and reporting systems to support waste and resource recovery management		■									
14	Public place recycling – trial specific waste items (e.g. beverage containers) for recycling in public places			■								
15	Gain a better understanding of recyclable material flows across SEQ and their potential impacts			■								

REF.	STRATEGIC ACTIONS/ DELIVERABLES	2021	2022	2023	2024	2025	2026	2027	2028	2029	2030	2031
16	Invest in improved infrastructure and standards for Council run facilities aimed at improving network design; service level outcomes, site selection, operation and to optimise transport				■							
17	Deliver the City's new Recycling and Refuse Facility				■	■						
18	Review Residential Subsidy Schemes (e.g. Voucher Schemes)				■							
19	Achieve Ipswich's defined waste reduction, diversion and recycling targets					■						
20	Investigate a Recycling Mart in Ipswich to capture and divert recyclable items from entering landfill					■						
21	Deliver an operational weighbridge at Rosewood Transfer Station						■					
22	Assist to promote manufacturing using recycled resources through Council's Economic Development Initiatives	■	■	■	■	■	■	■	■	■	■	■
23	Take a regional approach to infrastructure planning and collaboration ensuring Council's needs are met	■	■	■	■	■	■	■	■	■	■	■
24	Identify opportunities for consistent materials recovery messaging in delivery of services between Local Councils	■	■	■	■	■	■	■	■	■	■	■
25	Provide appropriate support and guidance to private industry to develop the material recovery markets and to commercialise resource recovery ventures for priority waste streams/materials	■	■	■	■	■	■	■	■	■	■	■
26	Support Council to include recycled content wherever possible in construction and procurement activities	■	■	■	■	■	■	■	■	■	■	■
27	Deliver targeted education presentations in Ipswich schools to embed circular economy thinking and practical ways to implement the principles	■	■	■	■	■	■	■	■	■	■	■
28	Promote collection/drop-off points for priority materials	■	■	■	■	■	■	■	■	■	■	■

REF.	STRATEGIC ACTIONS/ DELIVERABLES	2021	2022	2023	2024	2025	2026	2027	2028	2029	2030	2031
29	Promote events targeted at waste minimisation and reuse such as Clean up Australia Day, National Recycling Week and National Swap Day	■										■
30	Manage Council's waste operations in accordance with applicable permits and the <i>Environmental Protection Act 1994</i>	■										■
31	Support innovative and viable resource recovery opportunities	■										■
32	Monitor the progress of Council's waste management activities and report annually	■										■
33	Support the development of an integrated Council procurement policy that sets out sustainable procurement principles and practices reflecting the circular economy	■										■
34	Investigate State funding opportunities	■										■
35	Align with national waste initiatives	■										■





City of
Ipswich

Ipswich City Council
PO Box 191, Ipswich QLD 4305, Australia

Phone (07) 3810 6666
council@ipswich.qld.gov.au
ipswich.qld.gov.au

Join us online:



/IpswichCityCouncil



/ipswich-city-council



/IpswichCityCouncilTV