

# Ipswich City at a Glance

**Total 2017-2018 Budget is \$479 million**

## Concessions

Maximum pensioner concession continues on rates and charges of up to **\$245 per year**. Early payment discount of up to **\$132 per year**.

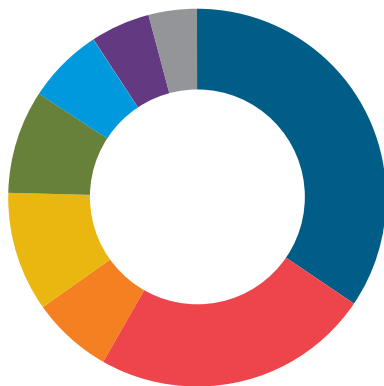
## Average increase

Average residential owner occupier increase is **2.95%** or **\$0.85 per week**.

## Residential net rates and charges for 2017-2018\*

Average residential owner occupier general rate	\$1,280.83
Wheelie bin collection charge	\$346
Enviroplan Levy	\$44

\*based on average residential property



Roads, Drains and Bridges	32%
Parks, Open Space and Green Environment	25%
Economic Development	6%
Waste Collection and Management	9%
Cultural Services	14%
Community Health and Safety	6%
City Planning	4%
Sport and Recreation	4%



**\$146 million**

in total infrastructure spending – up 46%



**\$30.3 million**

for road, park and bridge improvements



**\$19.7 million**

for road upgrades, drainage and flood mitigation



**\$16.3 million**

for landscaping and vegetation management

# Acting Mayor Paul Tully Division 2

## Major Projects and Initiatives

### Budget Overview

Increased investment in roads, bridges and community facilities leads Ipswich City Council's 2017-2018 Budget.

The environment is another big winner with funding for conservation estates, supporting koala and platypus populations and promoting sustainability through popular community events.

A bumper line-up of arts, cultural and heritage programs will also be delivered.

Highlights include \$1.2 million for improving roads in Bellbird Park, Gailes, Goodna and Redbank and \$400,000 for building women's change rooms at Kippen Park.

Works will continue at Annabelle Park and Moodai Reserve in Bellbird Park with \$800,000 for a new playground and shelters.

New security cameras at Augustine Heights and Gailes will become operational in the near future.

For more information on the  
2017-2018 Ipswich City Council Budget visit  
[ipswich.qld.gov.au/budget](http://ipswich.qld.gov.au/budget)



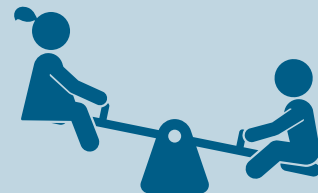
18 Queen Street, Goodna  
(07) 3818 6900  
[ptully@ipswich.qld.gov.au](mailto:ptully@ipswich.qld.gov.au)

[Facebook.com/PaulTully](https://www.facebook.com/PaulTully)  
[Twitter.com/PaulTully](https://twitter.com/PaulTully)



## \$1.2 million

for improving local roads



## \$800,000

for building a playground and  
shelters at Annabelle Park and  
Moodai Reserve, Bellbird Park



## \$400,000

for building women's change rooms  
at Kippen Park, Goodna



## \$95,000

for improving safety along  
sections of Redbank Plains Road  
at Bellbird Park and Goodna