

Notification of Works

Springfield Parkway Upgrade Springfield

Division 2

INF03219

16 July 2025

NIGHTWORKS

STAGE 2 SERVICE RELOCATIONS

From 7pm Sunday night 27 July through till 5am Friday 15 August 2025, service relocations and upgrades will occur along Springfield Parkway between Bridgewater Road Roundabout and Topaz Road, Springfield. It is anticipated these works will take three weeks to complete, weather permitting.

Construction work will be carried out from Sunday to Friday, 7pm till 5am and include:

- Vacuum excavation to locate services
- Water main relocation and upgrade
- Sewer network upgrade
- Telecommunications and electrical relocations and upgrades
- Stormwater drainage network upgrades
- Earthworks to facilitate road crossings for service relocations.

WHAT TO EXPECT?

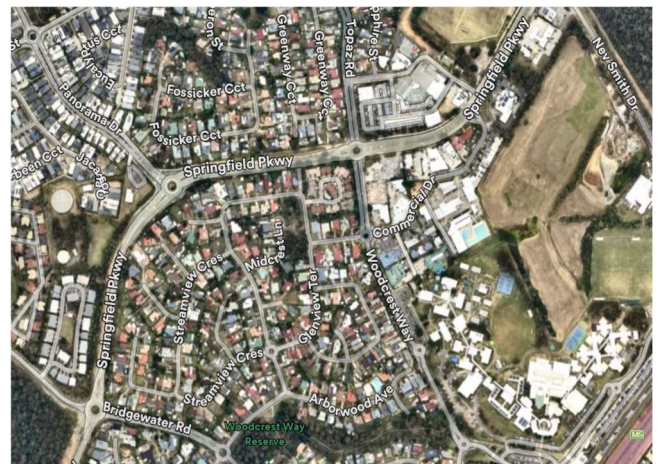
- Changed traffic conditions including periodic temporary lane closures at the Springfield Parkway Topas Road and Bridgewater Road Roundabouts. Access will be available to motorists and pedestrians via traffic control for the duration.
- Vacuum excavation truck to locate underground services prior to upgrades.
- Excavation across Springfield Parkway at Bridgewater Road Roundabout.
- Laying of new, and upgrade of existing telecommunication, sewer, water main and storm water networks.
- Temporary footpath closures near active work areas will occur and alternative pedestrian routes will be signed.
- Traffic control signage, vehicles and controllers to direct traffic.
- Reduced speed limit to 40km/h through work areas.



- Some minor noise and dust associated with these activities. Every effort will be made to minimise these impacts.

WHEN WILL THESE WORKS TAKE PLACE?

Start	27 July – 15 August 2025
Duration	Three weeks
Time and day	7pm – 5am Sunday to Friday



Work Location - Springfield Parkway from Bridgewater Road Roundabout to Topaz Road

THANK YOU

The project team apologises for any inconvenience incurred during these works and thank you for your patience as we construct this vital infrastructure within the Ipswich region.

CONTACT US

To find out more about the project, you can contact us or by visiting the dedicated project webpage via QR link below:

PHONE – 07 3810 6666 (8am-4:30pm)

@capitalprojects@ipswich.qld.gov.au

