

VML:MB
Vicki Lukritz
3810 6221

SPARE

5 October 2017

Sir/Madam

You are advised that a meeting of the **HEALTH, SECURITY AND COMMUNITY SAFETY COMMITTEE** will be held in the **Council Chambers** on the 2nd Floor of the Council Administration Building, 45 Roderick Street, Ipswich commencing at **8.30 am** on **Tuesday, 10 October 2017.**

<u>MEMBERS OF THE HEALTH, SECURITY AND COMMUNITY SAFETY COMMITTEE</u>	
Councillor Ireland (Chairperson) Councillor Pahlke (Deputy Chairperson)	Councillor Antonioli (Mayor) Councillor Wendt (Deputy Mayor) Councillor Pisasale

Yours faithfully

Gary Kellar
ACTING CHIEF EXECUTIVE OFFICER

HEALTH, SECURITY AND COMMUNITY SAFETY COMMITTEE AGENDA

8.30 am on **Tuesday**, 10 October 2017

Council Chambers

Item No.	Item Title	Officer
1	Clean Up Australia Day 2018	EO
2	Safer School Parking Program 2018	EO
3	Health, Security and Regulatory Services Monthly Activity Report – September 2017	SPSM &PO(BO)
4	Kerbside Dumping – Progress Report	PO(Proj)
5	Animal Management Facility Upgrade	MAMO

HEALTH, SECURITY AND COMMUNITY SAFETY COMMITTEE NO. 2017(01)

10 OCTOBER 2017

AGENDA

1. CLEAN UP AUSTRALIA DAY 2018

With reference to a report by the Education Officer dated 2 October 2017 concerning planning for Clean Up Australia Day 2018.

RECOMMENDATION

That the report be received and the contents noted.

Report

2. SAFER SCHOOL PARKING PROGRAM 2018

With reference to a report by the Education Officer dated 2 October 2017 concerning the 2018 Safer School Parking Program which forms part of the 2017–2018 Health and Amenity Plan.

RECOMMENDATION

That the report be received and the contents noted.

Report

3. HEALTH, SECURITY AND REGULATORY SERVICES MONTHLY ACTIVITY REPORT – SEPTEMBER 2017

With reference to a report by the Strategic Policy and Systems Manager and Principal Officer (Business Operations) dated 3 October 2017 concerning the monthly update on the activities of the Health, Security and Regulatory Services (HSRS) Department.

RECOMMENDATION

That the report be received and the contents noted.

Report

4. KERBSIDE DUMPING - PROGRESS REPORT

With reference to a report by the Principal Officer (Projects) dated 3 October 2017 concerning the August results of pro-active intervention in relation to kerbside dumping.

RECOMMENDATION

That the progress report regarding kerbside dumping be received and noted.

Report

5. ANIMAL MANAGEMENT FACILITY UPGRADE

With reference to a report by the Manager, Animal Management Operations dated 27 September 2017 concerning a proposal to upgrade the current Animal Management facility situated at 6 Hooper Street, West Ipswich.

RECOMMENDATION

That the recommendations contained in Attachment A of the report, by the Manager, Animal Management dated 27 September 2017, be adopted, that is:

- A. Council obtain cost estimates for redevelopment of the Hooper Street site;
- B. Cost estimates should be based on a progressive redevelopment inclusive of all structural additions/amendments represented in Concept C.

Report

and any other items as considered necessary.

Health, Security & Community Safety Committee	
Mtg Date: 10/10/2017	OAR: YES
Authorisation: Sean Madigan	

2 October 2017

MEMORANDUM

TO: CHIEF OPERATING OFFICER (HEALTH, SECURITY AND REGULATORY SERVICES)

FROM: EDUCATION OFFICER

RE: CLEAN UP AUSTRALIA DAY 2018

INTRODUCTION:

This is a report by the Education Officer dated 2 October 2017 concerning planning for Clean Up Australia Day 2018.

BACKGROUND:

Clean Up Australia Day (CUAD) 2018 will be held on Sunday, 4 March, 2018. Businesses can participate on Tuesday, 27 February 2018 and schools can participate on Friday, 2 March 2018.

In the past 27 years, Australians have devoted more than 31 million hours towards the environment through Clean Up Australia Day and collected over 331 thousand tonnes of rubbish. The CUAD registration website provides an opportunity for residents to register their own sites to clean up, that is, public spaces that are known to them. The website registration process makes it clear that they are responsible for themselves on the clean-up site and provides guidance on first aid and dos and don'ts for certain types of materials. The site provides a range of resources and equipment they can access to assist them on the day.

The 2017 CUAD campaign consisted of the following:

- Promotion of CUAD in the QT, Satellite, Moreton Border News and Advertiser encouraging residents and schools to register their own sites for CUAD using Ipswich Pride messaging, environmental impact statistics of rubbish, benefits of recycling/upcycling/reuse.

- Council provided support to residents hosting their own sites by: providing delivery of general rubbish bins and skip bins for the day (number of skip bins was limited and allocated based on size of clean-up site and number of volunteers).
- Every school received a letter aimed at promoting CUAD and inviting them to participate.
- Two competitions were run involving CUAD participants making a sculpture out of the rubbish they collected on CUAD. Feedback was received from participants that entered the sculpture competition. They advised it was too difficult to build sculptures with the types of rubbish they had collected.
- A social media campaign was designed for each Councillor to deliver in their own areas (e-newsletters, Facebook, Twitter, LinkedIn) including a hashtag for referencing photos captured by residents and participating schools.
- A list of registered CUAD sites were sent to each Councillor in their division prior to CUAD to know what was happening in their divisions.

CUAD 2018:

Given the feedback from the sculpture competition, this year Council will be running a photo competition where schools and residents can send in photos of rubbish they have collected. Winners will be presented with a gift voucher to The Source Bulk Foods, a local specialty grocery store in Springfield. They have a zero-waste revolution. They are a plastic bag free shopping experience where you can bring and recycle your own bottles, containers, jars and bags.

Council will also be focusing on the small amounts of litter by running a smoke butt littering awareness campaign with a competition element. Cigarette butts are not biodegradable and are the most littered item in the world. Similar to the above, schools and residents can send in photos of the amount of smoking butts they collect. Winners will again be presented a gift voucher to The Source Bulk Foods.

Promotion of CUAD 2018 will occur on Council's website and social media and in the QT, Satellite, Moreton Border News and Advertiser encouraging residents and schools to register their own sites for CUAD. Council will again provide support to residents hosting their own sites by providing delivery of general rubbish bins and skip bins for the day (number of skip bins was limited and allocated based on size of clean-up site and number of volunteers).

CONCLUSION:

Clean Up Australia Day (CUAD) 2018 will be held on Sunday, 4 March, 2018. Businesses can participate on Tuesday, 27 February 2018 and schools can participate on Friday, 2 March 2018.

RECOMMENDATION:

That the report be received and the contents noted.

Nicole Grant
EDUCATION OFFICER

I concur with the recommendations contained in this report.

Barbara Dart
STRATEGIC POLICY AND SYSTEMS MANAGER

I concur with the recommendations contained in this report.

Sean Madigan
CHIEF OPERATING OFFICER (HEALTH, SECURITY AND REGULATORY SERVICES)

Health, Security and Community Safety Committee	
Mtg Date: 10/10/17	OAR: YES
Authorisation: Sean Madigan	

2 October 2017

MEMORANDUM

TO: CHIEF OPERATING OFFICER (HEALTH, SECURITY AND REGULATORY SERVICES)

FROM: EDUCATION OFFICER

RE: SAFER SCHOOL PARKING PROGRAM 2018

INTRODUCTION:

This is a report by the Education Officer dated 2 October 2017 concerning the 2018 Safer School Parking Program which forms part of the 2017–2018 Health and Amenity Plan.



BACKGROUND:

The Health and Amenity Plan identifies the ***Safer School Parking Program*** as a key priority to improve parking behaviour around schools to make school zones a safer area for our community. The School Safe Parking Program originally commenced in 2008 to address concerns regarding road safety at schools within the Ipswich City Council area. Activities associated with the project have progressed through many stages over time including the use of fixed location motion sensor cameras, automatic numberplate recognition (ANPR) technology, foot patrols and joint patrols with the Queensland Police Service.

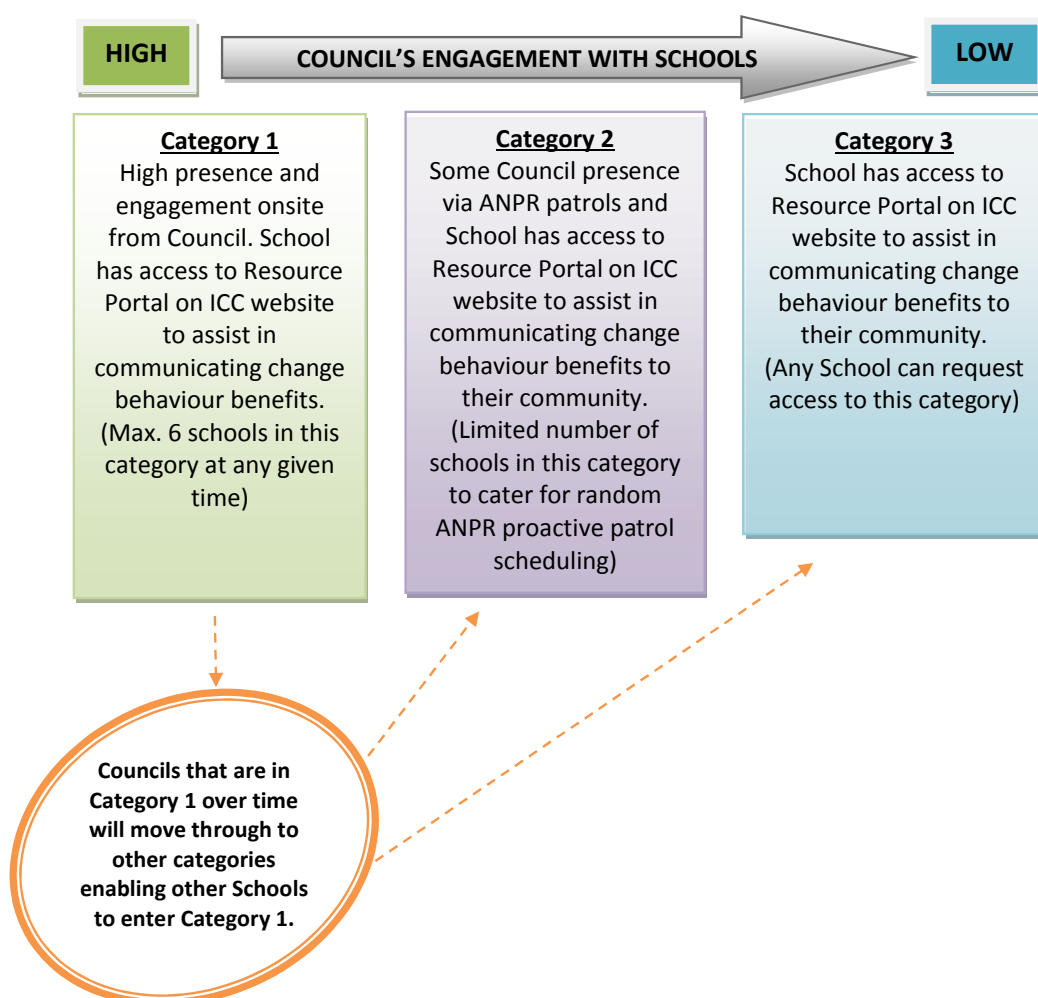
A major change to the program was implemented for the start of the school year in 2016 with Council Officers conducting foot patrols at schools and speaking to drivers about their parking behaviour. During the program, motorists were detected engaging in illegal parking activities. In most cases, once spoken to, they moved on and complied with the instructions given. Where the motorist did not comply, Penalty Infringement Notices (PIN's) were issued.

NEW APPROACH:

The current Safer School Parking Program has a high impact on Council resources and unless officers have a continuous physical presence at Schools, behaviour change of drivers picking up their children from school has proven to be very limited. This has triggered Council to review the current program to see where positive impacts may be made and to determine how Council can assist Schools to build capacity within their school community.

A new category structure has been developed to assist schools as per their individual requirements. Three (3) categories have been developed with schools being placed into a category subject to their previous history, current involvement and level of interest with the School Safe Parking Program.

Participation in this proactive program is an 'opt in' and Council will commence engagement with Schools immediately. This program does not negate the fact that Council will still undertake compliance action where complaints are raised. This reactive enforcement will still continue. The Safer School Parking Program commencing in 2018 will focus on building capacity and providing support to schools starting with a Category 1 (maximum of 6 schools can participate due to resources available) through to Category's 2 and 3 (lower level support).



The categories in more detail are listed below:

Category 1 – High (Maximum 6 Schools)

- Compliance/Education Officer available to meet with School and discuss their options:
 - Police safety week – Council connect School with Police (first week of each term)
 - Enforcement camera at School hot spot (on a rotation basis)
 - Classroom visits
 - Presence at one school event to target new parents (orientation days/fetes)
 - ANPR Car (periodic patrolling over the first month of each term)
 - Booking of banner flags on a rotational basis
- Resource Portal
 - Walk safe maps
 - Brochures
 - Messages
 - Images
 - Vests (School parking volunteers on foot)

Category 2 – Medium

- Compliance/Education Officer available to meet with School and discuss their options:
 - ANPR Car – random patrolling
 - Booking of banner flags on a rotational basis
- Resource Portal
 - Walk safe maps
 - Brochures
 - Messages
 - Images
 - Vests (School parking volunteers on foot)

Category 3 – Low

- Resource Portal
 - Walk safe maps
 - Brochures
 - Messages
 - Images
 - Vests (School parking volunteers on foot)

It is anticipated that schools currently in Category 1 will, with the level of assistance provided, phase out into a lower category as the school year progresses thus opening up an opportunity for schools in need of this level of assistance.

BENEFITS TO COMMUNITY AND CUSTOMERS:

The Safer School Parking Project offers an opportunity for Council Officers to engage with the Schools directly and their communities (drivers/parents and children) and provide an educative approach to illegal parking behaviours. This approach allows people the opportunity to correct their behaviour without receiving a PIN in most cases.

CONCLUSION:

Promoting education to school communities about the benefits of safe road travel and safe parking within school zones will enhance the health and wellbeing of our community as outlined within the Health and Amenity Plan.

RECOMMENDATION:

That the report be received and the contents noted.

Nicole Grant
EDUCATION OFFICER

I concur with the recommendation contained in this report.

Barbara Dart
STRATEGIC POLICY AND SYSTEMS MANAGER

I concur with the recommendation contained in this report.

Sean Madigan
CHIEF OPERATING OFFICER (HEALTH, SECURITY AND REGULATORY SERVICES)

Health, Security and Community Safety Committee	
Mtg Date: 10.10.17	OAR: YES
Authorisation: Sean Madigan	

MW:MW

3 October 2017

MEMORANDUM

TO: CHIEF OPERATING OFFICER
(HEALTH, SECURITY AND REGULATORY SERVICES)

FROM: STRATEGIC POLICY AND SYSTEMS MANAGER AND
PRINCIPAL OFFICER (BUSINESS OPERATIONS)

RE: HEALTH, SECURITY AND REGULATORY SERVICES MONTHLY ACTIVITY REPORT –
SEPTEMBER 2017

INTRODUCTION:

This is a joint report by the Strategic Policy and Systems Manager and Principal Officer (Business Operations) dated 3 October 2017 concerning the monthly update on the activities of the Health, Security and Regulatory Services (HSRS) Department.

BACKGROUND:

The HSRS Department is responsible for the management of compliance activities across the City. The attached HSRS Monthly Activity Report (**Attachment A**) is for the month of September 2017. The data within the report is separated into two components:

Compliance Delivery Status: Provides an update on service requests, infringements, warnings, prosecutions and appeals, licences, permits and design assessments approved in the month.

Other Program Delivery Status: Provides an update on other programs, such as the Immunisation clinics, implementation of new laws, special events and any stakeholder engagement which may include the progress of projects for the HSRS Health and Amenity Plan for 2017-2018.

CONCLUSION:

The HSRS Monthly Activity Report provides an update on compliance and other programs being delivered during the month with comparisons to previous periods.

ATTACHMENT:

Name of Attachment	Attachment
HSRS Monthly Activity Report – September 2017	Attachment A

RECOMMENDATION:

That the report be received and the contents noted.

Barbara Dart and Maree Walker

STRATEGIC POLICY AND SYSTEMS MANAGER; PRINCIPAL OFFICER (BUSINESS OPERATIONS)

I concur with the recommendation contained in this report.

Sean Madigan

CHIEF OPERATING OFFICER

(HEALTH, SECURITY AND REGULATORY SERVICES)

Health, Security and Regulatory Services

September 2017
MONTHLY ACTIVITY REPORT



ipswich.qld.gov.au



Table of Contents

Introduction.....	2
Compliance Delivery Status.....	3
Customer Service Requests	3
Penalty Infringement Notices (PINs) and Warnings	8
Prosecutions and Appeals.....	10
Infringement Review requests for September 2017	10
Licences, Permits and Design Assessments	11
Other Program Delivery Status.....	13
Immunisation Program	13
Health and Amenity Plan	14



Introduction

Council's Department of Health, Security and Regulatory Services (HSRS) is the lead agency in the Ipswich community for the design and delivery of policy and programs that develop and drive a safe and healthy community.

Health and safety can be linked to the majority of services and responsibilities undertaken by Ipswich City Council. Local Councils are no longer just known for the three R's – Roads, Rates and Rubbish. From ensuring children are safe during peak school pick up and drop off times, providing CCTV protection and coverage across the City all the way to guiding businesses on how they can safely prepare food in cafes and restaurants, health and safety is at the very cornerstone of what the community wants. Health and safety is also critical to new communities when they are developed, as it will foster active lifestyles, provide easy access to healthy foods, create streets that are safe to walk through and encourage positive relationships between neighbours that are free of nuisance.

This monthly activity report for **September 2017** provides a snap shot of compliance activities for specific activities, outputs and outcomes.

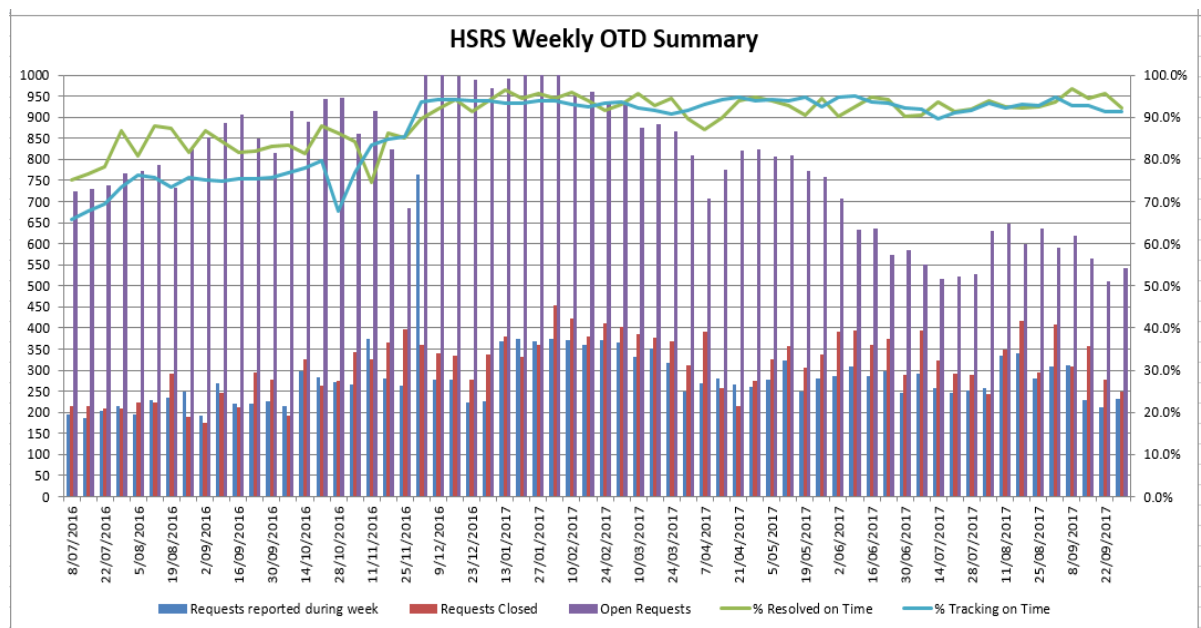
Compliance Delivery Status

Customer Service Requests

The HSRS Department receives service requests from the community in relation to a diverse range of matters including but not limited to animal management, local laws, parking and environmental health. HSRS monitors the volumes and types of service request to identify trends and allocate resources accordingly to provide a high level of customer service to the community.

HSRS Weekly Compliance Activity - Ongoing

The below graph illustrates the week by week monitoring of customer service requests that are processed, investigated and resolved by HSRS staff. The Department continues to monitor the 85% target to resolve requests timeframe through allocating appropriate Council resources to respond to the needs of the community ensuring that the health, safety and wellbeing of the community are protected.



Total requests actioned each month for HSRS

MONTH	Total Customer Service Requests Created	Variance to previous month
Jan-16	1204	↑246
Feb-16	1011	↓193
Mar-16	1029	↑18
Apr-16	1078	↑49
May-16	1032	↓46
Jun-16	1007	↓25
Jul-16	1067	↑60
Aug-16	1238	↑171
Sep-16	1053	↓185
Oct-16	1166	↑113
Nov-16	1317	↑151
Dec-16	1079	↓238
Jan-17	1561	↑482
Feb-17	1403	↓158
Mar-17	1405	↑2
Apr-17	1197	↓208
May-17	1340	↑143
Jun-17	1388	↑48
Jul-17	1199	↓189
Aug-17	1581	↑382
Sep-17	1260	↓321

The increase in the total number of service requests in August includes investigations for littering and dumping from the Kerbside Cleanup project, as well as proactive inspections relating to environmental activities.

Top 10: Customer Service Requests and Volumes for September 2017

The following dashboard highlights the top 10 customer service requests actioned in each Division for **September 2017** with variances from the previous month. Service requests numbers for the top 10 have remained relatively steady.

Roaming Dogs

Ranking

This Month

1

Last Month

1

DIV 1	DIV 2	DIV 3	DIV 4	DIV 5	DIV 6	DIV 7	DIV 8	DIV 9	DIV 10	TOTAL
5	19	9	15	10	5	15	4	8	4	94

Dog Noise Nuisance

Ranking

This Month

2

Last Month

3

DIV 1	DIV 2	DIV 3	DIV 4	DIV 5	DIV 6	DIV 7	DIV 8	DIV 9	DIV 10	TOTAL
9	9	12	13	6	5	7	14	11	1	87

Collection of Impounded Dog

Ranking

This Month

3

Last Month

2

DIV 1	DIV 2	DIV 3	DIV 4	DIV 5	DIV 6	DIV 7	DIV 8	DIV 9	DIV 10	TOTAL
6	12	13	8	5	10	4	9	8	4	79



Unregistered Dog

Ranking

This Month

4

Last Month

6

DIV 1	DIV 2	DIV 3	DIV 4	DIV 5	DIV 6	DIV 7	DIV 8	DIV 9	DIV 10	TOTAL
3	11	8	8	5	7	8	6	15	4	75



Illegal Parking on Footpath

Ranking

This Month

5

Last Month

4

DIV 1	DIV 2	DIV 3	DIV 4	DIV 5	DIV 6	DIV 7	DIV 8	DIV 9	DIV 10	TOTAL
5	8	9	5	4	10	16	9	1	2	69



Dog Attack

Ranking

This Month

6

Last Month

5

DIV 1	DIV 2	DIV 3	DIV 4	DIV 5	DIV 6	DIV 7	DIV 8	DIV 9	DIV 10	TOTAL
2	9	8	10	3	4	4	3	10	9	62

**Abandoned Vehicle****Ranking**

This Month

7

Last Month

8

DIV 1	DIV 2	DIV 3	DIV 4	DIV 5	DIV 6	DIV 7	DIV 8	DIV 9	DIV 10	TOTAL
1	8	6	5	2	4	3	3	15	1	48

**Loan of Cat Trap****Ranking**

This Month

8

Last Month

9

DIV 1	DIV 2	DIV 3	DIV 4	DIV 5	DIV 6	DIV 7	DIV 8	DIV 9	DIV 10	TOTAL
2	4	4	6	3	4	5	5	5	4	42

**Overgrown Private Property****Ranking**

This Month

8

Last Month

10

DIV 1	DIV 2	DIV 3	DIV 4	DIV 5	DIV 6	DIV 7	DIV 8	DIV 9	DIV 10	TOTAL
1	7	5	12	2	4	1	4	6	0	42

**Dog Fencing Issue****Ranking**

This Month

10

Last Month

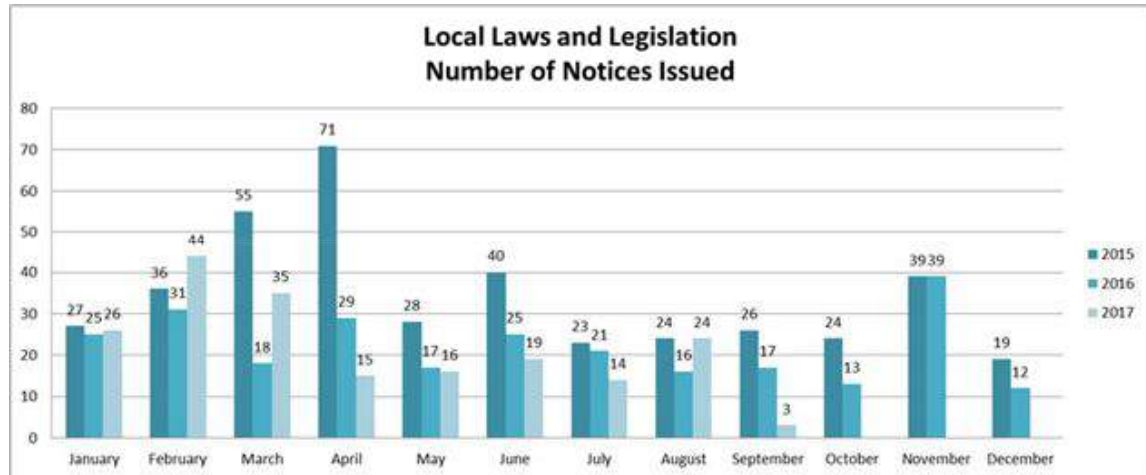
7

DIV 1	DIV 2	DIV 3	DIV 4	DIV 5	DIV 6	DIV 7	DIV 8	DIV 9	DIV 10	TOTAL
5	2	2	7	2	5	3	3	4	3	36

Penalty Infringement Notices (PINs) and Warnings

Local Laws and Legislation – PINs Issued

The HSRS Department issues PIN's and where applicable warnings for a variety of offences under the Local Laws and the *Transport Operation Road Use Management Act*. HSRS issues PIN's and warnings in order to protect the health, safety and wellbeing of the community generally however these are used in conjunction with education and awareness programs to achieve positive outcomes.

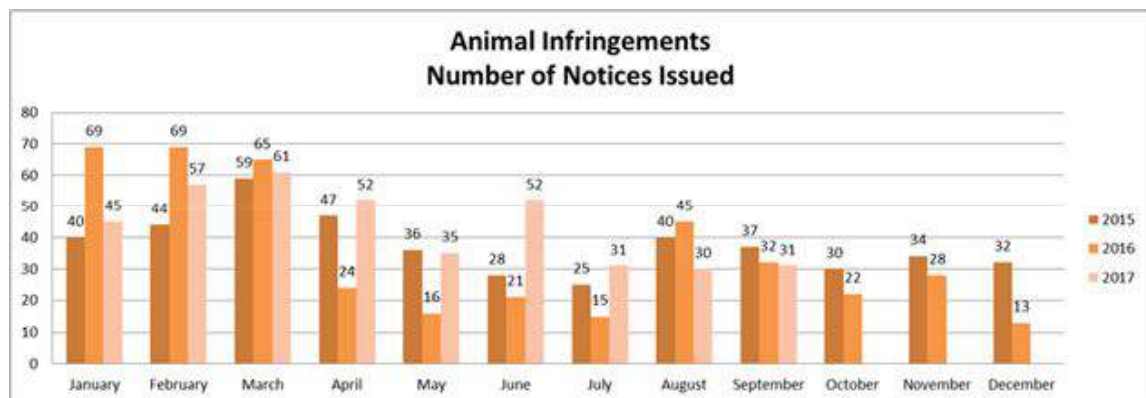


Previous 12 month period (October 2015 to September 2016) total = 281

Current 12 month period (October 2016 to September 2017) total = 260

Summary: Infringement issued remains steady

Animal Management – PINs Issued

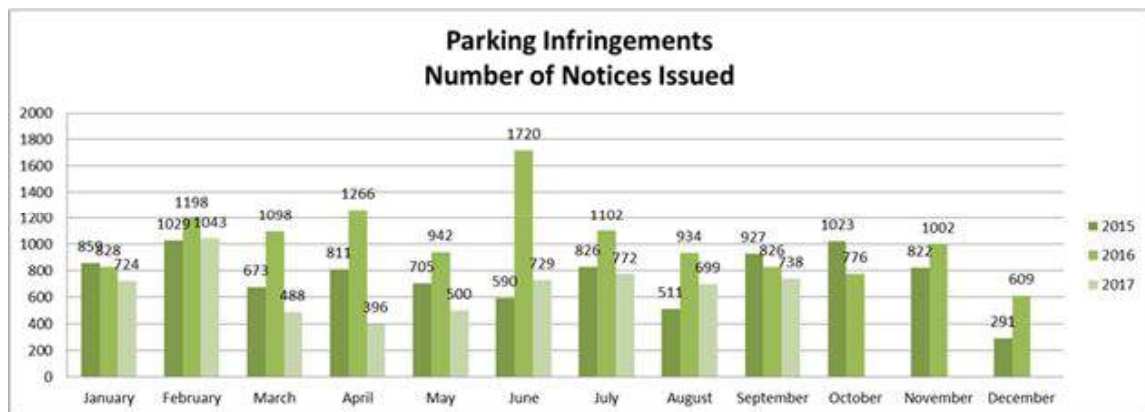


Previous 12 month period (September 2015 to August 2016) total = 452

Current 12 month period (September 2016 to August 2017) total = 457

Summary: The issuing of infringements of this type has remained steady

Parking – PINs Issued



Previous 12 month period (September 2015 to August 2016) total = 12,050

Current 12 month period (September 2016 to August 2017) total = 8,476

Summary: The issue of infringements of this type has remained steady

Parking – Warnings Issued



Previous 12 month period (September 2015 to August 2016) total = 1,468

Current 12 month period (September 2016 to August 2017) total = 591

Prosecutions and Appeals

The HSRS Department completes investigations and briefs of evidence which are forwarded to Council's Legal Branch for consideration of the evidence and public interest to determine the most appropriate course of action. The Chief Operating Officer of HSRS makes the final determination of whether a matter should proceed to prosecution taking into account factors such as the public interest and the seriousness of the offending behaviour. Matters that are investigated and considered for prosecution include complex environmental offences, planning offences and contested PIN's.

List of prosecutions and appeals as of 3 October 2017

<i>Current Register Status</i>	
Investigation (Brief in development)	2
Brief (with Legal Branch)	12
Court	12
Finalised (rolling total)	403
TOTAL	429

Infringement Review requests for September 2017

Division										
1	2	3	4	5	6	7	8	9	10	Total
1	4	8	12	4	3	117	2	5	0	156

Licences, Permits and Design Assessments

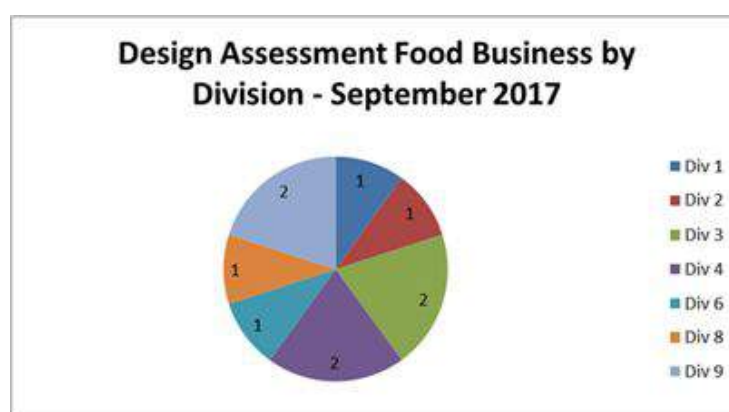
The HSRS Department approve a range of licences (commercial activities) and permits (non-commercial activities) under Council's local laws and State Legislation such as the *Food Act 2006*. Design Assessments are also carried out by HSRS to determine suitability and compliance with standards for fit-outs of various businesses, primarily food business, but also others such as public swimming pools, entertainment venues and high risk personal appearance services (HRPAS) such as tattoo studios. The below represent the licences, permits and design assessments approved by HSRS for **September**.

Licences/Permits

Licence/Permit Type	No. Issued September 2017
Bird Permit (Non-Standard)	1
Cafe / Restaurant	11
Care Facility Meals (Fee Exempt)	1
Child Care Centre Meals	2
Dangerous Dog	2
Domestic Cat Permit	1
Domestic Dog Permit	9
Five Plus Dog Permit	2
Indoor Sports and Recreation Complex	1
Mobile Food Premises involving Preparation	1
Other - Volunteers/Staff/Committees (Fee Exempt)	4
Personal Appearance - Body Piercing	1
Takeaway Food Premises	2
Takeaway Food Premises (Fee Exempt)	1
Temporary Food Stall	1
Temporary Food Stall (One Off Event)	2

Design Assessments

Application Type	Total Approved in September
Design Assessment Food Business	10



Development Compliance Contributions

The below table highlights the Planning and Development fees paid to Council as a result of direct HSRS compliance action.

- Planning fees resulting from operational activities are trending in excess of those achieved in recent years. Building fees and infringements issued are trending below previous years.
- Generally less building issues are being encountered as compliance work carried out over previous years has caused many building issues across the City requiring attention to be resolved. This has also led to less infringements being issued.

Annual figures

	PINS	Applications	TOTAL
2013 Annual Total	\$82,060	\$156,177	\$238,237
2014 Annual Total	\$42,926	\$71,876	\$114,802
2015 Annual Total	\$28,827	\$76,884	\$105,711
2016 Annual Total	\$23,666	\$54,725	\$78,391
4 Year Total	\$177,479	\$359,662	\$537,141

2017 Jan- Mar	\$853	\$8,496	\$9,349
2017 Apr-Jun	\$27,903	\$28,013	\$55,916
2017 Jul-Sept			
2017 Oct-Dec			
2017 Year to Date	\$28,756	\$36,509	\$65,265

Note these figures exclude

- Any infringements waived or transferred to SPER
- Any P&D application fees that were refunded
- Infrastructure payments made as a result of a development application

Summary of April-June 2017:

- 12 Applications to Planning and Development Branch (Incl. Building, Plumbing, Engineering and Planning areas)
- One court outcome infringement
- Two Material Change of Use applications for Type 2 and Type 3 level development for 'Commercial/industrial uses'

Other Program Delivery Status

Immunisation Program

Immunisation is a simple, safe and effective way of protecting against harmful diseases that can cause serious complications.

The immunisation team held promotional days during September at Riverlink and Redbank Plaza Shopping centres to promote school immunisations and community clinics.

Community clinics are held at Priceline Riverlink every second Tuesday 11.00am – 12.00 noon and Redbank Plaza Library on the 1st Thursday afternoon of each month.

Third round school clinics commenced 31st August.

September Clinics

Type	Individuals Treated	Immunisations Issued
Community Clinics	50	125
Schools (catch-ups)	37	39
School Clinics	548	548
Special Projects (seasonal flu vaccinations)	--	--



Health and Amenity Plan

The Health and Amenity Plan 2017/2018 identified a number of exciting initiatives that will be rolled out over the coming financial year. An update on some of are provided below.

#BARKATHON17 – EARLY DECEMBER 2017

Barking dog complaints represent one of the largest service request types for Ipswich City Council with traditional processes being resource intensive. We are treating the problems on a singular basis and therefore results tend to be inconsistent or short lived. Our aim is to discover and develop a solution that will benefit dog owners, their neighbours and the wider community through technology and innovation. An ideation night (Tues 28 November) and a weekend hackathon will be held at Firestation 101 early in December (1-3 December). This will be a unique opportunity to hack a solution and for someone to start a new business. Firestation 101 will facilitate and host the event along with Council staff. The call to action for the entrepreneurial community has commenced.

What else can we do to make customer's lives better, aligning with our purpose of enriching quality of life? Are there new ways to capture grievances? What tools can we put in the hands of our residents? Is there new technology, platforms, or applications we can introduce that would make it easier for customers? How can our systems help make people in our cities more livable, connected, and enabled?

*#Barkathon17
Ipswich City Council*

REGISTRATION REWARDS PROGRAM 2018/2019

The Registration Rewards Program will be going digital in 2018 with an application to be designed and developed for Council to enable registered dog owners to access more vouchers and businesses than ever before. The application will provide a platform for businesses to craft their vouchers and offers in more flexible ways and for Council to push reminders, key messages and words of thanks out to our registered dog owner community. The first year we will run the digital application as well as an 'opt in' process for those dog owners who want the current paper voucher book.

ONLINE STORY TELLING - LEASH TAG AND CARRY BAG

Council is about to release three new videos that have been filmed to promote Council's three key messages of walk your dog on public with a **leash**, ensure your dog has its registration **tag** on, and always have a **carry bag** for your dog's waste when out and about.

In FY 2016-17 there were 29,580 registered dogs and it is estimated that there are still over 10,000 unregistered dogs in Ipswich. The Leash, Tag and Carry Bag Campaign aims to educate owners on their responsibilities as a dog owner and also consider the impact of irresponsible dog ownership to others.

This campaign has wrapped the 'serious' messages in humour, with the aim being to alter public perception and focus on education, rather than compliance.

The video campaign details are:

Target Audience: Ipswich residents; Dog owners; Aged 18 to 64; Target areas with highest number of dog related complaints received by Ipswich City Council.

Dissemination of videos and associated promotion will occur between October and December 2017(note: the below campaign can be repeated again at a later date):

- Digital media campaign via YouTube TrueView allowing us to target, track and optimise towards the target audience. Trueview ads are designed to ensure viewers see videos they are interested in, and you receive views from an audience you know are engaged with your message. (Total estimated targeted views of 50,000.) **TrueView are the ads that play before you watch a video on YouTube.*
- Social media campaign using Council owned assets, including Facebook and Instagram. Boosted posts to increase views (total estimated views of 15,000).
- Social influencer with featured cat in video series to share with followers (approximately 173,000 followers).
- DL flyer distribution to areas identified as having the highest number of dog related complaints (approximately 26,378 households).
- EDM campaign to database of registered dog owners with registered emails (estimated database of 7,500 owners).

All the above represents a **potential reach to just over 250,000 people** without anyone even sharing the videos and 'going viral'.

The videos will also be made available on Council's website and will be available for Councillors to use in Divisional communications.

BEST FRIENDS FOREVER – CHILDRENS BOOK

Council staff have written a resource that has been professionally edited to help children in kindergarten and prep learn about responsible pet ownership and our key messages of 'Leash, Tag and Carry Bag'. The book will show young Lucy's story of how she is allowed to adopt a pet dog from the local adoption centre and what she needs to do as its guardian and best friend forever. The books will be colourfully illustrated. The books will be printed shortly for distribution by HSRS staff at key education events such as the AVA Pet Pep program. Councillors will be advised when the print order is being finalised in case you wish to purchase additional copies for distribution from Divisional Office (eg Christmas gifts for kindergarten schools or other special Divisional events).



Ipswich City Council
45 Roderick Street
PO Box 191, Ipswich
QLD 4305, Australia

Tel (07) 3810 6666
Fax (07) 3810 6731
council@ipswich.qld.gov.au

Join us online on:



Health, Security and Community Safety Committee	
Mtg Date: 10.10.17	OAR: YES
Authorisation: Sean Madigan	

Objective ID: A4372258

3 October 2017

MEMORANDUM

TO: CHIEF OPERATING OFFICER (HEALTH, SECURITY AND REGULATORY SERVICES)

FROM: PRINCIPAL OFFICER (PROJECTS)

RE: KERBSIDE DUMPING - PROGRESS REPORT

INTRODUCTION:

This is a report by the Principal Officer (Projects) dated 3 October 2017 concerning the August results of pro-active intervention in relation to kerbside dumping.

BACKGROUND:

As outlined in Item 2 (**Attachment A**) to the Health, Security and Regulatory Services Committee of 12 September 2017, changing behaviours in relation to incidents of kerbside dumping is one of the key objectives of the Littering, Dumping and Waste Reduction Campaign (the Campaign) between the Department of Environment and Heritage Protection (DEHP) and Ipswich City Council (Council).

Staff within the Works, Parks and Recreation Department (WPR) do an exceptional task at keeping costs reduced with regard to the removal of illegal dumping. Generally, contract staff are utilised to remove illegal dumping and dispose of it at Council's waste facility. To minimise costs, contractors are only engaged when a number of requests have been identified where their services are required.

On average, the cost to Council of engaging a contractor to remove illegal dumping and dispose of the waste is **\$65.60 per request**¹. This cost excludes Council internal charges in relation to organising the contractor, inspecting sites, invoicing, fleet costs and the like.

¹ Costs are based on data available for July – August 2017 regarding illegal dumping removal organised by WPR.

RESULTS:

During the month of August, 112 service requests were identified which related specifically to the dumping of material on the kerbside. In some cases this was material that people placed on the kerbside after the kerbside collection service or the material was something that Council had notified residents that it would not collect (e.g. tyres).

92% of the service requests (103 requests) were resolved by the illegal dumping being removed pro-actively by the person who dumped it.



This result was achieved by engaging with the public through one on one conversations, letters, taping of the kerbside dumping with 'illegal dumping tape' and the placing of information flyers in letterboxes. In some cases more than one action was required however, the end result of people removing their illegal dumping was achieved overwhelmingly.

Based on the average costs to Council to remove illegal dumping, this result represents a **saving of \$6,756.80** for the month of August or a **potential saving of \$81,084.60** when extrapolated over the financial year.

CONCLUSION:

The Campaign established between DEHP and Council is specifically designed to change behaviours. Although the Campaign is still in its early stages, initial results appear to suggest that behaviour change within the community is achievable which will improve the amenity of the City.

ATTACHMENT:

Name of Attachment	Attachment
Littering, Dumping and Waste Reduction Campaign – Grant Deed Milestone Report	Attachment A

RECOMMENDATION:

That the progress report regarding kerbside dumping be received and noted.

Graham Schultz
PRINCIPAL OFFICER (PROJECTS)

I concur with the recommendation contained in this report.

Sean Madigan
CHIEF OPERATING OFFICER (HEALTH, SECURITY AND REGULATORY SERVICES)

Objective ID: A4336773

Health, Security and Regulatory Services Committee	
Mtg Date: 12.09.17	OAR: YES
Authorisation: Sean Madigan	

29 August 2017

MEMORANDUM

TO: CHIEF OPERATING OFFICER
(HEALTH, SECURITY AND REGULATORY SERVICES)

FROM: PRINCIPAL OFFICER (PROJECTS)

RE: LITTERING, DUMPING AND WASTE REDUCTION CAMPAIGN - GRANT DEED
MILESTONE REPORT

INTRODUCTION:

This is a progress and financial update report by the Principal Officer (Projects) dated 29 August 2017 concerning the Grant awarded to Ipswich City Council (Council) by the Department of Environment and Heritage Protection (DEHP) in relation to the Littering, Dumping and Waste Reduction Campaign (the Campaign).

BACKGROUND:

The Grant Deed between Council and the DEHP required that a progress and financial update report be submitted by 25 August 2017 which outlined the summary of work undertaken to date in relation to the collection of baseline data for the four behaviours identified within the Project Plan of the Campaign:

1. Roadside Littering
2. Illegal Dumping – Suburban and rural areas
3. Illegal Dumping – Kerbside
4. Recycling contamination trial

This report is an overview of the information that was provided to the DEHP.

PROGRESS REPORT:

1. Roadside Littering

Litter Audits:

Litter audits have been conducted at 24 sites throughout the Council area and a total of 6,311 pieces of litter were collected. The largest individual item count was broken glass at 1,772 pieces however 1,000 of these are attributed to a motor vehicle accident located at a single roadside audit site. The next most common item counted was cigarette butts which were located at every audit site and totalled 863 items. Cigarette butts were very common in car parks which were associated with sporting fields or parks and these findings should enable some targeted education.

The audit sites consisted of the following:

- Truck stops/pull over areas;
- Car parks associated with a park with sports infrastructure or a sporting field;
- Road sides near a park or sporting field area;
- Courts or similar sporting infrastructure within a park;
- Roadsides in industrial or non-residential areas.

Community Champions:

Enquiries have been made to identify people within the community who proactively collect litter voluntarily (individually and/or as part of a community group) with the aim of promoting their activities.

Numerous programs exist which encourage/promote people to proactively collect litter during their day-to-day activities and positive messaging and reinforcement of this concept will help reduce visible litter in the community and reduce occurrences of littering due to the improved amenity of the area.

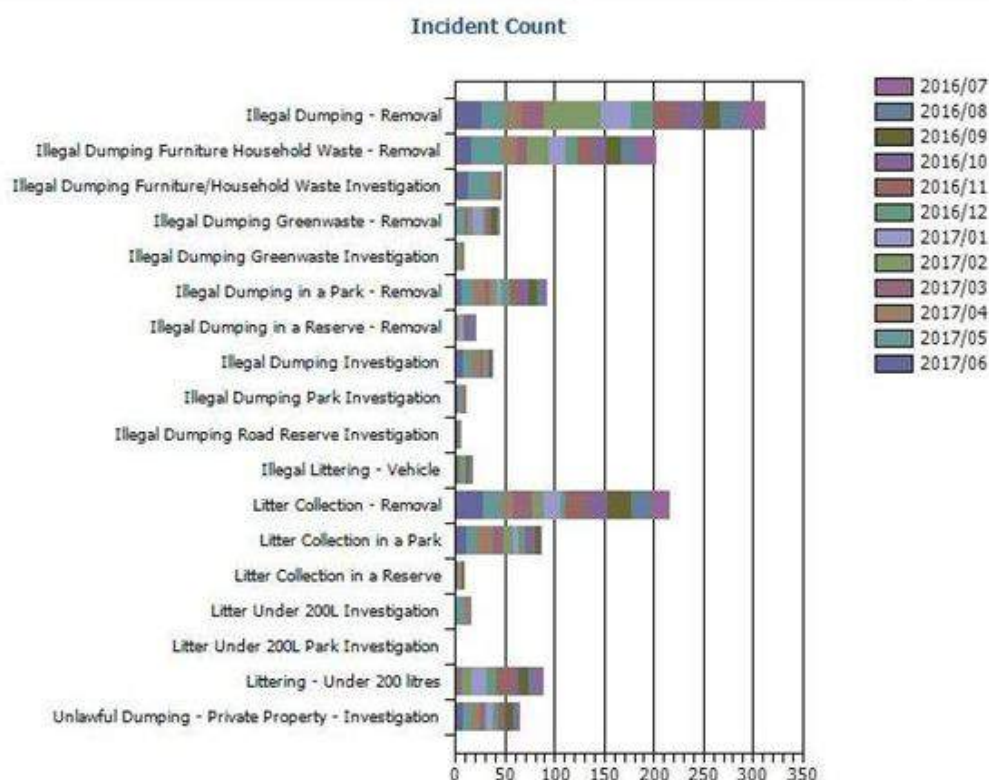
To date, 24 adults and approximately 20 school aged children have been identified across the Council area.

2. Illegal Dumping – Suburban and rural areas

During the period of 1 July 2016 to 30 June 2017, 1,288 service requests were generated by Council in relation to littering or dumping. As outlined in the below table (**Request Code**), the requests were separated into several categories however can be broadly categorised into investigations and requests for collection/removal.

Of the 1,288 requests, 300 requests related to investigations and the remaining 988 were for the collection or removal of litter and illegal dumping.

Request Code



A large number of the investigations failed to identify an offender and during the same reporting period only 14 infringements were issued by Council in relation to littering and illegal dumping. This low number of infringements is largely attributed to reduced numbers of Officers available to install and monitor cameras in covert locations at known dumping hot spots.

3. Illegal Dumping – Kerbside

As indicated above, Council received a large number of requests to collect or remove illegal dumping within the community. A large number of these requests relate to items that are illegally placed on the kerbside.

A new strategy has been established for officers to proactively take action when items are illegally placed on the kerbside. They wrap the items in illegal dumping tape and place an illegal dumping information flyer in letterboxes of the nearby properties. If the offender is identified, compliance action is taken.

Wrapping the items in tape highlights that action has been taken by Council and that this activity is not permitted, it's illegal. It also signifies to passers-by that items left on the footpath are not part of a coordinated kerbside collection service and have been illegally dumped. The tape is a form of communication with the aim of reducing 'copycat' dumping.

In the majority of cases where this strategy has been applied, the illegally dumped items were removed from the kerbside pro-actively within two days.

4. Recycling Contamination: Bin Tagging Trial

As previously reported to Council, contamination levels within the Council kerbside recycling service continue to be high and are unfortunately increasing. Over the period of October 2013 – September 2016, average contamination levels have ranged from 14.4% to 38.4%. The following table details the contamination levels that have been identified during controlled examination periods.

Table 1: Basket of Goods calculations (October 2013 – September 2016)

Quarter	Contamination level %	Tonnes processed
Oct - Dec 13	18.0	3,134
Jan - Mar 14	14.4	3,050
Apr - Jun 14	14.4	2,940
Jul - Sep 14	14.4	2,918
Oct - Dec 14	19.2	3,354
Jan - Mar 15	18.2	3,310
Apr - Jun 15	23.4	3,096
Jul - Sep 15	20.2	3,041
Oct - Dec 15	25.8	3,550
Jan - Mar 16	25.8	3,373
Apr - Jun 16	25.8	3,298
Jul - Sep 16	38.4	3,426

There is significant research available on the issue of managing recycling contamination in Australia and internationally. It was found that there is no uniform national acceptable level of contamination for kerbside recycling services in Australia and that a wide variation in contamination levels are reported. However, average contamination rates appear to be 7-10% and reducing contamination to between 0 -10% appears to be the generally accepted goal throughout Australia.

Ipswich City Council propose to trial recycling bin tagging within two key suburbs where recycling contamination levels are the highest to determine if the method is a cost effective option for contamination reduction throughout Ipswich. The outcome of the trial should inform council on the way forward for the commingled recycling service taking the lessons learnt from other parts of the world into account.

COMMUNITY EDUCATION:

Founded on the baseline data that has been gathered, a marketing plan is to be established which will address the four key elements of the Campaign. This plan will target key activities that are likely to have the most profound effect on reducing instances of littering, illegal dumping and recycling contamination.

Education will also be undertaken internal of Council to promote the Campaign and to encourage Council staff to take positive action in line with the Campaign objectives wherever possible.

FINANCIAL UPDATE:

Below are the details of expenses¹ that have been incurred which are directly related to the Campaign. In kind support from the DEHP and Council labour costs have not been included.

Printing of illegal dumping tape for kerbside dumping	\$2,249.61
Printing of information flyers for kerbside dumping	\$ 418.80
Litter grabbers (nifty nabbers)	\$ 994.80
Litter collection volunteer vests	<u>\$1,518.00</u>
TOTAL:	\$5,181.21

Additional expenses that are likely to be incurred in the short term will be the costs associated with the installation of information signs on the major road corridors and the production of 'Report It' booklets.

CONCLUSION:

The Campaign has been well received by community members who have been involved in the establishment stage. The Campaign continues to gather momentum and once the marketing component is delivered, it is envisaged that significant changes and improvements within Ipswich will be evident.

RECOMMENDATION:

That the report be received and the contents noted.

Graham Schultz

PRINCIPAL OFFICER (PROJECTS)

I concur with the recommendation contained in this report.

Sean Madigan

**CHIEF OPERATING OFFICER
(HEALTH, SECURITY AND REGULATORY SERVICES)**

¹ Amounts are inclusive of GST charges

KG:KG
A4060592

Health, Security and Community Safety Committee	
Mtg Date: 10/10/2017	OAR: YES
Authorisation: Sean Madigan	

27 September 2017

MEMORANDUM

TO: CHIEF OPERATING OFFICER – HEALTH SECURITY & REGULATORY SERVICES

FROM: MANAGER – ANIMAL MANAGEMENT OPERATIONS

RE: ANIMAL MANAGEMENT FACILITY UPGRADE

INTRODUCTION:

This is a report by the Manager, Animal Management Operations dated 27 September 2017 concerning a proposal to upgrade the current Animal Management facility situated at 6 Hooper Street, West Ipswich.

BACKGROUND:

Investigations concerning the progression of an upgrade to Council's impound and rehoming facility at the Hooper Street site commenced in November 2016.

OPTIONS:

Initial enquiries confirm no alternate site or scope for an upgrade or redevelopment of Council's animal management facilities exists. Enquiries and recommendations in the attached proposal are restricted to re-use of the current Hooper Street site and some supporting infrastructure.

BENEFITS TO COMMUNITY AND CUSTOMERS:

The current animal management centre struggles to provide adequate facilities commensurate with impound and rehoming numbers. The older site buildings are compromised by a combination of age and repeated water and flood damage.

ATTACHMENT/S: (if applicable)

Name of Attachment	Attachment
Impound Facility Redevelopment 2017	Attachment A

RECOMMENDATION:

That the recommendations contained in Attachment A of the report, by the Manager, Animal Management, be adopted, that is:

- A. Council obtain cost estimates for redevelopment of the Hooper Street site;
- B. Cost estimates should be based on a progressive redevelopment inclusive of all structural additions/amendments represented in Concept C.

Kylie Goodwin

MANAGER – ANIMAL MANAGEMENT OPERATIONS

I concur with the recommendation/s contained in this report.

Sean Madigan

CHIEF OPERATING OFFICER – HEALTH SECURITY & REGULATORY SERVICES

Animal Management Facility


Building and Redevelopment Project Proposal





Table of Contents

Project Management Plan version control	3
1.0 Introduction.....	4
1.1 Purpose of document.....	4
1.2 References.....	4
2.0 Background.....	4
3.0 Project details.....	5
3.1 Stakeholders.....	6
4.0 Scope of program	6
4.1 Description	6
4.2 Objective	7
4.3 In scope	7
4.4 Out of scope	7
4.5 Constraints	7
4.6 Assumptions	8
5.0 Project budget- estimates	8
6.0 Project milestones.....	8
6.1 Critical project milestones.....	8
7. Research Data.....	8
8. Opportunities	12
9. Recommendations	12



Project Management Plan version control

Version	Description of Change	Updated By	Date
0.1	Draft	Kylie Goodwin	07/08/2017
0.2	Edit	Sean Madigan	03/10/2017
0.3			

Document Approval

Name	Approval Date
Sean Madigan	03/10/2017



1.0 Introduction

1.1 Purpose of document


The purpose of the Project Proposal is to demonstrate feasibility, requirement, and desirability relative to progression of a new animal management facility to service the local government area of Ipswich. The Proposal explores redevelopment of the existing Hooper Street site at West Ipswich in the absence of an identified alternative. The Proposal considers historical data as well as projected community requirements and desired outcomes.

1.2 References

- Lynskey Structural Consultant's Report – 25 October 2011
- Brand and Slater Architects, Concept Drawings – March 2017
- RSPCA concept drawings
- Ipswich City Council Impound and Release Data – 2010 – 2017
- Ipswich City Council Cat and Dog Management Plan – 2010-2013
- Ipswich City Council Animal Register – 2010-2017
- AWLQ Rehoming Statistics – 2012-2016
- RSPCA Rehoming Statistics – October 2016- Current
- Ipswich Regional Statistics – 2017
- 1974 Flood line mapping
- 2011 Flood line mapping

2.0 Background

The Ipswich City Council Animal Management Centre 6 Hooper Street, West Ipswich. The site includes impound and animal rehoming facilities, office areas, customer service counter, and RSPCA on site shop and office. The RSPCA operate rehoming activities from the site, and are contracted to Council as a service provider for care of impounded animals. Community based activities including micro-chipping, de-sexing, and associated services are also scoped in the contract.



The Animal Management Centre has capacity to hold 35 impounded dogs, with a further 8 kennels in its 'Hold' area, for dangerous or high risk dogs. The rehoming kennels have a capacity of 27 kennels.

The impound cattery has a varying capacity but in general terms can accommodate up to 40 cats comfortably. The rehoming area consists of free roaming rooms therefore numbers vary. The facility also has twelve operational drop boxes for after hours and weekend use, poultry cages, six day yards for dogs, and a set of cattle yards adjacent to open paddock areas.

The site is flood prone and sustained significant damage in the 2011 flood event. The original buildings are over 20 years old, with an upgrade to the site completed in 2012 comprising of an extension to the old kennel complex, which currently accommodates rehoming; a new cattery rehoming area, some addition and minor improvement to outdoor areas and yards; installation of drop box facilities; and the addition of shed type storage.

The facility has been subject to two further flood events, one in February 2013, and the other in April 2017. No significant damage to infrastructure or assets occurred with either event but the site had to be evacuated during both.

Council embarked on a service provider contract, the first of its kind for the region, with the Animal Welfare League of Queensland in 2012. The contract expired in 2016 and the RSPCA was subsequently appointed after the contract went to public tender. The service provider is responsible for most site operations, care of impound animals, and facilitation of a rehoming program. The predominant outcome in seeking and utilising a welfare organisation for pound services is to increase rehoming rates, support Council animal management service delivery, and reduce euthanasia rates in healthy animals. The current condition of older buildings has presented challenges for Council and both external service providers.

3.0 Project details

Project Name	Animal Management Facility Proposal
Project Short	Create a value proposition to develop new Animal Management Facilities

Project Name	Animal Management Facility Proposal
Description	that recognise the expectations of the community, meet operational needs, and promotes care and respect of our domestic animals and livestock.

3.1 Stakeholders

Key stakeholders and how they will be engaged in the Proposal and Project are identified in the table below:

Stakeholder	Keep informed	Consult	Approver and Decision Makers
CEO and CFO	√	√	√
Heads of Department – IS/HSRS/WPR	√	√	√
Branch Managers - HSRS	√	√	
Contract Service Provider - RSPCA	√	√	
Employees - ICC	√	√	
Employees - RSPCA	√	√	
Councillors	√	√	√

Although the service provider agreement is changeable, the RSPCA should play a consultative role given their industry expertise and experience in redeveloping and building commensurate facilities.

4.0 Scope of program

4.1 Description

Summary	Create understanding of the requirements and importance of a new animal management facility. Development of the project plan
----------------	---

Actions	<ul style="list-style-type: none"> • Define capacity requirements • Develop a site plan that considers operational impact • Consider the feasibility of inclusion of an on-site veterinary clinic • Strategize an ROI relevant to private impound capability • Identify business opportunities • Pursue cost estimates
Dependencies	<ul style="list-style-type: none"> • Feasibility Analysis • Capital Budget
Costs	TBA
Sustainability	The proposal considers future needs, site capability, flood mitigation, alternate use of available infrastructure, waste and energy efficiencies.

4.2 Objective

Outcomes	Delivery of a new animal management facility that reflects the operational requirements and capacity required to adequately maintain domestic animals and livestock within the LGA.
-----------------	---

4.3 In scope

The following activities are considered within the scope of this proposal:

- Review and assessment of the current Hooper Street site;
- Review and assessment of the Brand and Slater concept options;
- Cost estimates based on incremental development
- Operational impact assessment and contingency

4.4 Out of scope

- Alternate site identification

4.5 Constraints

- Resourcing
- Time frames

4.6 Assumptions

- Project can be delivered in defined time frames
- Capital funding is available
- Business impact can be mitigated

5.0 Project budget- estimates

Costs estimates associated with this project are:

Task/ Activity	Notes
Final concept, planning	
Civil works	
New building costs	Including materials and fit out
Costs associated with re-fit of older buildings	Including materials and fit out
Incremental costs	Costs associated with an incremental development including operational contingency costs

Costs will be incurred across the 2017-2020 financial years.

6.0 Project milestones

6.1 Critical project milestones


Phase	Required completion date
Planning and design	TBA
Building and development plan	TBA

*Note projects will commence and conclude at different times during this period

Further milestones to be scheduled via the development of the project plan.

7. Research Data

The recommendations are based on observations derived from various data sources and projections.



The 'Lynskey Report', procured by Council in 2011, sets out various deteriorations as part of a structural engineering assessment on the pound buildings. The concrete slab in the main kennel area remains in poor condition, with some repair of extensive cracking occurring on an ad hoc basis. Rectification and sealing of the slab as per the recommendations was not undertaken. The slab therefore remains compromised, displaying further cracks and potential water seepage due to the wet area work conditions.

Some cracking in the masonry walls in the old kennel building was also identified as well as structural steel corrosion. This type of deterioration was consistent with the age and use of the building, but the recommendation was that the areas required repair.

The current animal management facilities are old, damaged in some areas, with limited ability to apply conservative renovation or aesthetic value. Given the age of the facilities, disease control and welfare issues are difficult to overcome without a complete refit. Some minor additions such as physical barriers have made a slight impact on kennel cough, but cat disease, predominantly feline influenza, is extremely difficult to control within current facilities due to lack of space and quarantine areas.

Within a kennel/cattery environment, the transmissibility of disease between one animal and another is able to be managed through good hygiene practices of animal attendants and kennel/cage design.

Hygiene practices have remained reasonably stable over the past decade, although there has been substantial advancements in kennel and cage design that reduces the transmission of disease between one animal and another. These advancements focus on reducing animal stressors and the amount of physical contact between cages.

While the Ipswich facility provides separation between cats and dogs, there is still the ability for the transfer of pathogens directly (faeces, bodily fluids etc.) between dogs cages and airborne pathogens between both dog and cat cages (sneezing, coughing, dust etc.).

This is evidenced through RSPCA treatment data, where 401 consultations for impounded cats suffering from Feline Influenza and 41 consultations for impounded dogs suffering from kennel cough. These specific cases are a snapshot of the 3,545 consultations that were undertaken by the RSPCA from 1 January 2017 to 30 June 2017.

Modern facility design may assist Council and the RSPCA in reducing the number of diseases that are transferred from one animal to another within the Ipswich City Council Pound, which in turn reduces resources for both organisations and increases viability of rehoming animals.

In addition to concerns about the integrity of the older buildings, increases in impound animals, population, and approved dwellings in the Ipswich region indicate the current impound facility is inadequate.

Impound data between, 2010 and 2017 indicates increases in animal intake. While branch activities have focused on alternatives to impound, the increases in service requests broadly for the same period also contribute to increasing impound numbers.

Year	Animal Impound Total	Percentage change
2012/2013	4146	
2013/2014	5299	Increase of 27.8%
2014/2015	5826	Increase of 9.94%
2015/2016	5943	Increase of 2%
2016/2017	4762	Decrease of 19.87%

*Ipswich City Council Pathway Data

Given the population increase and rise in dwelling approvals within the LGA, dog and cat ownership will continue to increase.

Year	Population	Percentage Change
2006	139,109	
2011	166,903	19.98%
2016	193,733	16.07%

*ABS Data





Dwellings:

Year	Separate House	Semi detached	Flat/unit/apartment	Total	Percentage change
2006	45,094	1668	1928	49,228	
2011	52,976	3090	1875	58,460	18.75%
2016	60,097	5922	1107	67,725	15.84%

*ABS Data

**Total includes improvised housing, caravans, and combined business residences

Source	Link
1. Lyskey Structural Engineering Report – 25 October 2011	 Attachment 1.A Structural Engineering Assessr
2. Impound Data – 2010 - 2017	 Attachment 2.A Animal Impoundment Repo  Attachment 2.B Animal Impoundment Repo  Attachment 2.C Animal Impoundment Repo  Attachment 2.D Animal Impoundment Repo  Attachment 2.E Animal Impoundment Repo
3. Ipswich Statistical Data – ABS 2006/2011/2016	 Attachment 3.A ABS Dwelling Data Pack_Time Series Pro
4. Brand and Slater – Concept plans 2017	 Attachment 4.A 20160166 Ipswich Pound Redevelopme  Attachment 4.B 20160166 Ipswich Pound Redevelopme  Attachment 4.C 20160166 Ipswich Pound Redevelopme
5. RSPCA – Concept Drawing	 Attachment 5.A 08082017142000-00 01.pdf

6. Flood mapping	 Attachment 6.A 1974 flood line 1.pdf  Attachment 6.B 2011 flood line 1.pdf
7. Cat disease data	 Attachment 7.A Cat treatment data.xlsx
8. Dog disease data	 Attachment 8.A Dog treatment data.xlsx

8. Opportunities

1. Renovation of the existing new kennel facilities, currently used for rehoming, provides a commercial opportunity for private boarding. The incumbent service provider, RSPCA, has indicated an offset of between \$200,000 to \$250,000 per annum is achievable.
2. An automated dog wash system on the site could provide return as an offset (via the service provider), as a revenue stream, or in a community fundraising capacity on a shared basis.
3. An on-site vet clinic presents further opportunities for an offset, by developing the building and infrastructure, and leasing back to the service provider. The internal fit out of the vet clinic may be owned by Council or the service provider.

9. Recommendations

1. Council obtain cost estimates for redevelopment of the Hooper Street site;
2. Cost estimates should be based on a progressive redevelopment inclusive of all structural additions/amendments represented in Concept C;

Our Ref: 110803-O-001
Your Ref:

IMU RECEIVED

LG 5.52
T

LYNSKEY
Structural Consultants

28 OCT 2011

B. HINES

cc A. DEVANTIER

25 October 2011

Ipswich City Council
Level 4, Hayden Centre
37 South Street
Ipswich
QLD 4305

ATTENTION: Andrew Devantier

Dear Sir

STRUCTURAL ENGINEERING ASSESSMENT REPORT ON THE CONDITION OF THE EXISTING DOG POUND BUILDING AT IPSWICH CITY COUNCIL POUND

1. INTRODUCTION

Further to your request, an engineer from this office carried out an inspection of the abovementioned building on 5 October 2011.

The aims of this inspection were as follows:

- ▶ To visually assess the condition of the building.
- ▶ To visually assess the extent of any existing structural defects.
- ▶ To provide comment on the probable causes of any existing structural damage.
- ▶ To provide comment on possible rectification procedures.

It should be noted that we have had no prior involvement in the design or construction of the building. Our inspection was visual only. All roof, ceiling and wall cladding elements were in place at the time of the inspection. We are only able to comment and draw conclusions on the basis of the visual evidence available to us, and our general knowledge of building construction and generally applicable site conditions in the area.

Contained herein are the findings of our investigations.

2. BUILDING DESCRIPTION

The building is approximately 20 years old and is of single storey steel framed construction, with the steel framed roof structure supported on perimeter block walls and internal steel columns.

Drawings referenced 71233 to 71236 for the building have been provided for our review, the drawings indicate that the construction of the building is to be split into 2 stages and the structure outlined on these drawings with the structure for each stage being the same and may be generally summarised as follows:

- | | |
|------------------|--|
| ▶ Roof | Sheet |
| ▶ External Walls | 190mm thick blockwork |
| ▶ Internal Walls | 190mm thick blockwork |
| ▶ Structure | Steel framed structure, Z150 purlins supported on 150 UB rafters and 100 SHS columns. |
| ▶ Ground Floor | 100 thick concrete slab |
| ▶ Footings | 300 wide x 600 deep concrete strip footings to walls
450 square x 300 deep concrete pad footings to posts |

LYNSKEY Structural Consultants Pty Ltd

38 Hannah Street, Mt Ommaney, QLD 4074
PO Box 295, Mt Ommaney, QLD 4074

ACN 107 130 192

Tel (07) 3279 4909
Fax (07) 3279 4906
email colin@lynskey.com.au

3. INVESTIGATION

Based upon our visual inspection of the building we have the following observations:

3.1 General

As shown on the original drawings supplied to us, the building appears to have been built in 2 stages, with the structural layout for stage 1 being consistent with the layout shown on the drawings. However stage 2 of the building has a different structural layout than stage 1 and also different than that shown on the drawings.

The stage 2 structure comprises 'C' section cold formed rafters at 900 centres spanning between 'C' section ridge and eaves beams, and steel sheet clad walls rather than block walls as shown on the plans, and a steel framed shade structure has been erected to the front of this section of the building.

The original building has now been extended to the rear with a new steel framed and clad structure which appears to only recently been completed.

3.2 Steel roof and wall sheeting

The steel roof and wall sheeting to both stages of the building was visually inspected from the interior and exterior of the building and we comments as follows:

- ▶ The sheeting appeared in reasonable condition for the age of the building.
- ▶ Small areas of surface corrosion were visible at some of the fixing points on the roof of stage 1 of the building.
- ▶ The corrosion appears to be due to normal deterioration of the sheeting due to age.

3.3 Masonry walls

The masonry walls to the building were visually inspected from the interior and exterior of the building and we comments as follows:

- ▶ The walls are generally in reasonable condition for the age of the building.
- ▶ The walls are articulated with full height joints at regular centres along the length of the walls.
- ▶ Stepped hairline to 1mm wide cracking to the right side elevation of the building in 2 locations near to the front personnel access door. The cracking is visible on the outer and inner faces of the wall.
- ▶ The cracking appears to be due to minor differential movement of the footings to the wall due to normal seasonal variations in the moisture content of the founding soils.
- ▶ The defects recorded are classified as between Damage Category 1 and 2 in accordance with AS 2870 – 1996 which are not of structural concern and easily rectified.

3.4 Steel Structure

The steel structure was visually inspected from the interior of the building and we comments as follows:

- ▶ The steel structure to both the stages of the building appeared to be in reasonable condition for the age of the building.
- ▶ Surface corrosion was noted to some areas of the main steel structure to stage 1 of the building.
- ▶ All purlin and cold formed sections are galvanised and appeared adequate and in serviceable condition.
- ▶ The corrosion appears to be due to normal deterioration of the steel due to age and the generally moist conditions within the building.

3.5 Concrete floor slab

The concrete floor slab was visually inspected from the interior of the building and we comments as follows:

- ▶ The floor slab is cracked in numerous areas which have been previously repaired and sealed, and in some instances are re-cracking.
- ▶ The original cracking to the floor slab appears to be due to a combination of shrinkage of the slab and differential movement of the founding soils due to seasonal variations in the moisture content.
- ▶ The cracking has allowed moisture to ingress into the slab from the continual cleaning and hosing down of the floor, which is causing some corrosion of the reinforcement of the slab and worsening the cracking and will result in surface spalling, signs of which are beginning to be visible in areas of the slab.
- ▶ The cracking is of structural concern and rectification will be required to prevent further deterioration of the slab and corrosion of the reinforcement.

4. CONCLUSIONS

Based upon our inspection of the building we confirm that the overall structural integrity of the building is sound. The superstructure is in reasonable condition for the age of the building with only minor maintenance works required to keep the structure in a serviceable condition.

The footings and ground slab to the building are in poor condition with extensive cracking visible to the top surface of the slab and signs of footing movement present. It appears from the original drawings provided that the slab to the building is integral with the footings and therefore designed as a raft system, however no thickening beams have been provided to the slab leaving the slab prone to movements due to heave or settlement of the founding soils.

In order to stiffen the slab sufficiently to prevent the potential movements additional stiffening beams would need to be provided through the slab at regular centres in both directions, this would require the demolition of most of the slab and as the slab is integral with the footings would be a difficult and extremely costly exercise and possibly more expensive than demolishing and re-building the entire building.

A second option in these situations is to provide joints through the slab to allow movement of the slab without cracking, however in this case as the slab is designed as a raft system integral with the footings this would remove the structural integrity of the system. It could also result in moisture from the continual hosing down of the floor getting beneath the slab through the joints changing the moisture content of the founding soils and adding to the potential movement of the soil and therefore the slab.

Therefore in our opinion the only practical solution is to rectify the current cracking to the slab and provide additional waterproofing to help prevent water penetrating into the slab, and to reduce the potential further movement of the founding soils by reducing the seasonal variation in the moisture content and improving the site maintenance in order to prolong the life of the building.

5. RECOMMENDATIONS

5.1 Masonry Walls

The movement to the block walls at present can be classified as between Damage Category 1 and 2 in accordance with AS 2870 – 1996 which can be repaired and does not threaten the overall structural integrity of the building. Therefore the movement does not warrant expensive rectification procedures at this stage.

However due to ongoing movement of the founding soils it is likely that the cracking of the masonry walls will continue and the following site maintenance works are recommended to help reduce the potential movements.

- ▶ The removal of all trees and garden beds on the property or adjacent to the building which are within 10metres of the external walls in order to allow recovery of the clay founding soils.
- ▶ General site maintenance works in accordance with the requirements of the CSIRO publication 'Guide to Home Owners on Foundation Maintenance and Footing Performance' (CSIRO Publishing, Sheet No. 10-91).

5.2 Steel Structure

Based upon our inspection of the steel structure we confirm that the steelwork is generally adequate and in a serviceable condition, areas of surface corrosion are present and it is recommended that the steel frame is maintained and repaired to the following specifications to prolong the life of the building.

REPAIR OF ALL STRUCTURAL STEEL CORROSION

Preparation:

- ▶ All non galvanised steelwork and connections shall be thoroughly cleaned of all grease, dust and dirt by wiping or washing down with mineral turps, a degreaser or detergents.
- ▶ All non galvanised steelwork shall be thoroughly wire brushed, and loose rust, loose mill scale, dirt, oil and other contaminations removed in accordance with AS 1627.

Application:

- ▶ All areas of surface corrosion should be treated with Loctite Extend 755 rust preventative treatment (or a similar approved product).
- ▶ Paint all steelwork with a primer coat to protect the repaired areas.

5.3 Concrete floor slab

Based upon our inspection of the floor slab we confirm that the following specifications should be used to repair the damaged areas as required.

REPAIR OF ALL CONCRETE SPALLING

Preparation:

- ▶ Concrete substrate should be clean and sound. All loose material and surface laitance must be removed.
- ▶ All corroded steel must be exposed, therefore the concrete must be scabbled to a depth so as to achieve a sound substrate and to totally expose all corroded steel bars.
- ▶ The reinforcement should be wire brushed to remove all scale and loose material and the steel

Application:

- ▶ After all preparation has been completed and where necessary, the corroded reinforcement bar should be treated with Loctite Extend 755 rust preventative treatment (or a similar approved product).
- ▶ Saturate the concrete with clean water so as to achieve a saturated surface damp condition.
- ▶ Apply a Xypex Concentrate (or a similar approved product) slurry by brush to the prepared reinforcement steel. This will reinstate the passive alkaline barrier around the reinforcement steel. Refer to Product Data Sheet for mixing rates and procedures.
- ▶ Apply a scrub coat of Xypex Megamix II (or a similar approved product), concrete repair mortar to the prepared, saturated concrete surface. This scrub coat aids bonding. While the scrub coat is still green, apply Xypex Megamix II by trowel. Refer to Product Data Sheet for mixing rates and procedures.
- ▶ Xypex Megamix II should be applied in layers not greater than 50mm in thickness. Allow each layer to reach initial set before applying subsequent layers, the surface should be "scratched" to allow for increased bond of subsequent layers.
- ▶ A Xypex Concentrate coating should then be applied over Megamix II after the curing period to provide additional waterproofing to the top surface of the slab.

Curing:

- ▶ The repaired areas should be protected from rapid drying out by using moist curing methods for three days, or by using a curing compound.

REPAIR OF ALL CONCRETE CRACKING

Pressure Injected Structural Repair

- ▶ Vacuum or brush the crack clean along its entire length. Ensure foreign matter is removed from the crack.
- ▶ Drill 12mm diameter holes intersecting the plane of the crack at 150mm centres to a depth of 35-40mm. Vacuum or brush the holes and crack clean.
- ▶ "Vee" out the crack along its entire length to a 10mm depth and 15mm width.
- ▶ Pump Crack Repair Epoxy Sealer (123) via a series of injection nipples fixed into each of the 12mm diameter holes drilled into the crack. Continue the injection process until the product entirely fills the crack.
- ▶ Seal the surface of the crack with a suitable mastic sealant.

On completion of the concrete repairs the entire area of the slab should be painted with an epoxy based waterproofing compound.

The above works will be sufficient to repair the cracking and spalling currently present and help reduce any further deterioration of the concrete due to water penetration, however they will not prevent on-going movement of the concrete slab which may continue over time due to seasonal movements of the founding soils. Therefore it is important that the additional site maintenance works recommended above are implemented to help reduce further movement of the slab as well as the masonry walls and footings.

6. ESTIMATE OF RECTIFICATION COSTS

Our approximate estimate of costs for the recommended schedule of rectification work is as set out below:

Particulars	Estimate of Cost
▶ The removal of all trees and garden beds	\$3,000
▶ General site maintenance works	\$5,000
▶ Repair of structural steel corrosion	\$15,000
▶ Repair of concrete spalling	\$3,000
▶ Repair of concrete cracking	\$10,000
▶ Application of epoxy waterproofing compound	\$8,000
▶ Contingencies	\$5,000
TOTAL	\$49,000

Please note that this estimate is 'order of magnitude' only and provided as an indicative guide, accurate prices should always be sought from a registered builder / specialist prior to any commitments being made.

Should you require any additional information or clarification of the contents of this report, please contact the undersigned.

Yours faithfully



Colin Lynskey

Director

LYNSKEY Structural Consultants Pty Ltd

This page was missing.



Animal Impoundment Summary

Number of Animals impounded

1-July-2012 - 30-June-2013

Month/Year	Impoundment Method	
July 2012		401
	BOX - Drop Off Box - Impoundment	
	CAT - Cat	39
	DOG - Dog	52
	Total:	91
	INDEM - Indemnity Impoundment	
	DOG - Dog	6
	Total:	6
	PI - Private Impounding	
	BIRD - Bird	2
	CAT - Cat	68
	CATTLE - Cattle	11
	DOG - Dog	162
	HORSE - Horse	3
	SHEEP - Sheep	7
	Total:	253
	ROAM - Roaming Dog Impoundment	
	DOG - Dog	32
	GOAT - Goat	2
	HORSE - Horse	1
	Total:	35
	SEI - Seizure	
	DOG - Dog	16
	Total:	16
August 2012		305
	BOX - Drop Off Box - Impoundment	
	CAT - Cat	45
	DOG - Dog	37
	Total:	82
	INDEM - Indemnity Impoundment	
	DOG - Dog	7
	Total:	7
	PI - Private Impounding	
	BIRD - Bird	1
	CAT - Cat	47
	DOG - Dog	131

Month/Year	Impoundment Method	
	Total:	179
	PUB - Public - Roadside	
	CATTLE - Cattle	9
	Total:	9
	ROAM - Roaming Dog Impoundment	
	BIRD - Bird	1
	DOG - Dog	19
	Total:	20
	SEI - Seizure	
	DOG - Dog	7
	OTHER - Other	1
	Total:	8
September 2012		285
	BOX - Drop Off Box - Impoundment	
	CAT - Cat	32
	DOG - Dog	37
	Total:	69
	INDEM - Indemnity Impoundment	
	DOG - Dog	6
	Total:	6
	PI - Private Impounding	
	BIRD - Bird	1
	CAT - Cat	33
	DOG - Dog	140
	GOAT - Goat	1
	Total:	175
	ROAM - Roaming Dog Impoundment	
	DOG - Dog	27
	Total:	27
	SEI - Seizure	
	DOG - Dog	8
	Total:	8
October 2012		359
	BOX - Drop Off Box - Impoundment	
	CAT - Cat	33
	DOG - Dog	73
	Total:	106
	INDEM - Indemnity Impoundment	
	CAT - Cat	2
	DOG - Dog	4

Month/Year	Impoundment Method	
	Total:	6
	PI - Private Impounding	
	BIRD - Bird	4
	CAT - Cat	39
	DOG - Dog	173
	Total:	216
	ROAM - Roaming Dog Impoundment	
	DOG - Dog	14
	Total:	14
	SEI - Seizure	
	DOG - Dog	17
	Total:	17
November 2012		336
	BOX - Drop Off Box - Impoundment	
	CAT - Cat	29
	DOG - Dog	49
	OTHER - Other	1
	Total:	79
	INDEM - Indemnity Impoundment	
	CAT - Cat	2
	DOG - Dog	6
	Total:	8
	PI - Private Impounding	
	BIRD - Bird	2
	CAT - Cat	54
	DOG - Dog	151
	SHEEP - Sheep	1
	Total:	208
	ROAM - Roaming Dog Impoundment	
	DOG - Dog	25
	GOAT - Goat	1
	HORSE - Horse	3
	Total:	29
	SEI - Seizure	
	DOG - Dog	12
	Total:	12
December 2012		326
	BOX - Drop Off Box - Impoundment	
	BIRD - Bird	1
	CAT - Cat	53
	DOG - Dog	78

Month/Year	Impoundment Method	
	OTHER - Other	1
	Total:	133
	INDEM - Indemnity Impoundment	
	CAT - Cat	1
	DOG - Dog	10
	Total:	11
	PI - Private Impounding	
	BIRD - Bird	2
	CAT - Cat	37
	CATTLE - Cattle	1
	DOG - Dog	107
	HORSE - Horse	1
	OTHER - Other	1
	Total:	149
	ROAM - Roaming Dog Impoundment	
	CAT - Cat	1
	CATTLE - Cattle	4
	DOG - Dog	20
	HORSE - Horse	1
	Total:	26
	SEI - Seizure	
	DOG - Dog	7
	Total:	7

January 2013
313

BOX - Drop Off Box - Impoundment	
CAT - Cat	45
DOG - Dog	54
Total:	99
INDEM - Indemnity Impoundment	
DOG - Dog	3
Total:	3
PI - Private Impounding	
BIRD - Bird	2
CAT - Cat	42
CATTLE - Cattle	3
DOG - Dog	137
GOAT - Goat	3
HORSE - Horse	5
SHEEP - Sheep	1
Total:	193
ROAM - Roaming Dog Impoundment	
CAT - Cat	1

Month/Year	Impoundment Method		
	DOG - Dog	14	
	Total:	15	
	SEI - Seizure		
	DOG - Dog	3	
	Total:	3	
February 2013			355
	BOX - Drop Off Box - Impoundment		
	CAT - Cat	54	
	DOG - Dog	69	
	OTHER - Other	1	
	Total:	124	
	INDEM - Indemnity Impoundment		
	BIRD - Bird	1	
	DOG - Dog	11	
	Total:	12	
	PI - Private Impounding		
	BIRD - Bird	1	
	CAT - Cat	34	
	DOG - Dog	142	
	HORSE - Horse	2	
	Total:	179	
	ROAM - Roaming Dog Impoundment		
	DOG - Dog	25	
	Total:	25	
	SEI - Seizure		
	DOG - Dog	15	
	Total:	15	
March 2013			392
	BOX - Drop Off Box - Impoundment		
	CAT - Cat	58	
	DOG - Dog	85	
	Total:	143	
	INDEM - Indemnity Impoundment		
	CAT - Cat	2	
	DOG - Dog	6	
	Total:	8	
	PI - Private Impounding		
	CAT - Cat	41	
	DOG - Dog	156	
	HORSE - Horse	1	

Month/Year	Impoundment Method	
	Total:	198
	ROAM - Roaming Dog Impoundment	
	CATTLE - Cattle	1
	DOG - Dog	29
	HORSE - Horse	1
	Total:	31
	SEI - Seizure	
	DOG - Dog	12
	Total:	12

April 2013
353

BOX - Drop Off Box - Impoundment	
CAT - Cat	61
DOG - Dog	49
Total:	110
INDEM - Indemnity Impoundment	
CAT - Cat	1
DOG - Dog	8
Total:	9
PI - Private Impounding	
CAT - Cat	61
DOG - Dog	134
Total:	195
ROAM - Roaming Dog Impoundment	
DOG - Dog	30
HORSE - Horse	1
Total:	31
SEI - Seizure	
DOG - Dog	8
Total:	8

May 2013
360

BOX - Drop Off Box - Impoundment	
BIRD - Bird	1
CAT - Cat	59
DOG - Dog	39
Total:	99
INDEM - Indemnity Impoundment	
CAT - Cat	1
DOG - Dog	11
Total:	12
PI - Private Impounding	

Month/Year	Impoundment Method		
	CAT - Cat	58	
	CATTLE - Cattle	1	
	DOG - Dog	144	
	Total:	203	
	ROAM - Roaming Dog Impoundment		
	CAT - Cat	4	
	DOG - Dog	23	
	Total:	27	
	SEI - Seizure		
	CAT - Cat	1	
	DOG - Dog	18	
	Total:	19	
June 2013			361
	BOX - Drop Off Box - Impoundment		
	CAT - Cat	64	
	DOG - Dog	54	
	OTHER - Other	5	
	Total:	123	
	INDEM - Indemnity Impoundment		
	BIRD - Bird	1	
	CAT - Cat	6	
	DOG - Dog	7	
	Total:	14	
	PI - Private Impounding		
	CAT - Cat	48	
	CATTLE - Cattle	1	
	DOG - Dog	129	
	OTHER - Other	1	
	Total:	179	
	ROAM - Roaming Dog Impoundment		
	CATTLE - Cattle	2	
	DOG - Dog	28	
	GOAT - Goat	1	
	Total:	31	
	SEI - Seizure		
	DOG - Dog	14	
	Total:	14	
Total number of animals impounded:			4146



Animal Impoundment Summary

Number of Animals impounded

1-July-2013 - 30-June-2014

Month/Year	Impoundment Method	
July 2013		379
	BOX - Drop Off Box - Impoundment	
	CAT - Cat	47
	DOG - Dog	44
	OTHER - Other	1
	Total:	92
	INDEM - Indemnity Impoundment	
	BIRD - Bird	1
	CAT - Cat	25
	DOG - Dog	8
	Total:	34
	PI - Private Impounding	
	CAT - Cat	54
	CATTLE - Cattle	9
	DOG - Dog	117
	OTHER - Other	1
	Total:	181
	ROAM - Roaming Dog Impoundment	
	CAT - Cat	8
	DOG - Dog	43
	GOAT - Goat	1
	Total:	52
	SEI - Seizure	
	CAT - Cat	1
	DOG - Dog	19
	Total:	20
August 2013		359
	BOX - Drop Off Box - Impoundment	
	BIRD - Bird	1
	CAT - Cat	46
	DOG - Dog	51
	Total:	98
	INDEM - Indemnity Impoundment	
	BIRD - Bird	3
	CAT - Cat	4
	DOG - Dog	7

Month/Year	Impoundment Method	
	Total:	14
	PI - Private Impounding	
	BIRD - Bird	2
	CAT - Cat	49
	CATTLE - Cattle	1
	DOG - Dog	134
	OTHER - Other	2
	Total:	188
	ROAM - Roaming Dog Impoundment	
	CAT - Cat	2
	DOG - Dog	34
	Total:	36
	SEI - Seizure	
	DOG - Dog	23
	Total:	23
<hr/>		
September 2013		390
	BOX - Drop Off Box - Impoundment	
	CAT - Cat	75
	DOG - Dog	57
	OTHER - Other	1
	Total:	133
	INDEM - Indemnity Impoundment	
	CAT - Cat	6
	DOG - Dog	13
	Total:	19
	PI - Private Impounding	
	BIRD - Bird	1
	CAT - Cat	46
	CATTLE - Cattle	2
	DOG - Dog	121
	Total:	170
	ROAM - Roaming Dog Impoundment	
	CAT - Cat	3
	CATTLE - Cattle	2
	DOG - Dog	32
	Total:	37
	SEI - Seizure	
	DOG - Dog	31
	Total:	31
<hr/>		
October 2013		371
	BOX - Drop Off Box - Impoundment	

Month/Year	Impoundment Method	
	BIRD - Bird	3
	CAT - Cat	47
	DOG - Dog	60
	OTHER - Other	6
	Total:	116
	INDEM - Indemnity Impoundment	
	BIRD - Bird	2
	CAT - Cat	3
	DOG - Dog	12
	HORSE - Horse	2
	SHEEP - Sheep	2
	Total:	21
	PI - Private Impounding	
	CAT - Cat	53
	CATTLE - Cattle	2
	DOG - Dog	136
	OTHER - Other	1
	Total:	192
	ROAM - Roaming Dog Impoundment	
	DOG - Dog	22
	Total:	22
	SEI - Seizure	
	DOG - Dog	20
	Total:	20

November 2013
485

BOX - Drop Off Box - Impoundment	
BIRD - Bird	1
CAT - Cat	49
DOG - Dog	65
OTHER - Other	3
Total:	118
INDEM - Indemnity Impoundment	
BIRD - Bird	2
CAT - Cat	17
DOG - Dog	9
Total:	28
PI - Private Impounding	
BIRD - Bird	2
CAT - Cat	108
DOG - Dog	162
HORSE - Horse	1
Total:	273

Month/Year Impoundment Method

ROAM	- Roaming Dog Impoundment	
CAT	- Cat	1
CATTLE	- Cattle	10
DOG	- Dog	34
Total:		45
SEI	- Seizure	
CAT	- Cat	2
DOG	- Dog	19
Total:		21

December 2013

438

BOX	- Drop Off Box - Impoundment	
BIRD	- Bird	5
CAT	- Cat	87
DOG	- Dog	90
OTHER	- Other	4
Total:		186
INDEM	- Indemnity Impoundment	
BIRD	- Bird	1
CAT	- Cat	2
DOG	- Dog	9
OTHER	- Other	1
Total:		13
PI	- Private Impounding	
BIRD	- Bird	2
CAT	- Cat	69
DOG	- Dog	121
GOAT	- Goat	1
HORSE	- Horse	1
OTHER	- Other	1
Total:		195
ROAM	- Roaming Dog Impoundment	
CATTLE	- Cattle	5
DOG	- Dog	22
Total:		27
SEI	- Seizure	
CAT	- Cat	2
DOG	- Dog	15
Total:		17

January 2014

478

BOX	- Drop Off Box - Impoundment	
BIRD	- Bird	3
CAT	- Cat	113

Month/Year	Impoundment Method	
	DOG - Dog	76
	Total:	192
	INDEM - Indemnity Impoundment	
	BIRD - Bird	1
	CAT - Cat	2
	DOG - Dog	4
	Total:	7
	PI - Private Impounding	
	BIRD - Bird	1
	CAT - Cat	71
	CATTLE - Cattle	4
	DOG - Dog	144
	GOAT - Goat	1
	Total:	221
	ROAM - Roaming Dog Impoundment	
	CAT - Cat	1
	DOG - Dog	37
	SHEEP - Sheep	1
	Total:	39
	SEI - Seizure	
	DOG - Dog	19
	Total:	19

February 2014

383

BOX - Drop Off Box - Impoundment	
CAT - Cat	48
DOG - Dog	59
Total:	107
INDEM - Indemnity Impoundment	
BIRD - Bird	1
CAT - Cat	4
DOG - Dog	10
Total:	15
PI - Private Impounding	
BIRD - Bird	3
CAT - Cat	69
DOG - Dog	123
HORSE - Horse	1
OTHER - Other	11
Total:	207
ROAM - Roaming Dog Impoundment	
CAT - Cat	11
DOG - Dog	17

Month/Year	Impoundment Method		
	HORSE - Horse	4	
	Total:	32	
	SEI - Seizure		
	DOG - Dog	22	
	Total:	22	
March 2014			529
	BOX - Drop Off Box - Impoundment		
	BIRD - Bird	4	
	CAT - Cat	113	
	DOG - Dog	71	
	Total:	188	
	INDEM - Indemnity Impoundment		
	CAT - Cat	7	
	DOG - Dog	11	
	Total:	18	
	PI - Private Impounding		
	CAT - Cat	103	
	DOG - Dog	149	
	GOAT - Goat	2	
	HORSE - Horse	3	
	PIG - Pig	2	
	SHEEP - Sheep	6	
	Total:	265	
	ROAM - Roaming Dog Impoundment		
	DOG - Dog	27	
	Total:	27	
	SEI - Seizure		
	DOG - Dog	30	
	PIG - Pig	1	
	Total:	31	
April 2014			533
	BOX - Drop Off Box - Impoundment		
	CAT - Cat	121	
	DOG - Dog	87	
	GOAT - Goat	2	
	Total:	210	
	INDEM - Indemnity Impoundment		
	BIRD - Bird	3	
	CAT - Cat	1	
	DOG - Dog	10	
	Total:	14	

Month/Year Impoundment Method

PI	- Private Impounding	
BIRD	- Bird	1
CAT	- Cat	70
DOG	- Dog	168
HORSE	- Horse	2
PIG	- Pig	2
Total:		243
ROAM	- Roaming Dog Impoundment	
CATTLE	- Cattle	7
DOG	- Dog	16
HORSE	- Horse	1
PIG	- Pig	1
Total:		25
SEI	- Seizure	
DOG	- Dog	40
Total:		40
TRAP	- Trapped	
CAT	- Cat	1
Total:		1

May 2014

484

BOX	- Drop Off Box - Impoundment	
CAT	- Cat	121
DOG	- Dog	67
Total:		188
INDEM	- Indemnity Impoundment	
BIRD	- Bird	5
DOG	- Dog	5
Total:		10
PI	- Private Impounding	
CAT	- Cat	80
CATTLE	- Cattle	7
DOG	- Dog	137
GOAT	- Goat	2
HORSE	- Horse	2
OTHER	- Other	3
SHEEP	- Sheep	6
Total:		237
ROAM	- Roaming Dog Impoundment	
CATTLE	- Cattle	2
DOG	- Dog	29
Total:		31
SEI	- Seizure	

Month/Year	Impoundment Method	
	DOG - Dog	18
	Total:	18
June 2014		470
	BOX - Drop Off Box - Impoundment	
	BIRD - Bird	2
	CAT - Cat	66
	DOG - Dog	74
	OTHER - Other	6
	Total:	148
	INDEM - Indemnity Impoundment	
	BIRD - Bird	2
	DOG - Dog	7
	Total:	9
	PI - Private Impounding	
	BIRD - Bird	3
	CAT - Cat	71
	CATTLE - Cattle	3
	DOG - Dog	155
	HORSE - Horse	1
	Total:	233
	ROAM - Roaming Dog Impoundment	
	CAT - Cat	2
	CATTLE - Cattle	10
	DOG - Dog	31
	GOAT - Goat	4
	SHEEP - Sheep	4
	Total:	51
	SEI - Seizure	
	DOG - Dog	26
	PIG - Pig	1
	Total:	27
	TRAP - Trapped	
	CAT - Cat	2
	Total:	2
Total number of animals impounded:		5299



Animal Impoundment Summary

Number of Animals impounded

1-July-2014 - 30-June-2015

Month/Year	Impoundment Method	
July 2014		419
	BOX - Drop Off Box - Impoundment	
	BIRD - Bird	2
	CAT - Cat	41
	DOG - Dog	48
	Total:	91
	INDEM - Indemnity Impoundment	
	BIRD - Bird	1
	DOG - Dog	12
	Total:	13
	PI - Private Impounding	
	BIRD - Bird	1
	CAT - Cat	44
	CATTLE - Cattle	2
	DOG - Dog	178
	Total:	225
	ROAM - Roaming Dog Impoundment	
	CAT - Cat	1
	CATTLE - Cattle	6
	DOG - Dog	33
	GOAT - Goat	3
	HORSE - Horse	1
	Total:	44
	SEI - Seizure	
	CATTLE - Cattle	9
	DOG - Dog	37
	Total:	46
August 2014		472
	BOX - Drop Off Box - Impoundment	
	CAT - Cat	50
	DOG - Dog	79
	Total:	129
	INDEM - Indemnity Impoundment	
	DOG - Dog	18
	Total:	18

Month/Year	Impoundment Method		
	PI - Private Impounding		
	BIRD - Bird	1	
	CAT - Cat	43	
	CATTLE - Cattle	7	
	DOG - Dog	202	
	HORSE - Horse	4	
	Total:	257	
	ROAM - Roaming Dog Impoundment		
	CATTLE - Cattle	5	
	DOG - Dog	36	
	GOAT - Goat	1	
	Total:	42	
	SEI - Seizure		
	DOG - Dog	26	
	Total:	26	
September 2014			389
	BOX - Drop Off Box - Impoundment		
	CAT - Cat	32	
	DOG - Dog	74	
	OTHER - Other	3	
	Total:	109	
	INDEM - Indemnity Impoundment		
	CAT - Cat	1	
	DOG - Dog	12	
	Total:	13	
	PI - Private Impounding		
	BIRD - Bird	1	
	CAT - Cat	41	
	CATTLE - Cattle	2	
	DOG - Dog	162	
	HORSE - Horse	1	
	Total:	207	
	ROAM - Roaming Dog Impoundment		
	CAT - Cat	5	
	DOG - Dog	19	
	Total:	24	
	SEI - Seizure		
	BIRD - Bird	2	
	DOG - Dog	34	
	Total:	36	
October 2014			432

Month/Year	Impoundment Method	
	BOX - Drop Off Box - Impoundment	
	BIRD - Bird	1
	CAT - Cat	57
	DOG - Dog	73
	OTHER - Other	2
	Total:	133
	FOUND - Found Stray Animal	
	DOG - Dog	1
	Total:	1
	INDEM - Indemnity Impoundment	
	BIRD - Bird	1
	CAT - Cat	1
	DOG - Dog	12
	Total:	14
	PI - Private Impounding	
	BIRD - Bird	6
	CAT - Cat	49
	CATTLE - Cattle	1
	DOG - Dog	161
	GOAT - Goat	2
	OTHER - Other	1
	Total:	220
	ROAM - Roaming Dog Impoundment	
	CAT - Cat	1
	DOG - Dog	17
	HORSE - Horse	2
	Total:	20
	RSPCA - RSPCA Ambulance	
	CAT - Cat	1
	Total:	1
	SEI - Seizure	
	DOG - Dog	36
	GOAT - Goat	7
	Total:	43

November 2014

548

BOX - Drop Off Box - Impoundment	
BIRD - Bird	4
CAT - Cat	123
DOG - Dog	83
OTHER - Other	1
Total:	211
INDEM - Indemnity Impoundment	

Month/Year	Impoundment Method	
	CAT - Cat	1
	DOG - Dog	12
	Total:	13
	PI - Private Impounding	
	BIRD - Bird	1
	CAT - Cat	78
	CATTLE - Cattle	35
	DOG - Dog	154
	GOAT - Goat	1
	HORSE - Horse	1
	Total:	270
	ROAM - Roaming Dog Impoundment	
	BIRD - Bird	2
	CAT - Cat	2
	DOG - Dog	17
	Total:	21
	SEI - Seizure	
	BIRD - Bird	1
	DOG - Dog	32
	Total:	33

December 2014
516

BOX - Drop Off Box - Impoundment	
BIRD - Bird	1
CAT - Cat	102
DOG - Dog	78
Total:	181
FOUND - Found Stray Animal	
OTHER - Other	1
Total:	1
INDEM - Indemnity Impoundment	
BIRD - Bird	1
CAT - Cat	2
DOG - Dog	11
Total:	14
PI - Private Impounding	
BIRD - Bird	1
CAT - Cat	65
CATTLE - Cattle	1
DOG - Dog	193
GOAT - Goat	1
HORSE - Horse	1
Total:	262

Month/Year Impoundment Method

ROAM	- Roaming Dog Impoundment	
CAT	- Cat	4
DOG	- Dog	26
Total:		30
SEI	- Seizure	
DOG	- Dog	28
Total:		28

January 2015**547**

BOX	- Drop Off Box - Impoundment	
BIRD	- Bird	3
CAT	- Cat	114
DOG	- Dog	110
OTHER	- Other	4
Total:		231
INDEM	- Indemnity Impoundment	
CAT	- Cat	2
DOG	- Dog	7
Total:		9
PI	- Private Impounding	
BIRD	- Bird	2
CAT	- Cat	92
DOG	- Dog	159
HORSE	- Horse	3
Total:		256
ROAM	- Roaming Dog Impoundment	
CAT	- Cat	5
CATTLE	- Cattle	1
DOG	- Dog	20
Total:		26
SEI	- Seizure	
DOG	- Dog	21
Total:		21
TRAP	- Trapped	
CAT	- Cat	4
Total:		4

February 2015**468**

BOX	- Drop Off Box - Impoundment	
BIRD	- Bird	1
CAT	- Cat	103
DOG	- Dog	85
OTHER	- Other	1

Month/Year
Impoundment Method

Total: **190**

INDEM - Indemnity Impoundment

BIRD - Bird 3

CAT - Cat 12

DOG - Dog 10

Total: **25**

PI - Private Impounding

BIRD - Bird 1

CAT - Cat 73

DOG - Dog 140

GOAT - Goat 1

HORSE - Horse 1

Total: **216**

ROAM - Roaming Dog Impoundment

DOG - Dog 12

GOAT - Goat 3

Total: **15**

SEI - Seizure

DOG - Dog 22

Total: **22**

March 2015

508

BOX - Drop Off Box - Impoundment

BIRD - Bird 1

CAT - Cat 103

DOG - Dog 84

OTHER - Other 5

Total: **193**

INDEM - Indemnity Impoundment

CAT - Cat 9

DOG - Dog 7

Total: **16**

PI - Private Impounding

BIRD - Bird 2

CAT - Cat 96

DOG - Dog 137

HORSE - Horse 1

Total: **236**

ROAM - Roaming Dog Impoundment

DOG - Dog 28

Total: **28**

SEI - Seizure

Month/Year	Impoundment Method		
	DOG - Dog	35	
	Total:	35	
April 2015			487
	BOX - Drop Off Box - Impoundment		
	BIRD - Bird	3	
	CAT - Cat	98	
	DOG - Dog	91	
	Total:	192	
	FOUND - Found Stray Animal		
	DOG - Dog	1	
	Total:	1	
	INDEM - Indemnity Impoundment		
	CAT - Cat	1	
	DOG - Dog	13	
	Total:	14	
	PI - Private Impounding		
	BIRD - Bird	2	
	CAT - Cat	77	
	DOG - Dog	157	
	HORSE - Horse	1	
	OTHER - Other	1	
	Total:	238	
	ROAM - Roaming Dog Impoundment		
	CATTLE - Cattle	1	
	DOG - Dog	20	
	Total:	21	
	SEI - Seizure		
	DOG - Dog	21	
	Total:	21	
May 2015			561
	BOX - Drop Off Box - Impoundment		
	BIRD - Bird	1	
	CAT - Cat	169	
	DOG - Dog	82	
	Total:	252	
	INDEM - Indemnity Impoundment		
	BIRD - Bird	2	
	CAT - Cat	6	
	DOG - Dog	16	
	Total:	24	
	PI - Private Impounding		

Month/Year	Impoundment Method	
	BIRD - Bird	2
	CAT - Cat	94
	CATTLE - Cattle	1
	DOG - Dog	131
	PIG - Pig	1
	Total:	229
	ROAM - Roaming Dog Impoundment	
	CAT - Cat	1
	DOG - Dog	20
	GOAT - Goat	1
	Total:	22
	SEI - Seizure	
	DOG - Dog	34
	Total:	34
<hr/>		
June 2015		479
	BOX - Drop Off Box - Impoundment	
	BIRD - Bird	3
	CAT - Cat	103
	DOG - Dog	90
	OTHER - Other	4
	Total:	200
	INDEM - Indemnity Impoundment	
	CAT - Cat	1
	DOG - Dog	7
	HORSE - Horse	1
	OTHER - Other	1
	Total:	10
	PI - Private Impounding	
	BIRD - Bird	5
	CAT - Cat	64
	CATTLE - Cattle	1
	DOG - Dog	144
	HORSE - Horse	1
	Total:	215
	ROAM - Roaming Dog Impoundment	
	DOG - Dog	32
	Total:	32
	SEI - Seizure	
	DOG - Dog	22
	Total:	22
<hr/>		
Total number of animals impounded:		5826



Animal Impoundment Summary

Number of Animals impounded

1-July-2015 - 30-June-2016

Month/Year	Impoundment Method	
July 2015		458
	BOX - Drop Off Box - Impoundment	
	BIRD - Bird	3
	CAT - Cat	70
	DOG - Dog	51
	OTHER - Other	2
	Total:	126
	INDEM - Indemnity Impoundment	
	BIRD - Bird	4
	CAT - Cat	2
	DOG - Dog	15
	Total:	21
	PI - Private Impounding	
	BIRD - Bird	2
	CAT - Cat	92
	CATTLE - Cattle	2
	DOG - Dog	142
	OTHER - Other	1
	Total:	239
	ROAM - Roaming Dog Impoundment	
	CAT - Cat	2
	CATTLE - Cattle	2
	DOG - Dog	33
	Total:	37
	SEI - Seizure	
	DOG - Dog	35
	Total:	35
August 2015		470
	BOX - Drop Off Box - Impoundment	
	BIRD - Bird	10
	CAT - Cat	64
	DOG - Dog	60
	OTHER - Other	5
	Total:	139
	FOUND - Found Stray Animal	
	BIRD - Bird	1

Month/Year	Impoundment Method	
	DOG - Dog	1
	Total:	2
	INDEM - Indemnity Impoundment	
	CAT - Cat	1
	DOG - Dog	14
	Total:	15
	PI - Private Impounding	
	BIRD - Bird	1
	CAT - Cat	66
	CATTLE - Cattle	4
	DOG - Dog	163
	PIG - Pig	1
	Total:	235
	ROAM - Roaming Dog Impoundment	
	BIRD - Bird	2
	DOG - Dog	38
	Total:	40
	SEI - Seizure	
	DOG - Dog	39
	Total:	39

September 2015
455

BOX - Drop Off Box - Impoundment	
BIRD - Bird	3
CAT - Cat	79
DOG - Dog	66
OTHER - Other	4
Total:	152
INDEM - Indemnity Impoundment	
CAT - Cat	3
DOG - Dog	13
Total:	16
PI - Private Impounding	
BIRD - Bird	2
CAT - Cat	77
DOG - Dog	146
Total:	225
ROAM - Roaming Dog Impoundment	
CAT - Cat	1
DOG - Dog	21
Total:	22
SEI - Seizure	

Month/Year	Impoundment Method		
	DOG	- Dog	40
	Total:		40
October 2015			456
	BOX	- Drop Off Box - Impoundment	
	CAT	- Cat	71
	DOG	- Dog	84
	Total:		155
	INDEM	- Indemnity Impoundment	
	BIRD	- Bird	8
	CAT	- Cat	1
	DOG	- Dog	19
	GOAT	- Goat	2
	Total:		30
	PI	- Private Impounding	
	CAT	- Cat	69
	DOG	- Dog	142
	PIG	- Pig	1
	Total:		212
	ROAM	- Roaming Dog Impoundment	
	DOG	- Dog	23
	GOAT	- Goat	2
	Total:		25
	SEI	- Seizure	
	CAT	- Cat	1
	DOG	- Dog	33
	Total:		34
November 2015			505
	BOX	- Drop Off Box - Impoundment	
	BIRD	- Bird	2
	CAT	- Cat	120
	DOG	- Dog	89
	OTHER	- Other	1
	Total:		212
	INDEM	- Indemnity Impoundment	
	BIRD	- Bird	1
	CAT	- Cat	10
	DOG	- Dog	12
	Total:		23
	PI	- Private Impounding	
	BIRD	- Bird	9
	CAT	- Cat	100
	DOG	- Dog	110

Month/Year	Impoundment Method		
	HORSE - Horse	1	
	Total:	220	
	ROAM - Roaming Dog Impoundment		
	CATTLE - Cattle	5	
	DOG - Dog	23	
	Total:	28	
	SEI - Seizure		
	DOG - Dog	21	
	Total:	21	
	TRAP - Trapped		
	CAT - Cat	1	
	Total:	1	
<hr/>			
December 2015			592
	BOX - Drop Off Box - Impoundment		
	BIRD - Bird	4	
	CAT - Cat	139	
	DOG - Dog	107	
	OTHER - Other	1	
	Total:	251	
	INDEM - Indemnity Impoundment		
	CAT - Cat	1	
	DOG - Dog	13	
	Total:	14	
	PI - Private Impounding		
	BIRD - Bird	2	
	CAT - Cat	100	
	CATTLE - Cattle	1	
	DOG - Dog	160	
	HORSE - Horse	3	
	Total:	266	
	ROAM - Roaming Dog Impoundment		
	CAT - Cat	1	
	DOG - Dog	25	
	Total:	26	
	SEI - Seizure		
	DOG - Dog	35	
	Total:	35	
<hr/>			
January 2016			515
	BOX - Drop Off Box - Impoundment		
	CAT - Cat	128	
	DOG - Dog	97	

Month/Year	Impoundment Method	
	Total:	225
	INDEM - Indemnity Impoundment	
	BIRD - Bird	14
	DOG - Dog	17
	Total:	31
	PI - Private Impounding	
	BIRD - Bird	2
	CAT - Cat	64
	DOG - Dog	136
	PIG - Pig	2
	Total:	204
	PUB - Public - Roadside	
	DOG - Dog	1
	Total:	1
	ROAM - Roaming Dog Impoundment	
	CAT - Cat	2
	DOG - Dog	21
	GOAT - Goat	2
	PIG - Pig	1
	Total:	26
	SEI - Seizure	
	DOG - Dog	28
	Total:	28

February 2016
529

BOX - Drop Off Box - Impoundment	
BIRD - Bird	1
CAT - Cat	127
DOG - Dog	56
OTHER - Other	1
Total:	185
INDEM - Indemnity Impoundment	
CAT - Cat	4
DOG - Dog	33
Total:	37
PI - Private Impounding	
CAT - Cat	134
DOG - Dog	124
Total:	258
ROAM - Roaming Dog Impoundment	
CATTLE - Cattle	1
DOG - Dog	21

Month/Year	Impoundment Method
------------	--------------------

Total:	22
SEI - Seizure	
DOG - Dog	27
Total:	27

March 2016

578

BOX - Drop Off Box - Impoundment	
BIRD - Bird	4
CAT - Cat	141
DOG - Dog	86
Total:	231
INDEM - Indemnity Impoundment	
BIRD - Bird	1
CAT - Cat	3
DOG - Dog	10
Total:	14
PI - Private Impounding	
BIRD - Bird	7
CAT - Cat	100
DOG - Dog	171
Total:	278
PUB - Public - Roadside	
DOG - Dog	1
Total:	1
ROAM - Roaming Dog Impoundment	
DOG - Dog	24
PIG - Pig	3
Total:	27
SEI - Seizure	
DOG - Dog	27
Total:	27

April 2016

452

BOX - Drop Off Box - Impoundment	
BIRD - Bird	1
CAT - Cat	138
DOG - Dog	54
Total:	193
INDEM - Indemnity Impoundment	
BIRD - Bird	1
CAT - Cat	1
DOG - Dog	11

Month/Year	Impoundment Method	
	Total:	13
	PI - Private Impounding	
	CAT - Cat	81
	DOG - Dog	120
	Total:	201
	PUB - Public - Roadside	
	DOG - Dog	1
	Total:	1
	ROAM - Roaming Dog Impoundment	
	BIRD - Bird	4
	DOG - Dog	13
	GOAT - Goat	2
	Total:	19
	SEI - Seizure	
	DOG - Dog	25
	Total:	25

May 2016

479

BOX - Drop Off Box - Impoundment	
BIRD - Bird	1
CAT - Cat	122
DOG - Dog	73
OTHER - Other	7
Total:	203
INDEM - Indemnity Impoundment	
CAT - Cat	3
DOG - Dog	8
Total:	11
PI - Private Impounding	
BIRD - Bird	6
CAT - Cat	94
DOG - Dog	131
GOAT - Goat	3
HORSE - Horse	1
OTHER - Other	1
PIG - Pig	3
Total:	239
ROAM - Roaming Dog Impoundment	
DOG - Dog	12
Total:	12
SEI - Seizure	
DOG - Dog	14

Month/Year	Impoundment Method	
	Total:	14
June 2016		454
	BOX - Drop Off Box - Impoundment	
	BIRD - Bird	1
	CAT - Cat	63
	DOG - Dog	71
	OTHER - Other	3
	Total:	138
	CANCEL - Cancelled	
	DOG - Dog	1
	Total:	1
	INDEM - Indemnity Impoundment	
	CAT - Cat	1
	DOG - Dog	5
	Total:	6
	PI - Private Impounding	
	CAT - Cat	97
	DOG - Dog	162
	GOAT - Goat	1
	Total:	260
	ROAM - Roaming Dog Impoundment	
	BIRD - Bird	1
	CAT - Cat	4
	DOG - Dog	16
	GOAT - Goat	1
	Total:	22
	SEI - Seizure	
	DOG - Dog	27
	Total:	27
Total number of animals impounded:		5943



Animal Impoundment Summary

Number of Animals impounded

1-July-2016 - 30-June-2017

Month/Year	Impoundment Method	
July 2016		381
	BOX - Drop Off Box - Impoundment	
	CAT - Cat	54
	DOG - Dog	82
	Total:	136
	CANCEL - Cancelled	
	DOG - Dog	1
	Total:	1
	FOUND - Found Stray Animal	
	DOG - Dog	1
	Total:	1
	INDEM - Indemnity Impoundment	
	BIRD - Bird	1
	CAT - Cat	2
	DOG - Dog	4
	Total:	7
	PI - Private Impounding	
	BIRD - Bird	9
	CAT - Cat	71
	DOG - Dog	120
	Total:	200
	ROAM - Roaming Dog Impoundment	
	BIRD - Bird	1
	CAT - Cat	1
	DOG - Dog	20
	Total:	22
	SEI - Seizure	
	DOG - Dog	14
	Total:	14
August 2016		371
	BOX - Drop Off Box - Impoundment	
	CAT - Cat	55
	DOG - Dog	50
	OTHER - Other	5
	Total:	110

Month/Year
Impoundment Method

INDEM	- Indemnity Impoundment	
BIRD	- Bird	4
CAT	- Cat	1
DOG	- Dog	8
Total:		13
PI	- Private Impounding	
CAT	- Cat	84
DOG	- Dog	127
HORSE	- Horse	2
OTHER	- Other	1
Total:		214
ROAM	- Roaming Dog Impoundment	
DOG	- Dog	16
Total:		16
SEI	- Seizure	
DOG	- Dog	18
Total:		18

September 2016
417

BOX	- Drop Off Box - Impoundment	
BIRD	- Bird	2
CAT	- Cat	60
DOG	- Dog	63
OTHER	- Other	2
Total:		127
INDEM	- Indemnity Impoundment	
BIRD	- Bird	1
CAT	- Cat	1
DOG	- Dog	17
PIG	- Pig	1
SHEEP	- Sheep	1
Total:		21
PI	- Private Impounding	
BIRD	- Bird	10
CAT	- Cat	70
CATTLE	- Cattle	2
DOG	- Dog	139
HORSE	- Horse	1
OTHER	- Other	1
PIG	- Pig	2
SHEEP	- Sheep	1
Total:		226
ROAM	- Roaming Dog Impoundment	
DOG	- Dog	17

Month/Year	Impoundment Method	
	Total:	17
SEI	- Seizure	
DOG	- Dog	26
	Total:	26

October 2016

331

BOX	- Drop Off Box - Impoundment	
BIRD	- Bird	1
CAT	- Cat	55
DOG	- Dog	49
	Total:	105
INDEM	- Indemnity Impoundment	
BIRD	- Bird	6
DOG	- Dog	2
	Total:	8
PI	- Private Impounding	
BIRD	- Bird	1
CAT	- Cat	56
DOG	- Dog	130
HORSE	- Horse	2
SHEEP	- Sheep	1
	Total:	190
ROAM	- Roaming Dog Impoundment	
CAT	- Cat	1
DOG	- Dog	9
	Total:	10
SEI	- Seizure	
DOG	- Dog	18
	Total:	18

November 2016

442

BOX	- Drop Off Box - Impoundment	
BIRD	- Bird	2
CAT	- Cat	72
DOG	- Dog	73
	Total:	147
INDEM	- Indemnity Impoundment	
BIRD	- Bird	1
CAT	- Cat	2
DOG	- Dog	10
	Total:	13
PI	- Private Impounding	
BIRD	- Bird	4

Month/Year	Impoundment Method		
	CAT	- Cat	90
	DOG	- Dog	146
	OTHER	- Other	1
	SHEEP	- Sheep	1
	Total:		242
	ROAM	- Roaming Dog Impoundment	
	CATTLE	- Cattle	2
	DOG	- Dog	16
	Total:		18
	SEI	- Seizure	
	DOG	- Dog	22
	Total:		22
<hr/>			
December 2016			416
	BOX	- Drop Off Box - Impoundment	
	BIRD	- Bird	1
	CAT	- Cat	117
	DOG	- Dog	73
	Total:		191
	INDEM	- Indemnity Impoundment	
	DOG	- Dog	5
	Total:		5
	PI	- Private Impounding	
	BIRD	- Bird	2
	CAT	- Cat	62
	DOG	- Dog	119
	Total:		183
	ROAM	- Roaming Dog Impoundment	
	DOG	- Dog	20
	Total:		20
	SEI	- Seizure	
	DOG	- Dog	17
	Total:		17
<hr/>			
January 2017			416
	BOX	- Drop Off Box - Impoundment	
	BIRD	- Bird	5
	CAT	- Cat	106
	DOG	- Dog	59
	Total:		170
	INDEM	- Indemnity Impoundment	
	BIRD	- Bird	4
	DOG	- Dog	16

Month/Year	Impoundment Method		
	Total:	20	
	PI - Private Impounding		
	CAT - Cat	77	
	DOG - Dog	122	
	PIG - Pig	1	
	Total:	200	
	ROAM - Roaming Dog Impoundment		
	DOG - Dog	11	
	Total:	11	
	SEI - Seizure		
	DOG - Dog	14	
	OTHER - Other	1	
	Total:	15	
February 2017			318
	BOX - Drop Off Box - Impoundment		
	CAT - Cat	65	
	DOG - Dog	49	
	OTHER - Other	1	
	Total:	115	
	INDEM - Indemnity Impoundment		
	BIRD - Bird	1	
	CAT - Cat	1	
	DOG - Dog	12	
	HORSE - Horse	1	
	Total:	15	
	PI - Private Impounding		
	CAT - Cat	70	
	DOG - Dog	110	
	Total:	180	
	ROAM - Roaming Dog Impoundment		
	DOG - Dog	5	
	Total:	5	
	SEI - Seizure		
	DOG - Dog	3	
	Total:	3	
March 2017			435
	BOX - Drop Off Box - Impoundment		
	BIRD - Bird	1	
	CAT - Cat	92	
	DOG - Dog	58	

Month/Year
Impoundment Method

Total:	151
INDEM - Indemnity Impoundment	
BIRD - Bird	6
CAT - Cat	1
DOG - Dog	10
Total:	17
PI - Private Impounding	
BIRD - Bird	1
CAT - Cat	103
DOG - Dog	124
PIG - Pig	2
Total:	230
ROAM - Roaming Dog Impoundment	
DOG - Dog	22
Total:	22
SEI - Seizure	
DOG - Dog	15
Total:	15

April 2017
373

BOX - Drop Off Box - Impoundment	
BIRD - Bird	2
CAT - Cat	70
DOG - Dog	57
Total:	129
INDEM - Indemnity Impoundment	
CAT - Cat	1
DOG - Dog	12
Total:	13
PI - Private Impounding	
BIRD - Bird	9
CAT - Cat	76
DOG - Dog	125
HORSE - Horse	2
Total:	212
ROAM - Roaming Dog Impoundment	
DOG - Dog	15
Total:	15
SEI - Seizure	
DOG - Dog	4
Total:	4

Month/Year	Impoundment Method	
May 2017		489
	BOX - Drop Off Box - Impoundment	
	BIRD - Bird	7
	CAT - Cat	139
	DOG - Dog	44
	Total:	190
	INDEM - Indemnity Impoundment	
	CAT - Cat	13
	DOG - Dog	15
	Total:	28
	PI - Private Impounding	
	BIRD - Bird	3
	CAT - Cat	127
	DOG - Dog	114
	Total:	244
	ROAM - Roaming Dog Impoundment	
	CAT - Cat	3
	DOG - Dog	13
	Total:	16
	SEI - Seizure	
	DOG - Dog	11
	Total:	11
June 2017		373
	BOX - Drop Off Box - Impoundment	
	BIRD - Bird	1
	CAT - Cat	36
	DOG - Dog	41
	Total:	78
	INDEM - Indemnity Impoundment	
	BIRD - Bird	1
	CAT - Cat	4
	DOG - Dog	15
	Total:	20
	PI - Private Impounding	
	BIRD - Bird	1
	CAT - Cat	81
	DOG - Dog	133
	GOAT - Goat	3
	Total:	218
	ROAM - Roaming Dog Impoundment	
	DOG - Dog	21

Month/Year	Impoundment Method	
	Total:	21
	SEI - Seizure	
	DOG - Dog	35
	Total:	35
	TRAP - Trapped	
	CAT - Cat	1
	Total:	1
Total number of animals impounded:		4762

T14 DWELLING STRUCTURE BY HOUSEHOLD COMPOSITION AND FAMILY COMPOSITION (3 of 3)

Count of occupied private dwellings

	Family households(a)				Total	Lone person households	Group households	Other households(b)	Total
	Couple family with no children	Couple family with children	One parent family	Other family					
2016 CENSUS									
Separate house	14,101	21,793	8,856	732	45,490	9,573	1,902	3,135	60,097
Semi-detached, row or terrace house, townhouse etc. with:									
One storey	473	307	488	44	1,316	1,678	168	385	3,552
Two or more storeys	359	388	431	52	1,238	746	121	268	2,371
Total	837	702	923	93	2,550	2,424	285	656	5,922
Flat, Unit or Apartment:									
In a one or two storey block	92	42	95	4	234	515	33	115	904
In a three storey block	13	11	26	3	48	56	3	21	137
In a four or more storey block	5	0	0	0	13	26	0	16	56
Attached to a house	0	0	0	0	3	7	0	0	11
Total	118	57	121	10	304	604	36	159	1,107
Other dwelling:									
Caravan, cabin, houseboat	34	7	15	3	63	189	11	75	340
Improvised home, tent, sleepers out	0	3	0	0	4	3	0	16	25
House or flat attached to a shop, office etc.	18	13	3	3	35	10	0	6	54
Total	52	29	22	3	106	207	11	101	418
Dwelling structure not stated	35	36	20	0	91	65	3	16	179
Total	15,143	22,604	9,952	844	48,539	12,877	2,240	4,060	67,725

This table is based on place of enumeration.

(a) In multiple family households, only the family composition of the primary family is included.

(b) Comprises 'Visitors only' and 'Other non-classifiable' households.

Please note that there are small random adjustments made to all cell values to protect the confidentiality of data. These adjustments may cause the sum of rows or columns to differ by small amounts from table totals.



PROPOSED SITE PLAN - OPTION B - STAGE 1

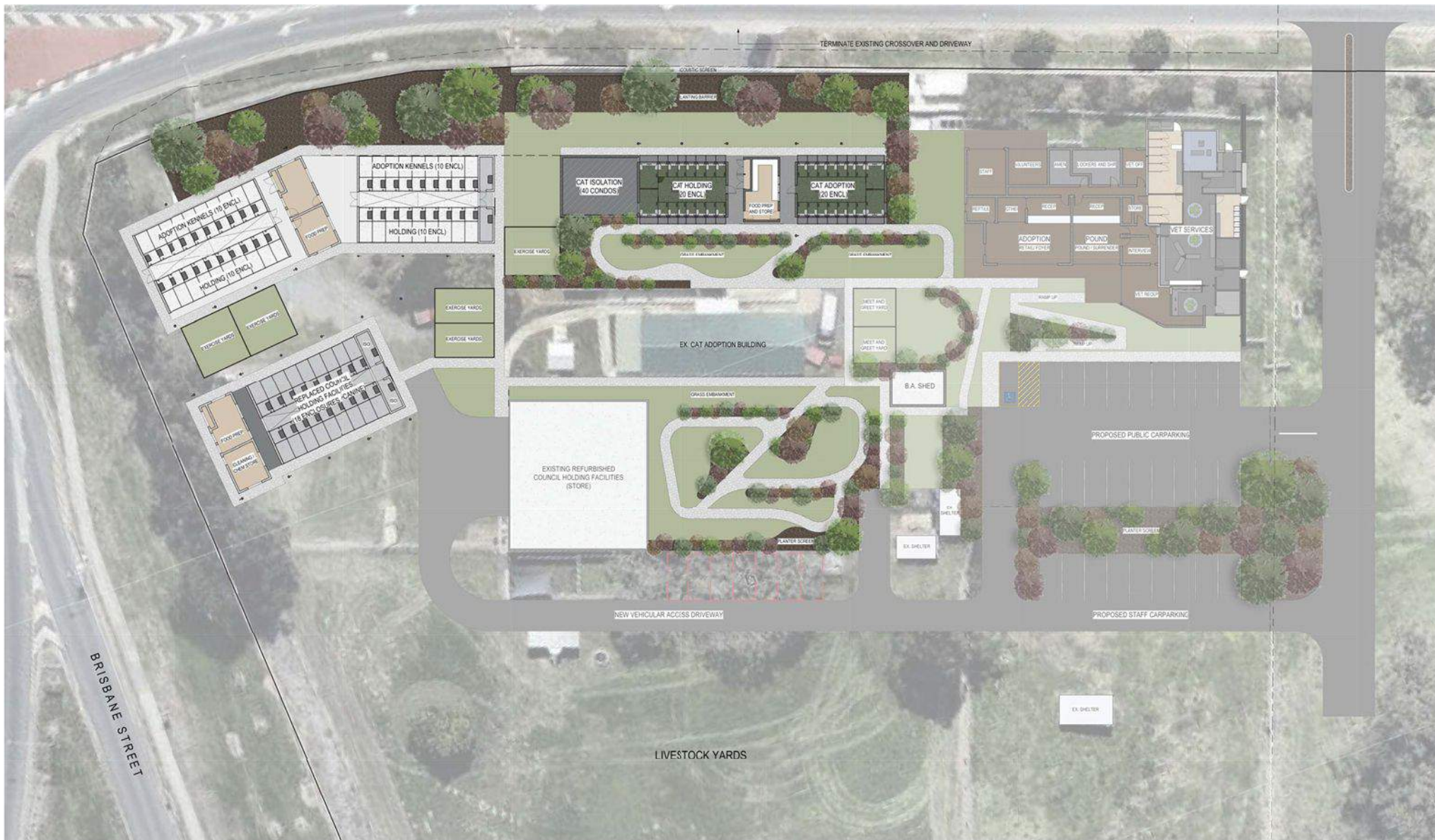
20160166 IPSWICH POUND REDEVELOPMENT

DRAWN BY: RB / MH | 1:200 at A1 | REVISION P1 | 19 APRIL 2017

DISCLAIMER

This is an artistic impression and is indicative only. Depictions of the following, including but not limited to: colours, equipment, finishes, fixtures, furniture, materials, light fixtures and lighting conditions, are not necessarily a true representation of the final product.





DISCLAIMER

This is an artistic impression and is indicative only. Depictions of the following, including but not limited to: colours, equipment, finishes, fixtures, furniture, materials, light fixtures and lighting conditions, are not necessarily a true representation of the final product.





DISCLAIMER

This is an artistic impression and is indicative only. Depictions of the following, including but not limited to: colours, equipment, finishes, fixtures, furniture, materials, light fixtures and lighting conditions, are not necessarily a true representation of the final product.





PROPOSED SITE PLAN - OPTION C - STAGE 1

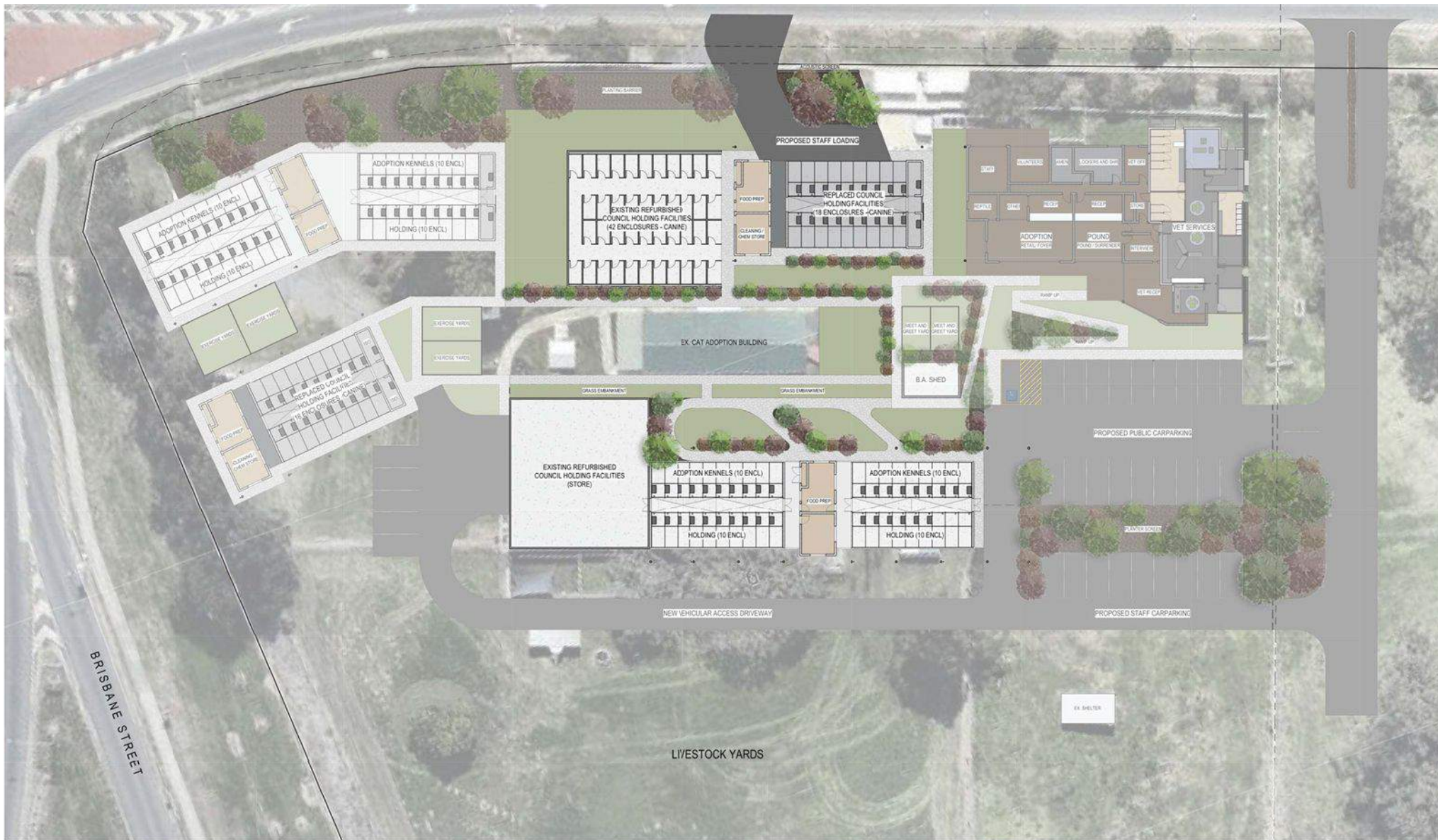
20160166 IPSWICH POUND REDEVELOPMENT

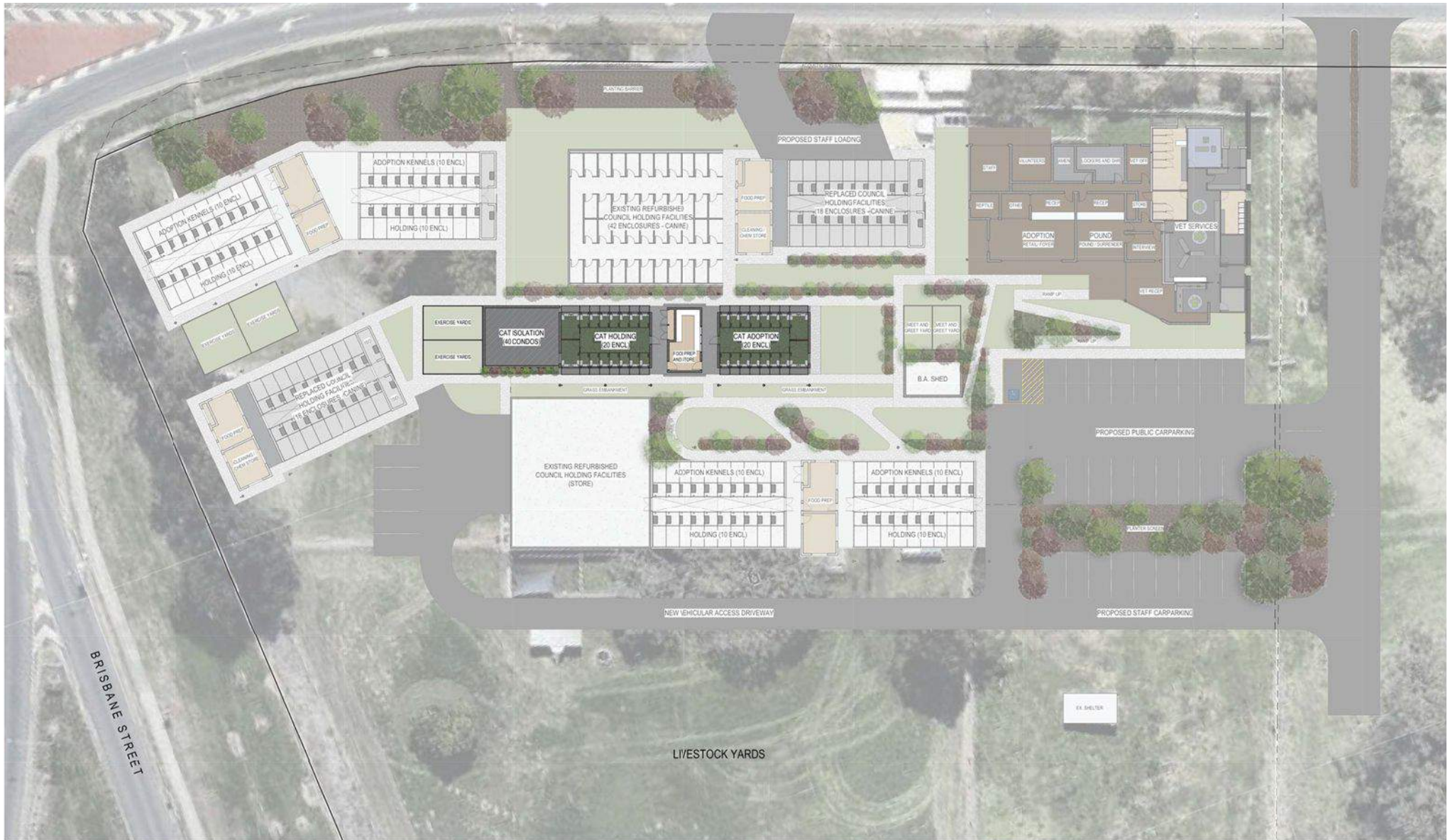
DRAWN BY: RB / MH | 1:200 at A1 | REVISION P1 | 19 APRIL 2017

DISCLAIMER

This is an artistic impression and is indicative only. Depictions of the following, including but not limited to: colours, equipment, finishes, fixtures, furniture, materials, light fixtures and lighting conditions, are not necessarily a true representation of the final product.







DISCLAIMER

This is an artistic impression and is indicative only. Depictions of the following, including but not limited to: colours, equipment, finishes, fixtures, furniture, materials, light fixtures and lighting conditions, are not necessarily a true representation of the final product.



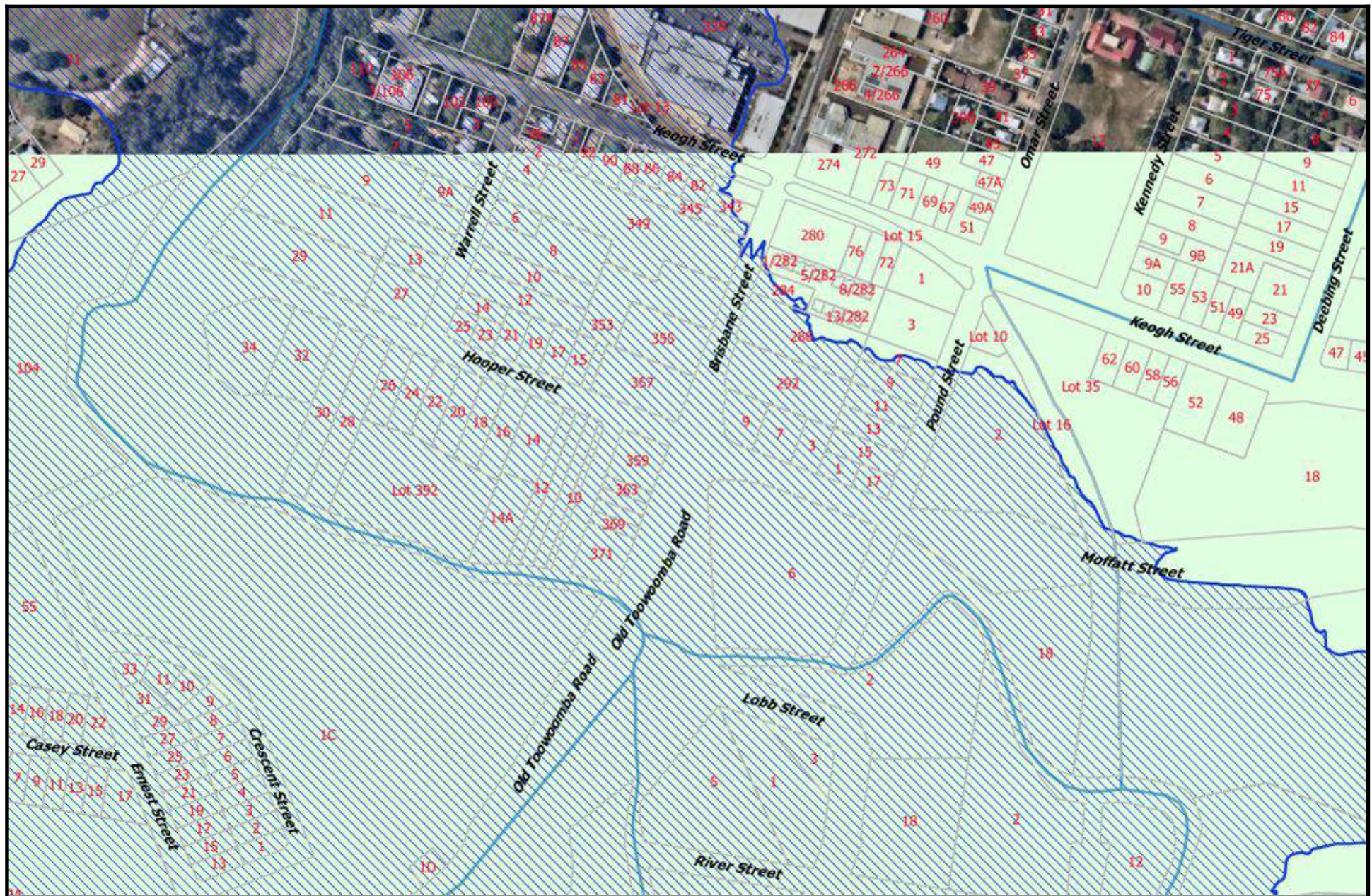


DISCLAIMER

This is an artistic impression and is indicative only. Depictions of the following, including but not limited to: colours, equipment, finishes, fixtures, furniture, materials, light fixtures and lighting conditions, are not necessarily a true representation of the final product.







1974 flood mapping

Scale 1:3,946
Printed Date: 3 Jul 2017



1974 flood mapping

Scale 1:3,946
Printed Date: 3 Jul 2017

Animal ID	Consult ID	Reason For Consult	Type	Name	Vet	Location	Kennel	Consult Date	Hold Date	Next Status	Next Status Date	Current Status	Status Date	Diagnosis	Differential Diagnosis
328493	345200	Cat Flu / Uri	Cat	Leo		Cat Adoption 2		18-Jun-2017		Adopted		Adopted	30-Jun-2017		
771643	317580	Cat Flu / Uri	Cat	Berno		Cat Iso		02-Mar-2017		Euthanised		Euthanised	20-Mar-2017		
685872	317881	Cat Flu / Uri	Cat	Rocky		Cat Impound	24	03-Mar-2017		Adopted		Adopted	17-Mar-2017		
676316	305943	Cat Flu / Uri	Cat	Zara		Cat Iso		16-Jan-2017		Adopted		Adopted	17-Feb-2017		
677717	303782	Cat Flu / Uri	Cat	Mabel		Cat Iso		07-Jan-2017		Adopted		Adopted	11-Feb-2017		
677717	305944	Cat Flu / Uri	Cat	Mabel		Cat Iso		16-Jan-2017		Adopted		Adopted	11-Feb-2017		
677734	305945	Cat Flu / Uri	Cat	Mindy		Cat Iso		16-Jan-2017		Adopted		Adopted	21-Jan-2017		
678724	302465	Cat Flu / Uri	Cat	Kai		Cat Impound		02-Jan-2017		Adopted		Adopted	14-Jan-2017		
678726	302673	Cat Flu / Uri	Cat	Coral		Cat Impound		03-Jan-2017		Adopted		Adopted	14-Jan-2017		
678730	302585	Cat Flu / Uri	Cat	Bastian		Cat Impound		02-Jan-2017		Adopted		Adopted	14-Jan-2017		
678924	302459	Cat Flu / Uri	Cat	Vin		Cat Impound		01-Jan-2017		Adopted		Adopted	21-Jan-2017		
678932	302445	Cat Flu / Uri	Cat	Crookshanks		Cat Impound		02-Jan-2017		Adopted		Adopted	11-Feb-2017		
678950	302463	Cat Flu / Uri	Cat	Tad		Cat Impound		02-Jan-2017		Adopted		Adopted	14-Jan-2017		
679273	302670	Cat Flu / Uri	Cat	Apache		Cat Impound		03-Jan-2017		Adopted		Adopted	23-Jan-2017		
679273	303944	Cat Flu / Uri	Cat	Apache		Cat Iso		04-Jan-2017		Adopted		Adopted	23-Jan-2017		
679418	303104	Cat Flu / Uri	Cat	Daria		Cat Impound		04-Jan-2017		Adopted		Adopted	04-Feb-2017		
679418	305947	Cat Flu / Uri	Cat	Daria		Cat Iso		16-Jan-2017		Adopted		Adopted	04-Feb-2017		
679662	303148	Cat Flu / Uri	Cat	Patches		Cat Impound		04-Jan-2017		Adopted		Adopted	27-Jan-2017		
679662	305948	Cat Flu / Uri	Cat	Patches		Cat Iso		16-Jan-2017		Adopted		Adopted	27-Jan-2017		
679846	303573	Cat Flu / Uri	Cat	Primrose		Cat Impound		05-Jan-2017		Adopted		Transfer Out	30-Jan-2017		
679846	305951	Cat Flu / Uri	Cat	Primrose		Cat Iso		16-Jan-2017		Adopted		Transfer Out	30-Jan-2017		
680761	302636	Cat Flu / Uri	Cat	Dory		Cat Impound		03-Jan-2017		Adopted		Adopted	14-Jan-2017		
680772	305953	Cat Flu / Uri	Cat	Ethereal		Cat Iso		16-Jan-2017		Adopted		Adopted	20-Feb-2017		
680772	311512	Cat Flu / Uri	Cat	Ethereal		Cat Adoption 1		06-Feb-2017		Adopted		Adopted	20-Feb-2017		
680773	305955	Cat Flu / Uri	Cat	Marlin		Cat Iso		16-Jan-2017		Adopted		Adopted	03-Feb-2017		
681328	305950	Cat Flu / Uri	Cat	Coco		Cat Iso		25-Jan-2017		Euthanised		Euthanised	16-Feb-2017		
681350	305956	Cat Flu / Uri	Cat	Elvis		Cat Iso		16-Jan-2017		Adopted		Adopted	28-Jan-2017		
681388	305959	Cat Flu / Uri	Cat	Jasper		Cat Iso		16-Jan-2017		Adopted		Adopted	12-Feb-2017		
681757	305960	Cat Flu / Uri	Cat	Lillybean		Cat Iso		16-Jan-2017		Adopted		Adopted	18-Feb-2017		
682388	307435	Cat Flu / Uri	Cat	Sophia		Cat Adoption 1		22-Jan-2017		Adopted		Adopted	11-Feb-2017		
682620	307015	Cat Flu / Uri	Cat	Banjo		Cat Adoption 1		20-Jan-2017		Adopted		Adopted	08-Feb-2017		
682620	308299	Cat Flu / Uri	Cat	Banjo		Cat Iso		25-Jan-2017		Adopted		Adopted	08-Feb-2017		
682884	308585	Cat Flu / Uri	Cat	River		Cat Iso		19-Jan-2017		Adopted		Adopted	08-Apr-2017		
682884	308298	Cat Flu / Uri	Cat	River		Cat Iso		25-Jan-2017		Adopted		Adopted	08-Apr-2017		
683213	307978	Cat Flu / Uri	Cat	Liso		Cat Iso		24-Jan-2017		Adopted		Adopted	03-Feb-2017		
683393	306921	Cat Flu / Uri	Cat	Maxi		Cat Iso		20-Jan-2017		Adopted		Adopted	01-Feb-2017		
683402	309279	Cat Flu / Uri	Cat	Claudia		Cat Impound		29-Jan-2017		Adopted		Adopted	24-Feb-2017		
683417	308301	Cat Flu / Uri	Cat	Gandalf		Cat Iso		25-Jan-2017		Reclaimed		Reclaimed	28-Feb-2017		
683614	309276	Cat Flu / Uri	Cat	Muffin		Cat Impound		29-Jan-2017		Adopted Offsite		Adopted Offsite	01-Jul-2017		
684083	307393	Cat Flu / Uri	Cat	Kiarah		Cat Impound		22-Jan-2017		Adopted		Adopted	19-Mar-2017		
684428	309353	Cat Flu / Uri	Cat	Omex		Cat Iso		25-Jan-2017		Euthanised		Euthanised	17-Feb-2017		
684547	310928	Cat Flu / Uri	Cat	Cindy		Cat Impound		02-Feb-2017		Adopted		Adopted	08-Apr-2017		
684550	309355	Cat Flu / Uri	Cat	Missy		Cat Iso		25-Jan-2017		Adopted		Adopted	23-Feb-2017		
684551	309352	Cat Flu / Uri	Cat	Dexter		Cat Iso		25-Jan-2017		Adopted		Adopted	03-Feb-2017		
684794	308817	Cat Flu / Uri	Cat	Sugar		Cat Iso		27-Jan-2017		Adopted		Adopted	10-May-2017		
684794	310281	Cat Flu / Uri	Cat	Sugar		Cat Iso		01-Feb-2017		Adopted		Adopted	10-May-2017		
684843	310929	Cat Flu / Uri	Cat	Princess		Cat Impound		02-Feb-2017		Adopted		Adopted	17-Feb-2017		
684848	308882	Cat Flu / Uri	Cat	Sandy		Cat Impound		31-Jan-2017		Adopted		Adopted	14-Feb-2017		
685086	311129	Cat Flu / Uri	Cat	Georgia		Cat Impound		01-Feb-2017		Adopted		Adopted	03-May-2017		
685091	309273	Cat Flu / Uri	Cat	Sweetheart		Cat Impound		29-Jan-2017		Adopted		Adopted	09-Apr-2017		
685097	308818	Cat Flu / Uri	Cat	Ginger		Cat Iso		27-Jan-2017		Adopted		Adopted	13-Feb-2017		
685223	307409	Cat Flu / Uri	Cat	Mango		Cat Iso		22-Jan-2017		Adopted		Adopted	01-Apr-2017		
685687	307911	Cat Flu / Uri	Cat	Oliver		Cat Iso		24-Jan-2017		Adopted		Adopted	01-Apr-2017		
685981	310931	Cat Flu / Uri	Cat	Winif		Cat Iso		03-Feb-2017		Adopted		Adopted	04-Mar-2017		
685983	310930	Cat Flu / Uri	Cat	Bondi		Cat Impound		03-Feb-2017		Adopted		Adopted	02-Apr-2017		
685983	311369	Cat Flu / Uri	Cat	Bondi		Cat Impound		06-Feb-2017		Adopted		Adopted	02-Apr-2017		
685985	310801	Cat Flu / Uri	Cat	Tommy		Cat Impound		02-Feb-2017		Euthanised		Euthanised	10-Mar-2017		
685986	310932	Cat Flu / Uri	Cat	Sydney		Cat Iso		03-Feb-2017		Adopted		Adopted	04-Mar-2017		
685987	310934	Cat Flu / Uri	Cat	Fen		Cat Iso		04-Feb-2017		Adopted		Adopted	04-Mar-2017		
685988	310805	Cat Flu / Uri	Cat	Mouche		Cat Iso		03-Feb-2017		Adopted		Adopted	26-Feb-2017		
685989	310803	Cat Flu / Uri	Cat	Smudoe		Cat Iso		03-Feb-2017		Adopted		Adopted	26-Feb-2017		
686426	315812	Cat Flu / Uri	Cat	Mumma Cat		In Foster		23-Feb-2017		Euthanised		Euthanised	18-Apr-2017		
686507	312193	Cat Flu / Uri	Cat	Pearl		Cat Adoption 2		06-Feb-2017		Adopted		Adopted	04-Apr-2017		
686526	311547	Cat Flu / Uri	Cat	Gidget		Cat Iso		06-Feb-2017		Adopted		Adopted	04-Jul-2017		
686878	320334	Cat Flu / Uri	Cat	Prince Harry		In Foster		13-Mar-2017		Adopted		Adopted	29-Jun-2017		
687334	319925	Cat Flu / Uri	Cat	Gina		Office		12-Mar-2017		Adopted		Adopted	07-May-2017		
687334	320332	Cat Flu / Uri	Cat	Gina		Office		13-Mar-2017		Adopted		Adopted	07-May-2017		
687344	316771	Cat Flu / Uri	Cat	Marco		In Foster		01-Feb-2017		Adopted		Adopted	23-Feb-2017		
687346	316772	Cat Flu / Uri	Cat	Meeka		Cat Iso		27-Feb-2017		Adopted		Adopted	01-Apr-2017		
687875	316933	Cat Flu / Uri	Cat	Toby		Cat Impound		28-Feb-2017		Adopted		Adopted	03-Jun-2017		
687875	321170	Cat Flu / Uri	Cat	Toby		Cat Iso		17-Mar-2017		Adopted		Adopted	03-Jun-2017		
688667	313143	Cat Flu / Uri	Cat	Rascal		Cat Impound		13-Feb-2017		Adopted		Adopted	19-Mar-2017		
688667	313369	Cat Flu / Uri	Cat	Rascal		Cat Iso		13-Feb-2017		Adopted		Adopted	19-Mar-2017		
688667	316764	Cat Flu / Uri	Cat	Rascal		Cat Iso		27-Feb-2017		Adopted		Adopted	19-Mar-2017		
688873	314439	Cat Flu / Uri	Cat	Phoebe		Cat Impound		18-Feb-2017		Adopted		Adopted	02-Mar-2017		
689445	314563	Cat Flu / Uri	Cat	Gunther		Cat Iso		19-Feb-2017		Adopted		Adopted	14-Mar-2017		
689767	315151	Cat Flu / Uri	Cat	June		Cat Adoption 1		21-Feb-2017		Adopted		Adopted	10-Mar-2017		
690101	317885	Cat Flu / Uri	Cat	Sol		Cat Impound		03-Mar-2017		Adopted		Adopted	08-Apr-2017		
690186	320336	Cat Flu / Uri	Cat	Misty Snowball		In Foster		13-Mar-2017		Adopted		Adopted	08-Apr-2017		
690188	323899	Cat Flu / Uri	Cat	Fiona		Cat Adoption 2		27-Mar-2017		Adopted		Adopted	12-Apr-2017		
690190	316769	Cat Flu / Uri	Cat	Mercury		Cat Adoption 1		27-Feb-2017		Adopted		Adopted	10-Mar-2017		
690287	317285	Cat Flu / Uri	Cat	Nene		Cat Adoption 1		03-Mar-2017		Adopted		Adopted	08-Apr-2017		
690623	325487	Cat Flu / Uri	Cat	Khaleesi		In Foster		06-Mar-2017		Adopted		Adopted	05-Apr-2017		
690623	318577	Cat Flu / Uri	Cat	Khaleesi		In Foster		06-Mar-2017		Adopted		Adopted	05-Apr-2017		
690625	318576	Cat Flu / Uri	Cat	Jasmine		In Foster		06-Mar-2017		Adopted		Adopted	07-Apr-2017		
690627	318578	Cat Flu / Uri	Cat	Margo		In Foster		06-Mar-2017		Adopted		Adopted	07-Apr-2017		
690627	325491	Cat Flu / Uri	Cat	Margo		In Foster		06-Mar-2017		Adopted		Adopted	07-Apr-2017		
690726	318728	Cat Flu / Uri	Cat	Calix		Cat Iso		07-Mar-2017		Adopted		Adopted	03-Apr-2017		
690726	321193	Cat Flu / Uri	Cat	Carly		Cat Iso		17-Mar-2017		Adopted		Adopted	03-Apr-2017		
690897	317572	Cat Flu / Uri	Cat	Rainbow Dash		Cat Adoption 2		02-Mar-2017		Adopted		Adopted	20-Mar-2017		
690925	317284	Cat Flu / Uri	Cat	Mickey		Cat Impound		01-Mar-2017		Adopted		Adopted	01-Apr-2017		
690955	317581	Cat Flu / Uri	Cat	Twinkle		Cat Impound		01-Mar-2017		Adopted		Adopted	01-Mar-2017		
691160	317286	Cat Flu / Uri	Cat	Link		Cat Impound		01-Mar-2017		Adopted		Adopted	18-Mar-2017		
691281	316936	Cat Flu / Uri	Cat	Frank		Cat Impound		28-Feb-2017		Adopted		Adopted	11-Mar-2017		
691286	316938	Cat Flu / Uri	Cat	Diesel		Cat Adoption 1		28-Feb-2017		Adopted		Adopted	07-Mar-2017		
691364	318705	Cat Flu / Uri	Cat	Rainbow		Cat Iso		07-Mar-2017		Adopted		Adopted	02-Apr-2017		
691482	317571	Cat Flu / Uri	Cat	Ragnar		Cat Adoption 3		19-Mar-2017		Adopted		Adopted	04-Apr-2017		
691482	321716	Cat Flu / Uri	Cat	Ragnar		Cat Iso		19-Mar-2017		Adopted		Adopted	04-Apr-2017		
691833	317877	Cat Flu / Uri	Cat	Eddie		Cat Impound		03-Mar-2017		Adopted		Adopted	11-Jun-2017		
691845	320305	Cat Flu / Uri	Cat	Jane		Cat Adoption 1		13-Mar-2017		Adopted		Adopted	05-May-2017		Surgery - Suture Removal
691882	319334	Cat Flu / Uri	Cat												

995563	321719	Cat Flu / Uri	Cat		Cat Impound	35	19-Mar-2017			Euthanised	07-Apr-2017
995947	323897	Cat Flu / Uri	Cat	Emmara	Cat Iso		27-Mar-2017			Adopted	09-Apr-2017
996001	323406	Cat Flu / Uri	Cat	Helo	Cat Impound	27	24-Mar-2017			Adopted	26-May-2017
996447	322461	Cat Flu / Uri	Cat	Pan	Cat Impound	11	21-Mar-2017			Adopted	15-Apr-2017
996455	323993	Cat Flu / Uri	Cat	Lon Snow	Cat Adoption 2		23-Mar-2017			Adopted	01-May-2017
996465	329034	Cat Flu / Uri	Cat	Lon Snow	Cat Adoption 1		20-Apr-2017			Adopted	07-May-2017
996468	323992	Cat Flu / Uri	Cat	Mishka	Cat Adoption 1		28-Mar-2017			Adopted	30-May-2017
996490	323407	Cat Flu / Uri	Cat	Tonks	Cat Impound	27	24-Mar-2017			Adopted	08-Apr-2017
996498	325121	Cat Flu / Uri	Cat	Tess	Cat Impound		32-Apr-2017			Adopted	18-Apr-2017
996658	323408	Cat Flu / Uri	Cat	Beba	Cat Impound	27	24-Mar-2017			Hold in Foster	27-Jul-2017
996663	323409	Cat Flu / Uri	Cat	Amy	Cat Impound	27	24-Mar-2017			Adopted	05-Apr-2017
996663	325333	Cat Flu / Uri	Cat	Amy	Cat Iso		03-Apr-2017			Adopted	05-Apr-2017
996704	323410	Cat Flu / Uri	Cat	Ace	Cat Impound	27	24-Mar-2017			Adopted	29-Apr-2017
996706	323411	Cat Flu / Uri	Cat		Cat Impound	27	24-Mar-2017			Euthanised	01-Apr-2017
996766	323778	Cat Flu / Uri	Cat	Loti	Office		27-Mar-2017			Adopted	23-Apr-2017
996757	325318	Cat Flu / Uri	Cat	Maze	Cat Impound		03-Apr-2017			Adopted	02-May-2017
996757	326183	Cat Flu / Uri	Cat	Maze	Cat Impound		06-Apr-2017			Adopted	02-May-2017
997048	323693	Cat Flu / Uri	Cat	Lili	Cat Impound	01	27-Mar-2017			Adopted	17-Apr-2017
997216	323336	Cat Flu / Uri	Cat	Mason	Cat Impound	33	03-Apr-2017			Adopted	23-May-2017
997282	323780	Cat Flu / Uri	Cat	Gree	Cat Adoption 1		27-Mar-2017			Adopted	23-Apr-2017
997383	323477	Cat Flu / Uri	Cat	Frankie	Cat Impound		26-Mar-2017			Adopted	02-May-2017
997599	325123	Cat Flu / Uri	Cat	Wendy	Cat Impound		02-Apr-2017			Adopted	22-Apr-2017
997613	324463	Cat Flu / Uri	Cat	Penelope	Cat Adoption 3		29-Mar-2017			Adopted	04-Apr-2017
997614	325336	Cat Flu / Uri	Cat	Mervin	Cat Impound	29	03-Apr-2017			Adopted	24-Apr-2017
997624	325118	Cat Flu / Uri	Cat	Silas	Cat Impound		02-Apr-2017			Adopted	07-May-2017
997644	325319	Cat Flu / Uri	Cat	Timothy	Cat Impound		03-Apr-2017			Adopted	27-Apr-2017
997661	326878	Cat Flu / Uri	Cat	Caesar	Cat Iso		07-Apr-2017			Adopted	19-Apr-2017
997663	326877	Cat Flu / Uri	Cat	Sweetiee	Cat Iso		07-Apr-2017			Adopted	18-Apr-2017
997807	325111	Cat Flu / Uri	Cat	Cora	Cat Impound		12-Apr-2017			Adopted	01-May-2017
997838	323697	Cat Flu / Uri	Cat		Cat Impound		27-Mar-2017			Euthanised	13-Apr-2017
997838	327872	Cat Flu / Uri	Cat		Cat Iso		13-Apr-2017			Euthanised	13-Apr-2017
998030	325120	Cat Flu / Uri	Cat	Carl	Cat Impound		02-Apr-2017			Adopted	22-Jun-2017
998223	328460	Cat Flu / Uri	Cat	Sabrina	Cat Impound		03-Apr-2017			Adopted	08-May-2017
998243	325326	Cat Flu / Uri	Cat	Fern	Cat Impound		03-Apr-2017			Adopted	22-Apr-2017
998469	327101	Cat Flu / Uri	Cat	Oliver	Cat Adoption 3		10-Apr-2017			Adopted	22-Apr-2017
998549	325331	Cat Flu / Uri	Cat	Bonnie	Cat Impound		03-Apr-2017			Available for Adoption in Foster	06-Aug-2017
998703	325327	Cat Flu / Uri	Cat		Cat Impound		03-Apr-2017			Euthanised	10-Apr-2017
998713	325330	Cat Flu / Uri	Cat	Bood	Cat Impound		03-Apr-2017			Adopted	17-May-2017
998800	325122	Cat Flu / Uri	Cat	Nightshade	Cat Impound		02-Apr-2017			Adopted	23-Apr-2017
998863	326013	Cat Flu / Uri	Cat	Carl	Cat Impound		06-Apr-2017			Adopted	11-May-2017
998864	325939	Cat Flu / Uri	Cat	Jacob	Cat Impound		03-Apr-2017			Adopted	28-May-2017
999409	325178	Cat Flu / Uri	Cat	Princess Lea	Cat Impound	01	06-Apr-2017			Adopted	05-May-2017
999600	327239	Cat Flu / Uri	Cat	Cindy	Cat Impound	34	11-Apr-2017			Adopted	20-May-2017
999600	327553	Cat Flu / Uri	Cat	Cindy	Cat Impound	34	12-Apr-2017			Adopted	20-May-2017
999944	330737	Cat Flu / Uri	Cat	Jelly	Cat Iso		27-Apr-2017			Adopted	13-May-2017
999945	329192	Cat Flu / Uri	Cat	Jewel	Cat Adoption 4		03-Apr-2017			Adopted	01-Jun-2017
999945	331039	Cat Flu / Uri	Cat	Jewel	Cat Iso		26-Apr-2017			Adopted	18-Jun-2017
1000232	327551	Cat Flu / Uri	Cat	Archie	Cat Impound		12-Apr-2017			Adopted	27-May-2017
1000475	330079	Cat Flu / Uri	Cat	Molly	Cat Iso		24-Apr-2017			Adopted	12-May-2017
1000479	328182	Cat Flu / Uri	Cat	Alex	Cat Impound	19	16-Apr-2017			Euthanised	21-Apr-2017
1000521	329368	Cat Flu / Uri	Cat	Tia	Cat Adoption 4		12-Apr-2017			Adopted	01-May-2017
1000533	329187	Cat Flu / Uri	Cat	Corvo	Cat Impound	23	20-Apr-2017			Adopted	13-May-2017
1000534	328181	Cat Flu / Uri	Cat		Cat Impound	06	16-Apr-2017			Euthanised	20-Apr-2017
1000680	327555	Cat Flu / Uri	Cat	Sammy	Cat Impound	32	12-Apr-2017			Adopted	07-May-2017
1000680	327844	Cat Flu / Uri	Cat	Sammy	Cat Iso		12-Apr-2017			Adopted	07-May-2017
1000863	328180	Cat Flu / Uri	Cat	Anzelica	Cat Impound	04	16-Apr-2017			Euthanised	24-May-2017
1000906	328492	Cat Flu / Uri	Cat	Amelia	Cat Impound	27	17-Apr-2017			Adopted	13-May-2017
1001160	328186	Cat Flu / Uri	Cat	Duchess	Cat Impound		16-Apr-2017			Adopted	29-Apr-2017
1001225	330403	Cat Flu / Uri	Cat	Noah	Cat Adoption 2		26-Apr-2017			Adopted	07-May-2017
1001327	328558	Cat Flu / Uri	Cat	Belle	Cat Impound	10	16-Apr-2017			Adopted	05-May-2017
1001230	328559	Cat Flu / Uri	Cat	Clare	Cat Impound		26-Apr-2017			Adopted	04-May-2017
1001235	328493	Cat Flu / Uri	Cat	Dean	Cat Impound	08	17-Apr-2017			Euthanised	21-Apr-2017
1001609	330400	Cat Flu / Uri	Cat	Minerva	Cat Adoption 2		26-Apr-2017			Adopted	14-May-2017
1001611	330081	Cat Flu / Uri	Cat	Tigga	Cat Iso	16	24-Apr-2017			Adopted	25-May-2017
1001895	329188	Cat Flu / Uri	Cat	Loon	Cat Impound	09	20-Apr-2017			Adopted	20-May-2017
1001895	334925	Cat Flu / Uri	Cat	Loon	Cat Adoption 2		16-May-2017			Adopted	20-May-2017
1001896	329189	Cat Flu / Uri	Cat	Benny	Cat Impound	09	20-Apr-2017			Adopted	23-May-2017
1002071	330052	Cat Flu / Uri	Cat		Cat Impound		24-Apr-2017			Euthanised	24-Apr-2017
1002142	330051	Cat Flu / Uri	Cat	Belle	Cat Iso	12	24-Apr-2017			Adopted Offsite	14-Jul-2017
1002292	330341	Cat Flu / Uri	Cat	Artemis	Cat Impound	32	03-Apr-2017			Adopted	01-Jun-2017
1002711	331767	Cat Flu / Uri	Cat	Cindy	Cat Adoption 3		02-May-2017			Adopted	13-May-2017
1002928	331127	Cat Flu / Uri	Cat	Maggie	Cat Adoption 3		29-Apr-2017			Adopted	09-Jun-2017
1002928	334740	Cat Flu / Uri	Cat	Maggie	Cat Iso	25	15-May-2017			Adopted	09-Jun-2017
1002930	331126	Cat Flu / Uri	Cat	Bindi	Cat Impound		29-Apr-2017			Adopted	28-Jun-2017
1002931	332437	Cat Flu / Uri	Cat	Pandora	Cat Adoption 3		13-May-2017			Adopted	01-Jun-2017
1002961	331243	Cat Flu / Uri	Cat	Dolly	Cat Impound	20	30-Apr-2017			Adopted	24-Jun-2017
1002999	331062	Cat Flu / Uri	Cat	Sooty	Cat Impound		29-Apr-2017			Reclaimed	29-Apr-2017
1003145	331237	Cat Flu / Uri	Cat	Arrika	Cat Impound	17	30-Apr-2017			Adopted	16-Jun-2017
1003146	335473	Cat Flu / Uri	Cat	Chloe	In Foster		01-May-2017			Adopted	07-Jun-2017
1003147	335475	Cat Flu / Uri	Cat	Frank	In Foster		01-May-2017			Adopted	07-Jun-2017
1003148	335477	Cat Flu / Uri	Cat	Coco	In Foster		01-May-2017			Adopted Offsite	07-Jul-2017
1003149	335471	Cat Flu / Uri	Cat	Bella	In Foster		01-May-2017			Adopted	07-Jun-2017
1003240	331240	Cat Flu / Uri	Cat	Pressum	Cat Impound	19	30-Apr-2017			Adopted	27-May-2017
1003241	331241	Cat Flu / Uri	Cat	Zebe	Cat Impound	19	30-Apr-2017			Adopted	14-May-2017
1003242	331244	Cat Flu / Uri	Cat	Tilly	Cat Impound	21	30-Apr-2017			Adopted	03-Jun-2017
1003242	334143	Cat Flu / Uri	Cat	Tilly	Cat Impound	21	12-May-2017			Adopted	03-Jun-2017
1003255	331440	Cat Flu / Uri	Cat	Moone	Cat Impound	33	01-May-2017			Adopted	02-Jun-2017
1003369	332458	Cat Flu / Uri	Cat	Tabittha	Cat Impound	26	05-May-2017			Adopted	27-May-2017
1003371	332527	Cat Flu / Uri	Cat	Mew	Cat Impound	08	28-Apr-2017			Adopted	14-May-2017
1003377	331442	Cat Flu / Uri	Cat	Lulia	Cat Impound	31	01-May-2017			Euthanised	16-May-2017
1003593	332454	Cat Flu / Uri	Cat	Mushroom	Cat Impound	12	04-May-2017			Adopted	27-May-2017
1003596	331443	Cat Flu / Uri	Cat	Oreo (airis)	Cat Impound	34	01-May-2017			Adopted	16-Jun-2017
1003715	333824	Cat Flu / Uri	Cat	Mitchy	Cat Iso		11-May-2017			Adopted	10-Jun-2017
1003715	334694	Cat Flu / Uri	Cat	Mitchy	Cat Iso		14-May-2017			Adopted	10-Jun-2017
1003742	335477	Cat Flu / Uri	Cat	Joe	Cat Impound	24	23-May-2017			Adopted	23-Jul-2017
1003742	340231	Cat Flu / Uri / Recheck	Cat	Joe	Kelly Larden	Cat Iso	24	08-Jun-2017		Adopted	23-Jul-2017
1003742	341058	Cat Flu / Uri / Recheck	Cat	Joe	Kelly Larden	Cat Iso	24	12-Jun-2017		Adopted	23-Jul-2017
1003870	332111	Cat Flu / Uri	Cat	Nate	Cat Iso	03	03-May-2017			Adopted	12-Jun-2017
1003971	332450	Cat Flu / Uri	Cat	Pandora	Cat Impound		05-May-2017			Adopted	01-Jun-2017
1003997	332466	Cat Flu / Uri	Cat	Miguel	Cat Impound		04-May-2017			Adopted	29-May-2017
1004015	332570	Cat Flu / Uri	Cat	Milly	Cat Adoption 4		05-May-2017			Adopted	05-May-2017
1004116	333812	Cat Flu / Uri	Cat	Freddie	Cat Iso	12	11-May-2017			Adopted	01-Aug-2017
1004163	331444	Cat Flu / Uri	Cat	Lila	Cat Impound	13	01-May-2017			Adopted	20-May-2017
1004163	332406	Cat Flu / Uri	Cat	Lila	Cat Impound	13	04-May-2017			Adopted	20-May-2017
1004163	334692	Cat Flu / Uri	Cat	Lila	Cat Impound	13	15-May-2017			Adopted	20-May-2017
1004532	332371	Cat Flu / Uri	Cat	Claudia	Cat Impound		04-May-2017			Adopted	04-Jul-2017
1004533	332401	Cat Flu / Uri	Cat	Humphrey	Cat Impound	01	05-May-2017			Adopted	16-Jul-2017
1004534	332441	Cat Flu / Uri	Cat	Misty	Cat Impound	35	04-May-2017			Adopted	08-Jun-2017
1004534	335953	Cat Flu / Uri / Anorexia	Cat	Misty	Cat Iso	13	21-May-2017			Adopted	08-Jun-2017
1004606	333226	Cat Flu / Uri	Cat	Tabittha	Cat Iso		08-May-2017			Adopted	27-Jun-2017
1004606	340219	Cat Flu / Uri / Recheck	Cat	Tabittha	Kelly Larden	Cat Iso	08-Jun-2017			Adopted	27-Jun-2017
1004607	333227	Cat Flu / Uri	Cat	Timmy	Cat Iso		08-May-2017			Euthanised	01-Jun-2017
1004706	334166	Cat Flu / Uri	Cat	Caspian	Cat Adoption 1		13-May-2017			Adopted	05-Jun-2017
1004782	333228	Cat Flu / Uri	Cat	Zoe	Cat Iso		08-May-2017			Adopted	24-May-2017
1004818	334698	Cat Flu / Uri	Cat	Cupcake	Cat Iso	05	15-May-2017			Adopted	30-May-2017
1004930	334158	Cat Flu / Uri	Cat	Pixels	Cat Adoption 3		13-May-2017			Adopted	02-Jul-2017
1004931	333229	Cat Flu / Uri	Cat	Pac-Man	Cat Adoption 2		09-May-2017			Adopted	02-Jul-2017
1005054	334142	Cat Flu / Uri	Cat	Billy	Cat Impound	30	12-May-2017			Adopted	30-Jun-2017
1005075	334172	C									

1008250	333315	Cat Flu / Uri	Cat	Igloo		Cat Impound	10	09-May-2017				Adopted	11-Jun-2017	
1008251	333316	Cat Flu / Uri	Cat	Mew		Cat Impound	10	09-May-2017				Adopted	03-Jul-2017	
1008256	335685	Cat Flu / Uri	Cat	Manson		Cat Iso	08	19-May-2017				Euthanised	24-May-2017	
1008256	335962	Cat Flu / Uri	Cat	Manson		Cat Iso	08	21-May-2017				Euthanised	24-May-2017	
1008620	335224	Cat Flu / Uri	Cat	Manus		Cat Iso	21	22-May-2017				Euthanised	24-May-2017	Anorexia
1008725	336217	Cat Flu / Uri	Cat	Peanut		Cat Impound	17	22-May-2017				Adopted	18-Jun-2017	
1008853	335975	Cat Flu / Uri	Cat	Millie		Cat Adoption 2	21	21-May-2017				Adopted	08-Jun-2017	
1007054	334675	Cat Flu / Uri	Cat	Noelle		Cat Impound	29	15-May-2017				Adopted	04-Jun-2017	
1007059	336214	Cat Flu / Uri	Cat	Harvey		Cat Impound	06	26-May-2017				Adopted	09-Jul-2017	
1007059	340222	Cat Flu / Uri / Recheck	Cat	Harvey	Kelly Lamden	Cat Iso	10	09-Jun-2017				Adopted	09-Jul-2017	
1007063	336215	Cat Flu / Uri	Cat	Charm		Cat Impound	06	22-May-2017				Adopted	29-Jun-2017	
1007074	336342	Cat Flu / Uri	Cat	Leo		Cat Adoption 3	23	23-May-2017				Adopted	23-Jul-2017	
1007074	340238	Cat Flu / Uri / Recheck	Cat	Leo	Kelly Lamden	Cat Iso	14	08-Jun-2017				Adopted	23-Jul-2017	
1007075	337051	Cat Flu / Uri	Cat	Harvey		Cat Impound	10	25-May-2017				Euthanised	23-Jun-2017	
1007106	336334	Cat Flu / Uri	Cat	Molly		Cat Adoption 2	23	23-May-2017				Euthanised	24-May-2017	
1007108	336223	Cat Flu / Uri	Cat	Bernard		Cat Iso	09	22-May-2017				Adopted	25-Jun-2017	Anorexia
1007108	341084	Cat Flu / Uri / Recheck	Cat	Bernard	Kelly Lamden	Cat Iso	09	12-Jun-2017				Adopted	25-Jun-2017	
1007372	336330	Cat Flu / Uri	Cat	Maria		Cat Adoption 2	23	23-May-2017				Euthanised	25-May-2017	
1007406	336338	Cat Flu / Uri	Cat	Ginger Tom		Cat Impound	04	23-May-2017				Adopted	01-Jul-2017	
1007400	338051	Cat Flu / Uri	Cat	Ginger Tom		Cat Iso	05	30-May-2017				Adopted	01-Jul-2017	
1007400	341062	Cat Flu / Uri / Recheck	Cat	Ginger Tom	Kelly Lamden	Cat Iso	27	12-Jun-2017				Adopted	01-Jul-2017	
1007479	336338	Cat Flu / Uri	Cat	Oscar		Cat Adoption 2	23	23-May-2017				Adopted	04-Jun-2017	
1007570	337264	Cat Flu / Uri	Cat	Smokov		Cat Adoption 3	26	26-May-2017				Adopted	15-Jun-2017	
1007618	336327	Cat Flu / Uri	Cat	Spice		Cat Impound	23	23-May-2017				Reclaimed	22-Jul-2017	
1007619	339965	Cat Flu / Uri / Anorexia	Cat	Spice	Kelly Lamden	Cat Iso	07	07-Jun-2017				Reclaimed	22-Jul-2017	
1007619	340239	Cat Flu / Uri / Recheck	Cat	Spice	Kelly Lamden	Cat Iso	07	08-Jun-2017				Reclaimed	22-Jul-2017	
1007619	341063	Cat Flu / Uri / Recheck	Cat	Spice	Kelly Lamden	Cat Iso	12	12-Jun-2017				Reclaimed	22-Jul-2017	
1007768	336478	Cat Flu / Uri	Cat	Smooch		Cat Impound	09	23-May-2017				Adopted	28-Jul-2017	
1007884	339872	Cat Flu / Uri	Cat	Victoria		Cat Iso	26	26-May-2017				Adopted	25-Jun-2017	
1007865	337057	Cat Flu / Uri	Cat	Cara		Cat Impound	25	25-May-2017				Adopted	22-Jul-2017	
1007865	340235	Cat Flu / Uri / Recheck	Cat	Cara	Kelly Lamden	Cat Iso	08	08-Jun-2017				Adopted	22-Jul-2017	
1007866	337059	Cat Flu / Uri	Cat	Evie		Cat Iso	25	25-May-2017				Adopted	21-Jul-2017	
1007866	340227	Cat Flu / Uri / Recheck	Cat	Evie	Kelly Lamden	Cat Iso	08	08-Jun-2017				Adopted	21-Jul-2017	
1007866	341064	Cat Flu / Uri / Recheck	Cat	Evie	Kelly Lamden	Cat Iso	12	12-Jun-2017				Adopted	21-Jul-2017	
1007933	337928	Cat Flu / Uri	Cat	Danny		Cat Impound	26	26-May-2017				Adopted	26-Jul-2017	
1007933	340236	Cat Flu / Uri / Recheck	Cat	Danny	Kelly Lamden	Cat Iso	08	08-Jun-2017				Adopted	26-Jul-2017	
1007935	337257	Cat Flu / Uri	Cat	Toby		Cat Adoption 4	26	26-May-2017				Available For Adoption	01-Aug-2017	
1007938	337046	Cat Flu / Uri	Cat	Neil		Cat Iso	25	25-May-2017				Adopted	08-Jun-2017	
1007938	341061	Cat Flu / Uri / Recheck	Cat	Neil	Kelly Lamden	Cat Iso	06	12-Jun-2017				Adopted	10-Jul-2017	
1008049	337103	Cat Flu / Uri	Cat	Maggie		Cat Adoption 2	26	26-May-2017				Adopted	25-Jun-2017	
1008049	339963	Cat Flu / Uri / Recheck	Cat	Maggie	Kelly Lamden	Cat Iso	07	07-Jun-2017				Adopted	25-Jun-2017	
1008049	340220	Cat Flu / Uri / Hospital	Cat	Maggie	Kelly Lamden	Cat Iso	07	08-Jun-2017				Adopted	25-Jun-2017	
1008049	341069	Cat Flu / Uri / Recheck	Cat	Maggie	Kelly Lamden	Cat Iso	07	07-Jun-2017				Adopted	25-Jun-2017	
1008050	338379	Cat Flu / Uri	Cat	Poppy		Cat Adoption 2	01	01-Jun-2017				Adopted	08-Jul-2017	
1008050	338557	Cat Flu / Uri	Cat	Poppy	Adele Hewitt	Cat Adoption 2	01	01-Jun-2017				Adopted	08-Jul-2017	
1008050	340234	Cat Flu / Uri / Recheck	Cat	Poppy	Kelly Lamden	Cat Iso	08	08-Jun-2017				Adopted	08-Jul-2017	
1008053	340229	Cat Flu / Uri / Recheck	Cat	Rosey	Kelly Lamden	Cat Iso	17	08-Jun-2017				Adopted	29-Jul-2017	
1008218	337291	Cat Flu / Uri	Cat	Morgan		Cat Adoption 2	27	27-May-2017				Euthanised	01-Jul-2017	
1008243	337262	Cat Flu / Uri	Cat	Darcy		Cat Adoption 2	26	26-May-2017				Adopted	17-Jun-2017	
1008243	340225	Cat Flu / Uri / Recheck	Cat	Darcy	Kelly Lamden	Cat Iso	18	08-Jun-2017				Adopted	17-Jun-2017	
1008304	340230	Cat Flu / Uri / Recheck	Cat	Hannah	Kelly Lamden	Cat Iso	18	08-Jun-2017				Available For Adoption - In Foster	17-Jul-2017	
1008304	341072	Cat Flu / Uri / Recheck	Cat	Hannah	Kelly Lamden	Cat Iso	18	12-Jun-2017				Available For Adoption - In Foster	17-Jul-2017	
1008305	338376	Cat Flu / Uri	Cat	Cordelia		Cat Adoption 2	01	01-Jun-2017				Adopted	13-Jun-2017	
1008305	340226	Cat Flu / Uri / Recheck	Cat	Cordelia	Kelly Lamden	Cat Iso	11	08-Jun-2017				Adopted	13-Jun-2017	
1008723	337905	Cat Flu / Uri	Cat	Shawnie		Cat Iso	04	29-May-2017				Adopted	21-Jul-2017	
1008723	340774	Cat Flu / Uri	Cat	Shawnie		Cat Iso	04	11-Jun-2017				Adopted	21-Jul-2017	
1008723	341073	Cat Flu / Uri / Cat Flu / Uri	Cat	Shawnie	Kelly Lamden	Cat Iso	04	12-Jun-2017				Adopted	21-Jul-2017	
1008745	338374	Cat Flu / Uri	Cat	Sebina		Cat Adoption 3	11	01-May-2017				Euthanised	04-Jun-2017	
1008745	339964	Cat Flu / Uri / Recheck	Cat	Sebina	Kelly Lamden	Cat Iso	11	07-Jun-2017				Euthanised	08-Jun-2017	
1008747	337904	Cat Flu / Uri	Cat	Marcus		Cat Iso	02	29-May-2017				Adopted	21-Jun-2017	
1009347	340216	Cat Flu / Uri / Hospital	Cat	Brookie	Kelly Lamden	Cat Iso	02	08-Jun-2017				Adopted	15-Jul-2017	
1009348	340232	Cat Flu / Uri / Recheck	Cat	Harry	Kelly Lamden	Cat Iso	23	08-Jun-2017				Adopted	04-Jul-2017	
1009449	341074	Cat Flu / Uri / Recheck	Cat	Harry	Kelly Lamden	Cat Iso	23	08-Jun-2017				Adopted	04-Jul-2017	
1009449	339635	Cat Flu / Uri	Cat	Barbie		Cat Impound	27	06-Jun-2017				Adopted	06-Jul-2017	
1009519	339670	Cat Flu / Uri	Cat	Poncho		Cat Adoption 4	06	06-Jun-2017				Adopted	09-Jul-2017	
1009519	339962	Cat Flu / Uri / Recheck	Cat	Poncho	Kelly Lamden	Cat Iso	07	07-Jun-2017				Adopted	09-Jul-2017	Anorexia
1009519	340218	Cat Flu / Uri / Recheck	Cat	Poncho	Kelly Lamden	Cat Iso	09	09-Jun-2017				Adopted	09-Jul-2017	Anorexia
1009519	341075	Cat Flu / Uri / Recheck	Cat	Poncho	Kelly Lamden	Cat Iso	17	17-Jun-2017				Adopted	09-Jul-2017	
1009531	338873	Cat Flu / Uri	Cat	Charlie		Cat Iso	09	03-Jun-2017				In Foster	02-Aug-2017	
1009531	340223	Cat Flu / Uri / Recheck	Cat	Charlie	Kelly Lamden	Cat Iso	12	08-Jun-2017				In Foster	02-Aug-2017	
1009531	341077	Cat Flu / Uri / Recheck	Cat	Charlie	Kelly Lamden	Cat Iso	12	12-Jun-2017				In Foster	02-Aug-2017	
1009764	339667	Cat Flu / Uri	Cat	Philip		Cat Adoption 2	06	06-Jun-2017				Euthanised	09-Jun-2017	
1009764	339662	Cat Flu / Uri	Cat	Missy		Cat Adoption 2	06	06-Jun-2017				Euthanised	09-Jun-2017	
1009767	341059	Cat Flu / Uri / Recheck	Cat	Missy	Kelly Lamden	Cat Iso	25	12-Jun-2017				Adopted	05-Jul-2017	
1009768	339661	Cat Flu / Uri	Cat	Oscar		Cat Adoption 2	06	06-Jun-2017				Adopted	30-Jun-2017	
1009861	339664	Cat Flu / Uri	Cat	Tink		Cat Adoption 2	06	06-Jun-2017				Adopted	25-Jun-2017	
1009861	340221	Cat Flu / Uri / Recheck	Cat	Tink	Kelly Lamden	Cat Iso	08	08-Jun-2017				Adopted	25-Jun-2017	
1009861	341078	Cat Flu / Uri / Recheck	Cat	Tink	Kelly Lamden	Cat Iso	12	12-Jun-2017				Adopted	25-Jun-2017	
1010238	339634	Cat Flu / Uri	Cat	Perly		Cat Impound	07	06-Jun-2017				Adopted	15-Jul-2017	
1010455	340444	Cat Flu / Uri	Cat	Tigger		Cat Iso	09	09-Jun-2017				Euthanised	26-Jun-2017	
1010456	340607	Cat Flu / Uri	Cat	Simon		Cat Iso	10	10-Jun-2017				Euthanised	14-Jun-2017	
1010457	340445	Cat Flu / Uri	Cat	Amanda		Cat Iso	11	09-Jun-2017				Euthanised	14-Jun-2017	
1010457	341081	Cat Flu / Uri / Recheck	Cat	Amanda	Kelly Lamden	Cat Iso	11	12-Jun-2017				Euthanised	14-Jun-2017	Anorexia
1010667	340768	Cat Flu / Uri	Cat	Olivia		Cat Iso	29	11-Jun-2017				Adopted	24-Jul-2017	
1010676	340921	Cat Flu / Uri	Cat	Betty		Cat Adoption 4	12	12-Jun-2017				Adopted	26-Jul-2017	
1010798	340924	Cat Flu / Uri	Cat	Aunelle		Cat Adoption 4	12	12-Jun-2017				Adopted	07-Jul-2017	
1010823	339718	Cat Flu / Uri	Cat	Harvey		Cat Impound	23	06-Jun-2017				Euthanised	06-Jun-2017	
1011055	344679	Cat Flu / Uri	Cat	Eden		Cat Iso	15	15-Jun-2017				Adopted	03-Jul-2017	
1011058	340906	Cat Flu / Uri	Cat	Francine		Cat Adoption 4	12	12-Jun-2017				Euthanised	20-Jun-2017	
1011058	344737	Cat Flu / Uri / Anorexia	Cat	Francine	Kelly Lamden	Cat Iso	15	15-Jun-2017				Euthanised	20-Jun-2017	
1011120	339627	Cat Flu / Uri	Cat	Mocha		Cat Impound	06	06-Jun-2017				Euthanised	13-Jun-2017	
1011122	339625	Cat Flu / Uri	Cat	Mocha		Cat Impound	06	06-Jun-2017				Euthanised	15-Jul-2017	
1011124	339628	Cat Flu / Uri	Cat	Panther		Cat Impound	06	06-Jun-2017				Euthanised	14-Jun-2017	
1011125	339629	Cat Flu / Uri	Cat	Panther		Cat Impound	06	06-Jun-2017				Adopted	23-Jul-2017	
1011194	340562	Cat Flu / Uri	Cat	Benji		Cat Impound	15	10-Jun-2017				Euthanised	21-Jun-2017	
1011196	339631	Cat Flu / Uri	Cat	Jeffrey		Cat Impound	05	05-Jun-2017				Adopted	05-Jul-2017	
1011199	340912	Cat Flu / Uri	Cat	Olivia		Cat Adoption 3	12	12-Jun-2017				Adopted	10-Jul-2017	
1011255	346548	Cat Flu / Uri / G.I. problems	Cat	Jenkins		Cat Impound	25	23-Jun-2017				Available For Adoption	03-Aug-2017	
1011363	340795	Cat Flu / Uri	Cat	Mandy		Cat Iso	11	11-Jun-2017				Euthanised	20-Jun-2017	
1011363	341060	Cat Flu / Uri / Recheck	Cat	Mandy	Kelly Lamden	Cat Iso	12	12-Jun-2017				Euthanised	20-Jun-2017	
1011368	340569	Cat Flu / Uri	Cat	Rufus		Cat Impound	17	17-Jun-2017				Adopted	17-Jul-2017	
1011747	346679	Cat Flu / Uri	Cat	Andy		Cat Impound	22	23-Jun-2017				Available For Adoption	26-Jul-2017	
10														

Animal ID	Consult ID	Reason For Consult	Type	Name	Vet	Location	Kennel	Consult Date	Hold Date	Next Status	Next Status Date	Current Status	Status Date	Diagnosis	Differential Diagnosis
977266	302473	Kennel cough	Dog	Bozo		Dog Impound	5	02-Jan-2017				Adopted	27-Jan-2017		
977531	303572	Kennel cough	Dog	Sarah		Rspca Dog Adoptions	12	05-Jan-2017				Transfer Out	06-Apr-2017		
979286	305715	Kennel cough	Dog	Sheldon		And Rspca Dog Adoptions	37	15-Jan-2017				Adopted	29-Jan-2017		
979286	306405	Kennel cough	Dog	Sheldon		And Rspca Dog Adoptions	37	18-Jan-2017				Adopted	29-Jan-2017		
979582	303773	Kennel cough	Dog	Libby		And Rspca Dog Adoptions	22	07-Jan-2017				Adopted	28-Jan-2017		
979582	303773	Kennel cough	Dog	Libby		And Rspca Dog Adoptions	22	07-Jan-2017				Adopted	28-Jan-2017		
979582	305713	Kennel cough	Dog	Libby		And Rspca Dog Adoptions	22	15-Jan-2017				Adopted	28-Jan-2017		
984410	308533	Kennel cough	Dog	Prada		And Rspca Dog Adoptions	6	26-Jan-2017				Adopted	09-Apr-2017		
984410	311551	Kennel cough	Dog	Prada		And Rspca Dog Adoptions	37	06-Feb-2017				Adopted	09-Apr-2017		
985818	313690	Kennel cough	Dog	Topaz		And Rspca Dog Adoptions		15-Feb-2017				Adopted	08-Apr-2017		
987963	313638	Kennel cough	Dog	Damon		And Rspca Dog Adoptions	15	15-Feb-2017				Transfer Out	11-Mar-2017		
987963	313638	Kennel cough	Dog	Damon		And Rspca Dog Adoptions	15	15-Feb-2017				Transfer Out	11-Mar-2017		
988505	315035	Kennel cough	Dog	Zoe		And Rspca Dog Adoptions	33	20-Feb-2017				Adopted	12-Mar-2017		
990215	316777	Kennel cough	Dog	Brock		And Rspca Dog Adoptions	22	27-Feb-2017				Adopted	10-Mar-2017		
990427	316783	Kennel cough	Dog	Jet		And Rspca Dog Adoptions	23	27-Feb-2017				Adopted	02-Apr-2017		
990560	316779	Kennel cough	Dog	Morrison		And Rspca Dog Adoptions	15	27-Feb-2017				Adopted	02-Apr-2017		
990560	316779	Kennel cough	Dog	Morrison		And Rspca Dog Adoptions	15	27-Feb-2017				Adopted	02-Apr-2017		
990610	315157	Kennel cough / Parasites-	Dog	Thunder		And Rspca Dog Adoptions	20	21-Feb-2017				Adopted	18-Mar-2017		
990775	317589	Kennel cough	Dog	Jilly		Dog Impound	5	02-Mar-2017				Transfer Out	11-Mar-2017		
991379	317893	Kennel cough	Dog	Noodle		Rspca Dog Adoptions	8	03-Mar-2017				Adopted	02-Apr-2017		
993052	320297	Kennel cough	Dog	Tiny		And Rspca Dog Adoptions	16	13-Mar-2017				Available For Adoption	22-Mar-2017		
993778	320311	Kennel cough	Dog	Rolly		And Dog Impound	13	13-Mar-2017				Euthanised	28-Jun-2017		
993985	321547	Kennel cough	Dog	Callie		Rspca Dog Adoptions		18-Mar-2017				Adopted	25-May-2017		
994829	323036	Kennel cough	Dog	Princess Leia		And Rspca Dog Adoptions	33	23-Mar-2017				Adopted	15-Apr-2017		
995173	324466	Kennel cough	Dog	Shelby		And Rspca Dog Adoptions	23	29-Mar-2017				In Foster	12-Jun-2017		
995499	323039	Kennel cough	Dog	Jetson		And Rspca Dog Adoptions	35	23-Mar-2017				Adopted	08-Apr-2017		
995690	324464	Kennel cough	Dog	Tyler		And Rspca Dog Adoptions	6	29-Mar-2017				Transfer Out	12-May-2017		
995693	323104	Kennel cough	Dog	Iggy		And Dog Impound	21	24-Mar-2017				Euthanised	18-Apr-2017		
995694	323106	Kennel cough	Dog	Ziggy		Dog Impound	29	24-Mar-2017				Euthanised	11-Apr-2017		
995998	324467	Kennel cough	Dog	Dudley		Rspca Dog Adoptions		30-Mar-2017				Adopted	22-Apr-2017		
998357	325967	Kennel cough	Dog	Bronx		And Rspca Dog Adoptions	18	05-Apr-2017				Adopted	04-May-2017		
998811	327114	Kennel cough	Dog	Jono		And Dog Impound	21	10-Apr-2017				Adopted	28-May-2017		
1000964	329206	Kennel cough	Dog	Nacho		Rspca Dog Adoptions	3	20-Apr-2017				Adopted	28-Apr-2017		
1001492	330752	Kennel cough	Dog	Whatever		And Dog Holding	28	27-Apr-2017				Euthanised	02-May-2017		
1001494	330751	Kennel cough	Dog	Tequila		Dog Holding		27-Apr-2017				Euthanised	02-May-2017		
1002140	330753	Kennel cough	Dog	Luna		Rspca Dog Adoptions	9	27-Apr-2017				Euthanised	02-May-2017		
1010236	344877	Kennel cough	Dog	Chase		And Rspca Dog Adoptions	19	16-Jun-2017				Adopted	08-Jul-2017		
1011354	346443	Kennel cough	Dog	Pepper		And Dog Quarantine	02	22-Jun-2017				Adopted	15-Jul-2017		
1011746	348834	Kennel cough	Dog	Jafar		Dog Holding	31	28-Jun-2017				Adopted	22-Jul-2017		
1011880	346765	Kennel cough	Dog	Gizelle		Rspca Dog Adoptions	2	24-Jun-2017				Euthanised	19-Jul-2017		
1015058	348833	Kennel cough	Dog	Herculies		And Dog Holding	31	28-Jun-2017				Reclaimed	08-Jul-2017		