

# EnviroEd

For students | For teachers | For schools | For families

2024



City of  
Ipswich

# WHAT IS ENVIROED?

Ipswich has a unique landscape with one of the most diverse ranges of natural vegetation types in South-East Queensland. There are more than 2,000 recorded species of native plants and animals in Ipswich. Many are rare or threatened.

Ipswich City Council aims to promote, protect and enhance the local environment inclusive of the cultural landscape features. To achieve success, council seeks to work closely with the community to build awareness and engagement.

Our program of activities for schools is designed to educate and empower our next generation of environmental stewards. It includes events, training, resources and excursions specifically designed to support schools in the delivery of hands-on environmental education.



## Get in touch

Council's Environment Education officer can provide advice and guidance on school environmental education.

Resources are also available to support schools.

If you have a question or a suggestion:

**Email:** [enviroed@ipswich.qld.gov.au](mailto:enviroed@ipswich.qld.gov.au)

**Phone:** (07) 3810 6666

**Web:** [ipswich.qld.gov.au/enviroed](http://ipswich.qld.gov.au/enviroed)



# FOR TEACHERS

## PROFESSIONAL DEVELOPMENT

Connect with like-minded peers from Ipswich schools and upskill on environment topics for your classroom!

Sessions will occur roughly once a term during the school calendar.

They will be held at the Queens Park Environmental Education Centre, or at outside/onsite locations if the topic warrants.

Potential topics for the 2024 program include:

- Creating an environmental action plan
- Habitats at school including worms, native bees, frog hotels and planting
- Creating your own bush tucker garden
- Ways to decrease waste at school
- How to monitor your local waterways
- Teaching about erosion and waterways.

To keep an eye out for these events please 'Follow' [ipswichcitycouncil.eventbrite.com](https://www.ipswichcitycouncil.eventbrite.com)



# FOR TEACHERS

## WATERBUG KITS

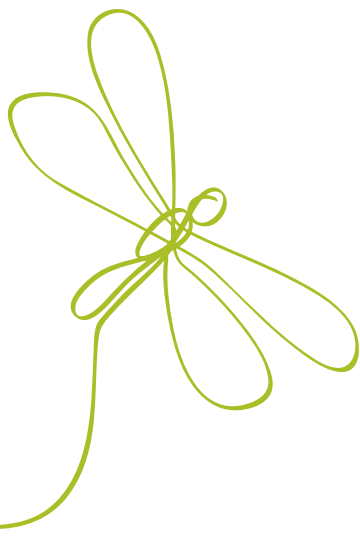
This is a new addition to council's EnviroEd program in 2024!

Your local creek or waterway can become an instant classroom with waterbug kits able to be borrowed from council's EnviroEd officer.

The kit includes nets, trays and a large reference poster so your students can discover the tiny life living in Ipswich waterways, and how that indicates waterway health.

Council's EnviroEd officer may also be able to suggest some local waterway locations suitable for your activity.

Keep an eye out for a Teacher Professional Development on using these kits – coming in 2024!



### How to borrow a waterbug kit:

Email the EnviroEd officer at [enviroed@ipswich.qld.gov.au](mailto:enviroed@ipswich.qld.gov.au) to register your interest in borrowing a waterbug kit for your class.

**Cost:** Free



# FOR STUDENTS

## YOUTH SUSTAINABILITY SUMMIT

2024 will see a new location, but the same great inspiration and knowledge-sharing!

This annual event aims to spark sustainability projects at home and school for Ipswich primary school students.

The event will focus on celebrating our achievements, interrogating our challenges and finding leadership opportunities as change makers in the environmental space.



**Where:** Ipswich City Council building, 1 Nicholas Street, Ipswich

**When:** October 2024

**Target grades:** 4-6

**Cost:** Free to attend

**How to register:**

The event will be listed on [ipswichcitycouncil.eventbrite.com](https://www.ipswichcitycouncil.eventbrite.com)

# FOR STUDENTS

## QUEENS PARK

This popular destination offers a variety of environment-related features and activities.

Schools and other large groups are requested to book their visit at least one month in advance.

A recommended program for exploring the park will be provided, depending on your group size. Please note that groups of 90 students are recommended to split their visit over two days.



## IPSWICH NATURE CENTRE

With more than 42 species – including dingoes, wallabies, bilbies and more – the Ipswich Nature Centre is a wonderful opportunity to get up close with native wildlife through a guided experience.

**Open:** 9.30 am – 4.00 pm, Tuesday to Friday

**Cost:** Free (gold coin donation appreciated)

## ENVIRONMENTAL EDUCATION CENTRE

At the centre, school groups will experience a short presentation by a council officer, followed by time to explore the play-based learning experiences.

If classes are interested in specific focus areas, tailored programs can be arranged.

**Open:** School group visits are available 9.00 am – 2.00 pm, Tuesday to Thursday

**Cost:** Free

### Booking an excursion at Queens Park

Find the EnviroEd booking enquiry form at [ipswich.qld.gov.au/enviroed](http://ipswich.qld.gov.au/enviroed)

For more information email [enviroed@ipswich.qld.gov.au](mailto:enviroed@ipswich.qld.gov.au)

# FOR STUDENTS

## NATURE EXCURSION

It's easy to be inspired when you are learning in an outdoor classroom.

Council's Enviroplan-funded conservation areas provide various options for school groups.

### Organise a guided school excursion

Council offers bookable tours for schools and early learning centres, with a number of age-appropriate locations available.

Contact council's Conservation Visitor Management Officer on (07) 3810 6666 or email [environment@ipswich.qld.gov.au](mailto:environment@ipswich.qld.gov.au)

### Enviroplan conservation areas

These areas are recommended for school groups. Note that access is limited for large buses.

#### DENMARK HILL CONSERVATION RESERVE

This area features short bushwalks and a nature-themed playground. It is a great option for younger children or those new to outdoor bushwalks.

#### FLINDERS-GOOLMAN CONSERVATION ESTATE

The Hardings Paddock day use area is suitable for school group activities including bushwalking, camping and a bush tucker trail.

The Hardings Paddock Community Hut can be booked and is suitable for groups up to 30 people. This self-contained facility has solar power, kitchen, disability access toilet, tables and chairs. Contact council on (07) 3810 6666 for booking details.

#### WHITE ROCK - SPRING MOUNTAIN CONSERVATION ESTATE

This estate has a variety of bushwalking trails suitable for different ages and abilities.



# FOR SCHOOLS

## CREATING HABITAT

Schools can lead by example and create habitat for wildlife on their grounds.

There are ways council can help with environmental goals.

### Free plants

Ipswich schools and centres are eligible for 100 free plants each year through the Free Plant Program.

An application form is available at [ipswich.qld.gov.au/freeplants](http://ipswich.qld.gov.au/freeplants)

If you are interested in bush tucker plants contact [enviroed@ipswich.qld.gov.au](mailto:enviroed@ipswich.qld.gov.au) for a recommended plant list.

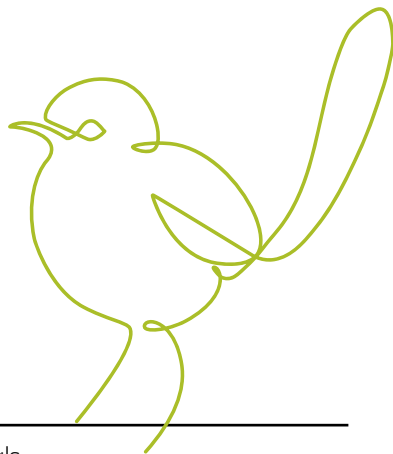
### Landholder conservation partnerships

Schools with a big interest in environment conservation may be interested in joining the Landholder Conservation Partnerships Program.

The Enviroplan-funded program assists with managing, enhancing and protecting ecosystems.

The free program offers a range of support and assistance to members.

For information on program options and eligibility criteria, go to [ipswich.qld.gov.au/lcpp](http://ipswich.qld.gov.au/lcpp)





# FOR SCHOOLS

## FUNDING OPPORTUNITIES

Schools and education centres can apply for funding to assist their environmental projects.

Under the Enviroplan Levy Community Funding schools/childcares may apply for up to \$3,000 each application for projects that:

- increase community understanding of the value of the natural environment and local environmental issues and impacts
- increase community action that benefits the natural environment
- improve the condition of bushland or the conservation of native flora and fauna on private or public land.

Examples of initiatives include:

- conservation projects, programs and events
- improvements to native habitat, waterways and parks
- fauna and flora protection and conservation
- tree planting
- community environmental education and awareness.

There are two rounds of funding each year, in March and September. For more information see [ipswich.qld.gov.au/funding](https://ipswich.qld.gov.au/funding)

If you would like some assistance in completing a grant application, council offers grant writing workshops.

Email [enviroed@ipswich.qld.gov.au](mailto:enviroed@ipswich.qld.gov.au) for more information.



# FOR SCHOOLS

## TANGALOOMA ECOMARINES

Council is proud to be supporting EcoMarines in the delivery of fun environmental education programs for schools and education centres.

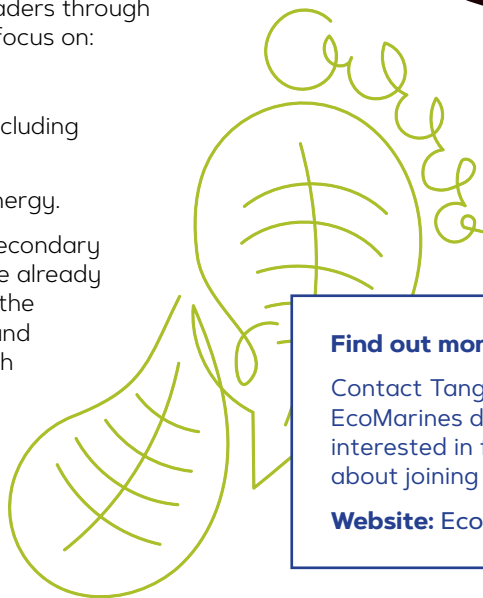
Tangalooma EcoMarines are providing more opportunities for Ipswich schools to join the program.

EcoMarines complements Ipswich City Council initiatives and environmental education.

The EcoMarines program inspires young learners and their school communities to be environmental leaders through positive action, with a focus on:

- reducing litter
- managing waste including our key resources
- food, water and energy.

Join the primary and secondary Ipswich schools that are already signed up and reaping the rewards of the on-ground support offered through the program.



### Find out more:

Contact Tangalooma EcoMarines directly if you are interested in finding out more about joining the program.

**Website:** [Ecomarines.org](http://Ecomarines.org)

# FOR FAMILIES

## ENVIRONMENT EVENTS

Stay up to date with events and activities for all ages.

Council initiatives support a healthy and vibrant natural environment that is highly valued by, and connected to, the community.

You will find a range of events and educational activities for all ages that highlight our conservation and sustainability efforts across the city.

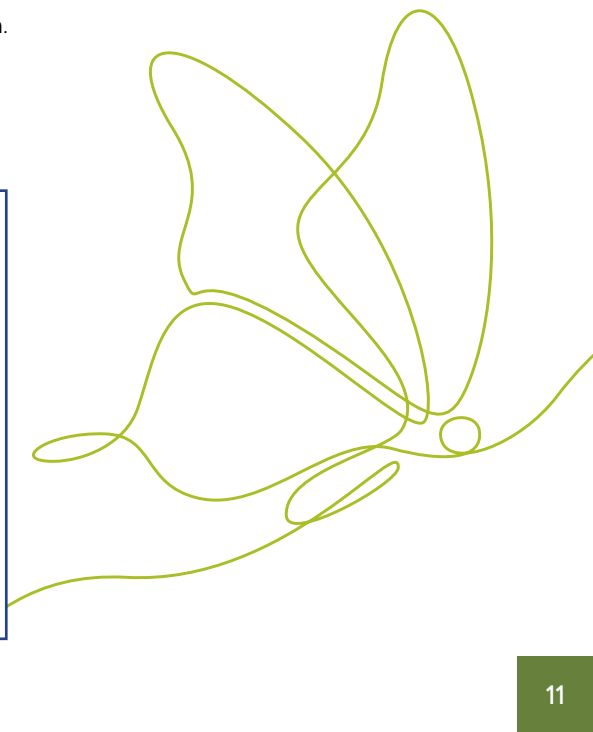
This includes community education, citizen science, volunteering and habitat planting days.

Events are added throughout the year. Go to [lpswichcitycouncil.eventbrite.com](https://lpswichcitycouncil.eventbrite.com). Click 'Follow' to receive notifications when events are added.

### School holidays

The school holiday program is filled with a range of fun activities that encourage kids to get involved in our local environment and learn about ways to become more sustainable.

Council's program in 2024 will have activities both at the Queens Park Environmental Education Centre and in outdoor locations.





Ipswich City Council  
PO Box 191, Ipswich QLD 4305, Australia

Phone (07) 3810 6666  
[council@ipswich.qld.gov.au](mailto:council@ipswich.qld.gov.au)  
[ipswich.qld.gov.au](http://ipswich.qld.gov.au)

---

Join us online:



[/IpswichCityCouncil](https://www.facebook.com/IpswichCityCouncil)



[/ipswich-city-council](https://www.linkedin.com/company/ipswich-city-council)



[/IpswichCityCouncilTV](https://www.youtube.com/IpswichCityCouncilTV)