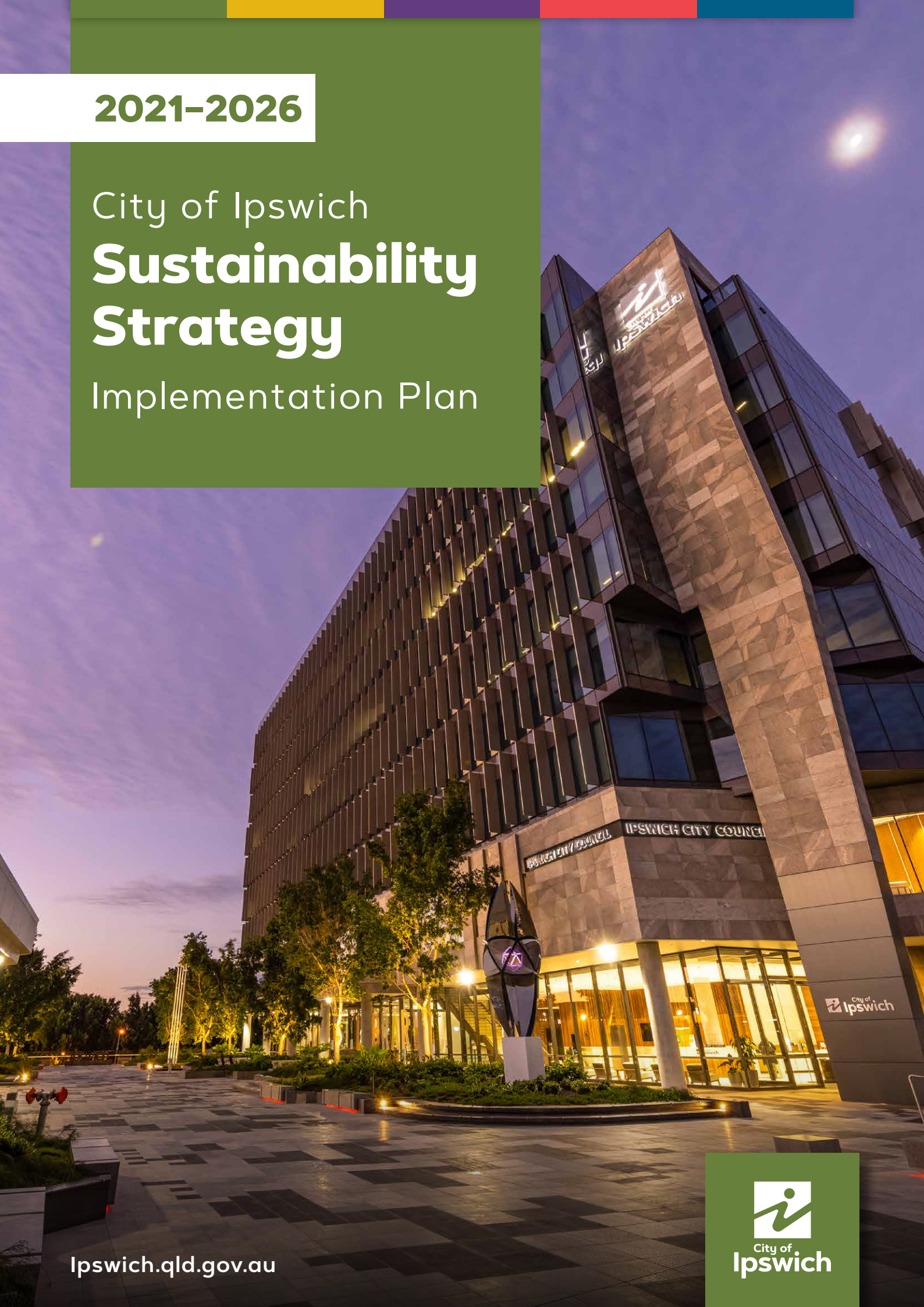


2021–2026

City of Ipswich
**Sustainability
Strategy**

Implementation Plan



ACKNOWLEDGEMENT OF COUNTRY

Ipswich City Council respectfully acknowledges the Traditional Owners as custodians of the land. The Traditional Owners whose earth, winds and water we share, and have had a deep spiritual and cultural connection to country for thousands of years. We pay our respects to their elders, past, present and emerging, as the keepers of the traditions, cultures and stories of a proud people.

Cover image: 1 Nicholas Street

Constructed with a 5 green star rating, this building incorporates sustainable design elements and materials which include smart glass, a reflective colour scheme, a rooftop solar system and modern construction techniques.

CONTENTS

OVERVIEW	5
PRIORITY ACTION AREA 1: SUSTAINABLE COUNCIL	6
FOCUS AREA 1: ENERGY AND CARBON REDUCTION	6
FOCUS AREA 2: WATER EFFICIENCY	7
FOCUS AREA 3: SUSTAINABLE PROCUREMENT	8
FOCUS AREA 4: RESOURCE RECOVERY AND WASTE MINIMISATION	9
FOCUS AREA 5: GREEN WORKPLACE TRAVEL	10
PRIORITY ACTION AREA 2: CLIMATE ADAPTATION	11
FOCUS AREA 1: CITY EMISSIONS	11
FOCUS AREA 2: URBAN HEAT AND URBAN GREENING	12
FOCUS AREA 3: DISASTER MANAGEMENT	13
FOCUS AREA 4: CLIMATE RISK MANAGEMENT	14
PROGRESSED ACTION AREA 3: TRANSPORT AND MOBILITY	15
FOCUS AREA 1: SUSTAINABLE TRANSPORT	15
FOCUS AREA 2: ACTIVE TRANSPORT	15
PROGRESSED ACTION AREA 4: NATURAL ENVIRONMENT AND HEALTHY WATERWAYS	16
FOCUS AREA 1: NATURAL ENVIRONMENT AND CULTURAL LANDSCAPES	16
FOCUS AREA 2: WATERWAYS AND WETLANDS	16
PROGRESSED ACTION AREA 5: WASTE AND RESOURCE RECOVERY	17
FOCUS AREA 1: IPSWICH WASTE SERVICES OPERATIONS	17
FOCUS AREA 2: CIRCULAR ECONOMY INDUSTRY COLLABORATION	17
FOCUS AREA 3: CIRCULAR ECONOMY FOR THE COMMUNITY	17



OVERVIEW

In alignment with Ipswich City Council's Sustainability Strategy, the Sustainability Strategy Implementation Plan (SSIP) outlines the City's Sustainability strategic priorities and details specifically how they will be actioned and delivered over the next 5-year period to 2026.

This implementation plan sets out a roadmap detailing how Ipswich City Council will deliver on the City's vision and goals for sustainability.

See here for Ipswich's full strategy document – [Sustainability Strategy 2021-2026](#).

DELIVERY

The following tables identify the implementation process and timeframe for delivery for each of the actions identified in the Sustainability Strategy 2021-2026. The implementation of the Sustainability Strategy will be subject to future annual budget and service planning priorities. The implementation plan identifies the delivery mechanisms and timeframes, as well as the measures of success in the implementation of the actions.

Delivery mechanisms:

- Business as usual (BAU) – influencing existing programs, projects and works to incorporate the delivery of the Sustainability Strategy 2021-2026 actions.
- New process – create a new process/procedure to deliver action.
- Capex project – capital expenditure project.
- Internal collaboration – engage internal stakeholders to develop and embed new sustainability processes and procedures.
- External collaboration – engage external stakeholders to provide input and enable delivery of action.
- Consultancy – engage consultants to undertake work.
- Procurement – action is delivered via a service contract.
- Supporting strategy/ plan – the action has an associated strategy or plan that provides more data/ detail to deliver the action.
- Education and engagement – develop education and learning materials to encourage behaviour change.



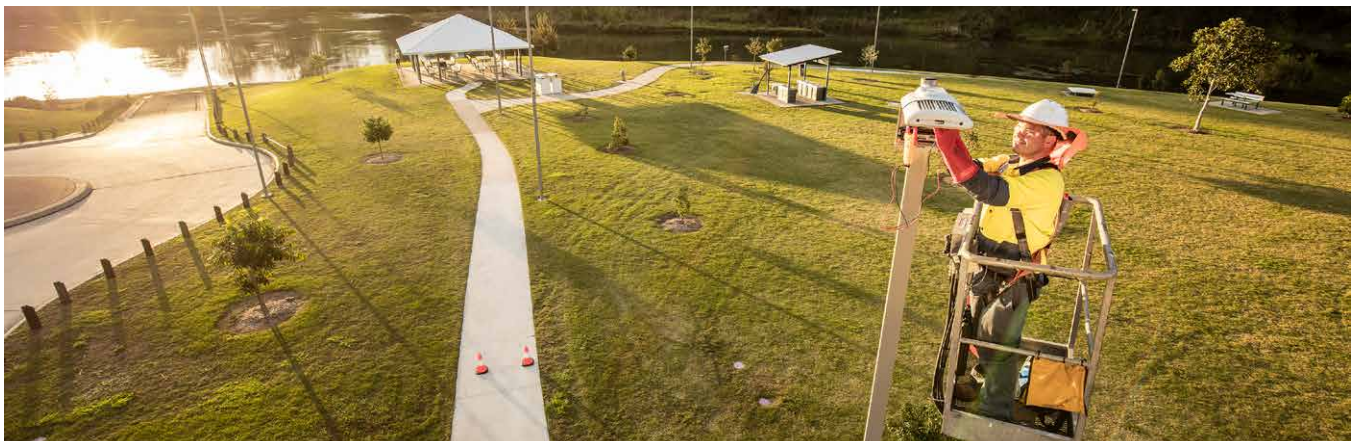


PRIORITY ACTION AREA 1: SUSTAINABLE COUNCIL

FOCUS AREA 1: ENERGY AND CARBON REDUCTION

Goal: Ipswich City Council will reduce organisational carbon emissions by 50% by 2026.

ACTION NUMBER	ACTION	DELIVERY MECHANISM/S	DELIVERY TIMEFRAME	MEASURE OF SUCCESS
1.1.1	Report annually on council's emissions reduction activities	New process BAU	FY22 and ongoing	Report annually to Councillors and the organisation.
1.1.2	Reduce energy consumption through efficiency measures including but not limited to; LED street lighting retrofits and council asset upgrades	Capex projects	FY23 and ongoing	Energy efficiency projects implemented and reduction of emissions measurable.
1.1.3	Targeted implementation of Rooftop Solar PV systems and battery storage (where fit for purpose)	Capex Projects	FY23	Solar and battery storage projects implemented to reduce emissions.
1.1.4	Reduce emissions associated with council's fleet by transitioning to low emissions vehicles and equipment e.g. hybrid and electric vehicles	Supporting strategy/ plan Internal collaboration	FY23 and ongoing	Replacement of vehicles and equipment to EVs (or low emissions vehicles) with measured reduction in emissions.
1.1.5	Power council's electricity requirements with renewable energy via a Power Purchase Agreement	Procurement	FY24	Power Purchase Agreement in place and operable
1.1.6	Enhance measurement and monitoring of organisational energy and carbon emissions including Scope 3 emissions.	Consultancy Internal collaboration	FY22 and ongoing	Improved monitoring across all emission sources.



FOCUS AREA 2: WATER EFFICIENCY

Goal: Ipswich City Council is innovative, progressive and efficient in the way we use water in our operations

ACTION NUMBER	ACTION	DELIVERY MECHANISM/S	DELIVERY TIMEFRAME	MEASURE OF SUCCESS
1.2.1	For existing assets, investigate and identify opportunities for water efficiency measures to be implemented through maintenance upgrades and/ or for specific targeted water reduction/ alternative water projects.	Internal collaboration	FY23	Prioritised schedule of water efficiency/ reduction measures for existing assets across building and facilities, and parks and open space asset groups for project implementation.
1.2.2	For new projects, develop design specifications for improved water efficiency and water quality outcomes for Council-delivered projects.	Internal collaboration	FY24	Updated design specifications for water efficiency and water quality for Council-delivered projects.
1.2.3	Monitor water use and demand cycles using Council's sustainability data platform and smart metering and apply adaptive management principles through reporting.	BAU	FY23	Accurate and current water consumption data available on reporting platform and water consumption report set up to identify high water users in the organisation.
1.2.4	Work and partner with Urban Utilities to build climate resilience in Council's water usage wherever feasible e.g. purified recycled water and networks.	External collaboration - Urban Utilities	FY26	Opportunities to utilise purified recycled water and associated network infrastructure requirements are identified to future-proof the water network in Ipswich for climate resilience.
1.2.5	Work with user groups and sporting clubs to build water-wise awareness and incentivise water efficient behaviour.	External collaboration Education	FY24	User groups and sporting clubs have undertaken water-wise education and are practicing water efficiency - no increase in water consumption (based on typical-use).



FOCUS AREA 3: SUSTAINABLE PROCUREMENT

Goal: To promote and embed sustainable procurement practices in all of Councils procurement activities.

ACTION NUMBER	ACTION	DELIVERY MECHANISM/S	DELIVERY TIMEFRAME	MEASURE OF SUCCESS
1.3.1	Identify immediate opportunities to procure more sustainable goods and services.	Internal collaboration	FY23	Sustainable procurement opportunities identified
1.3.2	Develop a sustainable procurement policy and implementation framework.	Internal collaboration	FY24	Sustainable procurement policy adopted
1.3.3	Embed sustainable procurement procedures and requirements into purchasing category specifications and proposal evaluation criteria via the update of procurement templates.	Internal collaboration New process	FY25	Procurement templates updated with sustainable procurement requirements
1.3.4	Educate staff in sustainable procurement practices.	Education and engagement	FY24	Online training module developed to deploy to Council staff
1.3.5	Engage with suppliers to communicate and build capacity around sustainable procurement to assist them in becoming preferred supplies with council.	External collaboration	FY24	Increase in the number of suppliers providing and demonstrating sustainability credentials
1.3.6	Establish a method to measure and monitor the 'triple bottom line' benefits of implementing sustainable procurement practices.	Internal collaboration	FY24	Triple bottom line reporting methodology established and being utilised



FOCUS AREA 4: RESOURCE RECOVERY AND WASTE MINIMISATION

Goal: To reduce the generation of waste in Council’s operations and to maximise opportunities for resource recovery.

ACTION NUMBER	ACTION	DELIVERY MECHANISM/S	DELIVERY TIMEFRAME	MEASURE OF SUCCESS
1.4.1	Source separate waste streams wherever possible and feasible for recycling and recovery in Council’s operations.	Internal collaboration	FY23	Waste streams identified that can be recovered and recycled and systems in place to do so
1.4.2	Seek products that have minimal or no packaging.	Procurement	FY23	Packaging requirements are included in procurement specifications
1.4.3	Reuse and recycle materials such as asphalt and concrete in Council’s construction activities.	Internal collaboration	FY24	Processes and procedures in place to enable the recycling of asphalt and concrete in Council’s construction activities
1.4.4	Implement a Council wide internal food recovery program.	Internal collaboration New process	FY23	Food waste is being diverted from general waste bins into the green FOGO bins
1.4.5	Develop waste management plans for all Council construction activities and contractor delivered projects.	Internal collaboration External collaboration New process	FY23	Waste Management Plans developed and being utilised for council-delivered projects



FOCUS AREA 5: GREEN WORKPLACE TRAVEL

Goal: Increase Council staff participation in choosing sustainable and active transport modes

ACTION NUMBER	ACTION	DELIVERY MECHANISM/S	DELIVERY TIMEFRAME	MEASURE OF SUCCESS
1.5.1	Engage with major employment generators in Ipswich to develop and implement Sustainable (Green) Workplace Travel Plans	External collaboration	FY26	Adoption of New Ipswich Planning Scheme which includes travel demand management plan preparation incentives
1.5.2	Implement the Green Workplace Travel Plan for 1 Nicholas Street	Internal collaboration Education and engagement	FY26	Annual workplace travel survey indicates continual shift toward sustainable travel alternatives (including working from home)





PRIORITY ACTION AREA 2: CLIMATE ADAPTATION

FOCUS AREA 1: CITY EMISSIONS

Goal: Ipswich is recognised as a low carbon city.

ACTION NUMBER	ACTION	DELIVERY MECHANISM/S	DELIVERY TIMEFRAME	MEASURE OF SUCCESS
2.1.1	Investigate, understand and calculate the City of Ipswich's emissions to establish a baseline inventory.	Consultancy	FY23	Baseline community carbon inventory created.
2.1.2	Support business and industry to reduce energy and emissions via education programs.	External collaboration Internal collaboration	FY23 and ongoing	Hold an ecoBiz workshop (or similar) with Ipswich business owners at least once per year
2.1.3	Educate the community regarding the implications of climate change and ways to adapt to a changing climate.	External collaboration Education and engagement	FY24	Establishment of a climate change community education program with SEQ alliance of councils
2.1.4	Attract new business and industries to Ipswich with a focus on low emissions technology.	External collaboration	FY26	Number of new (or transformed) businesses in Ipswich that are low emission businesses or have adopted carbon reduction targets.





FOCUS AREA 2: URBAN HEAT AND URBAN GREENING

Goal: Improve liveability by cooling the city and protecting people and communities from heat stress.

ACTION NUMBER	ACTION	DELIVERY MECHANISM/S	DELIVERY TIMEFRAME	MEASURE OF SUCCESS
2.2.1	Undertake a baseline analysis to map Ipswich’s urban heat island.	External collaboration	FY23	Urban heat map of the LGA completed and university project recommendations delivered
2.2.2	Develop an Urban Greening Plan.	Internal collaboration	FY22	Urban Greening Plan delivered
2.2.3	Ensure the planning scheme includes provision for natural asset protection and green spaces.	Internal collaboration	FY24	Urban Greening Plan recommendations embedded in planning scheme
2.2.4	Analyse the economic impact of urban heat island effect via climate scenario analysis.	Internal collaboration	FY24	Economic impacts quantified/ qualified via climate scenario analysis





FOCUS AREA 3: DISASTER MANAGEMENT

Goal: To increase community awareness and resilience to climate-related disasters

ACTION NUMBER	ACTION	DELIVERY MECHANISM/S	DELIVERY TIMEFRAME	MEASURE OF SUCCESS
2.3.1	Partner with local community leaders and groups to increase community resilience (Community Champions).	External collaboration	FY22	Delivery of a Resilient Leadership and Mentoring capacity building program. Small business continuity workshops.
2.3.2	Continue to develop community engagement and awareness about identifying and responding to risks, including but not limited to floods, fires, severe storms and heatwaves.	Internal collaboration	FY23 and ongoing	Education and awareness resources developed in multiple formats that are accessible to all the diverse communities in Ipswich.
2.3.3	Continue building the capability of the City of Ipswich Local Disaster Management Group and Local Recovery and Resilience Group to ensure a coordinated and effective preparation for, response to and recovery from disaster events.	Internal collaboration	FY22 and ongoing	Regular and effective engagement and capacity building activities undertaken with all agencies responsible for disaster management in Ipswich.
2.3.4	Identify and support community-led disaster risk awareness, preparedness and recovery initiatives.	Internal collaboration	FY22 and ongoing	Effective community-led disaster risk awareness, reduction, response and recovery activities.

FOCUS AREA 4: CLIMATE RISK MANAGEMENT

Goal: Enhance Council's risk assessment process in relation to climate change and quantify the extent of climate change risks into Council's corporate risk register and risk management framework.

ACTION NUMBER	ACTION	DELIVERY MECHANISM/S	DELIVERY TIMEFRAME	MEASURE OF SUCCESS
2.4.1	Develop a climate change policy.	Internal collaboration	FY24	Climate Change Policy adopted
2.4.2	Undertake climate scenario analyses for physical and transitional risks for Council's operations and community assets to quantify climate risk for Council.	Internal collaboration	FY23/24	Climate risks across council's operations are identified
2.4.3	Develop a climate risk management strategy	Internal collaboration	FY24	Climate Risk Management Strategy adopted
2.4.4	Investigate opportunities to design for climate resilience, including support for sustainable buildings and green infrastructure, sustainable built environment elements in the planning scheme and advocating for more sustainable elements in building codes.	Internal collaboration	FY25	Council adopts sustainable building/ ESD principles for Council-delivered buildings and building codes
2.4.5	Incorporate and embed consideration of climate change within governance of our organisation demonstrated through key documents.	Internal collaboration	FY24	All of Council's corporate documents are updated to include references to climate change
2.4.6	Educate, communicate and report on the risks and opportunities associated with climate change to stakeholders, staff and community.	Internal collaboration	FY23	Report on climate change for the organisation at least annually via council's corporate annual reporting



PROGRESSED ACTION AREA 3: TRANSPORT AND MOBILITY

FOCUS AREA 1: SUSTAINABLE TRANSPORT

Goal: Increase awareness and support the use of sustainable transport options

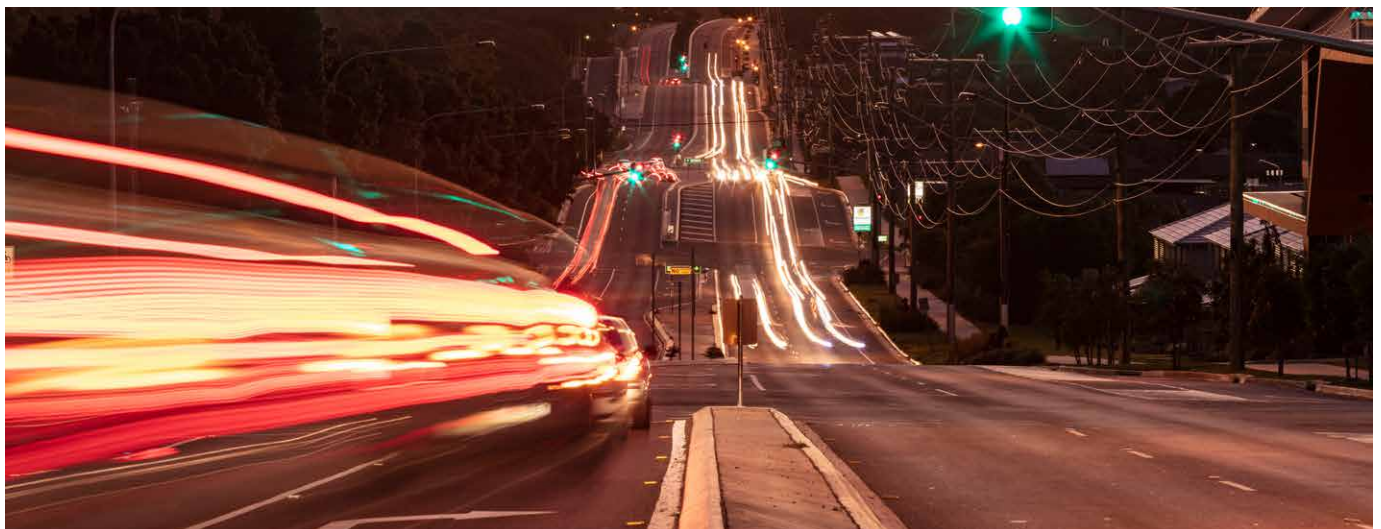
ACTION NUMBER	ACTION	DELIVERY MECHANISM/S	DELIVERY TIMEFRAME	MEASURE OF SUCCESS
3.1.1	Support and/or undertake public education and information campaigns and events that promote the benefits of sustainable transport modes.	Education and engagement	FY22 and ongoing	Number of events and participants in sustainable transport campaigns. Measure uptake of sustainable transport by community.

FOCUS AREA 2: ACTIVE TRANSPORT

Goal 1: Make active transport choices easy and achievable within the City to reduce the reliance on private vehicle use for short trips

Goal 2: Engender the health and wellbeing benefits of active transport choices within the community

ACTION NUMBER	ACTION	DELIVERY MECHANISM/S	DELIVERY TIMEFRAME	MEASURE OF SUCCESS
3.2.1	Plan, advocate and deliver end of trip facilities at all train stations, key bus stops and public transport hubs. Ensure that an appropriate number of different facility types are provided (i.e. secure bicycle cages for all day commuter parking, bicycle racks for shorter term parking).	Internal collaboration External collaboration	FY24	Council to deliver a public End of Trip Facility within the Ipswich City Centre.





PROGRESSED ACTION AREA 4: NATURAL ENVIRONMENT AND HEALTHY WATERWAYS

FOCUS AREA 1: NATURAL ENVIRONMENT AND CULTURAL LANDSCAPES

Goal: Important areas of native bushland habitat and vegetation are conserved and restored, and the city responds appropriately to climate change

ACTION NUMBER	ACTION	DELIVERY MECHANISM/S	DELIVERY TIMEFRAME	MEASURE OF SUCCESS
4.1.1	Adapt planning and delivery of environmental offsets, ensuring a long-term approach is implemented that addresses climate change impacts.	Internal collaboration	FY24	Environmental offsets include specifications to address climate change e.g. species selection, density, wetland capacity and extent/scale
4.1.2	Increase knowledge and model the impacts of climate change on threatened species and their distribution within Ipswich LGA.	Internal collaboration	FY24 and ongoing	Threatened species are modelled for climate risk scenarios

FOCUS AREA 2: WATERWAYS AND WETLANDS

Goal: Waterways and wetlands are rehabilitated and protected to provide ecological sustainability through good water quality, habitat and fauna connectivity, recreational outcomes and mitigation of major storm and flood events.

ACTION NUMBER	ACTION	DELIVERY MECHANISM/S	DELIVERY TIMEFRAME	MEASURE OF SUCCESS
4.2.1	Investigate and/or promote Cultural Water and its significance to maintain Cultural values.	External collaboration	FY24	Identify the key components of waterways and wetlands that are culturally and seasonally significant in Ipswich
4.2.2	Investigate the potential changes to our catchments' flow regimes under a changing climate to inform strategic management priorities.	Internal collaboration	FY23	Identify the strategic priorities/ changes after undertaking a climate risk scenario analysis



PROGRESSED ACTION AREA 5: WASTE AND RESOURCE RECOVERY

FOCUS AREA 1: IPSWICH WASTE SERVICES OPERATIONS

Goal: Deliver effective and efficient waste management through our people, processes and technology.

ACTION NUMBER	ACTION	DELIVERY MECHANISM/S	DELIVERY TIMEFRAME	MEASURE OF SUCCESS
5.1.1	Implement the actions from Council's Resource Recovery Strategy.	Internal collaboration External collaboration	2026 and beyond	Delivery of Resource Recovery Strategy

FOCUS AREA 2: CIRCULAR ECONOMY INDUSTRY COLLABORATION

Goal: Effective collaboration with local resource recovery sectors to improve market development, economic growth and to assist emerging bio-markets.

ACTION NUMBER	ACTION	DELIVERY MECHANISM/S	DELIVERY TIMEFRAME	MEASURE OF SUCCESS
5.2.1	Facilitate the uptake of the State sponsored ecoBiz sustainability program with small-to-medium businesses in Ipswich	Internal collaboration External collaboration	FY23 and ongoing	Hold an ecoBiz workshop with Ipswich business owners at least once per year

FOCUS AREA 3: CIRCULAR ECONOMY FOR THE COMMUNITY

Goal: For the Ipswich community to be actively engaged in circular economy activities including improved recycling and choosing to buy products with recycled content.

ACTION NUMBER	ACTION	DELIVERY MECHANISM/S	DELIVERY TIMEFRAME	MEASURE OF SUCCESS
5.3.1	Deliver targeted community engagement and awareness programs to improve waste avoidance, recovery and reuse behaviours.	Education and engagement	FY23 and ongoing	Quantified waste stream volumes indicating landfill diversion and higher recycling volumes
5.3.2	Deliver a Food Organic and Garden Organics (FOGO) program in the City.	New process External collaboration Education and engagement	FY23	Increase FOGO volumes recycled.



Ipswich City Council
PO Box 191, Ipswich QLD 4305, Australia

Phone (07) 3810 6666
council@ipswich.qld.gov.au
ipswich.qld.gov.au

Join us online:



/IpswichCityCouncil



/ipswich-city-council



/IpswichCityCouncilTV