

# Project Update

## Springfield Parkway and Springfield Greenbank Arterial Duplication Project

June 2025

The upgrade of Springfield Parkway and Springfield Greenbank Arterial in Springfield Central is advancing. As the largest road upgrade in council's history, both roads will be duplicated from two to four lanes to meet increased growth in the region. The project is being constructed in three stages with Stages 1 and 3 complete and Stage 2 early works underway.



### STAGE 2 EARLY WORKS UNDERWAY

**Stage 2 - Springfield Parkway duplication from the Old Logan Road Roundabout to Springfield Greenbank Arterial Stage 1 Intersection, Springfield.**

As a sub-arterial, Springfield Parkway currently supports over 19,500 vehicles per day connecting the priority growth areas of Springfield, Springfield Central, Camira and Goodna. With a future population growth expected to exceed 275,000 people, the duplication will benefit the Ipswich travelling community by providing:

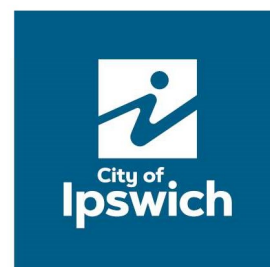
- Increased road capacity to support future population growth across the Springfield region
- Enhanced safety and accessibility
- Reduce traffic congestion
- Improve travel time efficiencies
- Improve connectivity between key growth suburbs
- Support connectivity to business, education, health and sporting centres across the region



Stage 2 construction corridor

### Key Features of Stage 2 will include:

- Widening of Springfield Parkway to duplicate from two to four lanes from Old Logan Road Roundabout to just north of the Springfield Greenbank Arterial Stage 1 intersection
- Springfield Parkway/Topaz Road/Woodcrest Way roundabout will be upgraded to a signalised intersection
- Rehabilitation repair of the existing lanes
- On road cycle lanes of 2m width will be constructed along the road corridor in both directions
- A 3m wide shared pathway will be provided along the entire length of the western side
- Upgrade and futureproofing of services including gas, water, sewer, telecommunications and electrical
- Stormwater drainage upgrades
- Street lighting upgrades
- Construction of 240m reinforced earth wall on the western corridor
- Road widening and new line marking on Springfield College Drive and Bridgewater Road approaches to the roundabout on Springfield Parkway will be undertaken allowing for two lanes of traffic.
- Landscaping.



## STAGE 2 CONSTRUCTION

In a follow on from improving drainage flows with construction of the 3.6m culvert under Springfield Parkway, early works for Stage 2 are ramping up ready for the duplication. Construction of Stage 2 will be completed in two phases:

- **Phase 1** - Early works to facilitate service upgrades and relocations
- **Phase 2** - Springfield Parkway duplication civil construction works

To keep communities connected and operating a number of services are located underground connected through pipe networks are placed in conduits for protection. To make way for the duplication these services will be required to be relocated. As the population grows this is an opportunity for service providers to upgrade and futureproof their services as part of the Springfield Parkway Upgrade. Phase 1 early works will provide for the relocation and upgrade of:

- Energex High Voltage lines
- Sewer lines
- Urban Utilities Watermain
- APA Gas
- Stormwater drainage network
- Telecommunication networks including Telstra, NBN, TPG and Optus.

As the majority of these services are located within the footpath and under Springfield Parkway and local connecting roads, temporary footpath and lane closures will be required to access, relocate and upgrade services. For the safety of the community, this work will include periodic closures of the footpath in College Drive and at the corner of College Drive and Bridgewater Road Roundabout. Some night works will occur at this location in the coming months to minimise traffic congestion during the day around local schools.

## COMMUNICATION DURING STAGE 2



For the duration of early works and civil construction for Stage 2, communication and stakeholder engagement will occur with residents, businesses, schools, pedestrians, motorists, cyclists and the greater Springfield Community.

With each major milestone or main construction activity where there may be some community impact, such as footpath access restrictions or temporary lane closures, notifications will be letterbox dropped to directly affected and adjacent stakeholders. In addition, where there are traffic impacts, variable message signs (VMS) and traffic signage will be in place to advise the travelling community of changed traffic conditions.

If you have any queries relating to the upgrade of Springfield Parkway you can contact council via [capitalprojects@ipswich.qld.gov.au](mailto:capitalprojects@ipswich.qld.gov.au) or call council on 07 3810 6666 from 8:00am – 4:30pm.

To learn more about the project you can use the QR code below or visit - [Springfield Parkway and Springfield Greenbank Arterial Duplication Project : Ipswich City Council](#)

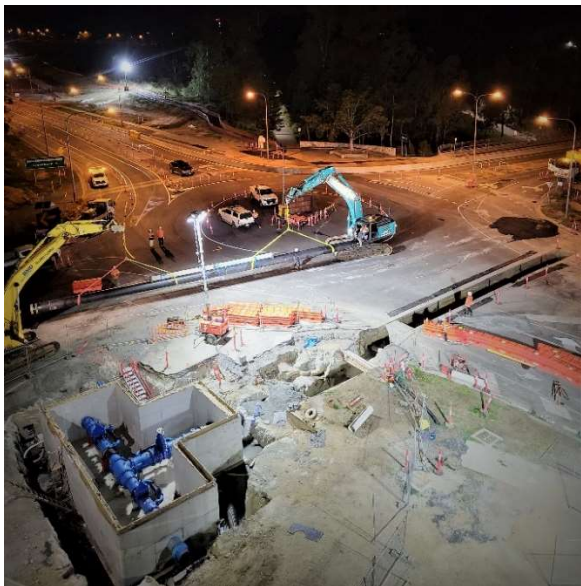


## STAGE 3 COMPLETE

### Stage 3 - Springfield Greenbank Arterial from Eden Station Drive to Sinnathamby Boulevard, Springfield Central.

Stage 3 is now complete and has delivered:

- Road widening for the full length of this section to duplicate from two to four lanes
- Springfield Greenbank Arterial/Main Street/Centenary Highway Exit 32 off-ramp signalised intersection
- New entry and exit point access at the existing Springfield Central Park'n Ride car park
- On road cycle lanes of 2m width along the road corridor in both directions
- Shared pathways for pedestrians and cycles ranging from 1.5-3m.
- Upgrade and futureproofing of services
- Stormwater drainage upgrades
- Street lighting upgrades
- Upgrading of Eden Station Road Intersection
- Landscaping



*Watermain Main Street, Sinnathamby Boulevard, Centenary Exit 32 intersection, Springfield Central*

### SPRINGFIELD GREENBANK ARTERIAL MAIN STREET CENTENERY MOTORWAY EXIT 32 INTERSECTION

The Centenary Motorway Exit 32 Off Ramp, Main Street and Springfield Greenbank Arterial

intersection is now complete and fully operational. The past few months have seen the installation of CCTV cameras and final asphaltting, line marking and landscaping. The project team have appreciated the feedback received from the community regarding the traffic light sequencing which has been monitored over the past few months with the final sequencing now complete. Council upgraded the Centenary Motorway Exit 32 off ramp on behalf of the Department of Transport and Main Roads as part of Stage 3 works.



*Main Street, Sinnathamby Boulevard, Centenary Exit 32 new signalised intersection*

Using the Geotechnical investigation monitoring and advice, the batter at the Exit 32 off ramp has been stabilised with a rock and rail ballast toe support to prevent further movement. This work allows the final layer of asphalt to be laid to Exit 32 and the line marking to be completed with all four lanes opening and signalling the end of Stage 3. We thank the travelling public for their patience during construction in a highly populated high traffic area. Work moving forward will include landscaping maintenance to promote growth and health of landscaped vegetation along the Stage 3 corridor.



*Exit 32 off ramp rehabilitation*

## NEW IPSWICH PLANNING SCHEME



Our City of Ipswich is a key regional growth area in South-East Queensland that is growing and changing at a fast pace. The current population of Ipswich is approximately 253,000 people and is expected to grow to 535,000 by 2046.

Council has prepared a new planning scheme, Ipswich City Plan 2025 (previously titled Ipswich Plan 2024), to help us plan for our growing and changing city over the next 20 years.

Planning scheme's help shape our neighbourhoods, towns and cities. The new planning scheme aims to identify what areas to protect, what areas to build on, where we can set up businesses or go shopping, what services are needed for a thriving community, types of housing for people to live in and transport options to move around the city.

The new planning scheme for Ipswich will set out the future vision for our council area over the next 20 years by considering the following themes:

- Great Places
- Infrastructure
- Housing
- Resilient Communities
- Open Space and Environment
- Transport and Movement
- Economy and Employment
- Heritage and Cultural Values

Due for release on 1 July 2025 the plan envisages the right Infrastructure to support our people, the economy and jobs, such as transport, open space, parks and community facilities. More information on the scheme can be found at:



[New Ipswich Planning Scheme | Shape Your Ipswich](#)

## THANK YOU

For Stage 3, duplicating Springfield Greenbank Arterial, constructing a signalised intersection and widening the Centenary Motorway Exit 32 in a busy shopping, education, business and sporting precinct has presented many challenges for the Springfield Central community and delivery teams. For the duration of this stage, the council stakeholder team have notified the community of upcoming construction works and changed traffic conditions with over 80 notification of works, 40 social media notifications and 60 stakeholder meetings. In addition, over 150 queries and complaints have been investigated and resolved. We appreciate and value the local knowledge of the Springfield community and the feedback provided.

If you wish to be involved in providing feedback to council, one of the ways council engages with the community on shaping the future of Ipswich is through the community panel. Panel members can opt-in or out of engagement opportunities as they like, and a variety of forums will be offered. The community panel complements existing community engagement forums in Ipswich - [Community Panel : Ipswich City Council](#)

As Stage 3 ends we thank the Springfield Central and greater Springfield community for their patience, feedback and collaboration during construction of Stage 3. We look forward to working with the community across the construction and delivery of Stage 2, the final stage in the upgrade.

## CONTACT US

To find out more about the project, you can contact us or by visiting the dedicated project webpage via QR link below:



**PHONE** – 07 3810 6666 (8am-4:30pm)

**@** [capitalprojects@ipswich.qld.gov.au](mailto:capitalprojects@ipswich.qld.gov.au)