

# Ipswich City at a Glance

**Total 2017-2018 Budget is \$479 million**

## Concessions

Maximum pensioner concession continues on rates and charges of up to **\$245 per year**. Early payment discount of up to **\$132 per year**.

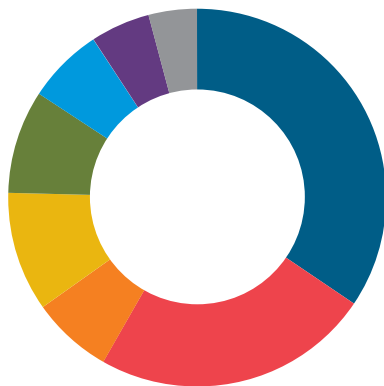
## Average increase

Average residential owner occupier increase is **2.95%** or **\$0.85 per week**.

## Residential net rates and charges for 2017-2018\*

Average residential owner occupier general rate	\$1,280.83
Wheelie bin collection charge	\$346
Enviroplan Levy	\$44

\*based on average residential property



Roads, Drains and Bridges	32%
Parks, Open Space and Green Environment	25%
Economic Development	6%
Waste Collection and Management	9%
Cultural Services	14%
Community Health and Safety	6%
City Planning	4%
Sport and Recreation	4%



**\$146 million**

in total infrastructure spending – up 46%



**\$30.3 million**

for road, park and bridge improvements



**\$19.7 million**

for road upgrades, drainage and flood mitigation



**\$16.3 million**

for landscaping and vegetation management

# Cr Wayne Wendt Division 5

## Budget Overview

More money than ever before will be invested in roads, bridges and community facilities under Ipswich City Council's 2017-2018 Budget.

The environment is another big winner with funding for conservation estates, supporting koala and platypus populations and promoting sustainability through popular community events.

A bumper line-up of arts, cultural and heritage programs will also be delivered.

Highlights include more than \$1 million for improving roads in Basin Pocket, Booval, Chuwar, East Ipswich, Karalee, Muirlea, North Booval and Tivoli and \$78,000 to replace a pedestrian bridge at Karalee.

An additional \$349,000 has been allocated for replacing kerb and channel along sections of Blackwood, Cardew, Lawrence and Marcel streets as well as Chermside Road.

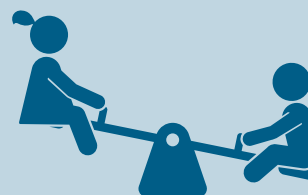
For more information on the  
2017-2018 Ipswich City Council Budget visit  
[ipswich.qld.gov.au/budget](http://ipswich.qld.gov.au/budget)



Shop 1, Jacaranda Centre,  
2-3 Jacaranda Street,  
East Ipswich  
(07) 3281 8700  
[wayne.wendt@ipswich.qld.gov.au](mailto:wayne.wendt@ipswich.qld.gov.au)

 Facebook.com  
[/WayneWendt4Division5](https://www.facebook.com/WayneWendt4Division5)

## Major Projects and Initiatives



### \$1 million

for upgrading parks



### \$1 million

for repairing and modifying the  
North Ipswich Woollen Mills



### \$1 million

for improving local roads



### \$500,000

for upgrading facilities at the  
Booval bowls club