

Fact Sheet

Disaster Management Overview

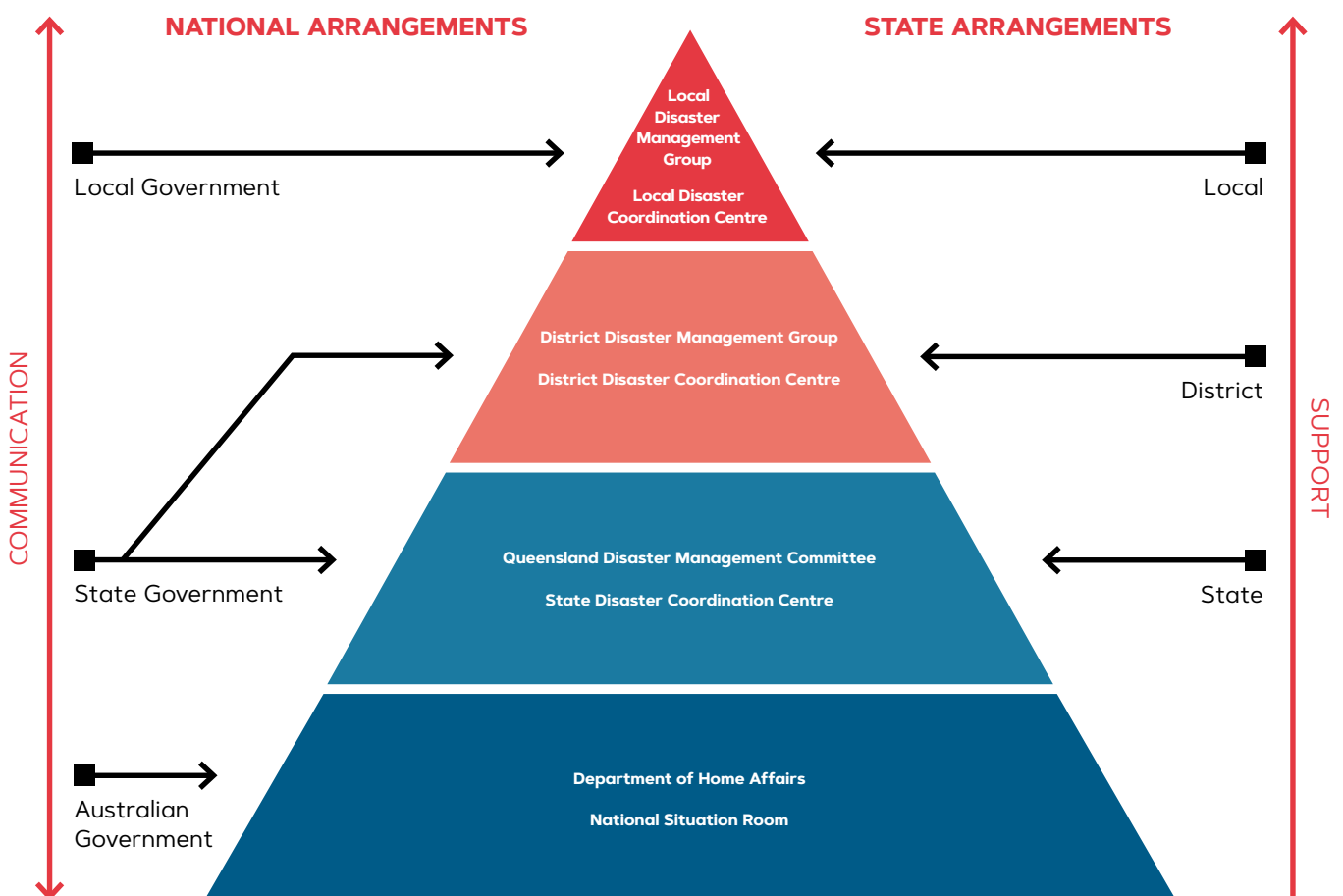
Queensland's Disaster Management Arrangements

The *Disaster Management Act 2003* is the governing legislation – this Act establishes local governments as being primarily responsible for managing disaster events through the Local Disaster Management Group (LDMG).

This group is however bound by strong legislative instruments and guidance from the state. The group

comprises of Mayor Harding as the Chairperson and Cr Kunzelmann as the Deputy Chairperson and external entities.

The Local Recovery and Resilience Group (LRG) is a sub-group under the LDMG which is chaired by Cr Kunzelmann.



For more information about the disaster management arrangements visit: ipswich.qld.gov.au/disasterplans.



Getting Information

Obtaining information during disasters can be difficult due to the changing situation. You can sign up to receive notifications at the below links:

Biosecurity alerts

- **Department of Agriculture and Fisheries**
Daf.qld.gov.au/news-media/alerts

Bushfire and emergency incidents

- **Queensland Fire and Emergency Services**
Qfes.qld.gov.au/Current-Incidents

Dam release notifications

- **Seqwater**
Seqwater.com.au/dam-release-notification-service

Earthquake notification service

- **Geoscience Australia**
Earthquakes.ga.gov.au

Health alerts

- **Queensland Health**
Health.qld.gov.au/news-events/newsletter

Police notifications

- **Queensland Police Service**
Mypolice.qld.gov.au/ipswich

Weather and fire conditions

- **Ipswich City Council, My Ipswich Alerts**
Ipswich.qld.gov.au/myipswichalerts
- **Disaster Dashboard**
Disaster.ipswich.qld.gov.au
- **Bureau of Meteorology**
Bom.gov.au

Council's role

- Act as Secretariat to the LDMG and LRG.
- Ensure that it has a disaster response capability.
- Ensure the continuity of essential local government services including, but not limited to public health, waste, maintenance of parks (including debris clearance), city-controlled roads and bridges, animal control and environmental protection.
- Conduct and implement community education and awareness programs.
- Maintain flood telemetry (measurement) and warning systems within the LGA and collect, analyse, and disseminate information from these systems in conjunction with the Bureau of Meteorology (BoM).
- Coordinate immediate recovery needs in conjunction with partner organisations.

Our top natural hazard risks



For more information about the disaster management arrangements visit: Ipswich.qld.gov.au/disasterplans.

Our aim for the community

We recognise that the increasing frequency and intensity of disasters will cost government and community. We want to encourage action and decisions that enable a level of personal responsibility, in short:



Funding

Council is responsible for costs of any activities; services or functions it undertakes or initiates.

Council may be able to claim back costs incurred. This is heavily regulated and for very specific items. We are unable to cover the costs of any core activities such as employee day labour costs diverted to support disaster operations.

Our trigger for counter disaster funding is expenditure of \$240,000 in the local government area.

For support with assets our trigger is in excess of \$1.2million. The funding arrangements are very clear in their intention that it will not replicate insurance gaps or lack of insurance either for public or private damage.

Community preparedness resources

- Council has produced a number of videos for use on social media, featuring Auslan interpretations:
[Youtube.com/playlist?list=PLf6aRmYsGYXa78VxSOmK0kwfRygJqQiot](https://www.youtube.com/playlist?list=PLf6aRmYsGYXa78VxSOmK0kwfRygJqQiot)
- On the Emergency Management website (Ipswich.qld.gov.au/emergency) there is the following resources:
 - Emergency checklists
 - Disability preparedness
 - Property checks
 - Advice on animals, bushfire readiness, storms, flood and dam safety
 - Simplified English and pictorial cards
 - School education resources
 - Community business continuity resources.

Updated August 2021

