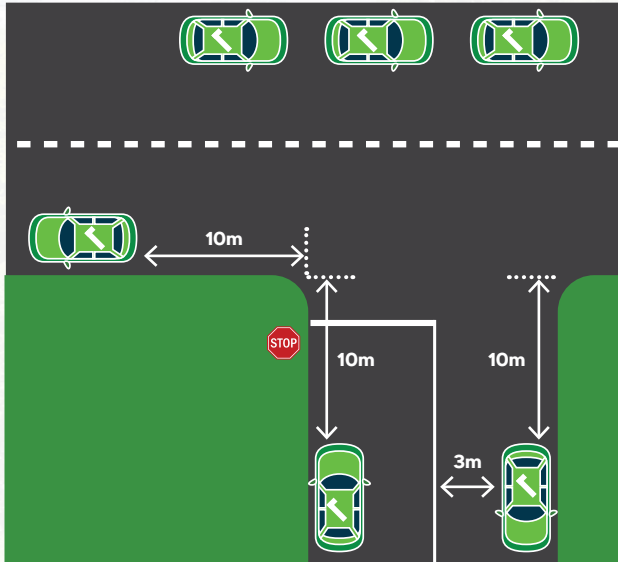


Stopping in or near an intersection.

Where there is an intersection without traffic lights, your vehicle needs to be at least 10m from the corner.

You may park on the continuous side of the intersection unless otherwise signed.



Parking Do's

Allow for at least 3m of road alongside a vehicle that is parked on the road so the road is clear for other vehicles to pass.

Allow for at least 10m when parking near an intersection.

Allow for 20m when parking near a set of traffic lights.

Parking Don'ts

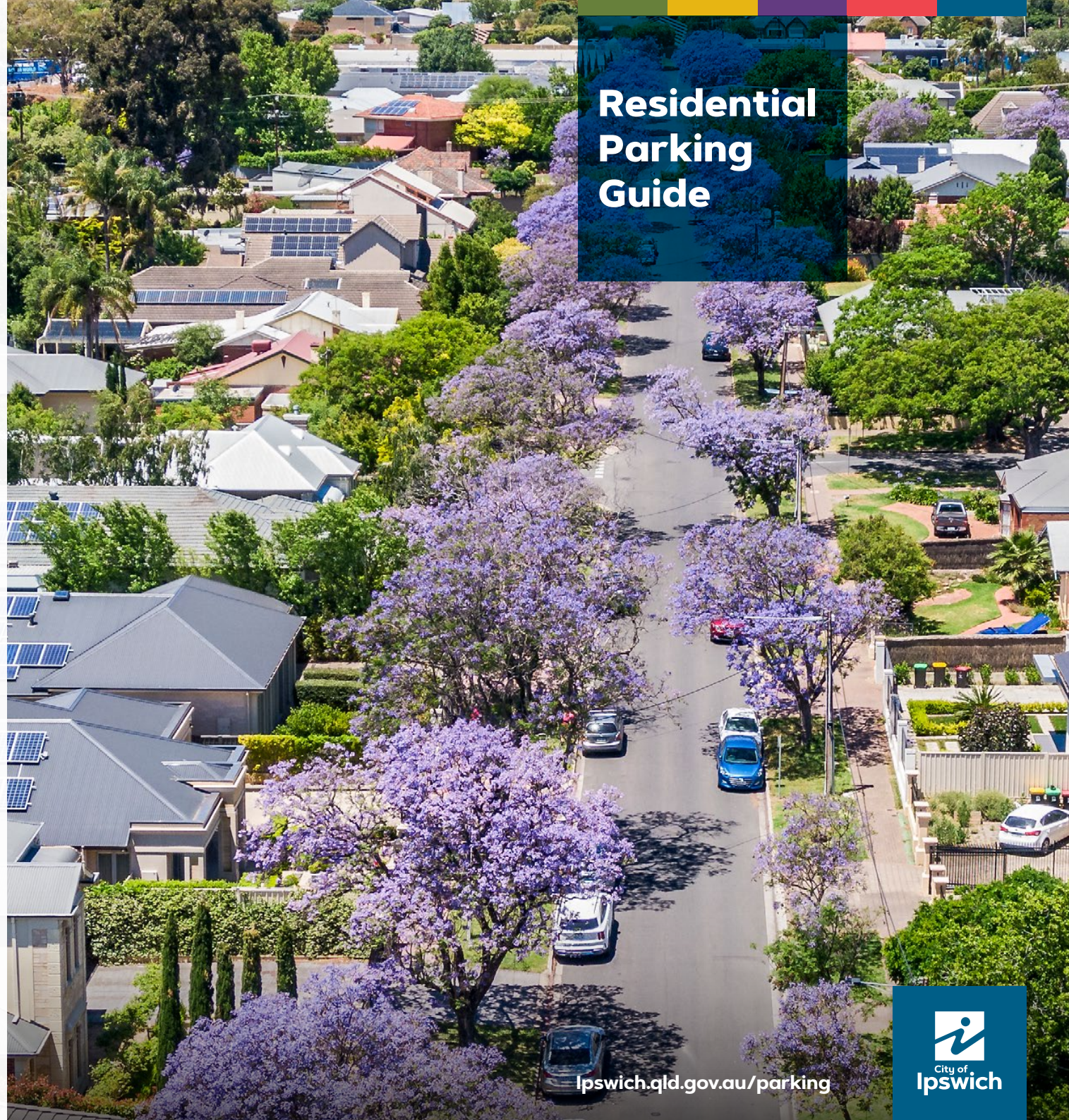
Park on the footpath/nature strip (regardless of whether there is a concreted walkway).

Park in your own driveway (unless you are picking up or dropping off passengers).

Park on the road or the road related area (nature strip) facing the wrong direction of traffic.

Park too close to an intersection.

Residential Parking Guide

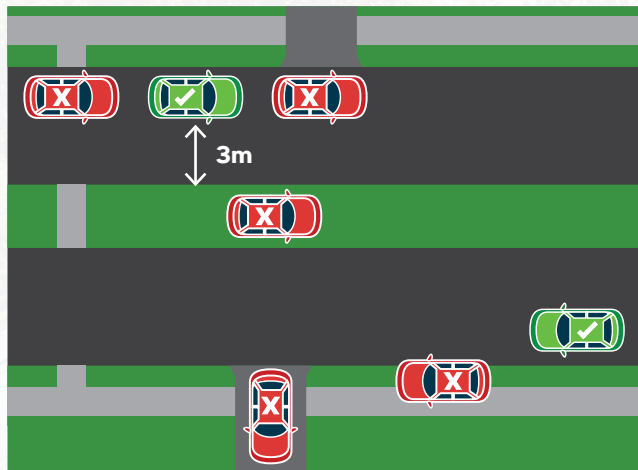


The Transport Operations (Road Use Management) Act 1995 and the Transport Operations (Road Use Management – Road Rules) Regulation 2009 sets out the provisions for the parking of vehicles on roads and road related areas in Queensland. Ipswich City Council is delegated by the State Government to enforce this legislation.

Parking enforcement is one of the ways in which Ipswich City Council is helping to ease congestion and improve safety for motorists and pedestrians. Council enforces parking regulations by responding to complaints and carrying out proactive patrols.

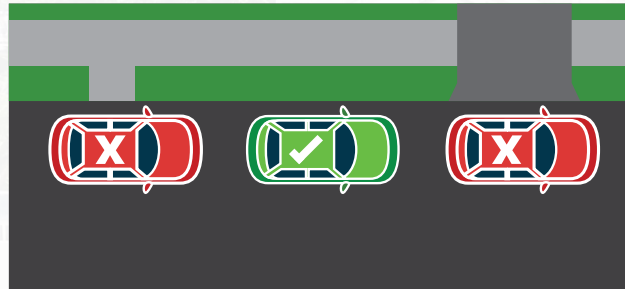
Stopping on a path, dividing strip, nature strip, painted island or traffic island.

Unless otherwise signed, don't park on or across footpaths, nature strips, driveway crossovers, median strips, painted islands or traffic islands.

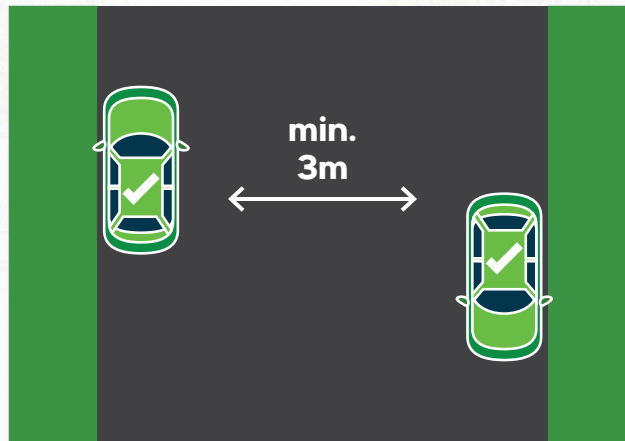


Obstructing access to and from a footpath, driveway, etc.

Don't obstruct access to kerb ramps, driveways, bike paths and passageways.

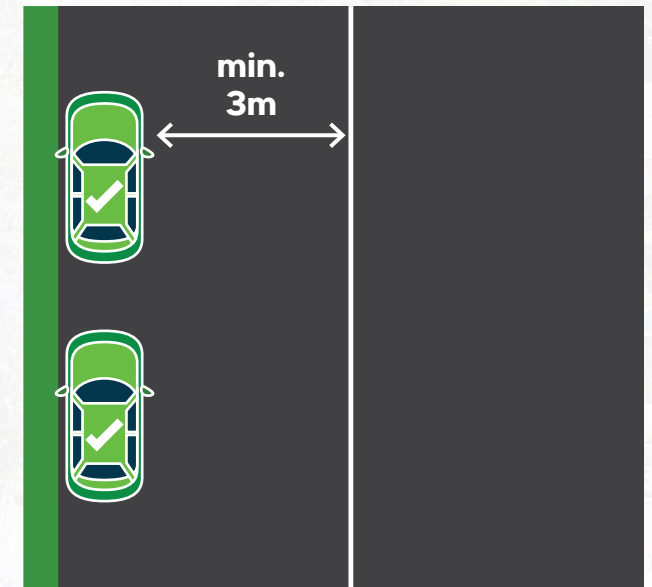


Always leave at least three metres of roadside clear beside your vehicle so other motorists can pass.



Parallel parking on a road or road related area (except in a median strip parking area).

- When you park on a road or in a road related area (except in a median strip parking area) you must park parallel to the road and facing the correct direction of travel.
- You must park, as near as practical, to the far left side of the road and make sure your vehicle is not unreasonably obstructing the path of other vehicles or pedestrians.
- If the road has a continuous dividing line or dividing strip, you must leave at least 3m between your car and the dividing line/strip.



What is a footpath/nature strip?

It's the area located between the property boundary and the road. Parking within this area is prohibited.



Failure to comply with parking rules may result in a fine.