

Project Update

Springfield Parkway and Springfield Greenbank Arterial Duplication Project

March 2024



The upgrade of Springfield Parkway and Springfield Greenbank Arterial in Springfield Central is advancing. As the largest road upgrade in council's history, both roads will be duplicated from two to four lanes to meet increased growth in the region. The project is being completed in three stages with Stage 1 complete, Stage 3 currently under peak construction and Stage 2 at early works stage.

STAGE 1

With Stage 1 construction now complete, the team is working to maintain vegetation along the route. Extreme heat, over 400mm of rainfall and storms in recent months have presented some challenges for the team which they are working through to ensure the landscaping takes to the new environment and thrives.



Stage 1 - Landscaping Springfield Greenbank Arterial

The new lanes on Springfield Parkway and Springfield Greenbank Arterial are flowing well and managing over 20,000 vehicles per weekday. This upgrade is vitally important to improving safety and making travel easier for the growing Springfield community. The team's focus now turns to completing Stage 3 and progressing Stage 2.



Stage 1 - Springfield Parkway Springfield Greenbank Arterial intersection

STAGE 2

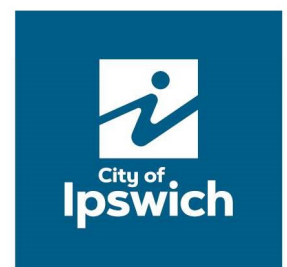
Springfield Parkway from Topaz Road connecting to Stage 1 below Bridgewater Road Roundabout

Early Works started in December with the extension of 3.6m culvert beside Hymba Yumba Independent School and while there was substantial early progress, there were some delays due to ongoing rain and storms, although the overall delivery program for the drainage is still on track.

Constructing effective stormwater drainage networks for the duplication project while maintaining the current network during the Queensland storm season has been worrying for the team. However, they are committed to ensuring the highest quality innovative network is constructed across the project and adjacent to the school, while maintaining sensitive ecological areas.



Stage 2 - Drainage culvert location



Once the Culvert Works are complete, Stage 2 work in 2024-2025 will include service relocations, civil construction, stormwater, footpaths, lighting, street signage, line marking and road pavement rehabilitation.

Service Relocations:

- Energex HV
- Urban Utilities Watermain realignment
- APA Gas realignment and upgrade
- Communications upgrade including Telstra, NBN, TPG and Optus.

Civil Scope:

- Duplication of Springfield Parkway from Topaz Road connecting to Stage 1 just past Bridgewater Road Roundabout
- Minor selective vegetation clearing
- Earthworks
- Stormwater drainage and kerb and channel
- Road pavement construction and rehabilitation
- Footpath, lighting and street signage
- Landscaping.



Stage 2 - Springfield Parkway Duplication Design

STAGE 3

Springfield Greenbank Arterial from Eden Station Drive to Sinnathamby Boulevard

Stage 3 has experienced significant rainfall and storm activity over the past few months which has impacted vegetation and landscaping with the flooding of Mountain Creek. The team is working to restore certain plants that were damaged and stay on top of the weeding and mowing within the construction corridor. Despite recent weather the crews have progressed electrical, stormwater drainage networks and new Park'n'Ride entry pavements.



Stage 3 - Mountain Creek Springfield January 2024

Sustainability

Sustainability has been front of mind for the team who have utilised existing materials and implemented innovative environmental controls. Core logs were used in the bottom of the rock embankment to minimise silt washing onto the pavement and into drainage and waterways. This is a key environmental management feature of the off ramp and across Stage 3 of the project.



Stage 3- Core Logs Centenary Motorway Exit 32 off ramp

Stage 3 Resources and Materials

A significant amount of resources and materials are being used to construct and upgrade Stage 3 of the project. Road construction enables services to be created or upgraded at the same time that can be utilised well into the future, thus supporting the population growth of the region. Constructing in a busy activity centre with major shopping, business, education and public transport is providing numerous challenges especially with the number of people that pass through Stage 3 each day. At the peak of Stage 3 construction, the team is progressing with the installation and construction of:

- Over 1400m of stormwater pipes
- Over 3500m of kerbing
- Nearly 2000m of footpath network
- 3700m of telecommunication network
- Over 34000m³ of excavation
- Over 10000 tonnes of asphalt
- 36,000 landscaped plants.

Springfield Central Eastern Car Park

The Department of Transport and Main Roads (TMR) has commenced works to reconfigure and reopen the Queensland Rail carpark east of Springfield Central station. The carpark, located at the southern end of the Brisbane Lions facility, will remain closed while construction activities are undertaken, with an expected completion by mid-2024, construction and weather conditions permitting.

Works to reopen the carpark include the installation of new asphalt, concreting edging, new lighting, and line marking. Works already completed include detailed surveying and electrical investigations. To accelerate delivery of the reconfiguration TMR has engaged BMD Construction, who are currently undertaking Stage 3 of the Springfield Parkway and Springfield Greenbank Arterial Duplication Project.

When reopened, the eastern carpark will complement the parking facilities already available within the Springfield Central train station precinct. The opening of the multi-storey park 'n' ride off Springfield Greenbank Arterial in April 2022 increased the number of spaces around the train station precinct to around 1,100. The Queensland Government committed \$44.5 million to construction of the multi-storey facility, which features elevators, additional accessible parking spaces close to the station and greater security through CCTV and lighting.

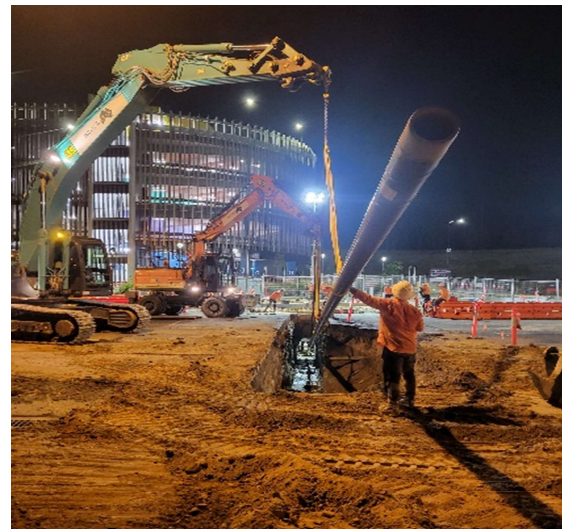
For more information on the eastern carpark reconfiguration works, contact TMR by calling 3066 4338 or emailing metropolitanregion@tmr.qld.gov.au



Stage 3 - Eastern car park reconfiguration

Centenary Motorway Exit 32 off ramp

Construction activity behind and adjacent to the off ramp is progressing with watermain works, stormwater, electrical and landscaping nearing completion. The large watermain pit, all underground utility connections and drainage networks will be commissioned and future proofed prior to the final asphaltting of the upgraded four lane off ramp.



Stage 3 - Pipe laying towards Exit 32 off ramp

When complete the upgrade will replace the existing Centenary Motorway exit ramp with 2 through lanes and 2 left-turning lanes on the approach to the roundabout on Springfield Greenbank Arterial Road. Adding more lane options on the exit ramp will manage congestion and improve traffic flow and safety. At the intersection, the existing right-turning movement will be removed to:

- optimise performance of the signalised intersection
- improve reliability in travel times
- enhance safety for all road users.



Stage 3 - Springfield Greenbank Arterial Duplication Design

iGO Transport Plan

The City of Ipswich Transport Plan, known as iGO is Ipswich City Council's masterplan for Ipswich's transport future. The plan responds to current and future transport challenges and outlines council's aspirations to advance the city's transport system to accommodate a future population of 435,000 people. iGO is a strategic long-term plan with a range of policy focus areas, network maps and actions. The outcomes of iGO will be delivered over the coming years to shape a sustainable transport future for Ipswich.

A key action of this plan was to duplicate Springfield Parkway Springfield Greenbank Arterial to further develop the road network as the population increases across the region. Springfield in the plan is deemed a Regional Activity Centre and by definition is a Regional Activity Centre serves a catchment of regional significance and accommodates concentrations of employment. The Ipswich CBD and Springfield are the Principle Regional Activity Centres identified for Ipswich. The Springfield Parkway Springfield Greenbank Duplication Project is integral to easing traffic congestion in a high growth area and with Stage 1 complete, Stage 3 at the peak of construction and Stage 2 early works commencing by 2025 the duplication will benefit motorists, commuters, bike riders and pedestrians well into the future. To learn more about transport planning across Ipswich view the iGo Transport Plan and sub plans here - [iGO City of Ipswich Transport Plan : Ipswich City Council](#)



Stage 3 - Exit 32 construction

Supporting local business

For over two years now our project team and contractor BMD have been guests in the community while we duplicate Springfield Parkway and Springfield Greenbank Arterial. It is important for our teams to support local businesses for the duration of all three stages of the project. From materials, fuel to food the team has injected more than \$1,000,000 to date into the local community as direct and indirect spend with more to come.

Many of our team live and work in the Springfield region and value the opportunity to be part of upgrading Springfield Parkway and Springfield Greenbank Arterial in a growth area of the South East.

Easter Shutdown

Construction activity within Stage 3 will cease over the Easter period from Thursday afternoon 28 March through to 1 April 2024 inclusive. The team will be returning to work in Stage 3 on Tuesday 2 April 2024 for day works. We hope you and your family have a happy and safe Easter.



Thank You

The project team appreciates your patience and understanding as we construct this major infrastructure project within the Springfield community.

Contact Us

To find out more about the project, you can contact us or by visiting the dedicated project webpage via QR link below:

PHONE – 07 3810 6666 (8am-4:30pm)

@ capitalprojects@ipswich.qld.gov.au