

Sustainable Ipswich



2022 PROGRAM
EVENTS
ACTIVITIES
INSPIRATION

ipswich.qld.gov.au/sustainability

WHAT IS SUSTAINABLE IPSWICH?

Sustainable Ipswich is an annual celebration of everyday actions we can take as a community to create a more liveable city.

It is an opportunity for the community and local businesses to be involved in promoting and celebrating sustainability and our environment.

Sharing stories, knowledge and ideas help us all live, eat and play the sustainable way!

By working together and making informed choices, we can create a liveable and resilient city for current and future generations.



SUSTAINABILITY STRATEGY

The Sustainability Strategy details how Ipswich City Council will increase existing efforts, and implement new actions, towards making Ipswich a more sustainable place to live as the city continues to grow.

The strategy presents five key Action Areas:

- 1. Sustainable Council**
- 2. Climate Adaptation**
- 3. Transport and Mobility**
- 4. Natural Environment and Healthy Waterways**
- 5. Circular Economy**

The Sustainability Strategy outlines the goals, targets and actions council will take to deliver sustainability outcomes for the City of Ipswich.

These Action Areas have been interwoven into Sustainable Ipswich themes and activities.

You can find the Sustainability Strategy at ipswich.qld.gov.au

PROGRAM SNAPSHOT

The season is a mix of council and community events and activities providing strong sustainability outcomes for the City of Ipswich.

Various Dates	Mobile Nursery, various locations Bushcare Working Bees, various locations
4-18 October	World Habitat Day – Your Backyard Matters workshop series
8 October	Upcycled Rag Rugs workshop, Ipswich Central Save money and stop food waste sessions, Ipswich Central Recycled material play sessions for kids, Ipswich Central
10-16 October	Get Ready Week, citywide
15 October	International Repair Day Native Plant Sale, Rosewood
17-23 October	Aussie Backyard Bird Count, citywide
19 October	Youth Sustainability Summit, Ipswich Central Urban Heat Island Effect virtual reality experience, Ipswich Central Ride to Work Day, citywide
20 October	Rider Confidence Workshops, Ipswich Cycle Park, Raceview
22 October	Ipswich Plant Swap and Community Garden Basics, Leichhardt Ripley Town Centre beeswax wraps workshops Gardening With Native Plants, Rosewood and Springfield Libraries
23 October	Sustainable Open Garden Trail
28-31 October	Great Southern Bio-Blitz with Springfield Lakes Nature Care
29 October	Urban Heat Island Effect virtual reality experience, Ripley
7-13 November	National Recycling Week, citywide
November	Garage Sale Trail, citywide

See the full program at ipswich.qld.gov.au/sustainability

AIMING HIGH FOR WASTE DIVERSION



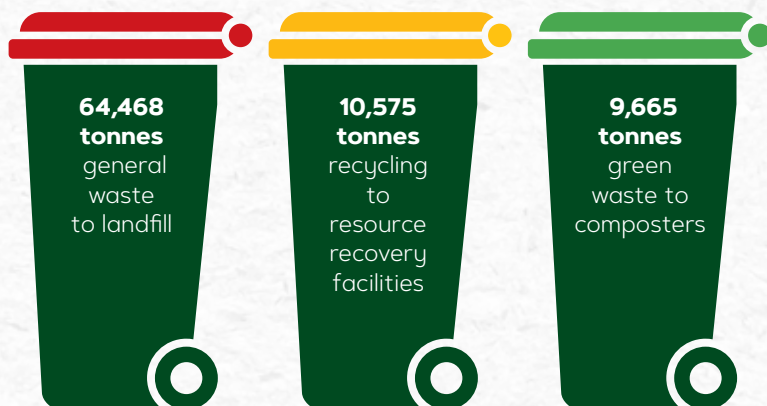
Ipswich has ambitious targets we must reach to divert waste going to landfill. It's going to take a whole of community response to get there.

- 95% of the waste our city generates has to be diverted from landfill by 2050
- We have to increase recycling of our city's waste by 70% by 2050

Managing the waste we create

On average, a household in Ipswich generates about 1 tonne of waste and recyclable material each year.

In total 84,708 tonnes of material was managed via Ipswich's residential kerbside collection service (FY 2021-2022).



Resource Recovery Strategy

Council's Resource Recovery Strategy sets actions over the next 10 years to meet our ambitious waste reduction goals.

See the Resource Recovery Strategy at ipswich.qld.gov.au/waste

NEVER MISS BIN DAY AGAIN!

The free Ipswich Bin App features bin day reminders, waste sorting tips and info on services in your area.

Download via the App Store or Google play



A FAST WAY TO MAKE A BIG IMPACT

Food and organic waste in landfill are massive contributors to Ipswich's landfill CO₂-e emissions.

In 2020 about 38 per cent of emissions from our city's landfilled waste (38,000 tonnes of CO₂-e) could have been avoided if organic material was captured and composted.

The good news is, it's easy to divert food and garden organics today!



FOGO – Food Organics, Garden Organics

Ipswich's green waste kerbside collection (the lime green lid bin) is now known as Food Organics Garden Organics (FOGO).

This is more than just a name change – this opt-in bin diverts a range of organic waste from landfill beyond garden clippings and green waste.

About 1000 Ipswich homes are participating in a FOGO trial. This provides valuable information about the challenges and opportunities of FOGO bins for everyone. See more at ipswich.qld.gov.au/FOGO

What **CAN** go in your FOGO bin



Food scraps and leftovers



Meat scraps and bones



Garden waste



Dairy products



Used paper towel and tissues



Shredded and soiled paper



Pet waste and animal manure



Australian certified compostable items – look for the seeding logo.



BIG DAY OF SUSTAINABLE INSPIRATION



Nicholas Street Precinct will be a hive of activity with a collection of free sustainability speakers and activities.

Peruse the many stalls at the Handmade Expo Market and source local and quality items. Then make sure to check out what's happening in council's 1 Nicholas Street building!

🕒 Saturday 8 October

📍 Level 1, 1 Nicholas Street, Ipswich Central

- **How to save waste and save money**
- **Nicole Lutze & Rose Rush 'eco granny'**

Be inspired to make small changes that will have a big impact.

- **How to compost and FOGO like a pro**
- **Mallow Sustainability**

Find out what method might work for you and how to troubleshoot common issues.

- **Recycled material play session**

Drop in with the kids and see what you can create from an assortment of items.



🕒 Saturday 8 October

📍 The Bubble, ground floor,
1 Nicholas Street, Ipswich

- **Upcycled Rag Rugs**

Learn techniques to make your own no-sew rag rug with the Sewloist.

Registrations essential
[ipswichlibraries.com.au/whats-on](https://www.ipswichlibraries.com.au/whats-on)

Presented by Ipswich Libraries

CIRCLE OF LIFE FOR PRE-LOVED ITEMS



The term 'circular economy' describes a system where materials and products are reused and recycled to retain their value for as long as possible.

It's the opposite of our modern linear system, which turns raw minerals into a product that is thrown away after use.

A circular economy saves waste, saves money and saves resources. And there's easy ways you can join in!



INTERNATIONAL REPAIR DAY

🕒 Saturday 15 October

Do you have a household appliance or item that's not at its best?

Save it from landfill by fixing it for International Repair Day.

Check out the Australian Repair Network.



GARAGE SALE TRAIL

🕒 November 2022

This is Australia's festival of pre-loved stuff with two big weekends of bargain hunting in November. You can register your own garage sale, or wait for the event to go searching for second-hand treasure!

Info at Garagesaletrail.com.au



PLANT TREES FOR A SUSTAINABLE CITY



Urban greening is an important part of creating a resilient, sustainable and liveable city.

It has multiple benefits for people and the environment, including:

- Mitigating climate change impacts and storing carbon
- Providing shading and cooling and reducing urban heat island effect
- Absorbing air pollutants and filtering stormwater
- Increasing neighbourhood aesthetic values and mental and physical health
- Providing food and habitat for native animals

URBAN GREENING PLAN

Council recently adopted an Urban Greening Plan to increase canopy cover across high priority suburbs.

Targets include:



Delivery of **planting day activities** and promotion of urban greening



90 per cent of **urban greening plantings** reach healthy maturity



increase canopy cover by a minimum of 10 per cent by 2042 in high priority suburb street and road reserves.



50 per cent of new landscape plantings to be **local native species**



All greening projects to incorporate **opportunities for habitat, feeding and nesting and waterway health improvements**



IT'S A GREAT TIME FOR GARDENING – DIG IN!



Spring is calling and whether you're a green thumb or garden novice you can improve your local environment.

Free plants and free advice are freely given during Sustainable Ipswich.

FREE PLANT PROGRAM

Claim 6 free plants each year with presentation of rates notice or other proof of residency.

Plant species suit local climate and conditions and are proudly grown in council's production nursery.

Find out more details at ipswich.qld.gov.au/free-plants

- Queens Park Nursery, open limited hours
Wednesdays, Thursdays, Saturdays
- Mobile Nursery, dates and locations include:
 - **8 October**
Evan Marginson Park, Goodna
 - **15 October**
Johnston Park, John Street
 - **29 October**
Brassall Shopping Centre carpark



IPSWICH PLANT SWAP AND COMMUNITY GARDEN BASICS

- 📍 Leichhardt One Mile Community Centre – community garden
- 📅 Saturday 22 October: 9.30 am – 1.00 pm

Join Ipswich Plant Swap and exchange garden goodies with like-minded people.

From 11.00 am join Savour Soil Permaculture to learn about local food systems and food security, preparing your soil and garden planning.

HOW TO CREATE A HABITAT GARDEN



Ipswich residents - just like you - are transforming urban gardens into wildlife-friendly spaces.

When you see what can be achieved in a short time it can provide all the motivation you need to launch into your own project.

SUSTAINABLE OPEN GARDEN TRAIL

🕒 Sunday 23 October

Join a trail of four different gardens full of inspiration for you to take home. See how low-maintenance native plants can be not only appealing but create bird and bee-friendly backyards.

*Pre-registration required.

See ipswichcitycouncil.eventbrite.com



HABITAT GARDENS

Through the Enviroplan initiative council offers a free Habitat Gardens landholder partnership.

Habitat Gardens is designed for people with urban blocks and supports them to make a positive contribution to Ipswich's natural environment.

For a five-year commitment, landholders have access to workshops, resources, 20 additional free plants each year and more.

Search 'Landholder Conservation Partnerships Program' at ipswich.qld.gov.au



AUSTRALIAN WILDLIFE WEEK AT QUEENS PARK

📍 Queens Park Environmental Education Centre

Starting from Tuesday 4 October a series of activities and workshops will be held for all ages.

Exciting sessions will be held with hosts such as Kate Wall and Jonathan Gregory.

CELEBRATING OUR NATIVE PLANTS



There are many reasons to love Australia's native flora.

A garden brimming with native plants brings so many benefits:

- They need minimal maintenance once established
- They need less water and are more resilient to our harsh climate
- They provide food and habitat for local birds, butterflies, frogs and more
- They can suit any style such as formal, informal and edible gardens.

NATIVE PLANT SALE AND ENVIRO DAY

Native Plants Queensland

📍 Rosewood Showgrounds

📅 Saturday 15 October

Interact with local environment groups at this massive annual event focusing on fantastic native plants.

Free entry, but bring your own boxes and bags for all your plant purchases!



GARDENING WITH NATIVE PLANTS

Join Chuwar's Mountain Man to learn about using native plants in your garden.

📅 Saturday 22 October

📍 Rosewood Library and
Springfield Central Library

Registrations essential
[lpswichlibraries.com.au/whats-on](https://www.lpswichlibraries.com.au/whats-on)

Presented by Ipswich Libraries



CREATING AN ACTIVE CITY



How we move around the city influences the level of congestion on our roads, air quality and carbon emissions.

Walking, cycling and human-powered active transport modes provide many benefits for the health of both our community and the city.

By choosing an active transport option you can:

- enjoy incidental exercise
- be more engaged with your neighbourhood and urban environment
- help reduce traffic congestion and parking demands
- help reduce carbon and air pollutant emissions

People are more likely to choose to walk or cycle or use active transport if the conditions are convenient, safe and pleasant, with direct routes that minimise travel time.

Council invests in improvements to active transport networks, such as footpaths and bike path connection, so that active transport can be an easy choice.



PEDAL POWER FOR THE WIN



**More than 50 per cent of car trips are less than 5km.
Give the planet – and yourself- a boost and walk or ride instead!**

The most common forms of active transport are walking and cycling, but it includes all forms of human-powered movement from wheelchairs to skateboards.

RIDER CONFIDENCE WORKSHOPS

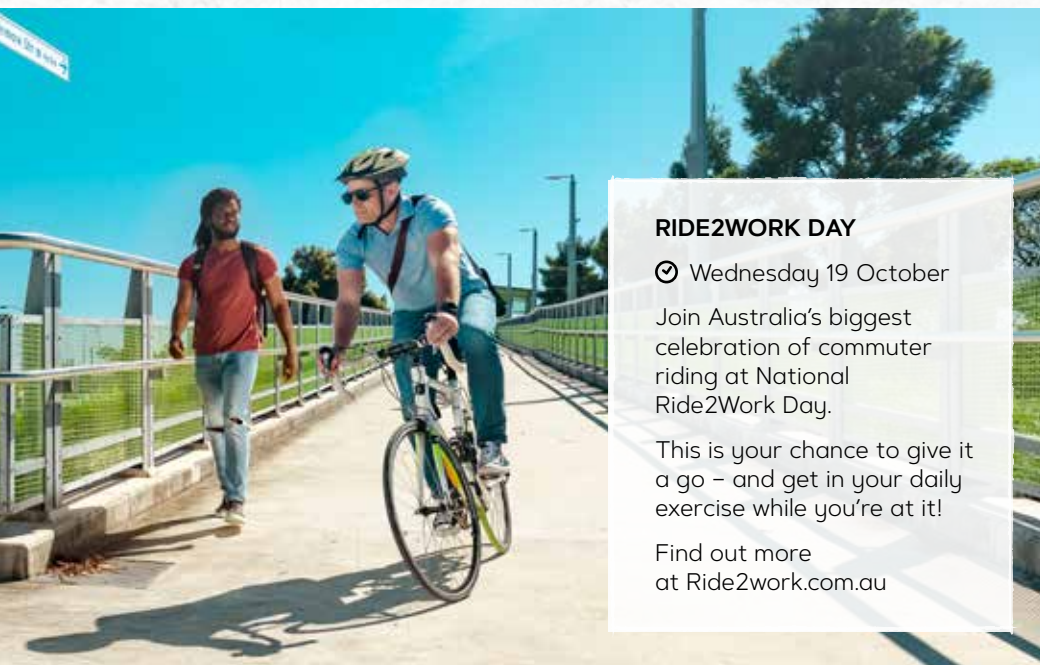
📍 Ipswich Cycle Park, Raceview 🗓 Thursday 20 October

This workshop is perfect for anyone looking to dust off their bicycle and gain confidence in riding. Covering all basics this course will assist in enhancing those skills to make participants confident on bike paths and bikeways. Bring your own bikes, helmet, water bottle and snacks.

*participants under the age of 16 must be accompanied by an adult.

Registrations are required as numbers are limited. Find details on the Active Healthy calendar

ipswich.qld.gov.au/activehealthy



RIDE2WORK DAY

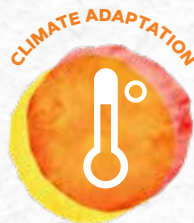
🗓 Wednesday 19 October

Join Australia's biggest celebration of commuter riding at National Ride2Work Day.

This is your chance to give it a go – and get in your daily exercise while you're at it!

Find out more at Ride2work.com.au

A VISION FOR OUR FUTURE CLIMATE



Ipswich will be impacted by a changing climate and we need to be ready and resilient.

Modelling shows that over time, the Ipswich region will continue to be exposed to:

- higher average temperatures across all seasons
- more hot days and extreme heat waves
- increased intensity of extreme rainfall events
- longer periods of drought and more frequent floods
- a harsher fire-weather climate.

These changes are already causing challenges to areas such as environmental health, public health and wellbeing, and disaster management.

Heat stress is a particular danger to socially vulnerable communities, including the elderly, very young, people with chronic illnesses and the homeless.

URBAN HEAT ISLAND EFFECT – VIRTUAL REALITY SIMULATION

This interactive session will explore how our city and suburbs are impacted by urban heat island effect.

It's an issue caused by urban surfaces absorbing and retaining heat.

With the use of VR goggles you can see how small changes like tree planting can help reduce the impacts of heat on our homes and streets.

Council is proud to partner with Griffith University and Sunshine Coast University on this project.

- 🕒 19 October - Brisbane Street, Ipswich
- 🕒 29 October - Faye Carr Park, Ripley

See [Ipswichcitycouncil.eventbrite.com](https://www.ipswichcitycouncil.eventbrite.com)



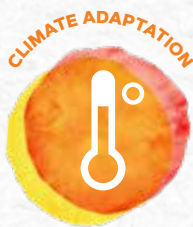
GET READY FOR EXTREME WEATHER

Queensland is the most disaster-impacted state in Australia, with almost 90 disaster events in the past decade.

The recent rain and flood events in February – May 2022 caused damage to hundreds of Ipswich homes and businesses, as well as millions of dollars damage to public infrastructure such as roads and parks.

Climate change is a modern-day challenge that can impact our infrastructure, the way we live and our susceptibility to extreme weather events. Our ability as a city to plan, adapt and respond to a changing climate will ensure that we are prepared to meet this challenge.

A few hours spent working through simple planning tasks with your household, putting aside supplies and securing your home could make a huge difference to the impacts that a disaster or emergency event have on your home and family.



GET READY WEEK

📅 10-16 October 2022

It's time for all Queenslanders to Get Ready for the upcoming severe weather season.

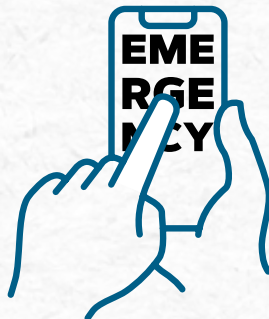
Council's Emergency Management team will be visiting shopping centre and selected library hubs to help the community prepare for severe weather.

They will have lots of resources and tips to make it easy to prepare your home and family.

ONLINE HUB

Council's website ipswich.qld.gov.au/emergency is full of information to help you prepare, respond and recover from severe weather.

From heatwaves to floods, you can feel confident that your family can make an emergency plan and take the steps you need to stay safe.



YOUNG LEADERS SHAPE A SUSTAINABLE FUTURE



Ipswich has incredible young people who are taking action and making a difference in their communities.

The Youth Sustainability Summit is a way to bring students together to hear from each other, and environmental and sustainability experts, on ideas and actions to create a better future for us all.

These students take their passion for sustainability and become leaders in their schools and communities creating grassroots change.



YOUTH SUSTAINABILITY SUMMIT

📅 19 October

Ipswich Civic Centre

The theme for the 6th annual summit is Working Together for a Brighter Future. The full day summit is for primary school students in Grades 4, 5 & 6 and focuses on helping to spark sustainability projects at home and at school.

*pre-registration required. Schools interested in participating in future events can email enviroed@ipswich.qld.gov.au

SUPPORT FOR SCHOOLS

Council provides several learning resources for schools on waste, sustainability and the environment.

Topics include:

- Compost and worm farms
- School recycling
- Waste education
- Waterway health

Find the resources at ipswich.qld.gov.au/enviroed



LENDING A HAND TO ON-GROUND ACTION



We have multiple Bushcare sites where volunteers would love your help to improve the local environment.

The sites are diverse but one thing they all have in common is a strong desire to enhance our city's parks, reserves and waterways. By doing this, Bushcare is strengthening community ownership of our environment.

It's easy to become a Bushcare volunteer! No experience is necessary, and you can do up to three trial days to see if it's for you.

Just go to lpswich.qld.gov.au/volunteering

REGULAR BUSHCARE WORKING BEES

There are lots of opportunities to get involved.

- **Cribb Park, North Ipswich**
Second and fourth Saturday of month, from 2.30 pm
- **Masons Gully, Rosewood**
Second Saturday of month, from 8.00 am
- **Peace Park, Rosewood**
Fourth Sunday of the month, from 8.30 am
- **Opossum Creek, Brookwater**
Check the volunteering portal for details
- **Eugene Street, Bellbird Park**
Last Sunday of month, from 2.00 pm
- **Jim Donald wetlands, Silkstone:**
Every second Saturday, from 4.00 pm
Every Thursday from 4.15 pm



What it takes to be in Bushcare

- No skills needed, learn on site
- Meet new people
- Do up to 3 trial days
- See the rewards of your work

POWER OF PARTICIPATION

Be a part of something big when you join a Citizen Science project – and encourage others to join in as well.

Citizen science is a hands-on approach to engaging people to gather data, ask questions and seek evidence for decisions.

By joining a citizen science project you are helping to better understand our world and sharing knowledge with others.



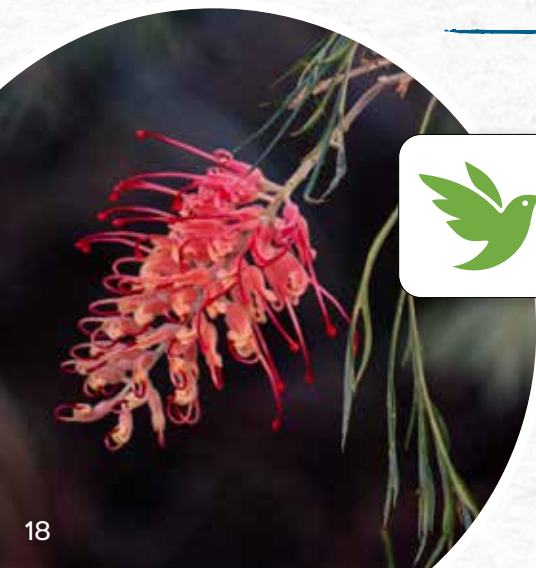
AUSSIE BACKYARD BIRD COUNT

📅 17-23 October

Taking part in the Aussie Backyard Bird Count is easy! Just spend 20 minutes in your favourite outdoor space and tell us about the birds you see during that period.

The data collected assists BirdLife Australia in understanding more about the birds that live where people live.

You can submit your results using the app or the web form at Aussiebirdcount.org.au



GREAT SOUTHERN BIOBLITZ WITH SPRINGFIELD LAKES NATURE CARE

📅 28-31 October

Join an international period of intense biological surveying. The event attempts to record all living species within designated areas across the southern hemisphere.

Join the Ipswich survey by downloading citizen science app iNaturalist.

see Inaturalist.org

RIPLEY IS BUZZING WITH SUSTAINABILITY



Ripley Town Centre's commitment to sustainability has grown with 360,000 tiny new residents.

The retail development is hosting six new colonies of honeybees in collaboration with Bee One Third, with about 200kg of honey estimated to be produced each year.

The bees will also support education on the vital role these pollinators play in our food system and wellbeing.

The bees will be buzzing around Stage One of Ripley Town Centre, which is already recognised for its sustainability measures and has a 5 Star rating for Green Star Design.

This includes car park solar panels, energy and water consumption monitoring, water sensitive urban design to manage stormwater, energy efficient glazing, shading and insulation.

Ripley Town Centre has been designed with a 20-minute neighbourhood philosophy to encourage a low-carbon community.

BEES WAX CLOTH WRAPS WORKSHOP

- 📍 Ripley Town Centre
- 📅 Saturday 22 October

Craft your own natural bees wax cloth wraps for sustainable food storage and learn how to care for your wraps.

Take home new skills and your creation. Learn more about the importance of bees to our environment and local ecosystems.

For details see
ripleytowncentre.com.au/events





Ipswich City Council
PO Box 191, Ipswich QLD 4305, Australia

Phone (07) 3810 6666
council@ipswich.qld.gov.au
ipswich.qld.gov.au/sustainability

Join us online:



[/IpswichCityCouncil](https://www.facebook.com/IpswichCityCouncil)



[/ipswich-city-council](https://www.linkedin.com/company/ipswich-city-council)



[/IpswichCityCouncilTV](https://www.youtube.com/IpswichCityCouncilTV)

*Recycle me
when you're done!*

Put me in your yellow lid recycling bin
or rip me up and put me in your compost.

