

Significant Plants and Animals

White Rock-Spring Mountain Conservation Estate provides habitat for a diverse range of native flora and fauna.



COLEUS HABROPHYLLUS

It's important to stay on the tracks – otherwise you may trample on a rare herb found in this estate.

Why is it protected?

Coleus habrophyllus is listed as endangered under federal environmental legislation.

It is found in only six locations in South-East Queensland between Ipswich and Ormeau.

The herb is under threat due to bushfires and competition from introduced weeds such as lantana that also contribute to the frequency and intensity of bushfires.

Interesting facts

Coleus habrophyllus is a small woody herb growing to 40cm tall.

It has scented foliage and purple flowers that bloom through the year.

It's found on rocky outcrops of sandstone or chert, growing in shaded positions in eucalypt woodland, often close to vine forest.



POWERFUL OWL *Ninox strenua*

Australia's largest owl with a wingspan of up to 140cm. They need old growth trees and hollows to nest.



SHORT-BEAKED ECHIDNA *Tachyglossus aculeatus*

This monotreme, or egg-laying mammal, is common across much of Australia. They eat ants and termites using their long sticky tongue.



BLUE GUM *Eucalyptus tereticornis*

One of the most important koala food trees, and is a habitat for some possum species. Grows to 20-40m high.

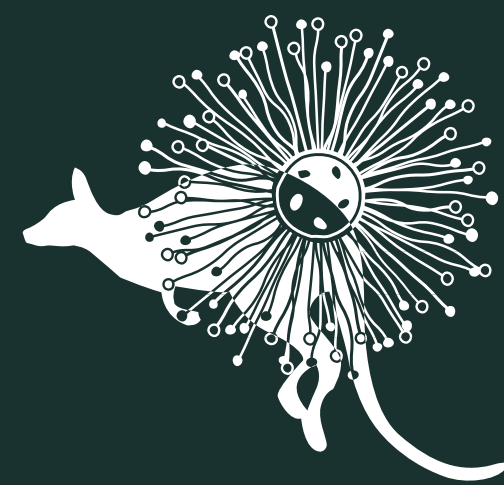


GLOSSY-BLACK COCKATOO *Calyptorhynchus lathami*

This endangered cockatoo feeds almost exclusively on Allocasuarina seeds. It requires tree hollows for breeding.

IPSWICH EMBLEMS

Two local species have been chosen as the flora and fauna emblems of the City of Ipswich.



FAUNAL EMBLEM

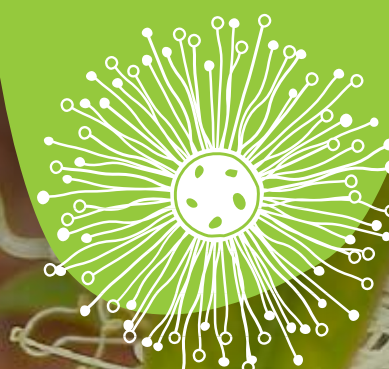


BRUSH-TAILED ROCK WALLABY *Petrogale penicillata*

Once widespread in mountain areas of eastern Australia, this species now only occurs in a few scattered populations.

Through Enviroplan, habitats critical to the Brush-tailed Rock Wallaby's survival are preserved at Flinders-Goolman Conservation Estate.

FLORAL EMBLEM



PLUNKETT MALLEE *Eucalyptus curtisii*

This rare tree only has a few small populations remaining in South-East Queensland.

Through Enviroplan, some of the Plunkett Mallee's remaining populations are being protected in the White Rock – Spring Mountain Conservation Estate.