

Project Update

Springfield Parkway and Springfield Greenbank Arterial Duplication Project

December 2023



The upgrade of Springfield Parkway and Springfield Greenbank Arterial in Springfield Central is advancing. As the largest road upgrade in council's history, both roads will be upgraded from two to four lanes to meet increased growth in the region. The project is being completed in three stages with Stage 1 now complete, Stage 3 currently under construction and Stage 2 at early works stage.

STAGE 1

Springfield Parkway – Hymba Yumba Independent School to Centenary Highway, and Springfield Greenbank Arterial – Springfield Parkway to Eden Station Drive

Stage 1 of the Springfield Parkway Springfield Greenbank Arterial is now complete and delivered back to the Springfield community. As the largest road upgrade in Ipswich City Council's history, the completion of Stage 1 is an exciting forward step in addressing traffic congestion in a growing Springfield.



Stage 1 - Springfield Greenbank Arterial Springfield Parkway intersection

To complete Stage 1 over 1000 people were inducted onsite to complete over 200,000 hours of construction activity. The team laid over 800 metres of stormwater pipe, laid over 12,000 tonnes of asphalt and planted over 20,000 plants including native grasses, shrubs and trees. Over 1000 metres of gas, watermain and telecommunication services have also been installed across Stage 1, with increased capacity for future growth of the region.

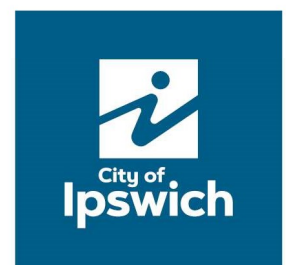
The duplication of the bridge over Opossum Creek required twelve bridge foundation piles and nineteen bridge deep deck units to carry the volume of traffic that travels the Springfield Greenbank Arterial route everyday.

First Stage of Council's Largest Road Upgrade complete

The completion of Stage 1 provided an opportunity for the infrastructures biggest supporters to come together and acknowledge this major project milestone. The expansion of Springfield Parkway and Springfield Greenbank Arterial is vitally important to improving safety and make travel easier for the ever growing Springfield community. Council has worked with the Department of Transport and Main Roads to integrate multiple road upgrade projects at once, fast-tracking improvements to connect communities. To learn more, view the Ipswich City Council Transport Plan here - [iGO City of Ipswich Transport Plan : Ipswich City Council](#)



Division 2 Councillors Paul Tully and Nicole Jonic, Member for Jordan Charis Mullen MP and Ipswich Mayor Teresa Harding celebrate the completion of the new signalised intersection, Springfield.



STAGE 2

Springfield Parkway from Topaz Road to just north of the Hymba Yumba Independent School

Survey works are now complete with early works to commence on Springfield Parkway just north of Hymba Yumba Independent School. Early works will involve minor earthworks to construct a large culvert to channel water into Opossum Creek. Work will continue into early next year from Monday 8 January 2024.



Stage 2 – Springfield Parkway Duplication

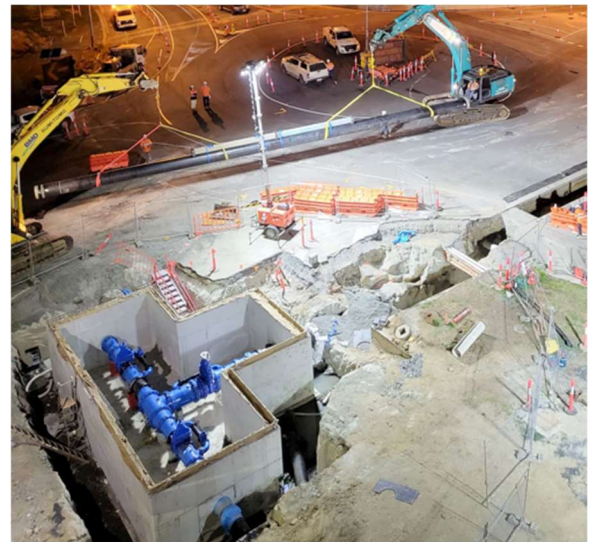
Key features of Stage 2 include:

- Springfield Parkway will be widened for the length of this section to include a total of four lanes
- The roundabout at Springfield Parkway/Topaz Road/Woodcrest Way will be upgraded to a signalised intersection
- Road widening, pavement works and new line marking on the Springfield College Drive and Bridgewater Road approaches to the roundabout on Springfield Parkway will be undertaken to allow for two lanes of traffic
- On road cycle lanes of 2m width will be constructed along the road corridor in both directions
- A 3m wide shared pathway for pedestrians and cyclists will be constructed.

STAGE 3

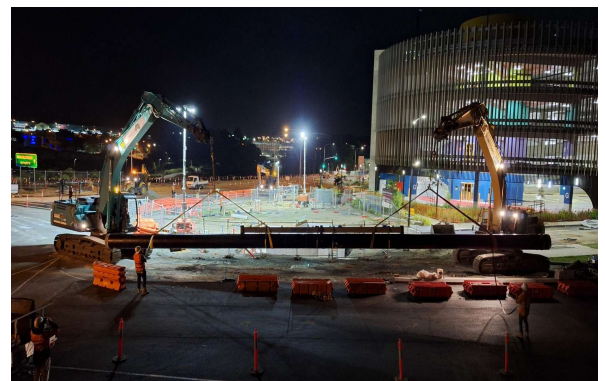
Springfield Greenbank Arterial from Eden Station Drive to Sinnathamby Boulevard

A significant amount of work has been occurring underground in Stage 3 installing, upgrading and future proofing stormwater drainage, gas, electrical, telecommunication networks and a major Urban Utilities watermain and pit that provides potable water to the residents and businesses of Springfield. The main gas line has been upgraded and relocated, followed by the telecommunications network. Future proofing the network ensures more cables can be utilised in ground as the community and increased demand grows.



Stage 3 – Watermain pit, Exit 32 Springfield

Work on the watermain and construction of a 10m x 8m x 4m deep valve pit is progressing with the lid to be placed on the pit in the new year by crane. New pipes are being connected to the pit which is one of the largest in Springfield.



Stage 3 – Watermain pipe work Centenary Motorway Exit 32 off ramp

Centenary Motorway Exit 32 off ramp

As part of Stage 3 works, Council is working with the Department of Transport and Main Roads to upgrade the Centenary Motorway Exit 32 off ramp and Springfield Greenbank Arterial intersection. The ramp will be widened to four lanes and tie into the Main Street intersection, with intersection works due for completion in late 2024. The team have been working since August to complete extensive inground service upgrades, earthworks and stormwater drainage and as we near Christmas we are looking forward to the opening of the off ramp to live traffic. The opening provides three lanes of traffic with one lane providing access to the Springfield Park'n'Ride. Further closures will be required to finalise the work and increase to the final four lane configuration. To learn more about the project follow the link - [Centenary Motorway \(Yamanto – Ellen Grove\) and Springfield Greenbank Arterial exit ramp, upgrade intersection | Department of Transport and Main Roads \(tmr.qld.gov.au\)](#)



Centenary Motorway Exit 32 off ramp

Christmas New Year Shutdown break

From the week of 18 December 2023, you will start to see the team tidying and packing up equipment to make Springfield work areas safe and secure over the Christmas New Year shutdown period. There will be no construction activity during the Christmas New Year break. The team will be returning to work from Monday 8 January 2024 and we hope you enjoy the holiday season.



Congratulations to the Brisbane Lions



Congratulations to the Brisbane Lions women's team for winning this year's grand final. Our team were elated to see the Lions achieve such success and come together in the last quarter to secure their second win.

Our team have been working in with the Lions to ensure our construction program did not impact the painting of the Brisbane Lions murals of past and present players outside the stadium. We have marvelled at the artists' work and enjoyed seeing the creations come to life. No doubt after their latest win there will be more players to celebrate.



Thank You

The project team appreciates your patience and understanding as we construct this major infrastructure project in Springfield. We hope you enjoy the holiday season.

Contact Us

To find out more about the project, you can contact us or by visiting the dedicated project webpage via QR link below:

PHONE – 07 3810 6666 (8am-4:30pm)

@ capitalprojects@ipswich.qld.gov.au