

A woman with long dark hair, wearing a green cowl-neck sweater, is sitting at a grey metal table outdoors. She is smiling and looking towards the camera. On the table in front of her is a silver thermos, a pink cup, and a silver mug. To her left, a person wearing a blue and red plaid shirt is partially visible, sitting at the same table. The background shows a grassy area with some trees and a clear blue sky. The overall scene is bright and sunny, suggesting a pleasant day outdoors.

**2024**

# IPSWICH IN AUTUMN

Your guide for entertainment,  
events and activities



# ANZAC DAY

*Lest we forget*

**Thursday 25 April**

Mark ANZAC Day by attending  
a service or commemoration  
across the City of Ipswich.

For more information visit  
[ipswich.qld.gov.au/anzacday](http://ipswich.qld.gov.au/anzacday)



# Message from Chief Executive Officer, Sonia Cooper



Welcome to the Autumn Guide for beautiful Ipswich, a city of opportunity for all.

Mother Nature has thankfully dialled down the temperature gauge a notch or two as we move into autumn in Ipswich.

The weather is always a little kinder as we approach the middle of the year and can enjoy the outdoors again.

There are many wonderful opportunities and so much to do with plenty of outdoor (and indoor) events and activities scheduled for this period.

ANZAC Day falls on a Thursday, 25 April, commemorating the Australian and New Zealand soldiers, who on 25 April 1915 formed part of the expedition that set out to capture the Gallipoli peninsula.

Services will be held at cenotaphs and in local communities, and I encourage all to attend and acknowledge our heroes who served to protect our country.

If you are looking for an adrenaline-charged weekend, then our popular and

much-loved Planes, Trains and Autos festival will be back from 4-6 May.

Ground displays, aerial flypasts and historical exhibits will all be on show at the Queensland Museum Rail Workshops at North Ipswich as part of the festival's Fully Charged event on the Saturday.

The Ipswich Civic Centre is always offering a terrific range of entertainment and autumn has several shows sure to generate lots of laughter.

The Stitch in the 'swich April Fools funfest, brought to you by The Sit Down Comedy Club, will be held on Friday 19 April.

On Thursday 9 May, the Melbourne International Comedy Festival Roadshow is coming to our city with comics galore.

The Ipswich Art Gallery and Ipswich Libraries are just a short distance away from our civic centre and well worth a look in at the same time.

We look forward to seeing you for autumn in Ipswich 2024.

Front Cover Image: Hardings Paddock, Flinders-Goolman Conservation Estate.

If you have any feedback regarding the Autumn Guide, please email [council@ipswich.qld.gov.au](mailto:council@ipswich.qld.gov.au) or visit [ipswich.qld.gov.au](http://ipswich.qld.gov.au)

Disclaimer: Published by Ipswich City Council © 2024

At time of printing all information is current and correct. Every care has been taken to ensure the information in this brochure is correct at the time of publication. Ipswich City Council accepts no responsibility for any errors, omissions or changes leading to such information being incorrect.

As activities, programs and events may cancel or move subsequent to publication of this brochure, no responsibility is accepted for accuracy of content.

This publication is copyright. Other than for the purposes of and subject to the conditions prescribed under the *Copyright Act 1968* (C'with), no part of it may in any form or by any means (electronic, mechanical, micro copying, photocopying, recording or otherwise) be reproduced, stored in a retrieval system or transmitted without prior written permissions. If you wish to disseminate or share this information and or images please contact Ipswich City Council for permission.



2024 Ipswich Australia Day Award winners from left, Riverview Neighbourhood Watch, Fay Ison, Amanda Draheim, Jenny Stubbs, David Reid and Louie Galman.



## COMMUNITY CHAMPIONS RECOGNISED

Six remarkable recipients were announced as winners in the 2024 Ipswich Australia Day Awards earlier this year, with Riverview resident Amanda Draheim named the 2024 Ipswich Citizen of the Year.

Mrs Draheim, and other award finalists and winners, were honoured for their dedication and service to the community.

Whether helping others for decades, or just starting out in their journey of service, each of the finalists are a shining example of the kind of community Ipswich aspires to be.

There were 21 finalists in this year's awards with 35 nominations across six categories.

The winners of this year's awards were:

- **Citizen of the Year:**  
Amanda Draheim
- **Senior Citizen of the Year:**  
Fay Ison
- **Young Citizen of the Year:**  
Louie Galman
- **Cultural Award:** Jenny Stubbs
- **Sport and Recreation Award:**  
David Reid
- **Community Group of the Year Award:**  
Riverview Neighbourhood Watch.



Read more about the winners at [ipswichfirst.com.au](https://ipswichfirst.com.au)

# ARTICULATE

THE OTHER SIDE OF CREATIVE INDUSTRIES

Workshops designed to upskill local Ipswich artists and strengthen their entrepreneurial and business know-how.

**MUSIC INDUSTRY DEVELOPMENT - 8 APRIL**

**FULL APPLICATIONS RADF - 20 APRIL**

**STRATEGIC PLANNING DAY - 11 MAY**

**EVENT PLANNING - 8 JUNE**

**GOAL SETTING - 13 JUNE**

**SELLING YOUR ARTWORK - 22 JUNE**



Visit [Creatorsofipswich.com.au](https://creatorsofipswich.com.au)  
for bookings and to follow us  
for program updates.



Explore Ipswich this

# Autumn

Autumn activities you need to book now, school holiday ideas and perfect presents for Mother's Day.

## Olive Festival and Mother's Day picnic

Explore the picturesque Watercress Creek Olives and Limes farm at the annual Olive Festival on Sunday 14 April. The festival will feature taste testing, market stalls and music. You can also take a tour of the grove featuring more than 1,000 olive trees and 800 Tahitian lime trees, and enjoy a picnic pack under the shade of the trees. On Sunday 5 May you can bring mum for a special Mother's Day picnic. Simply choose from a picnic, grazing or ploughman's lunch platter and enjoy your tasty meal surrounded by olive and lime trees.



## Furry friends accepted

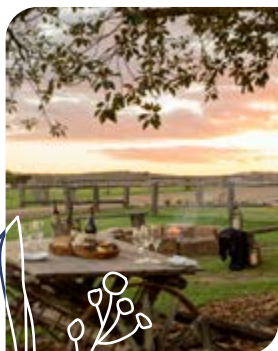
Did you know you can bring your pups to a range of venues in Ipswich? And with the weather starting to cool off, sitting in the fresh air with man's best friend sounds very appealing. How about breakfast at Rafter & Rose, an afternoon tasting at Imbibis Craft Distillery (pictured left) or dinner at Pumpyard Bar and Brewery – all with your fur baby in tow!

SCAN QR  
CODES TO  
FIND OUT  
MORE



### Easter school holiday activities

If you will be in town during the April school holidays or the Easter long weekend, there are some great activities you should pencil in. Visit Queensland's largest herd of llamas at The Llama Farm (pictured above), enjoy the children's exhibition space at Ipswich Art Gallery, pet and feed farm animals at EWE Nique Hobby Farm or visit Queensland Museum Rail Workshops.



### Mother's Day ideas...

With Mother's Day coming up (12 May), you might want to book mum in for some fun! Take mum on an adventure with Floating Images Hot Air Balloon Flights, spend the day exploring boutiques like Embers & Twine (pictured right) in the Top of Town precinct, or indulge in an award-winning meal at Spicers Hidden Vale (pictured left). Whatever mum's taste, we'll have the perfect present.



### Challenge accepted!

Have you ever hiked to the top of Flinders Peak, tackled the trails at Hidden Vale Adventure Park or explored the mining remnants at Castle Hill Blackstone Reserve (pictured left)? If not, now's the best time. As the days start to cool off in Ipswich, it's the perfect time to explore hiking trails with over 6,700ha of conservation estates on offer.

For more ideas visit  
[Discoveripswich.com.au](http://Discoveripswich.com.au)

discover  
**Ipswich**



# WANT TO BE ACTIVE AND HEALTHY IN IPSWICH? THERE'S AN APP FOR THAT!

Ipswich City Council's popular Active and Healthy program now has an app to keep residents up to date with the latest activities, outdoor recreation and healthy eating workshops on offer throughout the city.

The app had a soft launch in November as council continued to add new content, but it is now ready to showcase the full range of activities on offer.

The Active and Healthy program supports and encourages the Ipswich community to become more active, and develop connections through a range of free and low-cost group sports, recreation and wellness activities.

In the 2022-2023 financial year, the Active and Healthy program saw participation grow to 18,554 over a total of 1,112 activities, events and workshops, which is incredible.

From the app, you can view timetables and book into any of council's free Active and Healthy activities.

Visit the Active and Healthy page on council's website to sign up. Once signed up, you will automatically receive an invitation to download the app and from there it is a simple process of following the prompts.



For more information and to sign up, visit [ipswich.qld.gov.au/activehealthy](https://ipswich.qld.gov.au/activehealthy)





# ACTIVE KIDS

Charge into a **FREE** activity these school holidays.

With Active Kids you can help your children experience the great outdoors! Take a bushwalk, score a goal or perfect their clown skills. This Easter break, adventure is right around the corner!



**BOOK  
NOW**



[ipswich.qld.gov.au/activekids](http://ipswich.qld.gov.au/activekids)

# School Holiday Fun

AUTUMN

## IPSWICH LIBRARIES

Join in the fun at Ipswich Libraries these school holidays!

Check out the incredible range of FREE programs and events on offer – there's something for every age.

- Puppet Avatar Drop-in Workshops
- Proudfoot and Friends Live at the Library
- Presentations
- Eye Spy: Funky Fruit Library Search
- Borrow-a-Bot and other drop-in activities.

Bookings now open.

Visit [Ipswichlibraries.com.au](http://Ipswichlibraries.com.au) for more information.



## IPSWICH ART GALLERY

Explore shape, colour and medium in this hands-on journey into the captivating world of patterns in the Children's Gallery with our Pattern Play exhibition.

Open until 14 April.

Visit [Ipswichartgallery.qld.gov.au](http://Ipswichartgallery.qld.gov.au) for more information.





## NICHOLAS STREET PRECINCT

We are putting out the call for children to join our Science Squad these school holidays! Indulge their curiosity and observe the fire and ice shows, featuring clouds, coloured fire and so much more. Get hands-on and experiment with one of the three engaging science workshops; select from snow, lava lamps or slime, each of which can be taken home as a delightful souvenir.

**Monday 8 to Friday 12 April**  
**10.00 am – 2.00 pm daily**

Three hours of free parking  
 Tulmur Place, Nicholas Street Precinct  
 For more details,  
 visit [Nicholasst.com.au](http://Nicholasst.com.au)



## IPSWICH CIVIC CENTRE

Take a wild ride with your host, multi-award winning entertainer, scientist and teacher Richard Scholes (B.Sc., B.Ed), through the 'Magical World of Crazy Science'. Magical World of Crazy Science is a unique show that incorporates science, magic, comedy, mime and music. Chemistry and Physics dominate the show as the audience witnesses giant columns of elephant toothpaste, toilet paper flying high, smoke rings zooming, the incredible magic of polymers and gigantic bubbles which have to be seen to be believed. Add to this the hilarious mix of world-class interactive magic from an award-winning magician, cool music and sound effects from the DJ, and you have one of the world's most engaging science shows!

**Sunday 7 April 2.00 pm**

For more details, visit  
[Ipswichciviccentre.com.au/whats-on](http://Ipswichciviccentre.com.au/whats-on)



## CONVERSATIONS



### **Conversations: Recent Acquisitions from the Ipswich Art Gallery Collection**

 **17 February – 14 April**

Featuring some of the recent acquisitions to the Ipswich Art Gallery Collection, speaking to the environment, connection to culture and the hope for a bright future.

Conversations image credit: Elisa Jane Carmichael

Fish Net Cape 2017 | Ghost net and plastic bags, Ipswich Art Gallery Collection, 2023.  
Photographed by Mick Richards. Image courtesy of the artist and Onespace Gallery.

## Intertwined



### **Intertwined**

 **10 February – 14 April**

Embracing two distinct arts practices, Ipswich-based artists Donna Davis and Sean Williams investigate the natural environment as inspiration for this range of new work.

Intertwined image credit: Sean Williams + Donna Davis

Intertwined 2023 | Found objects, laser cut brushed aluminium, steel, projection.  
Image courtesy of the artists.



# SHAPE YOUR IPSWWICH

## COMMUNITY PANEL

**You say, we listen,  
together we act!**

We are looking for people like you to share your experiences and ideas to help build an Ipswich that we all want to live in.

Join the community panel today.

► [Shapeyouripswich.com.au/communitypanel](https://Shapeyouripswich.com.au/communitypanel)



City of  
Ipswich

# Discover your city!

From delicious food to family fun, and outdoor adventures to bucket list experiences, you'll find it inside our new 2024 visitor guide.

Order or download your **FREE** copy today from **Discoveripswich.com.au/magazine**

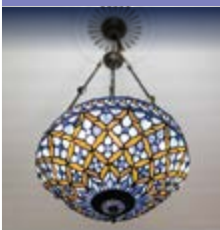


**OUT  
NOW**

FLAVOURS



HERITAGE



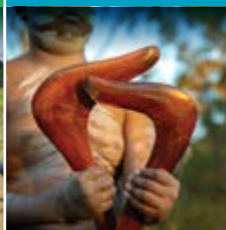
ADVENTURE

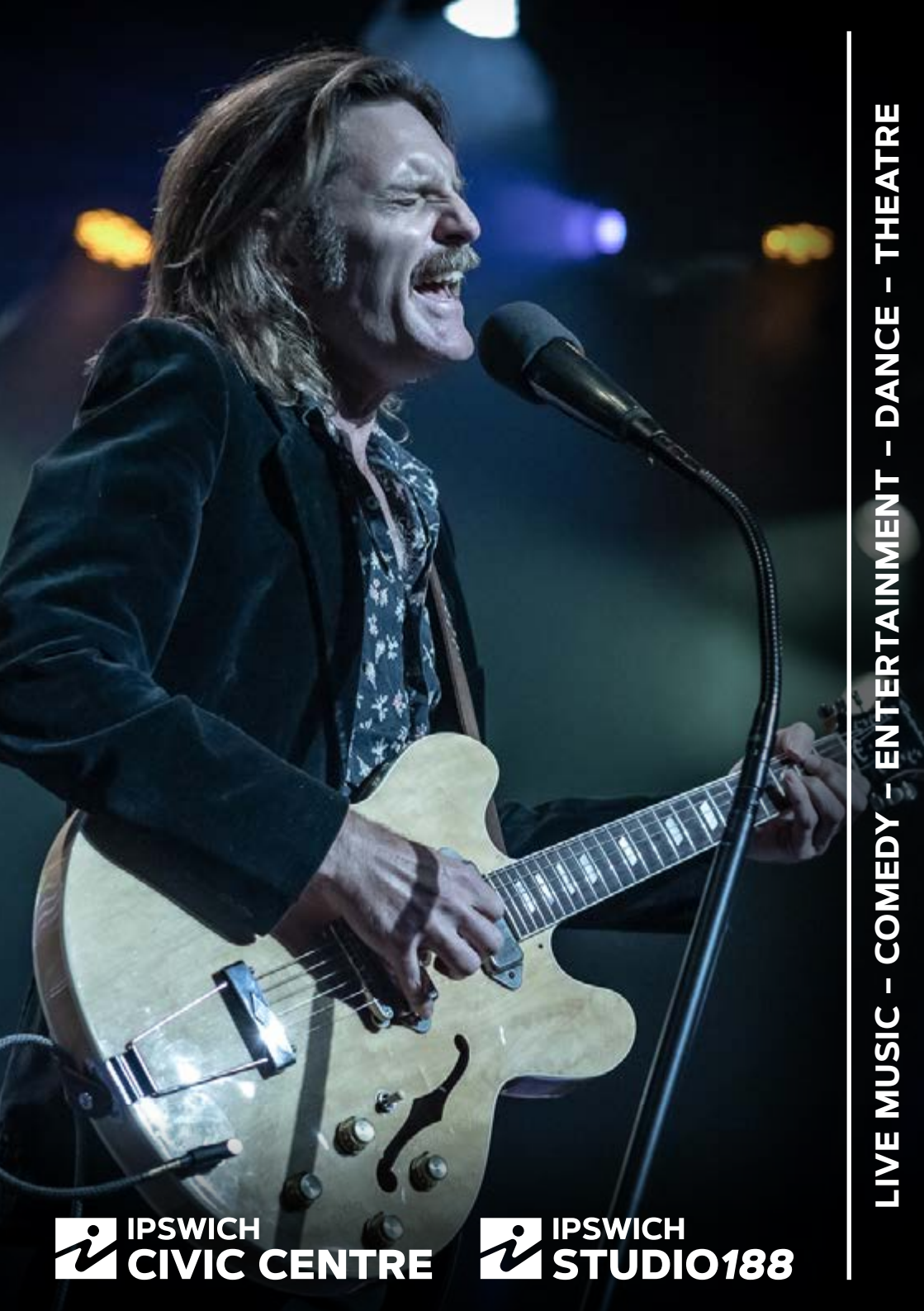


COUNTRY



CULTURE





# PROGRAM

## MARCH

Saturday 16 March	Karise Eden	Ipswich Civic Centre
Friday 22 March	The Joe Cocker Experience	Ipswich Civic Centre
Friday 22 March	Stitch in the 'swich	Ipswich Civic Centre
Saturday 23 March	Arj Barker – The Mind Field	Ipswich Civic Centre
Saturday 23 March	MusiQue – Sequel Gruve	Studio 188

## APRIL

Wed 3 – Thurs 4 April	The Big One–Oh! Jr	Ipswich Civic Centre
Saturday 6 April	The World of Musicals in Concert	Ipswich Civic Centre
Saturday 6 April	Slingshot Social Club - East Coast Take Over Tour '24	Studio 188
Sunday 7 April	Magical World of Crazy Science	Ipswich Civic Centre
Saturday 13 April	Mark Wilkinson	Studio 188
Sunday 14 April	Courtenay Cleary and Alex Raineri in Recital	Ipswich Civic Centre
Friday 19 April	Stitch in the 'swich	Ipswich Civic Centre
Sunday 21 April	Eric Clapton's Unplugged & Hits	Studio 188
Friday 26 April	Trivia @ Studio 188	Studio 188
Saturday 27 April	MusiQue	Studio 188
Tuesday 30 April	Anh Do – The Happiest Refugee Live!	Ipswich Civic Centre

## MAY

Thursday 9 May	Melbourne International Comedy Festival Roadshow	Ipswich Civic Centre
Friday 10 May	The Tap Pack	Ipswich Civic Centre
Saturday 11 May	Ian Moss Rivers Run Dry Acoustic Tour 2024	Ipswich Civic Centre
Sunday 12 May	Andrew Veivers Guitarra y Cuarteto with Black Square Quartet	Ipswich Civic Centre
Saturday 18 May	The Honey Sliders Play Harvest	Ipswich Civic Centre
Saturday 25 May	Stitch in the 'swich	Ipswich Civic Centre
Saturday 25 May	MusiQue	Studio 188
Fri 31 May – Sat 1 June	Head Over Heels	Ipswich Civic Centre



# Karise Eden

A Musical Decade of Power,  
Passion and Perseverance

At 19, Karise Eden burst into stardom with a viral audition video, now boasting 50 million views on YouTube. With two ARIA Awards, gold and platinum records, she stands as one of Australia's most distinctive voices, often compared to Adele and Amy Winehouse.

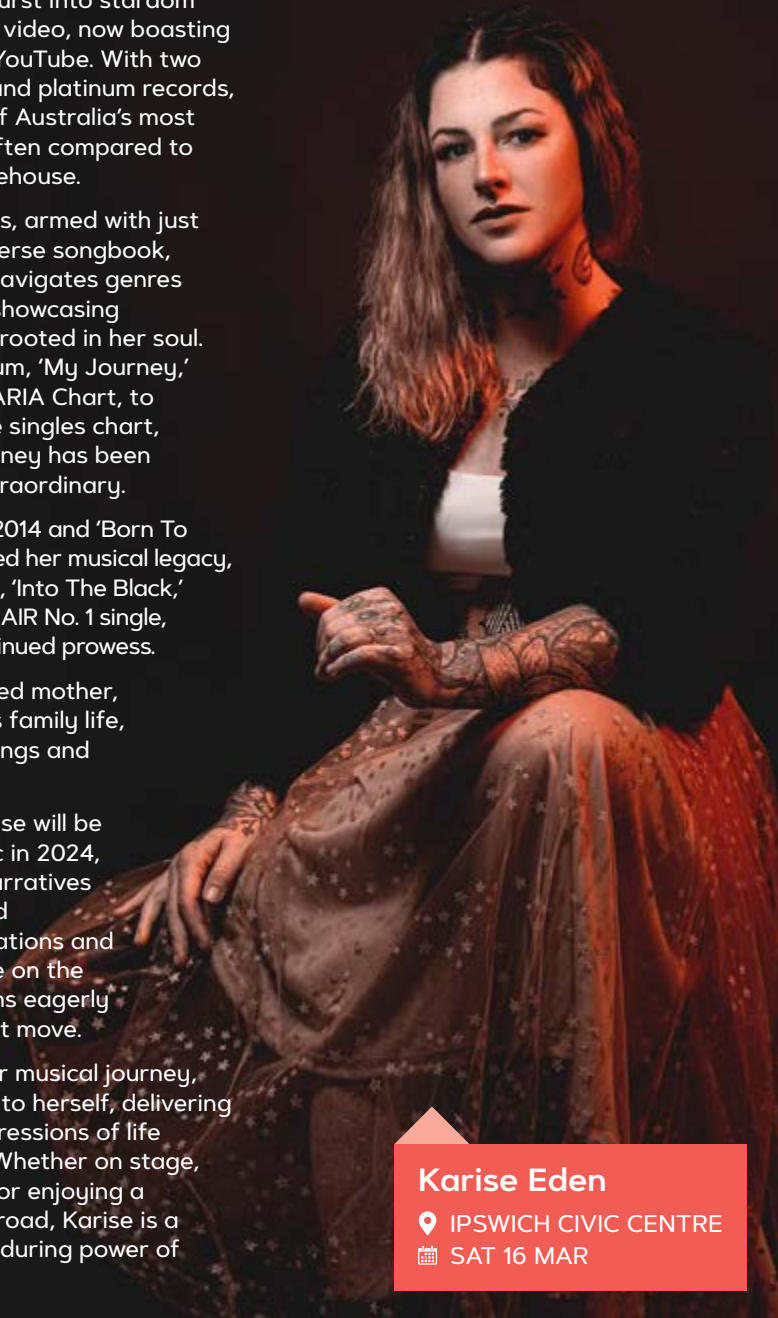
In solo performances, armed with just her guitar and a diverse songbook, Karise effortlessly navigates genres from blues to soul, showcasing authenticity deeply rooted in her soul. From her debut album, 'My Journey,' reaching #1 on the ARIA Chart, to historic feats on the singles chart, Karise's musical journey has been nothing short of extraordinary.

'Things I've Done' in 2014 and 'Born To Fight' in 2018 solidified her musical legacy, and her indie release, 'Into The Black,' in 2022, featured an AIR No. 1 single, highlighting her continued prowess.

Karise, now a devoted mother, seamlessly balances family life, home studio recordings and live performances.

Looking ahead, Karise will be launching new music in 2024, promising honest narratives wrapped in full-band dramatics. Collaborations and exciting projects are on the horizon, keeping fans eagerly anticipating her next move.

As she continues her musical journey, Karise remains true to herself, delivering raw and honest expressions of life through her music. Whether on stage, engaging with fans or enjoying a 'mum break' on the road, Karise is a testament to the enduring power of genuine artistry.



**Karise Eden**

📍 IPSWICH CIVIC CENTRE  
📅 SAT 16 MAR



**KARISE EDEN**  
SAT 16 MAR

**THE JOE COCKER  
EXPERIENCE**  
FRI 22 MAR



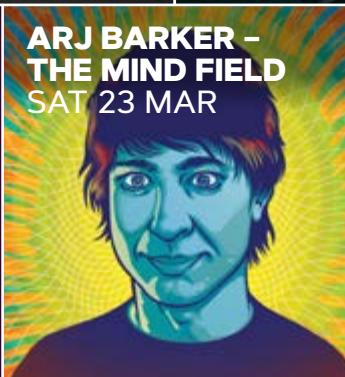
# STITCH IN THE 'SWICH

SUPPORTED BY



**STITCH IN  
THE 'SWICH**  
FRI 22 MAR

**ARJ BARKER –  
THE MIND FIELD**  
SAT 23 MAR



## Sequel Gruve



**MUSIQUE –  
SEQUEL GRUVE**  
@ **STUDIO 188**  
SAT 23 MAR



**THE BIG  
ONE-OH! JR**  
3-4 APR



**THE WORLD OF  
MUSICALS IN  
CONCERT**  
SAT 6 APR



**EAST COAST  
TAKE OVER TOUR**  
@ **STUDIO 188**  
SAT 6 APR

**MAGICAL WORLD  
OF CRAZY  
SCIENCE**  
SUN 7 APR



**MARK WILKINSON**  
@ **STUDIO 188**  
SAT 13 APR



**COURTENAY  
CLEARY AND ALEX  
RAINERI IN RECITAL**  
SUN 14 APR





**STITCH  
IN THE  
'SWICH**

**STITCH  
IN THE  
'SWICH**  
FRI 19 APR

SUPPORTED BY **St Down Comedy**



Eric Clapton's  
**Unplugged & Hits**

**ERIC  
CLAPTON'S  
UNPLUGGED  
& HITS @  
STUDIO 188**  
SUN 21 APR



**TRIVIA  
NIGHT**

**TRIVIA @  
STUDIO 188**  
FRI 26 APR



**MUSIQUE @  
STUDIO 188**  
SAT 27 APR



**ANH DO -  
THE HAPPIEST  
REFUGEE LIVE!**  
TUES 30 APR

**MELBOURNE  
INTERNATIONAL  
COMEDY  
FESTIVAL  
ROADSHOW**



**THURS 9 MAY**



**THE TAP PACK**  
FRI 10 MAY



**IAN MOSS  
RIVERS  
RUN DRY  
ACOUSTIC  
TOUR 2024**  
SAT 11 MAY



**GUIARRA Y  
CUARTETO**  
SUN 12 MAY



**THE HONEY  
SLIDERS PLAY  
HARVEST**  
SAT 18 MAY



# STITCH IN THE 'SWICH

STITCH  
IN THE  
'SWICH  
SAT 25 MAY

SUPPORTED BY



MUSIQUE @  
STUDIO 188  
SAT 25 MAY



THAT PRODUCTION COMPANY & MIRA BALL PRODUCTIONS  
WITH  
IPSWICH CIVIC CENTRE  
PRESENT



HEAD  
OVER  
HEELS  
31 MAY –  
1 JUN

FROM MAY 31  
IPSWICH CIVIC CENTRE

SONGS BY  
THE  
Go-Go's

**BOOK NOW** (07) 3810 6100



[ipswichciviccentre.com.au/whats-on](http://ipswichciviccentre.com.au/whats-on)



IPSWICH  
CIVIC CENTRE



# Resilience in Harmony: Danny Widdicombe and The Honey Sliders

In 2011, the resilient Brisbane-based songwriter and musician, Danny Widdicombe, faced a challenging period. While spending a month in Berlin as the recipient of the Grant McLennan Fellowship from the Queensland Government, Danny experienced persistent lethargy, breathlessness and a yellowing complexion. To his shock, the cause of his deteriorating health turned out to be leukaemia, marking his third encounter with the disease. This time, the prognosis was grim, suggesting he had little time left.

Swiftly returning to the Royal Brisbane and Women's Hospital, Danny miraculously achieved remission within a few months, defying the odds once again. It was during this recovery that he reconnected with old friends, Ben Carstens and Dan Mansfield, forming The Honey Sliders. Following a triumphant performance of Jimi Hendrix's album 'Axis Bold as Love' as a conceptual show, the band decided to stick together. Soon after, Bos Borley joined the lineup as the bassist.

Since then, The Honey Sliders have made a tradition of selecting a favourite album from their collective record collections each year. They immerse themselves in learning every note and intricacy, meticulously replicating the sounds of these masterpieces with great reverence. Joined by Australian rock and roll icons like Bernard Fanning and Ian Haug from Powderfinger, Tim Rogers from You Am I, Troy Cassar-Daley, Jeff Lang and many others during these shows.

Reflecting on their journey, the band expresses a deep love for what they do and a sincere hope to continue making music together for many years to come.

## THE HONEY SLIDERS PLAY HARVEST

📍 IPSWICH CIVIC CENTRE

📅 SAT 18 MAY



# THE WESTSIDE SCRAMBLE

INFORMAL GATHERING OF CREATIVES & COMMUNITY FOLK



## THIRD THURSDAY OF THE MONTH

AT STUDIO 188



**CURIOUS?**

[ipswichciviccentre.com.au](http://ipswichciviccentre.com.au)

**ALL WELCOME**

**IPSWICH  
CIVIC CENTRE**

# VENTURE

A SEASON OF CHALLENGE



## VENTURE into the great outdoors!

With over 6,000ha of open parks and conservation areas, it's no wonder Ipswich is home to so many outdoor recreation and endurance events. Bring the whole family and VENTURE outdoors this year to discover your next adventure.



### HERITAGE KARALEE - IPSWICH100

**Sunday 24 March**  
**UniSQ, Ipswich Campus**

Celebrating its 25<sup>th</sup> year, the Ipswich100 is one of Queensland's favourite charity bike rides.



### GO WEST

**Sunday 24 March**  
**Hardings Paddock, Purga**

This unique trail running event has five well-marked trails from 5km to 30km through forests, towering peaks and rugged valleys.



### SCENIC RIM TRAIL RUNNING SERIES - ROUND 3

**Sunday 14 July**  
**Ivory's Rock, Peak Crossing**

Experience trail running at its finest with four challenging and rewarding courses through beautiful natural bushland.



### IPSWICH HOSPITAL FOUNDATION (IHF) PARK2PARK

**Sunday 28 July**  
**Limestone Park, Ipswich**

The IHF Park2Park fun run is back for its 20<sup>th</sup> anniversary! With a range of challenges to choose from, you'll be helping to raise funds for your local community.

## MORE INFO



To register for an event visit  
[ipswichfestivals.com.au](http://ipswichfestivals.com.au)



# ENVIROPLAN CONTINUES TO DELIVER FOR IPSWICH

Denmark Hill Conservation Reserve

Ipswich City Council's Enviroplan Program is continuing to deliver positive outcomes for residents, with the latest progress report revealing greater focus on landowner conservation support and hazard mitigation.

The Enviroplan Program and Levy Progress Report 2022-2023 detailed how ratepayers' levies benefited the city.

Ipswich was one of the first local governments to introduce a levy focused on protecting and enhancing our natural environment.

Since then, the community and council have worked together to implement the Enviroplan Program and deliver against the newly adopted Natural Environment Strategy 2023, creating a strong partnership.

Spanning more than 6,700ha of conservation land, the Ipswich

Enviroplan portfolio reported a total spend of \$3.9 million in 2022-2023, on the acquisition of conservation land, partnerships, planning and environmental management.

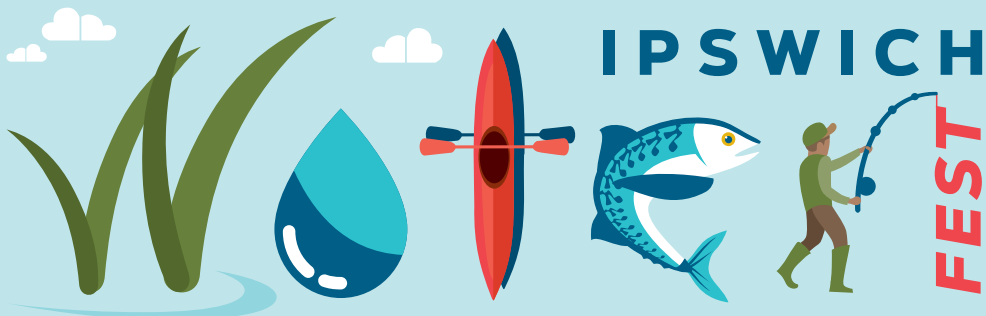
Through the Enviroplan and levy, council has previously successfully restored formerly cleared locations such as the popular Denmark Hill Conservation Reserve and Haig Street Quarry Bushland Reserve.

Council also prioritised landowner conservation partnerships, including holding a landholder support day, to provide education and advice for property owners on how best to care for their natural environment.



**The full Enviroplan Program and Levy Progress Report 2022-2023 is available at [Ipswich.qld.gov.au](https://www.ipswich.qld.gov.au)**





**MARCH – MAY 2024**

Join free and low-cost events and activities celebrating Ipswich's Bremer River, our stretch of the Brisbane River, and the many creeks within our catchments.

Participate in sustainable water-based recreation and take part in initiatives to improve the health of our waterways.



### **CATCH, SNAP AND WIN FISHING COMPETITION**

Hosted by Ipswich City Council and 2 Bent Rods this fun competition will encourage you to find new great fishing spots across Ipswich.

Have a look at the categories, send in a pic of your catch and you could win a prize!

#### **Other highlights include:**

- 🐟 Active and Healthy learn to fish sessions
- 🐟 Creek nature play during school holidays
- 🐟 Family activities at Queens Park Environmental Education Centre
- 🐟 Community planting restoring waterway habitat.



**For more information visit [ipswich.qld.gov.au/waterfest](https://ipswich.qld.gov.au/waterfest)**

# ON-DEMAND LARGE ITEM KERBSIDE COLLECTION

Ipswich residents will have greater access and more flexibility to dispose of unwanted household items with the introduction of an annual on-demand service:

- each household will be eligible for one free collection per year
- households can order a 2 cubic metre bag when it's convenient.

Ipswich City Council and Ipswich Waste Services have partnered with the Handel Group to provide our On-Demand Large Item Kerbside Collection service.



LET'S SORT  
IT OUT. IPSWICH

[ipswich.qld.gov.au/kerbside](https://ipswich.qld.gov.au/kerbside)



# BOOK NOW

To order your free, annual FLEXiSKiP bag and collection visit [Ipswich.qld.gov.au/kerbside](https://ipswich.qld.gov.au/kerbside) or phone the Handel Group on (07) 3130 0412, Monday to Friday between 8.00 am and 5.00 pm.



## 1. Set up your online account

You will be asked for a valid email address and credit/debit card details as part of the application process. Please note that charges will only be applied in the event of a breach of the terms and conditions of use.

## 2. Confirm your booking

Your bag will be delivered direct to your address within 7 business days.

## 3. Fill the bag with your unwanted large items

Make sure you are aware of the acceptable and unacceptable items. You have 21 days from receiving your FLEXiSKiP to fill and book a collection.

## 4. Book a collection

Once you have finished, simply use the link sent via email or your smartphone to scan the QR code on the bag. Then, sit back and celebrate your clutter-free space while we ensure collection within 10 business days. Make sure you do not book your collection until you are completely finished.



## ICONIC EVENTS RECEIVE SUPPORT FROM COUNCIL

Two of Ipswich's iconic and most popular events will receive a combined \$50,000 in financial support from Ipswich City Council this year.

The 151<sup>st</sup> Ipswich Show held from 17-19 May will receive \$30,000 and the Ipswich Cup, run by the Ipswich Turf Club on 22 June, will receive \$20,000.

Council is very proud to support the Ipswich Show. The show is an important and much-loved community event that the whole region looks forward to each year.

An event impact study of the 2021 Ipswich Show highlighted an economic return of \$888,656 with 27,020 individuals attending.

The Ipswich Cup is the showpiece of the Queensland Winter Racing Carnival calendar and part of council's Festival of Horsepower.

Established in 1866, the race is rich in history, heritage and horses, and Queensland's biggest regional race day.

It is more than a horse race; it is the social day of the year for the Ipswich region and beyond.

It attracts about 14,000 racegoers and delivers an economic benefit of \$1.35 million to the city.



Subscribe free to Ipswich First alerts  
at [ipswichfirst.com.au](https://ipswichfirst.com.au)



**IT'S LIVE!**  
*in Queensland*

# PLANES, TRAINS & AUTOS

**SATURDAY 4 – MONDAY 6 MAY 2024**



**PLANESTRAINSAUTOS.COM.AU**

 **IPSWICH  
FESTIVALS**

# WELCOME



It is my pleasure to welcome you to Planes, Trains and Autos which highlights the personality and uniqueness of Ipswich.

Planes, Trains and Autos is supported by the Queensland Government through Round 25 of Tourism and Events Queensland's, Queensland Destination Events Program, which strives to highlight the vital link between the wonderful events we host in our great state and the diverse destinations in which they take place.

Events such as Planes, Trains and Autos foster community pride, impart local culture with all who visit and make meaningful contributions to the local economy.

Beyond Planes, Trains and Autos, there is so much to see, do and experience in Ipswich. I encourage all visitors from far and wide to soak in all the delights of Ipswich and the Brisbane region and make the most of all the experiences unique to this special part of Queensland.

Congratulations to the organisers plus all those involved in working tirelessly to stage such a great event and for being part of the Queensland Destination Events Program.

**The Hon. Michael Healy MP**  
Minister for Tourism and Sport



It's time to get your engine revving in time for the annual 2024 Planes, Trains and Autos festival.

Now in its fourth year, the festival has an excellent track record for showcasing the impressive range of these iconic modes of transport.

Across the long-weekend program you will be sure to find an experience to fuel your fascination with an exciting array of events and activities for the youngest enthusiast right through to the young-at-heart who yearn for the by-gone days of classic cars and steam trains.

Council is proud to be working with festival partners such as the Queensland Museum Rail Workshops, Tourism and Events Queensland, Royal Australian Air Force and Nine News Queensland bringing opportunities to reflect on our rich history with 'head lights' also on our future.

So, if you need a short 'brake' from your normal routine roll up to a Planes, Trains and Autos event this year, you won't regret it.

**Sonia Cooper**  
CEO, Ipswich City Council



Take your weekend *from 0-100*



**There are so many incredible things to see and do in Ipswich. Why not explore your own backyard?**



Scan to find the best accommodation, attractions and food we have to offer!

discover  
**Ipswich** | 

# WEEKEND

## PLANES, TRAINS AND AUTOS PRESENTS FULLY CHARGED

This hallmark event returns with a fresh name whilst still celebrating all things aviation, rail, autos and more! Look to the sky for thrilling aerial displays, while on the ground, buckle up for an adventure where you can rev up your excitement with interactive exhibits, up close experiences and roving entertainment.



Scan to view the  
2023 event recap

### SATURDAY 4 MAY

M	T	W	T	F	S	S
		1	2	3	4	5
6	7	8	9	10	11	12



## QUEENSLAND PIONEER STEAM RAILWAY TRAIN RIDE

Complete your Fully Charged experience by catching a shuttle bus to Ipswich Turf Club where you will experience a journey back in time on a 30-minute heritage diesel hauled train ride. Bookings essential.

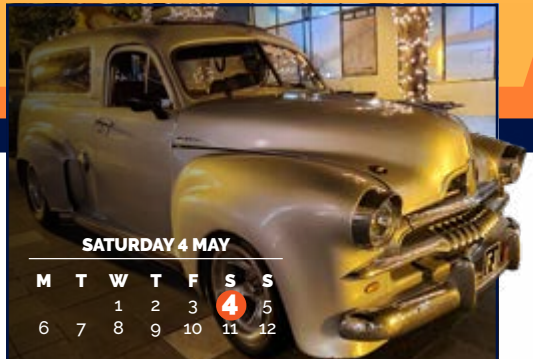
### SATURDAY 4 MAY

M	T	W	T	F	S	S
		1	2	3	4	5
6	7	8	9	10	11	12



### SATURDAY 4 MAY

M	T	W	T	F	S	S
		1	2	3	4	5
6	7	8	9	10	11	12



## PARK AND POSE

Your chance to get up close to an exciting range of classic and muscle cars. There will also be live music and a chance to grab dinner at one of the nearby restaurants or food trucks.



# SNAPSHOT

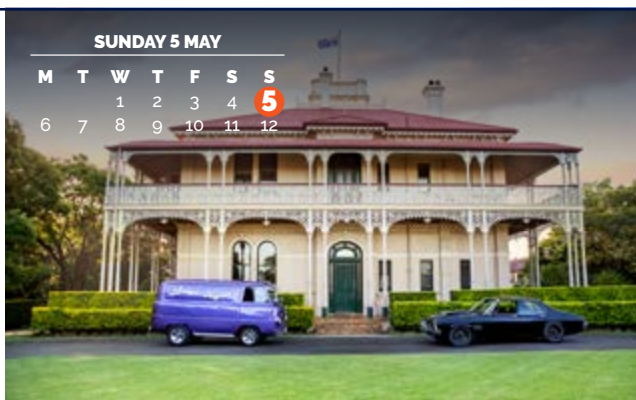


## GRANDCHESTER MODEL LIVE STEAM ASSOCIATION RUNNING DAY

Train enthusiasts young and old will be in their element during this day out in the country, with the hustle and bustle of a real railway station, the locomotives are scaled down versions of actual coal burning steam engines.

## CARS AND COFFEE

Calling all car enthusiasts that love a beautiful destination drive. Join us at the stunning historic venue Woodlands of Marburg mansion for a cars and coffee meet.



## RETRO PICNIC

Queensland Retro Picnic is a social outing combining hot rods, classic and muscle cars, and bikes, celebrating the Kustom Kulture, paired with amazing street food and live music.

PLANES, TRAINS  
AND AUTOS PRESENTS

FULLY

# CHARGED



**SATURDAY  
4 MAY**

9.00 am - 4.00 pm  
Queensland Museum  
Rail Workshops  
North Ipswich



## JOIN US FOR A POWER-PACKED DAY AT QUEENSLAND MUSEUM RAIL WORKSHOPS INCLUDING:

- Thrilling solo and duo aerobatic displays
- Interactive family activities and practical demonstrations
- Access to explore all museum exhibitions and activities
- Self-guided walk-through tour
- Large scale machinery
- Food trucks and roving entertainment.

### Tickets on sale Thursday 21 March 2024

Adults \$6

Children and Concessions \$5

Family Pass: 2 Adults

and 3 Children \$20

Children under 3 and

Museum Members FREE

*Tickets available on the day for an additional cost unless sold out prior.*



### PLAN YOUR JOURNEY

A FREE shuttle bus is available from two park 'n' ride locations to Queensland Museum Rail Workshops and back via a historic bus, approximately every 30 minutes from 8.30 am – 4.30 pm. Visit [Planestrainsautos.com.au](http://Planestrainsautos.com.au) for locations.



### FOR THE KIDS

Kids will be spoilt for choice with The Nippers Railway adventure playground, Sciencentre, interactive displays and activities, plus create your own paper planes and test them in the wind tunnels.



### SENSORY INFORMATION

Elements of Fully Charged will be noisy, have very low light, be bright and may flash. Noise cancelling headphones advised. A Chill Out Zone will be available.

# IN THE AIR

**BE WOWED BY THE WOLF PITTS  
PRO AND ZIVKO EDGE 540 SOLO  
AIRCRAFT DISPLAYS. LOVED ACROSS  
AUSTRALIA, THE SKYACES TEAM WILL  
LEAVE YOU GASPING WITH  
AN ARRAY OF DAZZLING  
FORMATION AEROBATICS IN  
CLOSE PROXIMITY.**





## **EMERGENCY SERVICES VEHICLES**



**GET UP CLOSE  
WITH V8S,  
SUPERCARTS  
AND REMOTE  
CONTROL CARS**



## **GROUND CONTROL**

**SEE VARIOUS RADIO-CONTROLLED MODEL AIRCRAFT  
AND RACING DRONES IN FLIGHT, AND ON DISPLAY.**

**DISCOVER THE FASCINATING WORLD OF AN AIRPORT  
AT THE BRISBANE AIRPORT INFORMATION CENTRE.  
LEARN ABOUT THE PEOPLE, THE HISTORY AND  
THE FUTURE THAT AWAITS!**

# ON THE TRACKS

Get up close and personal with incredible engineering marvels, immerse yourself in multimedia experiences and hear fascinating stories that will ignite your passion for technology and innovation.

## THE SUNSHINE ROUTE EXHIBITION – 100 YEARS OF QUEENSLAND'S NORTH COAST LINE

Learn about Queensland's unique 'railway spine' in the brand-new exhibition.

Taking over 35 years to construct, the line stretches from the south to the north of the state. This one-of-a-kind railway line tells a fascinating and uniquely Queensland story.

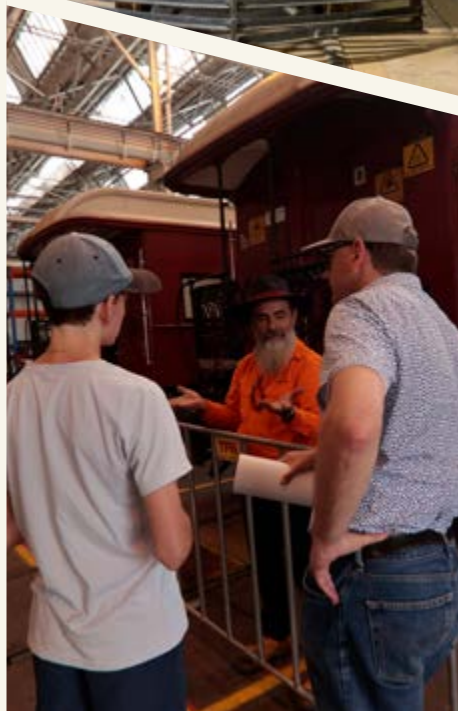
## HISTORIC GROUNDS

Enjoy a stroll around the grounds and get a sense of the hustle and bustle of the Ipswich Railway Workshops when it was one of the largest worksites in Queensland.

More than 15 larger than life exhibitions including the Sciencentre, huge model railway layout and train simulators.

## QUEENSLAND RAIL WALKING TOUR

Take a self-guided walking tour through parts of Queensland Rail's extensive workshops and see how locomotives and carriages are built and maintained.



CURIOCITY, BRISBANE,  
15 - 24 MARCH 2024

# QUEENSLAND IS HOME TO WORLD-CLASS EVENTS

[QUEENSLAND.COM/EVENTS](https://queensland.com/events)

*Queensland*  
AUSTRALIA

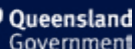


**Planes, Trains and Autos could not  
be delivered without our pit crew.**

MAJOR PARTNERS



EVENT PARTNERS



SUPPORT PARTNERS



MEDIA PARTNER



PROGRAM PARTNERS



[PLANESTRAINSAUTOS.COM.AU](http://PLANESTRAINSAUTOS.COM.AU)



FOLLOW **IPSWICH FESTIVALS**

*Event information is correct at time of printing.*