

Ipswich City Council's Integrated Water Strategy

A Total Water Cycle Framework

Our journey towards a sustainable water future



Emma O'Neill
Coordinator (Integrated Water Management)

20 Years into the Future...





Polluted waterways?



Community asset?



Unprepared?



Resilient?



Water shortages ?



Safe & reliable water supplies?



Expensive, crumbling assets, failing to offer good value to the community?



Well maintained, functional water assets?



Development impacting
our waterways?



Ecologically sustainable
development?



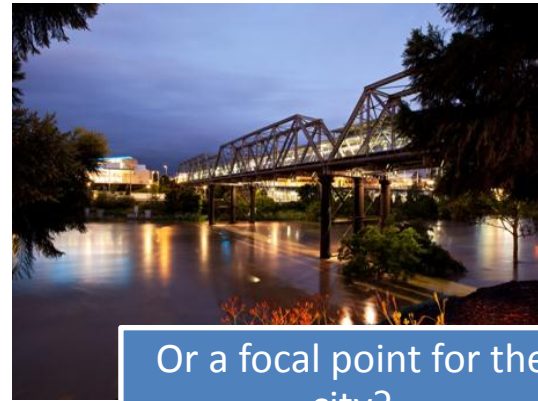
Degraded catchments?



Working together for
catchment restoration?



Is the Bremer River an eyesore?



Or a focal point for the city?



Waterways devoid of any life?

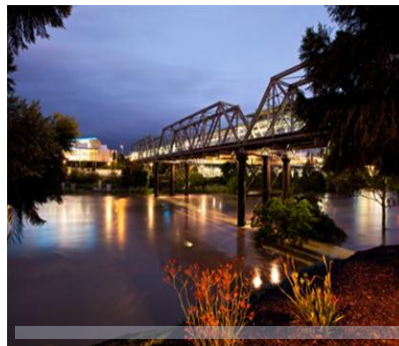


Or do they support thriving biodiversity?



OR....





What is
Council's
Integrated
Water Strategy?

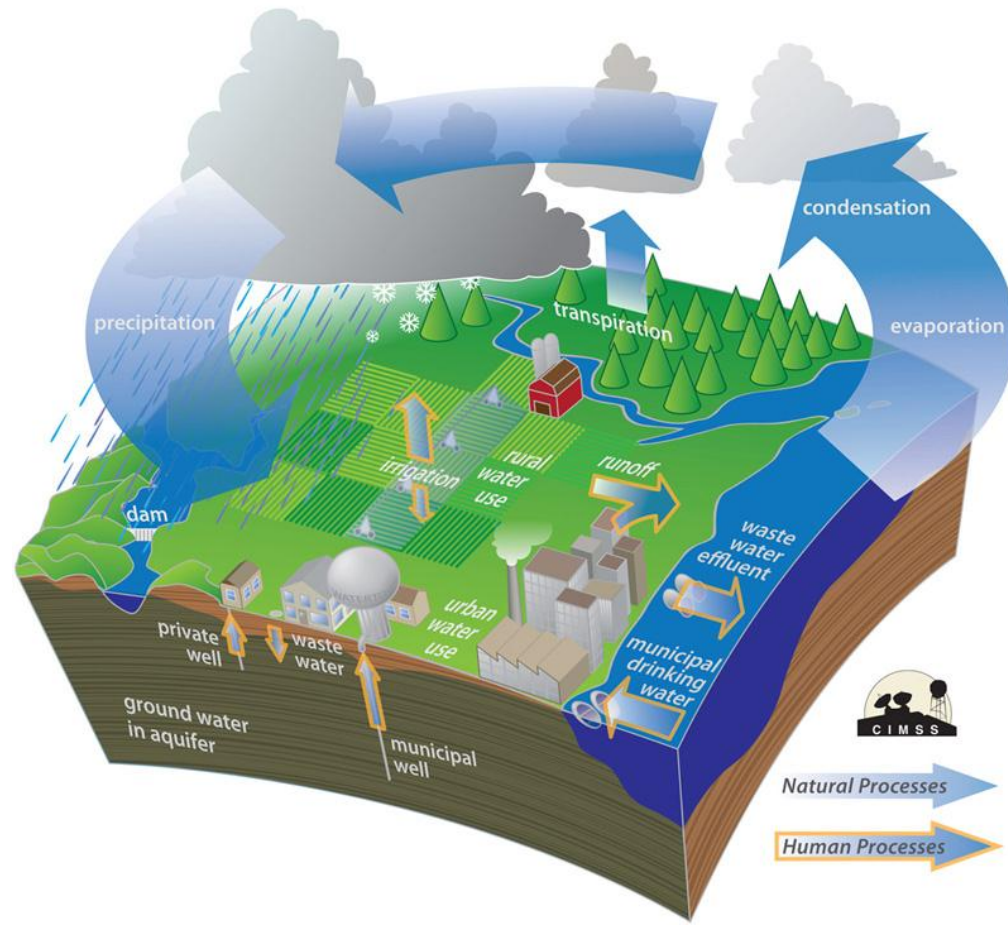
What are the
water cycle
issues for
Ipswich?

What are we
doing to
overcome
them?

Integrated Water Management

Integrated water management is an ongoing process of cost effectively improving water management in a way that meets community expectations while maximising social and environmental benefits.

It recognises all the elements of the water cycle and considers the interactions between them when decisions are made.





Establishes a
future vision and
strategic objectives

Sets out the
priority water cycle
issues for the city

Identified key
stakeholders

Establishes a
framework to
achieve the vision

Sets out high
priority actions

Ipswich City
Council's
Integrated
Water Strategy



Enviably climate



Fantastic recreational
opportunities



Beautiful landscapes

Key Water Issues For Ipswich



Flooding



Riparian condition & water quality



Climate change & urban heat island impacts



Urban growth

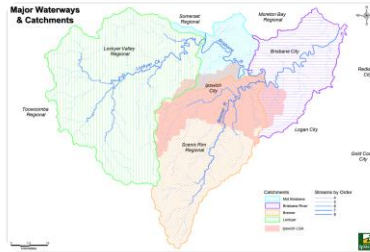


Erosion and sediment

Issues Continued...



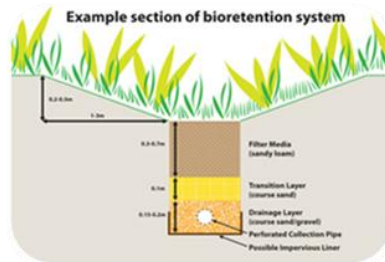
Drought



External influences – location within catchment



Water use in Council facilities

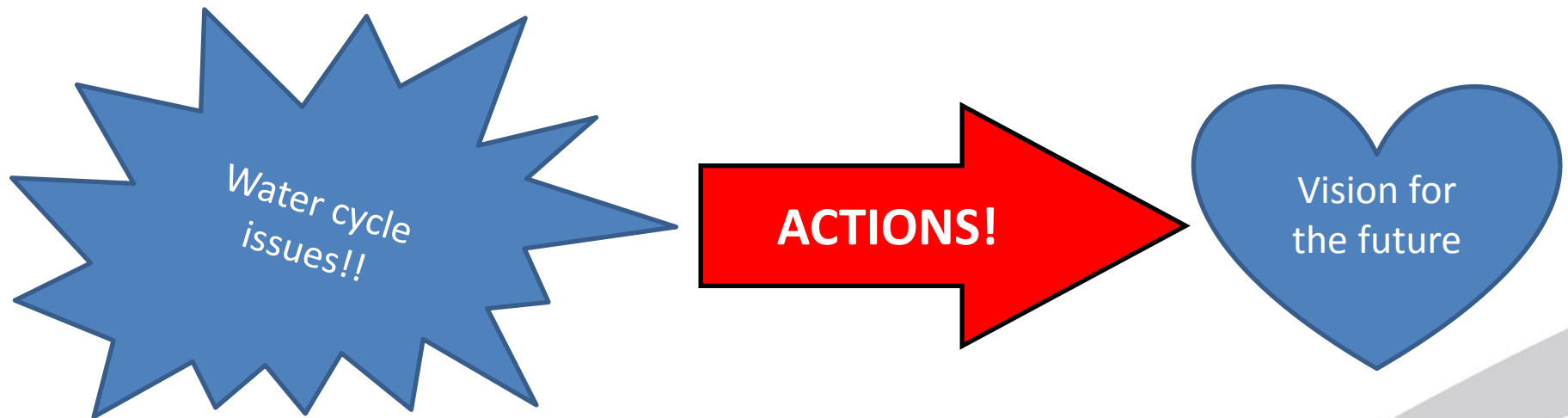


Stormwater management



Salinity

How do we reach our vision?



Strategic Framework

Protection and
Enhancement
of the Natural
Environment



Community
Resilience and
Liveability



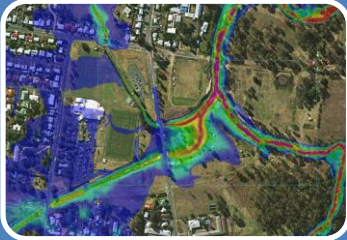
Economic
Development
and Efficient
Resource Use



Communication
and
Collaboration



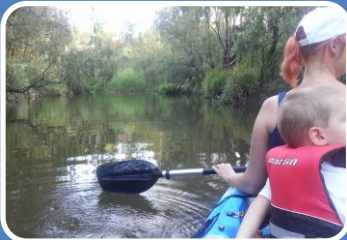
Key Actions



Advancing our understanding of flooding



Regional erosion and sediment control partnerships through Healthy Waterways



Encouraging engagement with our waterways

- Fathers' day fishing competition & Trees for Mums day
- Waterway plans – Black Snake Creek



Water efficiency measures

- Stormwater harvesting opportunities
- Irrigation efficiency in Council parks



Engaging with the Water Sensitive Cities CRC to work towards outcomes for the Ripley Valley



Considering options appropriate use of stormwater offsets

The End...

Please visit www.ipswich.qld.gov.au to download the Integrated Water Strategy in full.

