

EBBW VALE CITATIONS
Table of Contents

Ebbw Vale Drainpipes Limited	26 Brisbane Road
Ebbw Vale Triassic Fossil locality	41 Cairns Road
Ebbw War Memorial & Surrounds	11a Brisbane Road
High Street Precinct	High Street
Reliance Pottery Clay Pits	41 Cairns Road
Sandhurst	35 Brisbane Road

Name Ebbwvale Drainpipes Limited

Former/Other Name Ebbw Vale Brick and Pottery Works/Ebbw Vale Brick Co. Ltd.

Category Industrial/factory complex

Location 26 Brisbane Road, Ebbw Vale 4304

RPD Lots 2 & 3 of RP106804, Par Goodna, Co Stanley

Local Authority Ipswich City Council

AMG Map Sheet SG 56-14, Ipswich **Grid** MQ7645

Present Tenure Ebbw Vale Drainpipes Limited
PO Box 6
Booval Qld 4304

Listing Boundary That part of the property that extends northwards from the railway line to include the clay pit.

Other Listings -

History

Opened in 1911 as the Ebbw Vale Brick Co. Ltd making bricks from its own clay pit on ML474. Subsequently it moved into all types of vitrified clay pipes, fittings, and agricultural pipes using materials from ML 231 of Rylance Collieries and Brickworks Pty Ltd, from a small pit adjacent to the St Helens football ground. Currently the company makes pavers and sanitary and chemically resistant earthenware pipes.

Description

A complete brickworks/pottery complex adjacent to its own clay-hole which is now worked out and is currently being back-filled; most of the clay now comes from elsewhere. The pottery has two kilns, a circular hand-loaded kiln and a very modern kiln, together with a wealth of pottery and clay-handling machinery.

Significance **Level** *local* *Xcity* *regional* *state* *national*

- One of the few Ipswich potteries using traditional methods of manufacture.

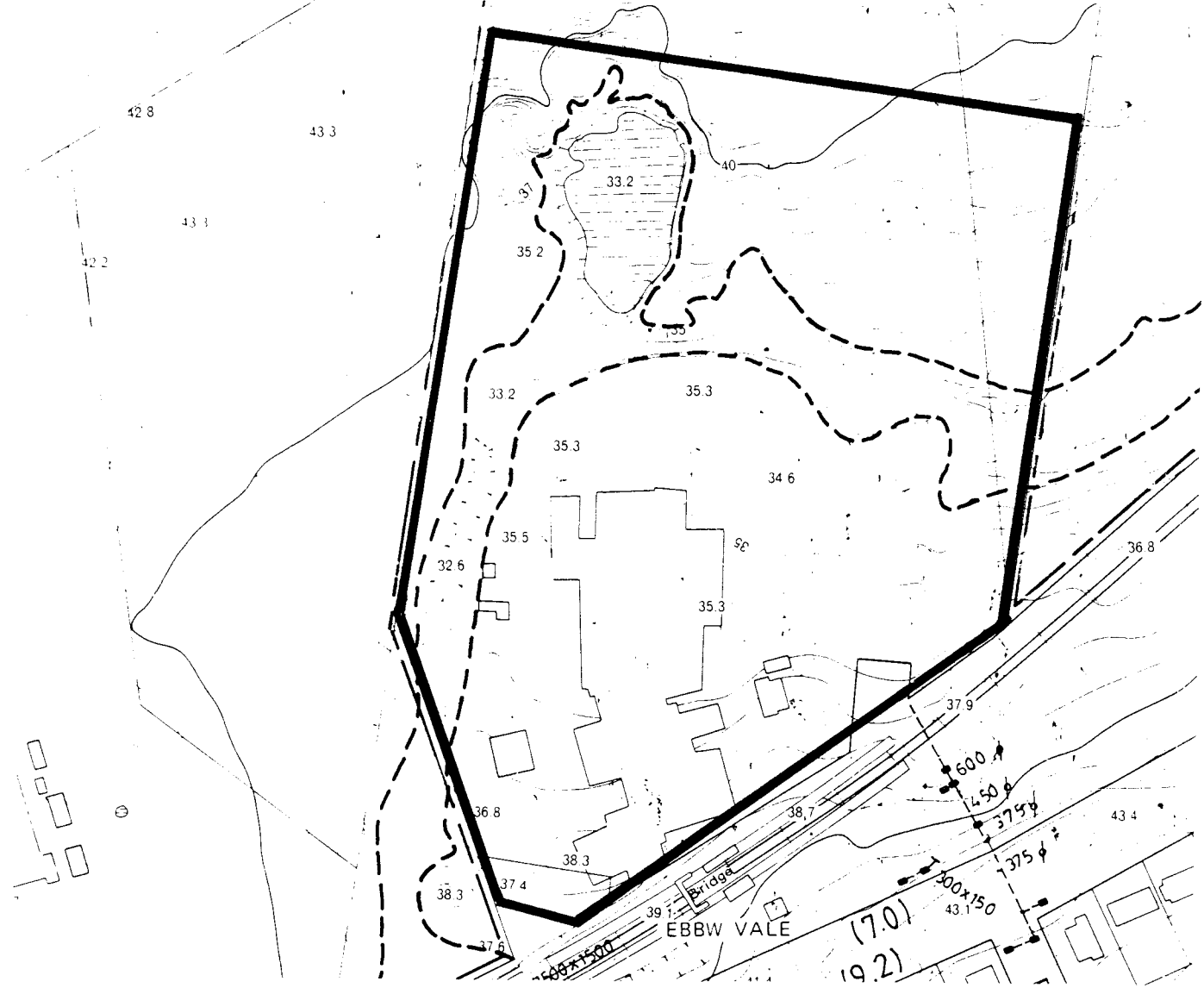
Significance of Interior

Associated Items

Comments

This site could have tourist potential, but requires a detailed industrial archaeological study and the preparation of explicit statements of significance.

Note: This report has been prepared on the basis of evidence examined by the investigator(s) and seeks to identify the most important heritage values of the item. The purpose of this report is to provide an initial evaluation. A conservation study by a qualified practitioner should be completed before any action is taken which may affect the significance of the item.



Source: Ipswich City Council. City of Ipswich topographic series. Amended to August 1990. Scale 1:2500. North at top of map.

Name Ebbw Vale Triassic Fossil Locality

Former/Other Name Rylance Collieries and Brickworks Pty Ltd, Dinmore;
Dinmore Triassic Fossil Locality

Category Quarry

Location 41 Cairns Road, Ebbw Vale 4304

RPD Lot 1 RP189137, Par Goodna, Co Stanley (formerly
Sub 89 of Portion 258)

Local Authority Ipswich City Council

AMG Map Sheet SG 56-14, Ipswich Grid MQ7645

Present Tenure M & J L Feeney Pty Ltd
"Trustee for the Feeney Family Trust"
P O Box 1, Booval Q 4304

Listing Boundary All land circumscribed in the accompanying plan.

Other Listings -

History

The quarry was initially excavated as a source of shale by Rylance Colliery and Brickworks Pty Ltd for use with other clays and crushed rocks in the production of firebricks, high alumina firebricks, acid resistant bricks, fireblocks, moulded refractory shapes, and building bricks. Clays were also worked in conjunction with open-cut coal mining to the south of the quarry.

Description

The quarry is a small very white outcrop directly under a major power line on the western side of a gully, in gently dipping shale of the Late Triassic Blackstone Formation, the upper unit of Ipswich Coal Measures. Stratigraphically located between the Bluff and Aberdare seams, the shale is approximately 3 m thick and overlies sandstone. Very abundant, well-preserved plant fossils are present as impressions in shale as well as small bivalved crustaceans (conchostracans) and rare insect fossils. The site is the type locality of Thaumatopteris shirleyi Herbst 1979, a dipteridacean fern, closely related to some modern-day ferns.

As the shale bed is of limited extent, it is unlikely that further quarrying will occur. Spoil dumps from the large open-cut coal mine operated by Rylance Colliery and Brickworks have encroached towards the plant fossil quarry.

Significance **Level** *local* *city* *Xregional* *state* *national*

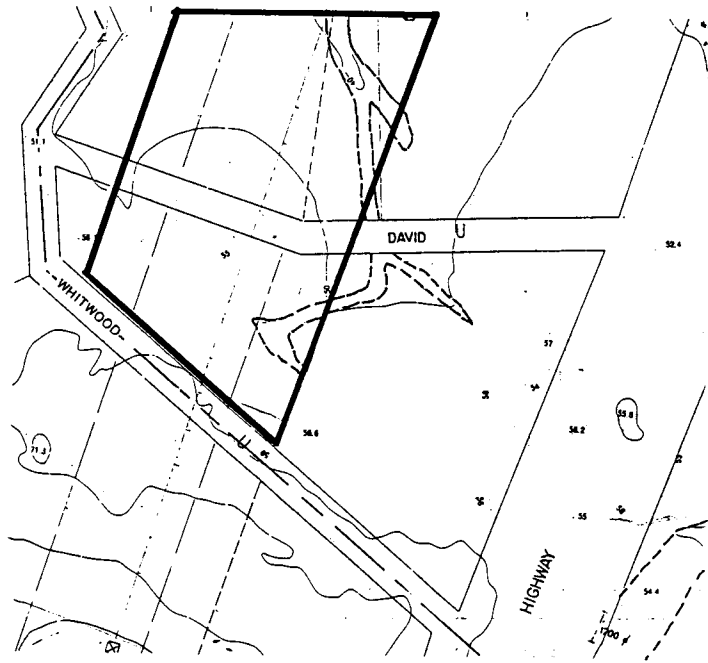
- One of best plant fossil localities in Southeast Queensland in the Triassic Ipswich Coal Measures.
- Accessibility to the site and the quantity and variety of fossil material available make this site a valuable teaching resource. Its teaching value is enhanced by the close proximity of a Tertiary plant fossil locality in overlying rocks approximately 300 m to the north.

Significance of Interior Not Applicable

Associated Items

Overlying Tertiary sediments of the Redbank Plains Formation that contain abundant, well-preserved fossil plants, occur approximately 300 m to the north of this quarry along the line of the power lines.

Comments Ref: Houston, 1967 "Resources of Ceramic Clay Materials in Qld": 26; Willmott & Cooper 1978 Geol. Survey Qld Record 1978/3: 87; Willmott et al 1981. "Geological Sites in SE Qld": 100-104; Cranfield et al 1986 "Sediments and fossils of the Ipswich Basin": 14



Source: Ipswich City Council. City of Ipswich topographic series. Amended to August 1990. Scale 1:5000. North at top of map.

Name Ebbw Vale War Memorial and Surrounds

Former/Other Name Ebbw Vale Honour Stone

Category Memorial

Location 11A Brisbane Road, Ebbw Vale.

RPD L1 RP40461 Par Goodna

Local Authority Ipswich City Council

AMG Map Sheet SG 56-14, Ipswich **Grid** MQ7645

Present Tenure Ipswich City Council, 50 South Street, Ipswich Qld 4305

Listing Boundary A triangular section of the northern corner of the allotment, the westerly and easterly boundaries being lines 30 metres from that corner along the allotment boundary, joined by a line to the south between those two boundaries, plus adjoining footpath and including all established trees.

History

The statue was unveiled 11th May, 1918 by the Governor Sir Hamilton Goold-Adams. It was placed on land donated by the Commissioner for Railways, close to the Ebbw Vale railway station. It listed the names of the 22 men who enlisted, which represented 9% of the then total population of Ebbw Vale of around 280. The memorial was the work of Brisbane monumental mason A L Petrie. The memorial was resited to its present position after 1969. Apparently during this move the main inscription plate was replaced to the rear of the statue.

Description

A L Petrie's papers note that the monument was 15 and a half feet high, with the digger statue 5 and a half feet high and the pedestal 10 feet high. It is on concrete foundations which surround the base of rough faced grey granite, with chamfer and draft fine axed. The pedestal is Helidon white sandstone with pilasters of Helidon brown sandstone. It has recessed marble plates on all 4 faces and pilasters with corinthian capitals at each corner. It is surmounted by a life-sized sandstone digger in full marching kit standing on a base which is adorned on the front face with crossed Australian and British flags.

Significance **Level** **X**local city regional state national

- As evidence of the patriotic sentiments and loyalties of the local community early this century.
- As an example of masonry work, in particular that of A L Petrie.

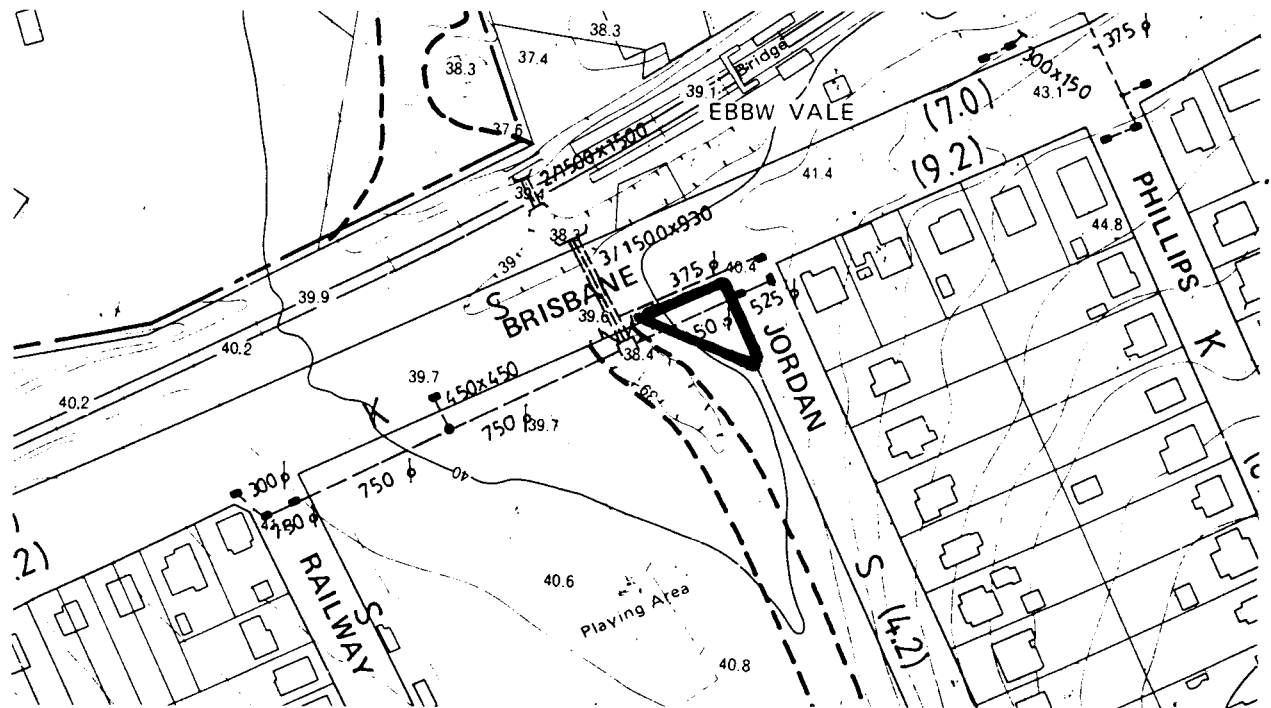
Significance of Interior Not applicable

Associated Items

Comments

It is recommended that the land be formally reserved for memorial purposes. We wish to thank Ms J McKay for access to her files of a 1984 survey of Queensland War Memorials from which the historical and descriptive information was drawn.

Note: This report has been prepared on the basis of evidence examined by the investigator(s) and seeks to identify the most important heritage values of the item. The purpose of this report is to provide an initial evaluation. A conservation study by a qualified practitioner should be completed before any action is taken which may affect the significance of the item.



Source: Ipswich City Council. City of Ipswich topographic series. Amended to August 1990. Scale 1:2500. North at top of map. "@" = associated items.

Name High Street, Ebbw Vale Precinct

Former/Other Name

Category Precinct

Location 2, 4, 6, 8, 10, 12, 14, 16, 18 High Street, Ebbw Vale; 1, 3 and 5 High Street, Bundamba; 97 Brisbane Road, Bundamba.

RPD As per the various addresses above.

Local Authority Ipswich City Council

AMG Map Sheet SG 56-14, Ipswich **Grid** MQ7645

Present Tenure As per the various addresses above.

Listing Boundary All land, public and private, circumscribed in the accompanying plan and including all established trees

Other Listings

History

Description

This is a group of interesting and mixed housing forms along High Street, where it branches off Brisbane Road and rises gently to a backdrop of eucalyptus forest. Wide grassed footpaths set off the distinct, though modified house forms. On the corner, 97 Brisbane Road is a square plan, low set timber house with a low pitched corrugated iron roof extending continuously over the front and side verandahs which have been partially enclosed. Timber verandah detailing includes triple rail balustrading, moulded capitals and paired fretwork brackets atop chamfered verandah posts. The rectangular appearance of this front verandah is enhanced by a central gable pediment with timber infill decoration. A mature camphor tree in the southeastern corner of this allotment links into the High Street view as does the picket fence.

The house at 5 High Street is a focal item of the precinct. It is a basically square plan house high set on concrete stumps with a front left, chamferboard gable projection and rear right pyramid roofed chamferboard kitchen house. The main roof is corrugated iron, as is the stepped down, slightly convex verandah roof which abuts on the front gable projection and extends down the right side to the rear kitchen house. The verandah walls are lined internally with vertical boards and have exposed nogging. French doors lead onto the verandah, whose timber detailing includes triple railed balustrading, moulded capitals and paired decorative timber brackets atop chamfered verandah posts. A set of stairs with metal balustrading leads to a verandah door and entry bay with a timber valance matching the brackets. The front projecting gable has decorative timber barge infill treatment and a sidelighted window with a corrugated iron battened window hood.

Across the street, the house at 4 High Street is a low set house, with curved roof over front verandah, stepped down from the main pyramid roof which slightly overhands on pairs of decorative eaves brackets. The verandah, open with dowel balustrading, is partly screened in lattice. A brick chimney stands towards to rear and battened window hoods are a feature of the side wall. A large silky oak tree in the front garden strip is focal in views from the opposite ends of the precinct.

The house at 6 High Street is higher set, with bull-nosed verandah roof stepped down over partly enclosed verandahs. This form is repeated further along in the house at 14 High Street. 8 High Street is a low set again, with twin gables parallel to the street and a front verandah roof stepped straight out. The verandah is sheeted, like the house, in weatherboards, to balustrade height. Cross bracing to the chamferboard front wall is exposed.

Significance **Level** *X*local city regional state national

- As a grouping of a variety of houses of traditional materials, form and detailing
- For its streetscape value

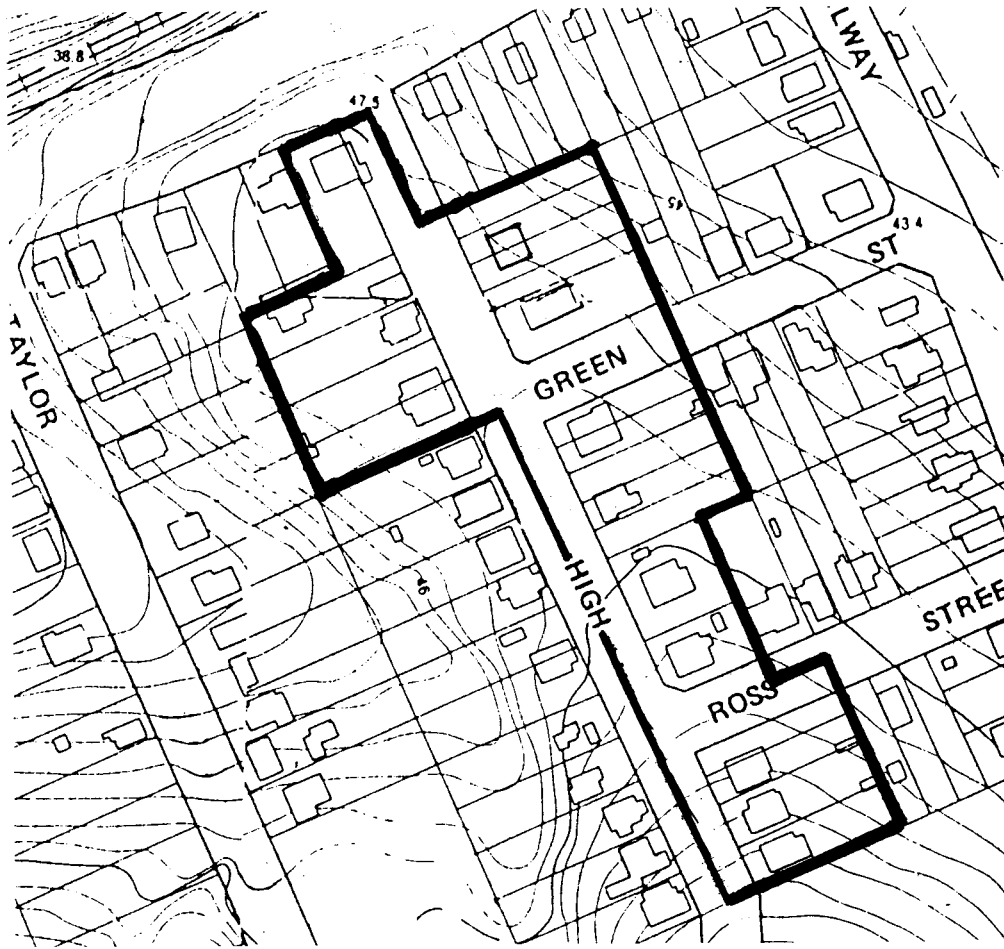
Significance of Interior Not applicable

Associated Items

Comments

The houses at 2 High Street and 16 High Street, Ebbw Vale do not require heritage constraints at this time.

Note: This report has been prepared on the basis of evidence examined by the investigator(s) and seeks to identify the most important heritage values of the item. The purpose of this report is to provide an initial evaluation. A conservation study by a qualified practitioner should be completed before any action is taken which may affect the significance of the item.



Source: Ipswich City Council. City of Ipswich topographic series. Amended to August 1990. Scale 1:2500. North at top of map. "@" = associated items.

Name Reliance Pottery Clay Pits

Former/Other Name Dinmore Clay Pits; Hudsons and Sons Pty Ltd; ML685

Category Quarry

Location 41 Cairns Road, Ebbw Vale 4304

RPD Lot 1 RP189137, Par Goodna, Co Stanley (formerly Sub 3 of Portion 259)

Local Authority Ipswich City Council

AMG Map Sheet SG 56-14, Ipswich **Grid** MQ7645

Present Tenure M & J L Feeney Pty Ltd
"Trustee for the Feeney Family Trust"
P O Box 1, Booval Q 4304

Listing Boundary All land circumscribed in the accompanying plan.

Other Listings -

History

Workings opened in 1887 as Reliance Pottery. More recently owned by Jennings Industries, the company manufactured vitrified clay pipes, fittings, agricultural pipes, and paving tiles until 1976 when works closed. The area was subsequently held under Mining Lease 685 by Hudsons and Sons Pty Ltd who distributed the mined clay to local ceramic producers throughout the Ipswich area for pottery and floor tile manufacture.

Description

Moderate to large clay pits in buff-coloured, sub-horizontal claystones of the Tertiary Redbank Plains Formation which in the past were used extensively as a source of pottery clay. They are still intermittently, although infrequently, worked. The rocks consist predominantly of clays and shales overlain by thinly bedded sandstone which rapidly become very weathered on cessation of quarrying activities.

The site lies under and to the east of major power lines and has been used to carry the underground gas pipe line and the local water supply main. The disused parts of the quarry have been reclaimed by native vegetation.

The claystones contain abundant well preserved dicotyledonous leaf impressions that are flattened along the bedding planes of the rock. The leaves are closely related to many present-day plants. The locality of fossiliferous strata at any time varies according to the quarrying activity. A pit has been developed in the quarry below the power line to exploit a fossil-rich shale underlying a protective sandstone layer.

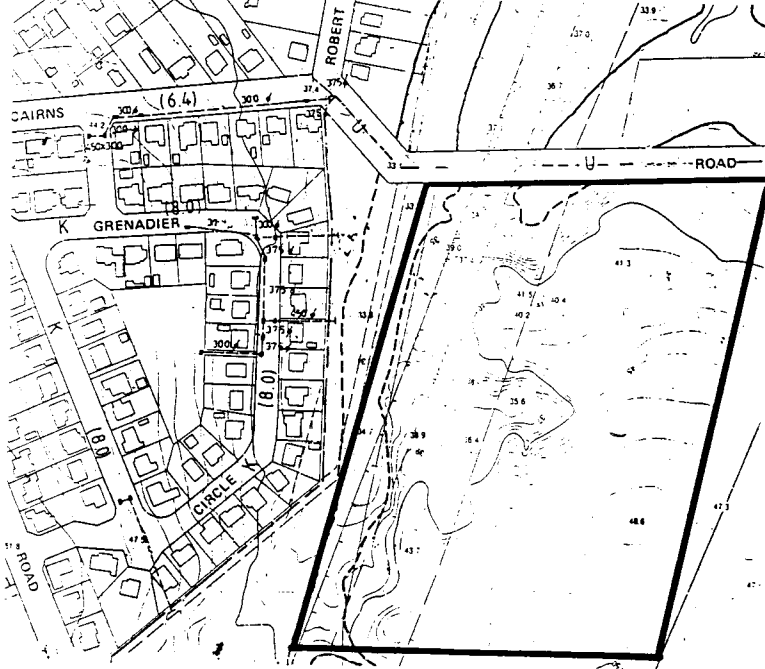
Significance **Level** *local* *city* *Xregional* *state* *national*

- Probably the best locality for Tertiary plant fossils in Southeast Queensland.
- An excellent teaching site because of its ready accessibility and proximity to Brisbane. Its teaching value is enhanced by the close proximity of a Triassic plant fossil locality in the underlying rocks approximately 300 m to the south.

Significance of Interior Not Applicable

Associated Items

Underlying Triassic sediments of the Blackstone Formation of the Ipswich Coal Measures containing abundant, well-preserved plant fossils occur approximately 300 m to the south of this quarry along the line of the power lines.



Source: Ipswich City Council. City of Ipswich topographic series. Amended to August 1990. Scale 1:5000. North at top of map.

Name "Sandhurst"

Former/Other Name

Category House

Location 35 Brisbane Road, Ebbw Vale

RPD L2 RP83652 Par Goodna

Local Authority Ipswich City Council

AMG Map Sheet SG 56-14, Ipswich Grid MQ7645

Present Tenure Mr D T & Mrs G M Stinger, 35 Brisbane Road, Ebbw Vale Qld 4304

Listing Boundary Whole allotment, plus adjoining footpath and including all established trees.

Other Listings

History

The house is said to have been built about 1875 for Mr C Agnew who owned brickworks at Ebbw Vale. The house was bought in 1890's by the owner of nearby Whitwood Colliery, John Stafford, who lived in it with his large family until his death in 1911. The grounds in those days held buggy sheds which later housed one of the first motor cars in Ipswich, owned by John Stafford's son, Percy. The next owner of the house, Major William Clatworthy, became manager of Ebbw Vale Brick Company in 1914. He served in the Queensland Volunteer Rifles from 1889 to 1894, then gained a commission in the First Queenslanders' Regiment and rose to the rank of major. The house has had a number of subsequent owners. The house apparently originally had timber balustrading to the verandah.

Description

The brick house has a corrugated iron hip roof which is continuous over the three wide verandahs. Two rear hipped projections, also with corrugated iron rooves but with close eaves, give the house an overall "U" shaped plan although there has been some enclosures between these rear wings. The bricks are laid in English bond with flat arches above the window openings. Some of the bricks have a distinctive purple cast and the brick chimney is corbelled. The verandahs feature ornate metal panelling and brackets and are low set on timber stumps.

Significance **Level** local city Xregional state national

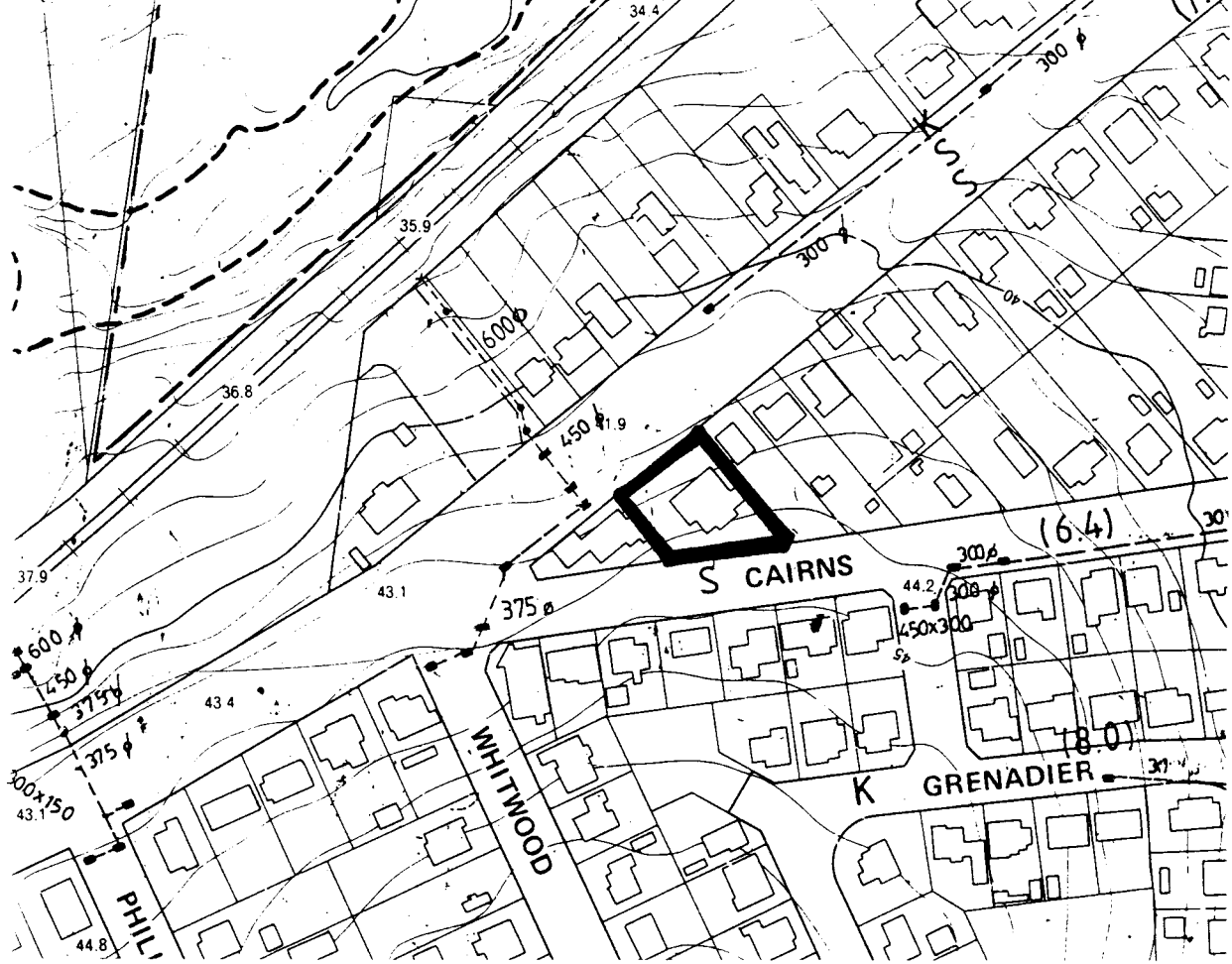
- As an example of a moderately large late 19th century brick dwelling.
- For its association with early proprietors of brickworks and Whitwood Colliery.

Significance of Interior Not inspected

Associated Items**Comments**

Historical information from Robyn Buchanan *Queensland Times* article 18/7/1986 :6 and Alan Cooper, NTQ(IB).

Note: This report has been prepared on the basis of evidence examined by the investigator(s) and seeks to identify the most important heritage values of the item. The purpose of this report is to provide an initial evaluation. A conservation study by a qualified practitioner should be completed before any action is taken which may affect the significance of the item.



Source: Ipswich City Council. City of Ipswich topographic series. Amended to August 1990. Scale 1:2500. North at top of map. "@" = associated items.