

Environment and Sustainability

2026 PROGRAM



EVENTS | ACTIVITIES | OPPORTUNITIES

MAYOR'S MESSAGE



Our city's population is set to double in the next two decades. As we look to the horizon we see both opportunities and challenges ahead in our shared vision for a clean, green and liveable city.

Ipswich City Council continues to build on a legacy of action that safeguards the city's future. Through its ongoing commitment to the Enviroplan initiative, which was established thirty years ago to secure land for conservation, council is ensuring that thousands of hectares remain protected for generations to come.

Our council continues to lead the way for a sustainable future for our growing population. Initiatives such as the rollout of Garden Organics (GO) bins to households, construction of a Materials Recovery Facility and increasing our local Resource Recovery facility capacity will create both environmental and community benefits now and into the future.

Mayor Teresa Harding
City of Ipswich

CHAIR'S MESSAGE



Across Ipswich we are fortunate to have individuals and groups across our community committed to making a difference for our natural environment.

Each year council supports local initiatives, from the Enviroplan initiative helping landholders with ecosystem restoration on their properties, to providing tools and training to Bushcare volunteers. By working together we can achieve great things.

Even seemingly small actions at home can make a big difference, when we act as a collective. It can be as simple as sorting your recycling, planting local natives in your garden or lending a hand to a community planting day. It all adds up for positive change.

Councillor Jim Madden
Environment and Sustainability
Committee Chairperson

PROGRAM SNAPSHOT

Key events in 2026

Urban Greening	4
Sustainable Ipswich	5
Restoring waterways	6
WaterFest	7

What you can do in the community

Conservation estates	8
Enviro volunteers	10
Queens Park	11
EnviroEd	12
Funding and grants	13

What you can do at home

Waste services	14
Landholder Partnerships	16
Free Plant Program	17
Get Ready	18
Disaster Dashboard	19



Ipswich City Council respectfully acknowledges the Traditional Owners, the Jagera, Yuggera and Ugarapul People of the Yugara/Yagara Language Group, as custodians of the land and waters we share. We pay our respects to their Elders past and present, as the keepers of the traditions, customs, cultures and stories of proud peoples.



Subscribe to Enviro updates

The monthly Environment Matters e-newsletter sends the latest news about Ipswich's natural environment and sustainability initiatives straight to your inbox.

Subscribe for updates at ipswich.qld.gov.au/subscribe

URBAN GREENING



Trees in urban areas bring multiple benefits for people and the environment.

Cooling neighbourhoods, absorbing and filtering pollutants, providing habitat, increasing enjoyment of local areas and more!

Council has a strategic approach to prioritising areas for street trees and other urban greening improvements to create a more resilient and liveable city.

You can read more about actions for our city in the Urban Greening Plan at lpswich.qld.gov.au



GREENING YOUR SUBURB

Council will hold free community planting days in priority suburbs in 2026.

You can help bring the benefits of urban greening to local neighbourhoods.

These events are part of delivering goals in the Urban Greening Plan.



NATIONAL TREE DAY

Organise a planting or join in one near you – there's options for schools, businesses and community held in the last week of July.

[Treeday.planetark.org](https://www.treeday.org.au)

Stay up to date

Events.humanitix.com/host/icc-environment

Click 'follow' to receive notifications of when new events are added.

Cost: Free

SUSTAINABLE IPSWICH

During September & October celebrate community action to increase our city's sustainability.

By sharing stories, knowledge and ideas we can live, eat and play the sustainable way!

A range of activities will encourage grassroots action to make Ipswich a more liveable city.

SUSTAINABLE OPEN GARDEN TRAIL

Be inspired by local Ipswich homeowners creating sustainable backyards. These properties are part of council's free Habitat Gardens program and full of ideas for you to take home!

WORKSHOPS AND ACTIVITIES

Community partners host a variety of informative and entertaining workshops and events. Find out what sustainability initiatives are happening in Ipswich - and get involved!

QUEENS PARK ENVIRONMENTAL EDUCATION CENTRE

From school holiday fun for kids, through to hands-on adult learning workshops, there's something for everyone at the centre.



See the full program

ipswich.qld.gov.au/sustainability

There will be so much happening to celebrate Sustainable Ipswich! Find details and register for a range of events and activities.

Cost: Free and low cost

RESTORING WATERWAYS



Join free community planting events and help create habitat for wildlife along our waterways.

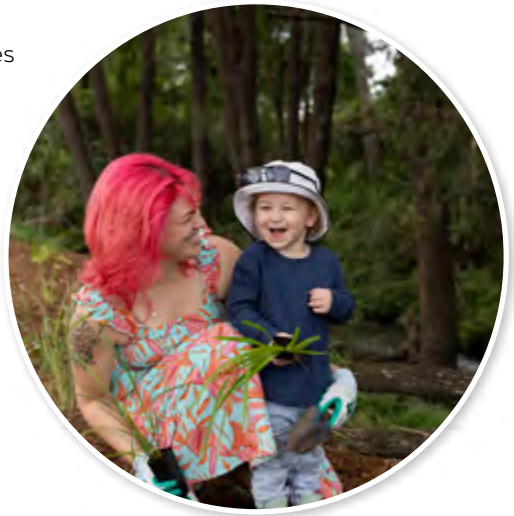
Healthy waterway vegetation plays an important role in:

- the lifecycle of many native animals and ecosystems for land and water-based species
- improving soil fertility and productivity of surrounding land
- reducing flood damage and decreasing erosion
- improving water quality and filtering harmful pollutants and nutrients
- regulating water temperature and providing urban cooling
- providing recreational opportunities and improving visual amenity.

TREES FOR MUM

Sunday 10 May 2026

This annual event celebrates Mothers Day, where you can plant a tree with, or to honour, that special person in your life and improve the environment of an urban creek.



WORLD RIVERS DAY

Sunday 27 September 2026

Join in riverbank restoration planting event that creates a healthier environment for species that rely on our river systems such as platypus.

REGISTER ONLINE

There are community planting events held through the year, at various locations.

Events.humanitix.com/host/icc-environment

Cost: Free

WATERFEST

Be inspired to get outdoors and appreciate Ipswich's Bremer River and our stretch of the Brisbane River, the many creeks within our catchment and Ipswich environmental initiatives.

There is something for everyone in the program of events, which includes unique and exciting opportunities.

HIGHLIGHTS

- Catch Snap & Win Fishing Competition
- Learn to fish and canoeing lessons
- School holiday events and activities
- Agents of Discovery missions
- And much more!

CATCH SNAP & WIN FISHING COMPETITION

Hosted by Ipswich City Council and 2 Bent Rods, join in this fun fishing competition.

Drop a line in waterways across Ipswich (some exclusions apply) and submit your catch for your chance to win!

Competition information and Terms and Conditions will be available at ipswich.qld.gov.au/waterfest



For more tips on great places to try, see the Fishing Places of Ipswich guide

SEE THE FULL PROGRAM

ipswich.qld.gov.au/waterfest

Cost: Free and low cost



CONSERVATION ESTATES

Ipswich has many conservation estates and reserves you can explore. These are funded through council's Ipswich Enviroplan initiative.

WHITE ROCK – SPRING MOUNTAIN CONSERVATION ESTATE

A popular estate for nature-based recreation. Includes the iconic White Rock which has cultural significance to the Traditional Owners.

FLINDERS-GOOLMAN CONSERVATION ESTATE

Home to Ipswich's faunal emblem, the brush-tailed rock-wallaby. Also offers bush camping and Ipswich's most challenging hike.

PURGA NATURE RESERVE

Contains the largest protected area of endangered Swamp Tea-tree forest.

DENMARK HILL CONSERVATION RESERVE

Restored urban bushland with remnants of a mining history.



HAIG STREET QUARRY CONSERVATION RESERVE

A birdwatching hotspot with family friendly bushwalks.

HILLVIEW DRIVE RESERVE

Popular for mountain biking and bushwalking.

RIC NATTRASS ENVIRONMENTAL PARK

On Woogaroo Creek, it connects other conservation areas.

IPSWICH PTEROPUS CONSERVATION PARK

Also known as Woodend Nature Centre, it is home to a flying fox colony.



Did you know?

Ipswich has 13 conservation estates and reserves that cover more than 6,700 hectares.

Over 30 years about \$13 million has been invested through Ipswich Enviroplan to purchase land for nature conservation.

Enviroplan also funds vital works in these conservation areas such as weed and pest control, fire mitigation, research and planning, and visitor infrastructure.

It also supports landholders with preserving and increasing the environmental values of their properties through incentives such as free plants, technical advice or grants.

ENVIRO VOLUNTEERS



There is something for everyone when it comes to environmental volunteering with council.

When you volunteer with council you support creating a healthier natural environment – whether through hands-on activities or education and awareness.

BUSHCARE

There are about a dozen Bushcare sites across Ipswich where volunteers improve local natural areas with weeding, watering, planting and more. Turn up to any regular working bee to try it out!



QUEENS PARK

At the **Environmental Education Centre** volunteers assist with the day-to-day running of the centre such as greeting visitors, preparing craft activities and helping school groups.

At the **Ipswich Nature Centre** volunteers make a difference to the daily function of the facility including cleaning enclosures and preparing food for animals.



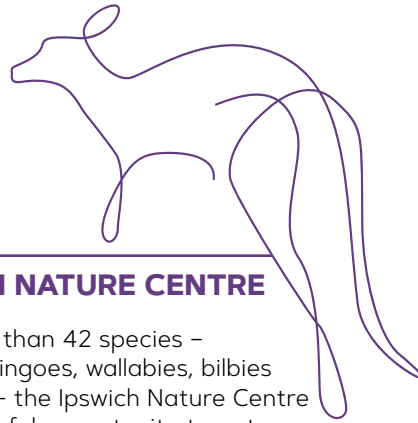
Find volunteering opportunities and register through the Volunteer Portal.

ipswich.qld.gov.au/volunteering

QUEENS PARK

This popular destination offers a variety of environment-related features and activities.

The historic Queens Park in the centre of Ipswich has plenty of attractions for a full day out, including cafe, gardens, plant nursery, playgrounds and more.



IPSWICH NATURE CENTRE

With more than 42 species – including dingoes, wallabies, bilbies and more – the Ipswich Nature Centre is a wonderful opportunity to get up close with native wildlife.

**Open 9.30 am to 4.00 pm,
Tuesday to Sunday**

Free entry (gold coin donation appreciated – new cashless donation option available from 2026)



QUEENS PARK ENVIRONMENTAL EDUCATION CENTRE

In the heart of Queens Park is an education centre with environmental information and activities for all ages.

**Open Tuesday to Saturday
9.00 am – 2.00 pm**

Free entry



ENVIROED

This program of child-focused activities is designed to educate and empower our next generation of environmental stewards.

EnviroEd includes events, training, resources and excursions specifically to support schools and families with environmental education.

RESOURCES

Council supports schools with access to key resources for environmental education, including waterbug kits for schools to borrow and suggestions for local creek sites.

Digital resources are also available online at ipswich.qld.gov.au/enviroed

ECOMARINES FOUNDATION

Through a partnership with EcoMarines Foundation, council is providing more opportunities for Ipswich schools to join the inspirational program.

This includes opportunities for both primary and secondary schools in Ipswich.

In May 2026 the Youth Sustainability Summit will be delivered by council in partnership with EcoMarines Foundation.

EXCURSIONS

School groups can organise excursions to Queens Park and can be provided with a recommended program for visiting the Ipswich Nature Centre and Environmental Education Centre.

The program can include a short presentation by a council officer as well as time to explore the play-based learning experiences.



Find out more

ipswich.qld.gov.au/enviroed

Discover information on activities and resources for students, schools, teachers and families.



FUNDING AND GRANTS

Funding opportunities are available to help launch new projects and ideas for environmental projects in our community.

Council is committed to supporting community initiatives and partnerships that contribute to a vibrant, healthy and sustainable city.

Enviroplan Levy Community Funding

Supports initiatives that protect and maintain the natural environment across Ipswich. Examples include conservation projects, improvements to native habitat, tree planting and community environmental education.

Up to \$3,000 for not-for-profit organisations, schools and childcare centres. Up to \$1,500 for wildlife carers.

Ti Tree Community Funding

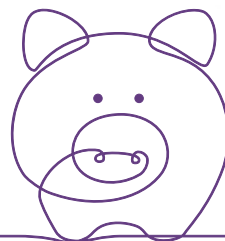
Supports projects that provide community and/or environmental benefits, particularly where it offsets social and/or environmental impacts of the Ti Tree Bioenergy Facility in Willowbank.

Up to \$15,000 for individuals, not-for-profit organisations and businesses.

Apply online

ipswich.qld.gov.au/funding

Application rounds occur in March and September each year.



WASTE SERVICES

It's easy to make your household wheelie bin collection easy and safe for everyone.

IPSWICH BIN APP

Never miss bin day again!

The free Ipswich Bin app provides information on exactly when your rubbish bins are collected. It features bin day reminders, waste sorting tips and important information on other events and services in your area.



Available on:



RESIDENTIAL BIN PLACEMENT

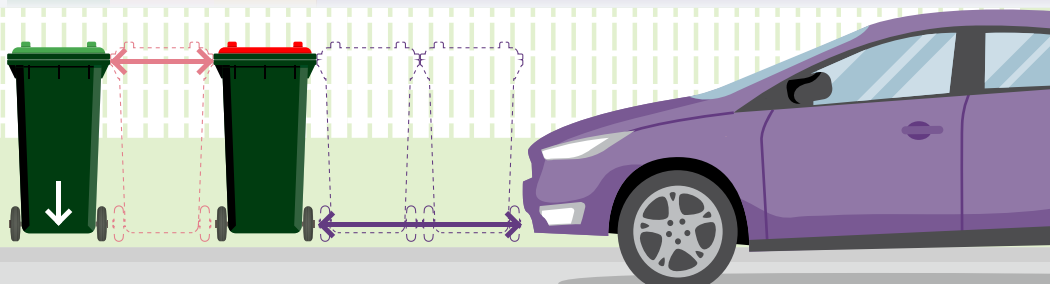
Face it: Face the front of your wheelie bin towards the roadside

Space it: Space bins a minimum of one wheelie bin width apart (about one metre between bins) and keep them a safe distance from cars, trees, powerpoles and other obstructions.

Place it: Look for overhead lines and wires. Place out the night before scheduled collection, or before 5.00 am on the day of service.

Park it: Make sure there is at least one metre of space between your bin and any parked cars.

Face it, **Space it,** **Place it,** **Park it...**



Being cleaner and greener at home is as simple as sorting your waste before putting it on the kerbside!

LARGE ITEM KERBSIDE COLLECTION

Ipswich residents have greater access and more flexibility to dispose of unwanted household items with an on-demand FLEXiSKIIP service.

- Each household is eligible for one free collection per year
- Households can order a 2m x 2m bag when it's convenient.

Under the on-demand model, materials are able to be recovered from landfill, with the bagged collection also meaning less chance of debris and litter on the kerbside.

See ipswich.qld.gov.au/kerbside

CO-MINGLED RECYCLING KERBSIDE COLLECTION

Remember to 'Recycle 5' in your yellow lid recycling bin:

- Glass jars and bottles
- Metal such as aluminium and steel (drink and aerosol cans, food tins)
- Plastic bottles and containers (milk, soft drink and shampoo bottles, yoghurt/icecream tubs)
- Cardboard boxes (including pizza boxes)
- Paper (newspapers, magazines, junk mail and office paper)

See ipswich.qld.gov.au/recycling

GARDEN ORGANICS (GO) KERBSIDE COLLECTION

Use your lime green lid GO bin for grass clippings, prunings, leaves, shrubs, weeds and loose bark.

This organic waste is turned into nutrient-rich compost which can be used in green spaces in Ipswich.

See ipswich.qld.gov.au/organics



LANDHOLDER PARTNERSHIPS

There are ways council can help private landholders achieve their environmental goals.

A range of free partnerships are available through the Enviroplan-funded Landholder Conservation Partnerships Program (LCPP).

These partnerships encourage and assist Ipswich landholders to manage, enhance and protect ecosystems in order to conserve flora and fauna on their properties.

The program has a range of incentives including free plants, resources, workshops and grant opportunities.



HABITAT GARDENS

This is an urban partnership designed to help people with smaller blocks make a positive contribution to Ipswich's environmental outcomes.

BIODIVERSITY CONSERVATION AGREEMENT

This partnership is designed to help protect and manage larger areas of important intact vegetation.

CORRIDOR CONSERVATION AGREEMENT

Under this partnership, landholders can be supported in restoring fragmented landscapes or waterway corridors.

LAND FOR WILDLIFE

This established program supports landholders committed to conserving and managing wildlife habitat.

VOLUNTARY CONSERVATION COVENANT

A permanent protection mechanism through the Land Titles Act that protects the ecological values of a property.

Join a partnership

ipswich.qld.gov.au/lcpp

Find more information on requirements and benefits of a partnership that suits your environmental goals.

FREE PLANT PROGRAM

Ipswich residents are entitled to free plants every financial year.

The plants are grown in council's production nursery and chosen to suit Ipswich's climate and conditions.

Your free plants are available from council's Queens Park Nursery, which is open limited hours, or the Mobile Nursery.

Generally, residents will be able to claim six free plants each financial year!

When you collect your plants you will need to present documentation, such as a current rates notice.

Ipswich residents are also able to purchase plants from the Queens Park Nursery (EFTPOS only).



Pick up your free plants

ipswich.qld.gov.au/freeplants

Find full details online, including:

- documentation requirements
- nursery opening hours
- mobile nursery dates and locations
- planting and gardening tips.



GET READY QUEENSLAND

get ready
QUEENSLAND

This year-round program helps all Queenslanders prepare for natural disasters.

There are simple things your household can do today to Get Ready.

HAVE AN EMERGENCY PLAN

Preparing now will save you time and stress in the event of a disaster.

Consider questions such as – do I stay or leave? Where can I find shelter? How will I care for pets? What if I cannot come home?



Use this online tool to help you prepare your household emergency plan

PREPARE AN EMERGENCY KIT

This kit should have everything your family needs to shelter at home for three days. If you already have an emergency kit, make time each year to check expiry dates and refresh it. Help your friends, family and neighbours get ready too – let's look out for each other.



Get Ready today

lpswich.qld.gov.au/disaster

Understand your local risk in Ipswich and find resources from checklists to translated resources.

DISASTER DASHBOARD

Stay up to date with the latest local information during a disaster or emergency.

It is free and easy – and works on a computer, tablet or smartphone.

Simply go to Disaster.ipswich.qld.gov.au

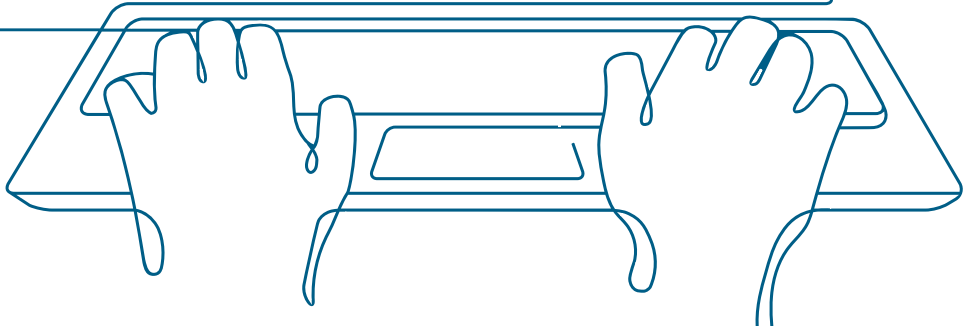
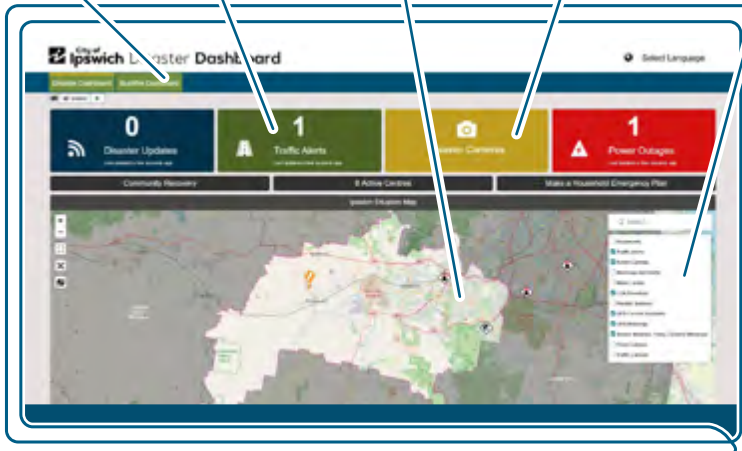
Check warnings for weather and fire conditions.

Find live feeds direct from the source, including BoM, Energex, QLD Traffic and more in one handy location.

See the local information you need on an interactive map.

View flood camera feeds updated every 10 minutes.

Choose the real-time information you want.



 **IPSWICH
ENVIROPLAN**

Ipswich City Council
PO Box 191, Ipswich QLD 4305, Australia

Phone (07) 3810 6666
council@ipswich.qld.gov.au
ipswich.qld.gov.au

Join us online:



/ipswichCityCouncil



/ipswich-city-council



/ipswichCityCouncilTV

*Recycle me
when you're done!*

Put me in your yellow lid recycling bin.

