

IPSWICH

connect

Enviroforum ...Page 2

Tourism brand a
driving force ...Page 3

Ipswich named
in Top 7 ...Page 24

**“Completion of Colleges Crossing marks
the last of the 2011 and 2013 flood
restoration projects”**

Mayor Paul Pisasale and Councillors



Welcome from the Mayor

A new year always brings with it the promise of hope and fresh ideas. The first council meeting 2015 established a new Futures Board to help drive new ideas and to take the microscope to the longer term vision for Ipswich.

Local government is the level of government closest to people. Your elected representatives must always be listening to residents and seeking views and ideas to help shape the future of our city.

Council's current long term Ipswich Community Plan i2031 is in need of a refresh to refocus priorities based on community feedback.

As your mayor and on behalf of all councillors it is important to remember that we represent all residents so it is vital that we get feedback through either face to face contact at regular Chat Times and other methods such as customer service feedback.

In the coming weeks we will actively seek out your views on a wide range of issues as together we face inevitable changes and manage growth in a sustainable way.

The future of Ipswich is in your hands so please join us in creating the kind of Ipswich we want for our families and future generations.

Paul

Mayor Paul Pisasale
City of Ipswich

FOLLOW THE MAYOR

@PaulPisasale

Mayor Paul Pisasale

Paulpisasalemayor

45 Roderick Street, Ipswich
T: (07) 3810 6201 F: (07) 3810 6730
E: ppisasale@ipswich.qld.gov.au

What's On

APRIL

- 11 Movies in the Park
The LEGO Movie (PG)
Sutton Park, Brassall



- 16 Ipswich Festival starts
25 ANZAC Day 2015

MAY

- 2 Ipswich Festival
Parade of Lights
15 Ipswich Show public holiday
16 Spartan Race, Peak Crossing



Contents

Mayor's Welcome	2
EnviroForum 2015	2
Tourism a driving force	3
Ipswich Civic Centre – Katie Noonan in Concert	3
Division 1	4
Division 2	6
Division 3	8
Division 4	10
Division 5	12
Division 6	14
Division 7	16
Division 8	18
Division 9	20
Division 10	22
Ipswich, Top 7 Intelligent Community	24

ENVIRO FORUM 2015

SHARING WATER WISDOM FOR A SUSTAINABLE FUTURE



Join us at this year's EnviroForum, exploring numerous aspects of sustainable water management and the importance of working together to achieve positive outcomes for the environment and our community.

FRIDAY, 1 MAY 2015

8.00 AM - 5.30 PM

BROOKWATER GOLF & COUNTRY CLUB
1 TOURNAMENT DRIVE, BROOKWATER

Seqwater field trip to Wivenhoe dam wall and the Mount Crosby water treatment plant (limited numbers, so book early).

FIELD TRIP

THURSDAY, 30 APRIL 2015

9.00 AM - 2.00 PM

DEPARTING FROM IPSWICH CBD

For further information visit
www.ipswich.qld.gov.au or
phone (07) 3810 6666



TOURISM BRAND A DRIVING FORCE BEHIND IPSWICH'S BOOMING ECONOMY

What was once a hidden secret, the City of Ipswich has become a driving force and leader in creating a place where people, education and businesses give us a real sense of community and a place we are proud to call home.

Bringing more people and boosting the local economy is Ipswich's tourism industry. Tourism has taken a major lead in recent years, contributing significantly to changing the perception of our city's image.

In 2013, tourism contributed \$136 million to the Ipswich economy with spending from 1.1 million visitors.

The majority of these visitors were attending events in the area, visiting local attractions or spending time with Ipswich based family and friends.

Tourism has been given a massive boost in recent years with major events including the V8 Supercar series, Winternationals, the Ipswich Festival and the massive Ipswich Cup race day.

This year will see even bigger visitor numbers with the CMC Rocks country music festival relocating to Ipswich from the Hunter Valley.

CMC Rocks had outgrown its previous venue and taking on the festival is a massive win for not only local country music fans, but the city as a whole.

CMC Rocks Ipswich is on from March



Volunteers Tricia Woodcock, Robyn Flashman and Wendy Knutsen proudly display three Queensland Tourism Awards won by the Ipswich Visitor Information Centre in 2013 and 2014

13 to 15 at Willowbank Raceway and is expected to attract more than 5000 international and interstate visitors to Ipswich. Last year CMC Rocks the Hunter brought in an estimated \$3.5 million to the local economy, and we're hoping to see a similar result for Ipswich.

As more than 10,000 patrons, artists and events staff travel to our city, Ipswich's accommodation venues, transport, food and beverage suppliers and tourism operators should benefit greatly.

This major event will not just be a one-off injection to our local economy, but it will put Ipswich in the spotlight and share images of our city around the world.

We're excited to welcome more visitors to Ipswich in 2015 and we have an award-winning world class tourism team ready to take it to the next level.

Last November, Ipswich scored gold at the 2014 Queensland Tourism Awards, taking out the category of Visitor Information and Services.

The award was a reflection of the tremendous quality of service delivered by the volunteers and staff at the Ipswich Visitor Information Centre.

Backing this Centre is a well-utilised Discover Ipswich website and well produced Discover Ipswich Guide which is distributed far and wide and captures the essence of Ipswich, highlighting its unique attributes.

Ipswich is a city full of fun attractions, events and experiences ready to be discovered.

The Ipswich Visitor Information Centre is located in Queens Park. Open seven days a week, the friendly team are ready to assist visitors in making the most of their visit. Services include a free booking service for accommodation, tours, attractions and airport bus transfers, internet access and it is also an agent for Ticketmaster and Ticketek.

For more information visit www.discoveripswich.com.au

Katie Noonan in Concert

Four time ARIA award winner Katie Noonan will be performing at the Ipswich Civic Centre on March 27 with her brand new band.

A mother, singer, producer, songwriter, pianist and business woman, Katie Noonan first received widespread praise as the angel-voice songstress of indie-pop band George and since then has won four ARIA awards and gone platinum seven times.

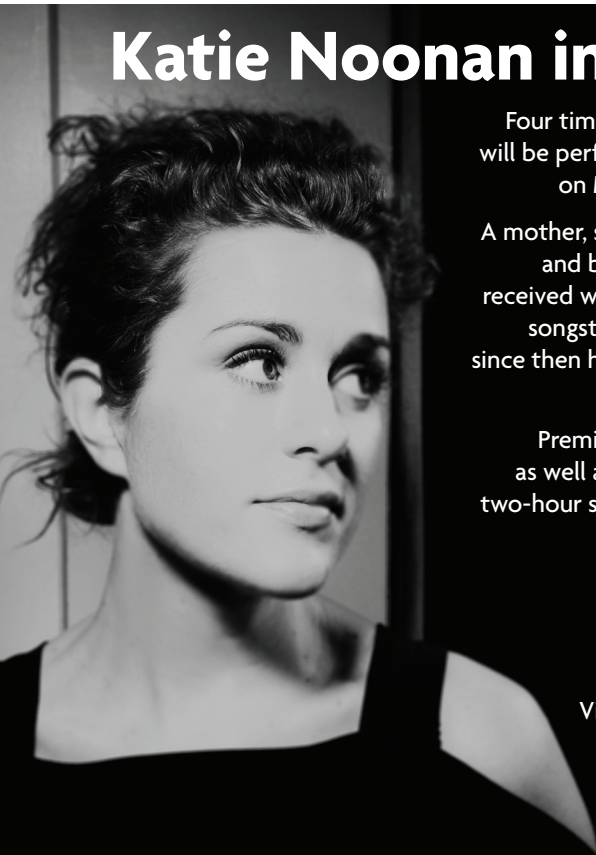
Premiering material from the new album as well as some of her favourite songs, this two-hour show marks the beginning of Katie's exciting new musical chapter.

TICKETS

\$48 for adults

\$42 for concession/student

Visit www.ipswichciviccentre.com.au
or call the box office
on (07) 3810 6100 to book





CR DAVID MORRISON
DIVISION 1

From my family to yours I would like to wish all our residents a very fruitful 2015.

The year is already shaping up to be a busy one in the Springfield area, with local schools, sporting clubs, community organisations and businesses already run off their feet as the area continues to grow.

My office is located on the corner of Woodcrest Way and Commercial Drive, Springfield.

My Electorate Officers are Shannon and Susan and the office is open Monday to Friday between 8.30am to 12.30pm and 1pm to 4pm. Shannon and Susan are also Justice of the Peace Qualified so any documents you need witnessed, please call 3818 3100 and arrange a time to drop in.

Please feel welcome to come and introduce yourself or bring any concerns if you think council can be of assistance.

Cr David Morrison
Chairperson Parks, Sport and Recreation Committee

4

29-31 Commercial Drive
Springfield
T: (07) 3818 3100
F: (07) 3818 1680
E: dmorrison@ipswich.qld.gov.au
@CrDavidMorrison
David Morrison

Division 1
Brookwater
Camira
Carole Park
Springfield
Springfield Central
Springfield Lakes

Queensland-first agreement for community use of sports oval

Local sporting groups can access the sporting oval at Woodcrest State College after hours thanks to a Queensland first arrangement between Ipswich City Council, the College and Education Queensland.

Ipswich City Council recently installed lights, canteen, toilets and change rooms to accommodate sporting clubs.

The oval is already used by Springfield United Football Club and the local AFL club is also looking at utilising the site

and while winter sports have already jumped at the chance to use the fields, there remains opportunities for summer sports.

The after-hours arrangement for local sporting groups is being used as a model for Education Queensland, who is looking at rolling out the initiative throughout the state.

Sporting groups wishing to use the oval can book through Ipswich City Council on 3810 6666.



Woodcrest State College Executive Principal Rod Evans and Councillor David Morrison inspect the oval facilities.

Must Do Ipswich

New Robelle Lagoon will attract 100,000 visitors

Robelle Domain at Springfield Central has become a popular attraction for families across south east Queensland and the opening of the new Robelle Lagoon soon will boost Ipswich's visitor numbers sky high.

Robelle Domain features open space, walking tracks, picnic facilities and a zero depth water play area. The second stage of Robelle Domain located in the newest area of the parklands will feature a lagoon-style pool similar in size to the Southbank beach pool in Brisbane.

Estimated to attract 100,000 visitors each year, the lagoon will be more than one metre in depth and feature a number of other play areas along a river-like attraction.

The new section of Robelle Domain

will also feature new lighting, landscaping, seating, barbecues, a water fountain, toilets and change rooms and a kiosk.





Councillor David Morrison looks over the buzzing Springfield Central.

Springfield region buzzing with a year of openings

New businesses, infrastructure and exciting new attractions, it's all happening in the region and residents have plenty to look forward to in 2015.

With a push on businesses and industry to move outside our state's capital and bring more jobs to regional centres, the completion of the new \$72 million GE Queensland Headquarters at Springfield Central is a great achievement for Ipswich.

GE has shown strong faith and support for the City of Ipswich with their new facility at Barry Alexander Drive, Springfield Central and staff relocated to their new headquarters last month.

The new GE building is located opposite the new Lagoon at Robelle Domain which is expected to be open

soon, with construction on the home stretch.

The new lagoon will become one of the biggest public lagoon-style pools in Australia and similar in size to the Southbank Lagoon.

Located just around the corner from GE and Robelle Domain is the University of Southern Queensland Springfield Central where Stage 1 construction of the \$45 million state-of-the-art flagship building is being completed.

The new five-star green-star rated building will serve as a dual-hub University and consolidate USQ Springfield Central as the primary higher education provider for the western corridor. Stage 2 is expected to be completed by June 2015.

As well as multi-million dollar buildings and world class water parks, Orion Springfield Central's major expansion is continuing, with works targeted for completion in December 2015.

The expansion will welcome Event Cinemas, Target and Coles to the centre, as well as 80 additional retailers, new landscaping and an improved pedestrian link to Robelle Domain, Springfield Central Train Station and USQ. One of the largest Bunnings Stores in Queensland and Mater Hospital also plan to open in Springfield Central before the end of 2015.



The new lagoon at Robelle Domain Parklands is scheduled to open soon.

Local Snapshots

FREE PLANTS AT THE MOBILE NURSERY

Ipswich residents are entitled to six free plants every financial year as part of council's Free Plant Program. Residents can collect their free plants from the Mobile Nursery when it visits the Camira/Springfield Community Centre on Saturday, March 7 from 8am until noon or until all plants have gone. Don't forget to bring along your rates notice. For more information contact the Division 1 office.

SHOW OFF IPSWICH TO YOUR FRIENDS

If your extended family and friends are visiting Ipswich during the Easter school holidays, show off our city and take a day trip to one of our fantastic local attractions or tours. From helicopter and hot air balloon rides, to the rail museum and wine trail, Ipswich has a lot to offer.

Visit www.discoveripswich.com.au for the latest upcoming events, markets, festivals and more.

ENJOY THE GOLDEN YEARS

Ipswich's seniors are welcome to come along to Golden Years. Held every Friday from 9.45am in the Humanities Building (56 South Street, Ipswich). Enjoy a social get together, music, laughs and a cuppa.

MOVIES IN THE PARK

Head to the new Brooking Parklands at 582 Ripley Road, Ripley from 6.30pm on March 21 for council's free Movies in the Park program. Bring the family along to enjoy a screening of the children's movie *Frozen*. Fearless optimist Anna teams up with rugged mountain man Kristoff and his loyal reindeer Sven in an epic journey to find Anna's sister Elsa, whose icy powers have trapped the kingdom in eternal winter. If cancelled owing to wet weather, the movie will be screened on March 28, 2015, same time, same place.



CR PAUL TULLY
DIVISION 2

It's amazing to think that it has been almost a quarter of a century since Australia was first connected to the internet.

Today the internet is a part of our everyday lives and it has become such an important tool to staying connected as a community.

As the internet has evolved, so too has the way we communicate with each other, especially through social media.

Communication is key when it comes to representing Division 2 and keeping residents in the loop with local events, news and council activities is an important part of my job.

I appreciate the community feedback regarding social media and enjoy the positive contributions.

You can follow me on Facebook.

Cr Paul Tully
Chairperson Planning and Development Committee

18 Queen Street
Goodna
T: (07) 3818 6900
F: (07) 3818 1099
E: ptully@ipswich.qld.gov.au
W: www.tully.org.au
f Cr Paul Tully

Division 2
Augustine Heights
Bellbird Park
Camira
Gailes
Goodna
Redbank

Access the Brisbane River at Goodna Boat Ramp

Wet a line or launch a boat at Goodna Boat Ramp off Brisbane Terrace with the popular spot an ideal place to relax and enjoy the Brisbane River all year round.

Located at the mouth of Woogaroo Creek adjacent to the Goodna and District Rugby League Club, the Goodna Boat Ramp is at the end of Noel Kelly Drive, where you will find plenty of keen fishers.

The boat ramp is well utilised for water skiing, boating, canoeing, kayaking and

fishing, there are also barbecue and picnic facilities.

Plenty of prawns and mud crabs have been captured around the boat ramp and the occasional dolphin has also been spotted.

Goodna Boat Ramp is one of the few boat ramps along the Brisbane River in the City of Ipswich and is part of the Brisbane River Canoe Trail. Travelling up the river visitors will see plenty of Jacaranda and Poinciana trees, and the entrance to the Bremer River.



Goodna Boat Ramp is a great spot for water sports, fishing and picnics.

Must Do Ipswich

Pan Pacific Peace Gardens a picture perfect place in Redbank

Nestled between the Ipswich Motorway and Ipswich railway line, Pan Pacific Peace Gardens at Redbank is a hidden treasure often overlooked by locals, but a paradise for lovers of flora and fauna.

Constructed to commemorate soldiers of World War II, Pan Pacific Peace Gardens features memorial plantings, pathways and boardwalks that wind through open space, wetlands and gardens.

With plenty of local plant species, the park is an oasis of colour and greenery. There are several lagoons where visitors can discover the delights of bird watching, as well as amenities, barbecue facilities, drinking water, disabled access, gazebos and rotunda, as well as picnic tables.

The park also features a chapel overlooking the main lagoon, making it the perfect spot for a garden wedding.

Whether you're looking for a quiet spot for a picnic, or some open kicking space, Pan Pacific Peace Gardens is a worth a visit.

Pan Pacific Peace Gardens are open from 7am to 7pm daily and access is via McAuliffe Street, Redbank.



Local Snapshots

GAILES/CAMIRA

From social cooking to playgroup, learning to sew or craft classes, the Gales Community House is a great community hub. Meet new people, take up a hobby and access support and vital services.

Visit

www.galescommunityhouse.com.au to find out more or get involved.

FRIENDLY FUN AT GOODNA BOWLS CLUB

Good times roll at Goodna Bowls Club, the only bowls clubs between Booval and Darra. The established club in Goodna is open for new and experienced players. With a friendly atmosphere and welcoming environment, the club has a range of great facilities for the Goodna community, including playing greens, function rooms, barbecue facilities and more.

Visit www.goodnabowlsclub.com.au and find out more about their competitive and social competitions.

TOWNHOUSE COMPLEX REVITALISES GAILES

A new 68-dwelling townhouse complex currently under construction on Old Logan Road, Gailes will include a mix of single detached and attached units as well as recreational space. The complex is part of the revitalisation of Gailes, with the site located opposite the Gailes shopping centre. The new site will be accessible via a new roundabout intersection with Old Logan Road and Julieanne Street.

JUST JUMP HAS BOUNCED INTO REDBANK

If you haven't 'jumped' onto this fun outing yet, head to the Redbank Collingwood Park Sports Complex to check out Just Jump, a fantastic energy filled trampoline jungle of adventure. As well as the trampolines there is a large indoor playground with jumping castles, cubby houses, cars, bikes, a mini roller coaster, building blocks, indoor rock climbing wall and more. There's even a café for mum and dad to relax and watch the kids bounce away all their energy. Just Jump is located at 235 Smiths Road, Redbank. www.justjumpqld.com.au



Augustine Heights and Bellbird Park take the lead on growth

Driving residential growth in the Division 2 region, Augustine Heights and Bellbird Park are two suburbs where exciting new estates are under construction.

Augustine Heights has seen rapid growth in the past couple of years and council has given the green light to expand the estate even further off Benezet Drive.

The 50 hectare site bounded by Augustine Heights residential estate to the north will be developed to house 125 new homes as well as a new park and barbecue facilities.

New residents will be able to choose from a range of different housing styles and sizes to meet their current and future needs, with lot sizes ranging from 390m² to 880m².

Previous stages of this residential development are already under construction with 352 lots across 14 stages. The combined developments will see 477 new homes in total which

is a massive boost to the area.

The new development is a welcome addition to the local area and will accommodate the strong growth predicted for Augustine Heights.

Bellbird Park's potential was first discovered with the construction of the Brentwood Forest Estate at the corner of Augusta Parkway and Jones Road.

Capturing buyer interest with Ipswich hitting a population boom, Brentwood Forest is estimated to provide more than 1500 new homes to the region once complete.

Owing to the popularity of Brentwood Forest in Bellbird Park, the State Government announced in 2013 a new high school would be constructed to cater to the growing region.

Stage 1 of the new high school is expected to be completed in January 2017, with stage two completed by January 2019.



Pan Pacific Peace Gardens is a hidden oasis in Redbank.



CR VICTOR ATTWOOD
DIVISION 3


The City of Ipswich is going to see a lot more growth over the coming years and a big portion of that is going to be in the Division 3 region.

Starting 2015 with a boost, the Collingwood Drive extension between Woodlinks Way and Redbank Plains Road opened to traffic and completion of the new intersection on Redbank Plains Road didn't take long to complete after that.

As a result we will see residential development popping up in the land surrounding the new road link.

It's going to be a great year for our city and I look forward to announcing new projects and welcoming new residents to the region.

Cr Victor Attwood
Deputy Mayor
Chairperson City Management and Finance Committee

Level 3 (external)
Redbank Plaza,
Collingwood Drive,
Redbank
T: (07) 3288 5899
F: (07) 3288 5877
E: vattwood@ipswich.qld.gov.au
 victor attwood

Division 3
Collingwood Park
Parts of Dinmore
New Chum
Redbank
Redbank Plains
Riverview

What's in a name – learn about street name history

If you have ever driven into a street or walked around your suburb wondering who or how street names were decided, there's a very simple way to find out.

Ipswich City Council maintains a database called the Names Register that records the reasons for naming of streets, suburbs, bridges and places. You might even discover a street had been named after an ancestor.

Most street names and places in Ipswich fall into the following categories:

Arts – Culture, Australian, Australian animals and birds, British statesmen, business and industry, early settlers, explorers and surveyors, Government association, historic house names,

Indigenous association, landscapes and physical forms, notable people, place names elsewhere, RAAF association, religious association, Royal association, Royal Australian Navy ships, sea and nautical themes, sportsmen and sportswomen.

Council's website has several brochures containing information about some of the city's place names.

Visit www.ipswich.qld.gov.au

You can also contact Ipswich City Council's Cultural Heritage Coordinator on 3810 6256.

Is there a street in Ipswich named after you?

Must Do Ipswich

Take a trip to yesteryear at Ipswich Historical Society

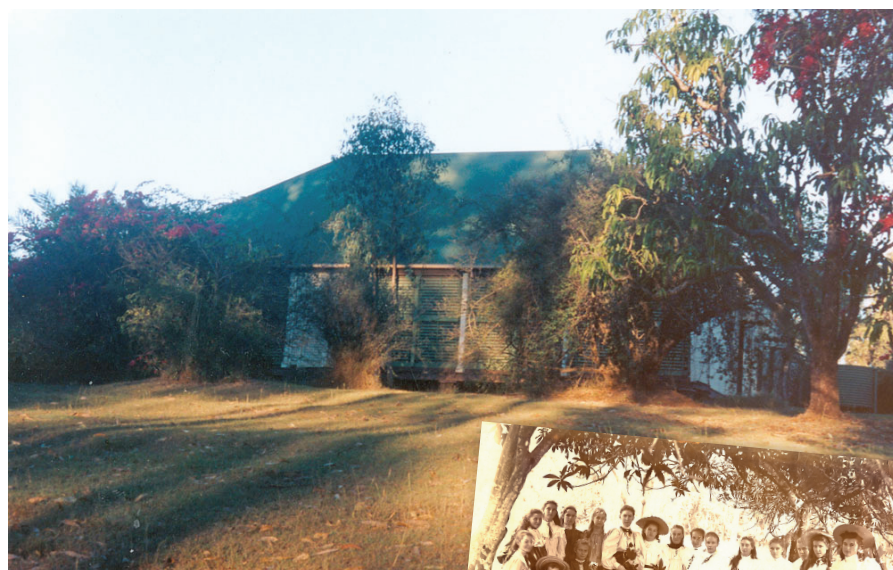
The City of Ipswich has an exciting history as one of Queensland's oldest provincial cities.

From our mining history, rail past and more, there is so much to learn about Ipswich and its people.

Founded in 1966, a trip to the Ipswich Historical Society at New Chum is a fantastic way to not only learn about the history of the city, but discover amazing facts about how people lived, where they worked and family life.

From old photos to artefacts and historical buildings, there's something interesting around every corner. A special Commemorating ANZAC exhibition will be on show at the Ipswich Historical Society between April 10 and May 8, with a display of items from the society's collections.

Ipswich Historical Society is located at 1041 Redbank Plains Road, New Chum.
www.ipswichhistoricalsociety.com



*Cooneana Homestead which was built between 1866 and 1884 for Samuel Pearson Welsby now forms part of the Ipswich Historical Society complex.
Insert: Ipswich Girls Grammar School students picnic at the homestead.*

Local Snapshots

COLLINGWOOD DRIVE OFFICIAL OPENING

Collingwood Drive extension between Woodlinks Way and Redbank Plains Road is open to the public. The \$6.5 million project has created a vital connection between Collingwood Park and Redbank Plains. To celebrate, an official opening of Collingwood Drive will be held in the near future. Plans are underway for a fun community based event. Look out for further information via a letterbox drop and on Councillor Victor Attwood's Facebook page.

SCHOOL HOLIDAYS AROUND THE CORNER

With the Easter long weekend and April school holiday period only a couple of weeks away, now is a great time to check out Ipswich City Council's exciting school holiday activities to keep the kids entertained. From the Ipswich Art Gallery's Children's Gallery, to the Library's extensive program, there's something for everyone. Visit www.ipswich.qld.gov.au to find out more.

FREE PLANTS AT THE MOBILE NURSERY

Ipswich residents are entitled to six free plants every financial year as part of council's Free Plant Program. Residents in Division 3 can collect their free plants from the Mobile Nursery when it visits Redbank Plains on June 27 between 8am and 11am. It will also be in Riverview on August 29. For more details as it gets closer, contact the Division 3 office.

GET TO KNOW YOUR NEIGHBOURHOOD WATCH GROUP

Neighbourhood Watch Riverview is a community based crime prevention program which aims to improve the quality of life within our neighbourhood by minimising preventable crime and promoting closer community ties. Neighbourhood Watch encourages individuals, families, businesses and communities to work together to reduce crime and improve community safety. For more information visit www.police.qld.gov.au/programs/nhwq or contact the Riverview Neighbourhood Watch via their Facebook page.



Councillor Victor Attwood and Mayor Paul Pisasale look over the new Collingwood Park residential area.

Collingwood Park driving population growth for Ipswich

Collingwood Park and Redbank Plains will drive much of the city's population growth, with new residential developments and a shopping centre expansion given the green light by Ipswich City Council.

Ipswich's population is projected to grow to more than 460,000 in less than 20 years and the completion of the Collingwood Drive extension has opened the area up for further development.

The \$6.5 million project to link Collingwood Drive with Redbank Plains Road was not only vitally important to reduce travel times, but created a connection between the two major hubs of Collingwood Park and Redbank Plains.

Woodlinks Village Estate is just one of the new residential communities to be constructed off Collingwood Drive in Collingwood Park.

Council has approved 333 new residential lots to be developed over 14 stages and stage 1 will include a new recreation park for the region. A cycleway, footpaths and local roads will also be constructed in the new estate.

Just around the corner of Mullins Street, Redbank Plains another

residential estate with a further 143 residential lots has also been approved by Ipswich City Council.

The estate is located near the Collingwood Drive extension and the nearby Redbank Plains Retail Centre which has also been approved for a major expansion that will quadruple the retail space.

Once completed, the Redbank Plains Retail Centre will increase from 5899m² to 27,926m² and consist of two new supermarkets, a discount department store, a new fast food outlet with drive through facilities, as well as a number of new specialty shops.

This exciting redevelopment will make the shopping centre two levels and be done in two stages.

Council will also be upgrading Redbank Plains Road to a four-lane divided carriageway to cater for the increased traffic flow coming in and out of the shopping centre.

New homes, parks, road upgrades, and a shopping centre redevelopment is just a couple of indicators of our city's population growth and it's exciting to see the region become a hive of activity.



CR BRUCE CASOS
DIVISION 4

Looking at the projects scheduled for Division 4 in 2015 highlights the diverse nature of council's role in providing facilities for our community.

We have on order exercise equipment to be installed in George Palmer Park at Silkstone, tenders have closed for supply of playground equipment in Keith Pennell Park at North Booval, while work on 860m of footpath in David Street linking Gledson Street with Fail Park will commence in coming weeks. This much anticipated link will also connect with existing pathways providing a pleasant walking experience along Bundamba Creek to Tite Family Park and through to the Bundamba Swim Centre on Brisbane Road.

Engineering assessment of roads in Division 4 recommended priority be given to reconstruction of Gomer Street and Videroni Street at Booval. These works have now been completed and similar works are to be undertaken in Wearne and Mill Streets improving the amenity for residents living in this part of our community.

Cr Bruce Casos
Chairperson Community and Customer Service Committee

2/38 South Station Road
Booval
T: (07) 3816 2444
F: (07) 3816 2466
E: bcasos@ipswich.qld.gov.au

Division 4
Blackstone
Booval
North Booval
Bundamba
Dinmore
Ebbw Vale
Riverview
Silkstone

Congratulations Australia Day Award recipients

The Ipswich Australia Day Awards recognise people in the community who go above and beyond.

Division 4 had five very deserving recipients. Congratulations to:

Audrey Dillon – A member of the Ipswich Genealogical Society for the past 17 years. Her passion, energy and love of family history have made the society what it is today.

Kenneth Grubb – Wrote and published *Coal Castle & Choirs: The story of Blackstone in Queensland* which provides insight into the suburb's historical beginnings.

Rebecca Langford – Special Education Teacher at Claremont Special School, Rebecca coordinated a team to participate in Light the Night to raise

funds for the Leukaemia Foundation.

Esther McCosh – The backbone of the Blackstone Welsh Church Sunday School, she has been the teacher for 30 years and has dedicated countless hours to the community.

Terry Carter – President of the Ipswich Men's Shed which was formed in January 2013 and now boasts 90 members. Terry and the committee have attributed countless hours of work and dedication to running the shed.

If you know someone in the community who has contributed in a significant way, please contact the Division 4 Office with your suggestions for the 2016 Ipswich Australia Day Awards.



Councillor Bruce Casos and Mayor Paul Pisasale congratulate Australia Day Medallion recipients.

Must Do Ipswich

Booval Oz Night Markets

Join the party at Booval every Saturday night from 5.30pm with the Oz Night Markets bringing great food, live music and plenty of entertainment to your weekend.

The Oz Night Markets is one of the largest international cuisine night markets in south east Queensland and features heaps of stalls for purchasing gifts, apparel and other unique goodies.

A visit to the Oz Night Markets is an exciting experience and encourages visitors to come with an open mind.

Visitors will first be tempted by cuisine from right across the globe, from a hearty burger, Persian treats or

Thai street food, the food stalls are a treasure trove of flavours waiting to be explored.

Live entertainment is the other highlight of this buzzing hub of international cuisine, fun and music with the Booval Oz Night Market Facebook page regularly updating visitors on upcoming performers.

If you're ready to join the Oz Night Market party, drop into the Booval Fair car park from 5.30pm every Saturday at 139 Brisbane Road or visit www.facebook.com/oznightmarket



Local Snapshots

FREE PLANTS AT THE MOBILE NURSERY

Following the success of the mobile nurseries last year where we saw an increase in the number of people accessing the program for the first time, we look forward to offering the following nurseries to you in 2015:

- George Palmer Park, Sealy St, Silkstone on March 21
- Jack Barkley Park, Gledson St, North Booval on September 12
- Hudson Park, Brisbane Rd, Ebbw Vale on October 17

Ipswich residents are entitled to six free plants every financial year as part of council's Free Plant Program. Division 4 residents can collect their free plants and catch up with Councillor Bruce Casas at one of the Mobile Nursery visits in 2015.

CHURCH PARADE TO HONOUR ANZAC CENTENARY

Bundamba ANZAC Observance Committee is planning a number of special events to acknowledge the Centenary of ANZAC. To start the special centenary year, an ecumenical church parade will be held at the Salvation Army Bundamba from 5pm on March 8. Residents are welcome to attend the parade to give thanks to those who served our country in years past.

VIKINGS CELEBRATE 80 YEARS

The Vikings Swimming Club recently celebrated its 80th anniversary with a special carnival at the Bundamba Swim Centre. The swimming club was first established in 1934 and is a family-friendly club that caters for swimmers of all abilities. The Bundamba Swim Centre is a great facility and the club meets Wednesday nights between October and Easter. Swimming is great for young children and people looking for a different form of exercise. Visit vikingswimmingclub.vpweb.com.au for more information or to sign up.



Councillor Bruce Casas looks at the remains of the historic Brynhyfryd Castle. Insert: Brynhyfryd Castle during its glory days.

Historical Brynhyfryd Castle site will form part of open space network

Sitting grandly atop Blackstone Hill, the historic Brynhyfryd Castle was a grand sight to see.

Although the castle is long gone, Ipswich City Council recently purchased the site of the former castle to be included as part of the city's open space network.

Consultation is now underway for the Blackstone Hill Master Plan, with the old Brynhyfryd Castle land identified as a strategic and important recreational, tourist and historical site.

The historic castle was owned by Welsh-born industrial coal miner Lewis Thomas.

Constructed in the late 1880s, Brynhyfryd (meaning 'pleasant hill' in Welsh) was built over three levels with a tower and included beautiful building materials including imported marble fireplaces and mantles, welsh slate for

floors and roofing and vast quantities of pine and cedar wood.

The grand castle's contents were sold off and the building demolished in the late 1930s owing to underground mining making the land unstable.

A large piece of urban bushland, Ipswich City Council purchased the site from Juxgold Group/Blackstone International Pty Ltd for \$1, who gifted the land to the city.

Council has been working with neighbouring land owners in the area and with the Blackstone Hill Master Plan External Reference Group, which includes representatives from mountain biking, bushwalking, mining, history, local residents, geology and the natural environment groups.

Careful consideration will now be undertaken to determine how the recreational park will be managed.



The Booval Oz Night Markets are a must visit.



CR HEATHER MORROW
DIVISION 5

We're already three months into the New Year and we have so many things in the pipeline for the City of Ipswich.

Division 5 is a unique part of Ipswich and I enjoy working with various community groups, sporting clubs, businesses and residents to improve facilities and provide quality services.

Council's job extends so much further than building roads, collecting rubbish and maintaining parks. We help boost tourism, provide social activities, seminars and services for our young people and seniors, attract businesses to our city, build on environmental initiatives and promote our city as a great place to visit.

I welcome community feedback and if there is something you would like to see happen in Ipswich, please drop into my office, give me a call or send an email.

Cr Heather Morrow
Chairperson Environment and Conservation Committee

Shop 1 Jacaranda Centre
Jacaranda St
East Ipswich
T: (07) 3281 8700
F: (07) 3281 8600
E: hmorrow@ipswich.qld.gov.au

Division 5

Barellan Point	Basin Pocket
Booval	Chuwar
East Ipswich	Karalee
Moores Pocket	North Booval
North Ipswich	North Tivoli
Tivoli	

New residential lots approved for Karalee

More families will be able to call Karalee home with Ipswich City Council approving 160 new residential lots, with the 72 hectare site to be developed over nine stages.

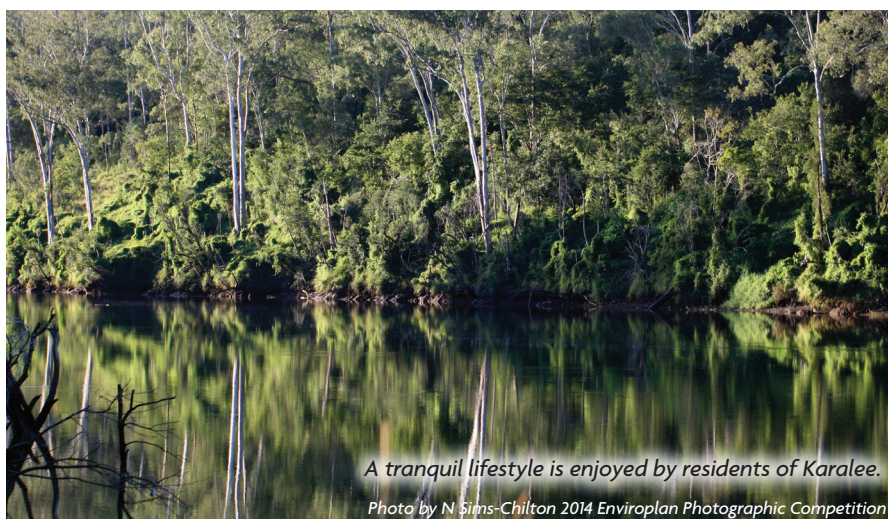
Karalee is well known for its large suburban lots and this new development will be keeping with the character of the area, with lots ranging in size from 2000m² to 6540m².

Beautiful homes on expansive blocks of land can be found all around Karalee. As well as new residential homes, this

new development will also consist of land adjoining the Brisbane River that will connect with Colleges Crossing and be used down the track as a new citywide waterside park.

Developers will also be required to rehabilitate the open space to a natural bushland setting and remove all declared and environmental weeds.

Residents considering moving to Karalee will love the open space and close-knit community.



A tranquil lifestyle is enjoyed by residents of Karalee.

Photo by N Sims-Chilton 2014 Enviroplan Photographic Competition

Must Do Ipswich

Tivoli Drive-In

In the 1970s drive-in theatres were everywhere across south east Queensland and although many have gone, a few remain including the Tivoli Drive-In in Chuwar.

Relive the experience of the days when you and your family relaxed under the night sky to watch thrilling movies at the local drive-in.

The drive-in movie experience is all about family and community coming together. There's no need for a babysitter, children can come in their pyjamas and go to sleep during the evening while you enjoy watching the latest blockbuster movie from the front seat.

Mattresses in ute trays, fold out camp chairs and bean bags are popular choices for lovers of the drive-in movies and best of all you can come

early for market stalls and community fun.

The Tivoli Drive-In is open every Saturday night. Gates open at 4pm, with the first movie screening at 7pm. Admission is only \$10 per car and there is also a café.

Visit www.tivolidrivein.com.au for more information.



Tivoli Drive-In is a great place to spend your Saturday night.

Photo courtesy of the Queensland Times.



More than 11,000 trees have been planted by 1000 volunteers in Ipswich.

Local Snapshots

VOLUNTEERS NEEDED TO HELP THE COMMUNITY

Ipswich Community Care Fund is looking to boost their volunteer numbers to help out at the Charity Shop located at the Kruger Shopping Village at Redbank Plains. This group do tremendous work raising much needed funds to help residents in need throughout the Ipswich community. If you have a few hours to spare please contact President Joy White on 3288 2856 to discuss further.

GRAB A COPY OF THE ENVIROPLAN CALENDAR

Each year Ipswich City Council runs an Enviroplan Photographic Competition and some of the best images are used to create the annual Enviroplan Calendar. The calendar and competition is an initiative that encourages residents to photograph the city's wildlife, waterways and natural bushland. Residents can pick up a copy of this year's calendar from council's customer service desk or divisional offices. Calendars are free.

PLASTIC BAG RECYCLING

While more people are switching to reusable cloth shopping bags, Australians still use nearly seven billion plastic bags every year. Plastic bags can take up to 1000 years to decompose as they break down into smaller pieces, and never fully leave the environment. Plastic bags can also be returned to your local supermarket for recycling but only three per cent are currently recycled. If you haven't made the switch to reusable bags, consider returning your plastic bags to your supermarket so they can be reused rather than dumped.

GET UP CLOSE WITH IPSWICH WILDLIFE

The City of Ipswich has a diverse range of wildlife owing to the wide range of habitats around the region. More than 1257 species of native plants have been identified in the region, along with 552 animal species. This includes mammals (60), reptiles (84), birds (248), fish (41), amphibians (29) and insects (90). You can get up close and personal with some of Ipswich's wildlife at the Ipswich Nature Centre in Queens Park. Entry is only a gold coin donation to help care for the animals.

Tree planting supports a healthier city

Waterways are improving and Bundamba Creek is healthier thanks to Ipswich City Council's Habitat Connections Program which has seen more than 11,000 trees planted by more than 1000 volunteers since March 2013.

The Habitat Connections Program has been two and a half solid years of rehabilitation action in the Bundamba Creek area.

In that time more than 800 community members have planted more than 7000 trees, which was boosted by a staff tree planting day late last year that pushed it to the 11,000 mark. Local schools, community groups and businesses have been part of this extraordinary effort, and their contribution has played a big part in the outcome of this successful project.

Improving riverbank vegetation is a critical element in improving the water quality of waterways, as well as improving local fauna levels. Habitat Connections used 12 native plant species specifically for their suitability for the area and capacity to stabilise the creek banks.

Habitat Connections concentrated on the rehabilitation of the riparian zones along Ironpot, Bundamba and Deebling Creeks, with projects designed to build ecosystem resilience, address storm water erosion and remove general rubbish and pest plant infestations.

Sites were also chosen for their ability to offer new nature-based recreation opportunities and provide a platform for increased community engagement with special tree planting events such as National Tree Day and Clean Up Australia Day.

Ipswich City Council is committed to conserving the city's natural environment and actively engaging people to get involved.

Habitat Connections combined environmental sustainability with nature-based recreation, while building important environmental partnerships with community and corporate groups.

To find out more about the program, and for information on other environmental initiatives in Ipswich, visit www.ipswich.qld.gov.au.



CR CHERYL BROMAGE
DIVISION 6

Ipswich born and raised I am very passionate about representing the needs of local residents, business and community groups.

Division 6 encompasses Brassall, Leichhardt, part of North Ipswich, part of Tivoli, part of Karrabin and part of Wulkuraka. Our region has so many hard working community groups who go above and beyond to help others.

I enjoy being an active member of a number of groups, and the work of many community groups would not be possible without volunteers and others who donate to the cause.

There is much to be proud of in Ipswich but what stands out more than anything is the generosity, care and compassion of our residents.

Cr Cheryl Bromage
Chairperson City Infrastructure
Committee

Shop 38A Brassall Shopping Centre
68 Hunter St
Brassall
T: (07) 3810 6556
F: (07) 3813 0655
E: cbromage@ipswich.qld.gov.au

Division 6

Brassall
Karrabin
Leichhardt
North Ipswich
Raymonds Hill
Tivoli
Wulkuraka

Pedal power best way to get around Ipswich

Whether it's to improve your fitness, bank balance or an environmental choice, taking up cycling could be one of the best decisions you make.

Brassall Bikeway is a dedicated off-road facility which links to the Wulkuraka Railway Station. The high quality bikeway connection runs between the Ipswich city centre, North Ipswich and Brassall.

There is a priority road crossing at Grace Street, Wulkuraka which gives cyclists right of way.

Part of the south east Queensland Principle Cycle Network, the Brassall

bikeway is three metres wide and fully lit along its length for good visibility at night.

Brassall Bikeway is aligned with part of the first railway line built in Queensland. The bikeway highlights special aspects of Ipswich's rich history, including a public artwork sculpture along the route.

As well as providing an easy and safe transport corridor for residents commuting around Ipswich, the Brassall Bikeway is a great facility for people wishing to get outdoors, get active and explore their local neighbourhood.



Cycling the Brassall Bikeway is a great way to explore your local community.

Must Do Ipswich

All aboard The Workshops Rail Museum

A visit to Ipswich just isn't complete without a trip to the multi-award winning The Workshops Rail Museum at North Ipswich where railway history comes to life.

Located at Australia's oldest railway workshops still in operation, there's plenty to be discovered.

Step inside the heritage railway workshop and see it in operation, just as it has been for over 140 years. See genuine restoration of the heritage steam train fleet up close and hear living history from railway workers.

From hands on exhibits, multi-media encounters, colourful stories and huge steam locomotives, there's 15 large exhibits where you can learn about the impact rail had on Ipswich and its importance then and now.

Explore restored carriages, the largest model railway of Queensland, and Australia's oldest working steam locomotive.

You can even book to take a ride on the steam train.

The Workshops Rail Museum is open daily from 9.30am to 4pm.

Visit www.theworkshops.qm.qld.gov.au for more information.

See exciting rail history at the Workshops Rail Museum.



Local Snapshots

CHAT TIME WITH CR BROMAGE

Residents are invited to a Chat Time session with Councillor Cheryl Bromage from 9am on March 14 at Harvey Norman Ipswich. Come along and share your ideas on how you think we can continue to create and develop our city into a place we are proud to call home. For more information, call the Division 6 office or council on (07) 3810 6666.

FREE MOVIES IN THE PARK

Come along and enjoy council's free Movies in the Park from 6.30pm on April 11 at Sutton Park. Families can bring along their picnic chairs and rugs and relax under the stars watching the LEGO Movie. The LEGO Movie tells the story of ordinary LEGO minifigure, Emmett, mistakenly thought to be the extraordinary Master Builder, he is recruited to join a quest to stop the evil LEGO tyrant Mr President Business. If cancelled owing to wet weather, the movie will be screened on April 18, same time, same place.

PUBLIC ARTWORK AROUND IPSWICH

Did you know the City of Ipswich has numerous public artworks that have been installed across the region to enliven our public spaces, document our past and reflect our cultural aspirations. Artworks are installed for everyone to enjoy! If you would like to check out some of the works, there's a list of locations on council's website.

TAKE A STROLL THROUGH IPSWICH'S OPEN SPACES

If you're looking for an invigorating walk or leisurely stroll through some bushland, look no further than Ipswich and its outer regions. From creeks to quarries, to peaks and spacious picnic areas, our recreation and nature reserves have some fantastic walking trails ready to explore. Drop into the Ipswich Visitor Information Centre in Queens Park to grab a bushwalking brochure or download a copy from the Discover Ipswich website www.discoveripswich.com.au



Council will be developing a Strategic Masterplan to improve open space networks.

New Strategic Master Plan for Division 6 open space

The City of Ipswich has a diverse open space network, from parks and reserves to streetscapes and bikeways.

Council is committed to ensuring our open space network meets the community's needs now and into the future. To do this, council is developing a Strategic Masterplan to assess open space and streetscapes to create a plan which will help future planning, development and management of Ipswich's open space.

Council will be seeking feedback from residents as part of the development of the Strategic Masterplan.

Areas being looked at in this Strategic Masterplan include North Ipswich, Brassall, Tivoli, Karrabin, Blacksoil, Wulkuraka and Leichhardt.

The Strategic Masterplan will aim to address how the community uses open space, how parks and streetscapes encourage more people to walk to parks, schools, shops or other community facilities and how our public streets and parks can be improved.

Focus areas will include:

Community open space needs –

From parks and reserves to utility land and bikeways, it's important to understand how the community currently uses and would like to use open space in the future.

Ironpot Creek corridor – Planning is necessary to improve and protect this waterway. Ironpot Creek will be looked at closely to understand how this corridor can be rehabilitated and where public open space can be developed.

Streetscapes – An important part of the city's open space network, streetscapes provide a corridor for transport, active transport (walking, cycling) as well as amenities for communities.

Schools and other facilities –

Schools and community facilities are important places that people regularly commute to and this project aims to increase active transport to our schools and other facilities.

For more information or to take part in the online questionnaire, visit www.ipswich.qld.gov.au





CR ANDREW ANTONIOLLI
DIVISION 7

Representing the residents of Division 7, my priority will always be focused on meeting people's needs, providing a safe environment and ensuring council goes above and beyond the mark of expectation.

Division 7 encompasses the central area of Ipswich, including Ipswich Central and also covers Coalfalls, Sadliers Crossing, West Ipswich, Woodend, Ipswich, Newtown, Booval, Eastern Heights, Silkstone and Raceview.

There's so much to be excited about in 2015 with the Ipswich Festival just around the corner and plenty of activities planned for our Art Gallery, Civic Centre and Studio 188. Entertainment has never been better in Ipswich and I encourage everyone to get a copy of our entertainment guide from the Customer Service Centre and make the most of what our city has to offer.

Cr Andrew Antonioli
Chairperson Health and
Community Safety Committee

Level 1, 143 Brisbane Street
Ipswich

T: (07) 3810 6224

F: (07) 3432 5656

E: aantonioli@ipswich.qld.gov.au

f Andrew Antonioli - Ipswich Councillor

Division 7

Coalfalls

Booval

Eastern Heights

Ipswich

Newtown

Raceview

Sadliers Crossing

Silkstone

West Ipswich

Woodend

Ipswich Parkrun celebrates its 1st birthday

Parkrun is a concept that has taken off all over the world to improve fitness and create a free, fun social event that tracks your running improvement each week.

The free weekly five kilometre timed runs are open to everyone and are safe and easy to participate in.

Ipswich Parkrun recently celebrated its first birthday on the romantic date of Valentine's Day, February 14.

Ipswich Parkrun meets 7am every Saturday at Bill Paterson Oval and

averages 100 runners per week, which is a fantastic initiative for residents wanting to achieve a more active, healthy lifestyle.

There are now over 100 Parkrun locations around the country. Residents wishing to take part can visit www.parkrun.com.au/ipswichqld to register.

For residents there is another Parkrun at Augustine Heights that starts at Renahan Place.



Ipswich Parkrun participants celebrate their 1st Birthday.

Must Do Ipswich

Culinary delights will leave your tastebuds singing

What was once Ipswich's hidden secret, Top of Town's reputation as a haven for great dining options, smooth coffee and entertainment has taken off, with people from all corners of south east Queensland making the trip to Ipswich's heart.

The bustling corner of Ipswich Central is not going to fade away anytime soon with a new micro-brewery and restaurant bringing in new crowds excited to taste some local-brew.

Pumpyard Bar and Brewery at 88 Limestone Street is the first brewery in Ipswich since 1903 and visitors will be able to see the process and taste the product all in the one location.

When it comes to quirky cafes in Top of Town, it's hard to go past Fourthchild on Brisbane Street which changed owners just last year. From personable service to a palate pleasing menu, Fourthchild aims to offer something different.

From Italian to Indian cuisine, delightful pub meals and café treats, Top of Town is full of culinary surprises.





Ipswich Mayor Paul Pisasale and Councillor Andrew Antonioli thank local police for their commitment to the Ipswich Central Public Safety Strategy.

Local Snapshots

LED LIGHTS FOR QUEENS PARK

Queens Park has received a special makeover, with council upgrading the park's lighting with 53 new LED lights. The upgrades are part of the Clean Technology Innovation Program and installation was completed in late January. The new addition will improve lighting in the park and the location and brightness of the LED lights can be controlled remotely if more or less lighting is required in a particular area at any time.

DATE SET FOR FESTIVAL FIREWORKS

This year's Ipswich Festival is on from April 16 to May 3. This year Fireworks on the Bremer River will be on April 16 to kick off the festival fun, with the best viewing area from Riverlink Shopping Centre. Some other key dates will be the Global Fiesta on April 18 in Queens Park and the Jazz, Wine and Blues on April 25 in Queens Park. Visit www.ipswichfestival.com.au for the full schedule of events.

IPSWICH FESTIVAL PARADE BECOMES TWILIGHT EVENT

One of the highlights of the Ipswich Festival every year is the Ipswich Festival Parade, our city's biggest annual celebration. The parade encourages significant community participation as a celebration of the true essence of 'community'. This year's Ipswich Festival Parade will be held from 6pm on May 2. The parade route will move from Darling Street into Waghorn Street, Brisbane Street, Bell Street, Bremer Street and back to Ellenborough Street. To join in the parade, visit the Ipswich Festival website for an application form.

RESPONSIBLE PET OWNERSHIP HAS ITS REWARDS

Pets are very important members of the family and while having a pet is fun, it is also a major responsibility. Pet registration not only helps reunite you with a lost pet but can also bring great savings. Council's registration rewards program provides owners with up to \$2000 in savings from local pet suppliers and veterinarians. Visit www.ipswich.qld.gov.au/residents/animal for more information.

Public safety strategy curbs antisocial behaviour in CBD

A joint initiative between Ipswich City Council and the Queensland Police Service has netted tremendous results in reducing anti-social behaviour in the Ipswich Mall precinct.

The Ipswich Central Public Safety Strategy was put in place in December 2014 following a spate of offences and antisocial behaviour in the Mall.

An important retail and business hub, the Ipswich Mall is an area where the community should feel comfortable and able to go about their everyday routine.

Ipswich Police now use iPads to view live footage from Ipswich City Council's Safe City camera network and have run joint patrols with security officers to enforce local laws and deter antisocial behaviour.

The Public Safety Strategy has sent a clear message to potential trouble makers and since it began, police have taken a zero tolerance approach to offenders in the area.

During the December-January school holiday period, 66 hours of joint patrols were conducted, as well as 128 hours of security patrols.

The security officer patrols were deployed to actively target antisocial behaviour and local law breaches.

Joint patrols resulted in 165 persons being spoken to regarding behaviour and offences including breaches of local laws, and 20 people were issued infringement notices for smoking offences.

Cr Antonioli thanked the Queensland Police Service and local officers for the commitment to the new Public Safety Strategy and said the high visibility patrols had achieved good results.

The Ipswich Central Public Safety Strategy will continue to operate as part of a joint commitment to keep the Ipswich CBD and Mall a safe place for members of the community to visit and work.



Top of Town's eateries will tantalise the tastebuds. Pumpyard owner Wade Curtis and Ipswich Mayor Paul Pisasale look over the brewery.



CR CHARLIE PISASALE
DIVISION 8

Welcome to 2015 and all our new Division 8 residents who have moved to the region.

There are many great things happening not only in our Division but throughout our great city this year.

Celebrating its 40th anniversary this year, the Ipswich Civic Centre is Ipswich's top class performing arts facility, attracting shows from around the world!

Grab your copy of the latest Best Seat in the House Program from any council office to ensure you don't miss out on the great line up of shows we have planned for 2015.

Please remember we welcome your enquiries, concerns, feedback and input at the Division 8 office and appreciate your efforts in working together towards a healthy and safer community.

Cr Charlie Pisasale
Chairperson Arts, Community
and Cultural Services Committee

Cnr Samford & Toongarra Roads
Leichhardt

T: (07) 3282 9600

F: (07) 3282 9622

E: cpisasale@ipswich.qld.gov.au

f Charlie Pisasale

@charliepisasale

Division 8

Churchill
Eastern Heights
Ipswich
One Mile
Ripley
Yamanto

Deebing Heights
Flinders View
Leichhardt
Raceview
South Ripley

New sign for Ipswich Touch Football Association

Played by more than one million people across the country, touch football is one of the fastest and most competitive sports going in Australia.

Division 8 Councillor Charlie Pisasale recently donated a new sign to the Ipswich Touch Football Association which is located at Jim Finimore Oval in Leichhardt and has a history dating back to 1973.

Ipswich Touch Association is affiliated through Touch Football Australia and players have gone on to represent South West Queensland, Queensland and Australia.

With quality players, referees, coaches and support structure, Ipswich Touch Football has dedicated men, women, mixed and junior competitions that can be played at a social or competitive level.

If you're looking for a fast-paced, exciting new sport to get your heart pumping, touch football is the sport for you. It's the fastest sport going with no break-down of play and playing nights are Mondays, Tuesdays and Wednesdays.

Visit www.ipswichtouch.com for more information.



Must Do Ipswich

Great golfing and fine wines at the Ipswich Golf Club

Positioned in Leichhardt with views of the nearby mountain ranges, the Ipswich Golf Club is an 18-hole golf course with a history dating back to 1897. The modernised facility was designed by Wayne Grady and features a challenging layout.

Located on 54-hectares, the par-72 championship course is complimented by a clubhouse with a pro shop, change room with showers and lockers, bar, bistro, commercial kitchen, 58 poker machines and a function room for 120.

Originally member-owned, The Ipswich Golf Club is now owned by Sirromet Wines founder and owner Terry Morris in partnership with Dean Merrell, who purchased the club after it was placed into receivership in June 2013.

Since then the Ipswich Golf Club has grown in popularity and as well as being a challenging course for golfers, the bar is complimented with an array of Sirromet Wines.

If you love your golf or are looking for a top venue to catch up with friends for a meal, the Ipswich Golf Club is a great facility and is located off Samford Road, Leichhardt.

www.ipswichgolf.org.au



Local Snapshots

IMPROVED STREET LIGHTS FOR RACEVIEW

Sonter and Cross Streets in Raceview have recently been upgraded with additional street lighting. These new lights will assist with improving night visibility, general illumination of the street and overall safety for residents in the area.

ANZAC DAY SERVICE

Residents are invited to attend the West Ipswich One Mile ANZAC Day service at 9.30am on April 25. The service is held at the War Memorial in Leichhardt Park on Old Toowoomba Road at One Mile. More than 500 people attended the 2014 service, with numbers growing each year. Morning tea will be provided at the Leichhardt One Mile Community Centre following the service. This year marks the 10th ANZAC day service held at this War Memorial.

NEW FOOTPATH COMPLETE

Construction of a new footpath from Kingston Drive to Ripley Road in Flinders View has been completed. The new footpath connects with the nearby Sir Llew Edwards Park and completes the missing link to Ripley Road.

MOVIES IN THE PARK - FROZEN

We can't 'Let it Go' because Disney's hit children's movie Frozen will be screening at Ipswich City Council's next Movies in the Park at Brooking Parklands on March 21. Brooking Parklands is in the new Ripley Valley estate and the free movie is on from 6.30pm. Bring the family, grab a picnic rug and enjoy this fantastic free family event.

EXTERNAL COUNCIL MEETINGS

Ipswich City Council's next External Council Meeting will be held on Tuesday, March 24 in Rosewood. Each year council hosts two external meetings to offer the community an opportunity to attend a meeting in their local area. Visit www.ipswich.qld.gov.au for more information.



Believe it or not, Ripley development is running hot

Ripley is growing at an exciting pace with the development of new residential estates struggling to keep up with the demand.

Located only 15 minutes drive from Ipswich CBD, Ripley has been identified as a key development to meet residential growth in Queensland's south east.

The City of Ipswich is recognised as one of the largest industry growth areas in Australia and the residential growth in Ripley will more than double the city's population and absorb 10 per cent of south east Queensland's predicted growth.

AMEX Corporation's Providence and Sekisui House's Ecco Ripley were the first developers off the mark with the south Ipswich suburb set to house 120,000 people in 50,000 dwellings when fully developed.

One of the most recent residential developments approved by Ipswich City Council is an estate off Montereia Road that will include lots for residential homes, townhouse units and a major neighbourhood shopping centre.

The new residential community is part of the overall plan for the region, with 439 residential lots, plus local roads to be developed over 16 stages.

As part of the development, land had been identified for a future townhouse site, with another future stage including a major shopping centre to service that community.

Plans also include a recreation park and land has also been allocated for a future sports park.

What was once open paddocks, the Ripley region is fast developing into the next big residential community for Ipswich.





CR SHEILA IRELAND
DIVISION 9

Happy New Year to all residents of Division 9 and special congratulations to all our worthy Division 9 nominees of the Ipswich Australia Day Awards which were held recently.

I would like to congratulate the new members of the Ipswich Youth Advisory Council who were sworn in on February 3. I look forward to seeing your hard work make a positive difference to the youth of our city.

Thank you also to residents for their patience as council caught up with mowing. Our team has been working hard since Christmas to get the parks and walkways mowed following the heavy rain over the holidays.

If you have any concerns regarding anything in Division 9, please phone my office and we will attempt to have it rectified as soon as possible. I look forward to working hard for Ipswich and Division 9 residents for another year.

Cr Sheila Ireland
Chairperson Youth and Seniors
Committee

Shop 36
Raceview Shopping Centre
64 Raceview St
Raceview
T: (07) 3810 6231
F: (07) 3294 3006
E: sireland@ipswich.qld.gov.au

Division 9
Flinders View Spring Mountain
Raceview Springfield Lakes
Redbank Plains Swanbank
Ripley White Rock

Parents encouraged to practice safe parking around schools

Children are important and now school is back it is time to remember our parking responsibilities.

There was a lot of illegal parking around some schools during 2014 that caused some angst between parents, schools and council. School principals have had to call council to patrol around all schools in Division 9 during the past year to make sure students arriving and leaving school did so safely.

Following discussions between school principals and council's traffic management team, there have been a number of changes to parking regulations during the school holidays in an attempt to make it easier for parents during drop off and pick up times.

All parents are encouraged to make note of the changes that may have occurred around your school and obey the rules so council does not have to issue infringement notices. While it is difficult to provide more parking at schools, the process of pick up and drop off is made much simpler if all drivers follow the rules.

Do not park in Bus Zones, do not park on road reserves, do not park for any length of time in drop off zones, do not park on footpaths, if we all abide by these rules 2015 will be a great year. Please be courteous to all other parents as you are all there for the same reason to collect your children safely.



Parents are encouraged to follow new parking regulations around schools.

Must Do Ipswich

Hike through trails at White Rock Spring Mountain

Stretching across 2500 hectares, White Rock Spring Mountain Conservation Estate is one of Ipswich's most popular destinations for hiking, horse riding and mountain bike riding.

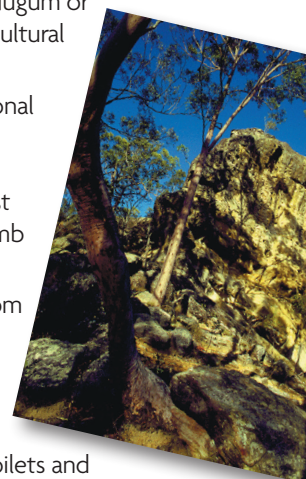
Featuring rocky outcrops and regionally significant bushland, White Rock Spring Mountain contains 624 flora and 159 fauna species as well as habitat for five threatened flora and three fauna species.

The Redbank/Goodna area is an important centre for Indigenous people and White Rock is a place of high cultural significance. It is an important women's area for local Ugarapul people

and is referred to as Nugum or Boogun and forms a cultural landscape.

When visiting, Traditional Owners request their cultural beliefs are respected and to resist the temptation to climb White Rock.

Open from 6am to 6pm daily, White Rock has horse float parking, picnic facilities, seating, gazebos and rotunda, public toilets and disabled access.



Local Snapshots

REGISTER FOR AGEING STRONGER ACTIVE LONGER

Residents are invited to register for Ageing Stronger Active Longer, a program that helps seniors learn about nutrition and experience a variety of physical activities. Run by council in partnership with Able Australia, the program runs until March 27. Residents wishing to register for the program can call Karri Browne on 3810 6646.

BOOK NOW FOR AN OLD SLOUCH HAT

Take a trip down memory lane and relive songs from the war years to celebrate the 70th anniversary of Victory in the Pacific and the ANZAC Centenary. An Old Slouch Hat is on at the Ipswich Civic Centre on April 21 and features the talented Ipswich Seniors Concert Group in song, dance and comedy. Bookings are essential and can be made by phoning the Ipswich Civic Centre on 3810 6100 or in person at the Customer Service Centre, 143 Brisbane Street, Ipswich.

JOIN THE SPRINGFIELD SPARKLERS

Springfield Sparklers are a very effervescent group of ladies who like to perform dance and comedy items for charity functions. They are looking for new members with the same interest and passion for fun. For more information or to join phone Christine on 3470 5213 or 0414 451 438.

GET ON YA BIKE THESE SCHOOL HOLIDAYS

Ipswich's young riders can get involved in a special bicycle safety program during the 2015 Easter school holidays. On Ya Bike will promote road and bike safety and encourage young people to be active. Program dates and locations are: Sutton Park at Brassall on April 7, 9, 13 and 15 and Grande Park at Springfield Lakes on April 8, 14 and 16.



Construction begins on new Six Mile Creek Bridge

A new bridge to improve flood immunity to Ipswich's eastern suburbs is underway, with major works on a new Six Mile Creek Bridge on Redbank Plains Road.

Redbank Plains Road is a vital carriageway connecting Ipswich's eastern suburbs to the rest of the city. Council has allocated \$6.5 million for the design and construction of the project and work began on the site in late February.

Two spans measuring 25 metres each will traverse the Six Mile Creek Crossing, providing better access even in times of heavy rain. The structure will be built to Q20 standards to help minimise road closures owing to flooding.

The project will include earthworks and landscaping and tie into the Collingwood Drive project which was recently completed.

There will also be 500 metres of new road, bridge, new street lighting, the relocation of a number of essential services and access into the neighbouring sports fields.

Council has designed a temporary road to minimise disruptions during the bridge construction period.

Upon completion of the Six Mile Creek Bridge, residents travelling regularly on Redbank Plains Road will be less inconvenienced by significant rain events and flooding.





CR DAVID PAHLKE
DIVISION 10

Welcome to the fifth edition of the revitalised Ipswich Connect magazine. Division 10 covers 70 per cent of the area from Grandchester to Pine Mountain and Willowbank.

More than 16,000 residents are under my guardianship as their local Councillor, representing their needs.

I also chair the Tourism and Libraries portfolios. Let me quickly share some tourism gems with you. Did you know that Ipswich has a link to Mary Poppins and James Bond?

The second largest wooden church in the southern hemisphere is in Rosewood, and we have the only Lovers Lane in Queensland. There's also the Cobb and Co Coach in Rosewood, Babies of Walloon, Willowbank Racing precinct, Grandchester Model Steamers, Rosewood Railway museum and much more.

Cr David Pahlke
Chairperson Tourism and Libraries Committee

22

Shop 5 & 6
20-22 John St, Rosewood
T: (07) 5464 1088
F: (07) 5464 1008
E: dpahlke@ipswich.qld.gov.au

Division 10

Amberley	Ashwell	Blacksoil
Calvert	Ebenezer	Goolman
Grandchester	Haigslea	Ironbark
Jeebopilly	Lanefield	Lower Mt Walker
Marburg	Mt Forbes	Mt Marrow
Mt Mort	Pine Mountain	Purga
Rosewood	Tallegalla	Thagoona
The Bluff	Walloon	Willowbank
Woolshed	and part of Karrabin,	
Mt Walker West,	Muirlea,	Mutdapilly,
Peak Crossing,	South Ripley	and Yamanto

New Garden of Reflection highlights drowning prevention

A new garden of reflection to highlight drowning awareness and prevention has been officially opened at Henry Lawson Bicentennial Park in Walloon.

The new addition complements the nearby Babies of Walloon sculpture, inspired by the Henry Lawson poem which tells the story of two young girls who drowned at a nearby billabong.

Families already use the area as a place for grieving and reflection by child drowning prevention charity Hannah's Foundation.

Hannah's Foundation Chairman Andrew

Plint and his wife Katherine were closely involved in the design of the Garden of Reflection, which is a place of peace and tranquillity that welcomes every family who has lost a child.

Parents and family members can visit the Garden of Reflection together to help support one another and keep the memories of a lost child alive in their hearts.

The official opening and special balloon release coincided with the National Drowning Prevention Awareness and Memorial Day.



Must Do Ipswich

Take a romantic stroll down Lovers Lane

Queensland's only official Lovers Lane located on the Brisbane Valley Highway at Ironbark is a symbolic stopping point for young lovers and couples with a penchant for romance.

A new sign highlighting the history behind the special monument to love was recently installed by Ipswich City Council.

The site is believed to be the only official Lovers Lane in Queensland and regularly attracts the attention of people passing by and on Valentine's Day attracts lovers of all ages to the spot to often renew their vows.

Anecdotal evidence exists that record the road being named Lovers Lane since the 1960s when the rural road was under Moreton Shire Council.

Ipswich City Council has installed a special bus shelter, garden bed and symbolic heart to mark the romantic spot. A Lovers Lane street sign has

also been installed. It has been stolen on several occasions so a new sign has been welded in place.

Residents can purchase a Lovers Lane street sign from council as a special memento. Phone 3810 6666.

Cr Pahlke visits Lovers Lane with two little sweethearts Sierra Kanofski and Alex Moore.



Local Snapshots



Cr David Pahlke is joined by Koby Slater and Honey, Helen Slater and Stormy, Amanda and Levi Dawson with Rizzo and Jonathan and Melanie Dunlop with Charlie and Meg to test out the new agility equipment.

PROJECTS COMPLETED/ UNDERWAY OR TO COME

- Walloon K&C Bell/Kingsley/Kinmoth \$2.5 million
- Rosewood Cobb and Co Jailhouse/Bottle Tree \$120,000
- Babies of Walloon Grieving Point \$40,000
- Marburg Black Snake Creek landscaping and walkway \$600,000
- Walloon Henry Lawson Park ALARA disability plays space and shade \$120,000
- Willowbank Heit Park landscaping and seating \$30,000
- Marburg Community Park two areas \$60,000
- Thagoona Soccer Club canteen \$100,000
- Yamanto Bremerdale Park improvements \$37,000
- Yamanto Tulip Street BMX track \$40,000
- Grandchester/Calvert drainage study \$50,000
- Marburg SES retaining wall \$40,000
- Rosewood Drovers Dog Park \$20,000
- Rosewood Equestrian Centre toilets \$20,000

VOLUNTEERING WITH COUNCIL

Ipswich City Council has volunteers that give their time to help others and boost local services. If you're interested, some of the volunteer groups include the Friends of the Ipswich Library Service (FOILS) 3810 6761, Ipswich Art Gallery volunteers 3810 7235, Queens Park volunteers, Visitor Information Centre volunteers and many more. Visit www.ipswich.qld.gov.au to find other groups and details on how to join.

HOME OCCUPATION FOR BUSINESS AND INDUSTRY

Landowners are reminded that town planning approvals are often required for many activities that are carried out in Ipswich. This includes approvals for the parking of heavy vehicles, truck deposits and any home business that generates amenity and traffic issues. If you are purchasing a block, always check the zoning and ability to carry out a particular business with council. If you need assistance, call the Division 10 office to arrange an appointment.

AVOIDING CONFLICT WITH NEIGHBOURS

Residents can access two State Government Justice Department brochures at the Division 10 office regarding neighborhood conflict. The brochures are Avoiding conflict with your neighbours about fences and trees and Tips on how to manage conflict. Copies can also be posted if needed by contacting the Division 10 office.

New dog park is barking up the right tree

Every dog has its day and Rosewood dogs and their owners can now enjoy some extra fun days with installation of new agility equipment in the off leash Drover's Dog Park.

Located in Tom Lenihan Park on Bennett Street, the new equipment includes a hoop, tunnel, a podium, a number of jumps and a series of weave poles.

Drover's Dog Park is extremely popular with local residents and the new equipment was installed to enhance the facilities for local dog lovers.

Off leash dog parks are not only a spot for dog owners to enjoy some special time with their animals, but it provides a safe place for dogs to stretch their legs and socialise with other dogs.

Spending time at dog parks have been proven to deliver both social and wellbeing benefits for both dogs and their owners, with people striking friendships with other likeminded people.

Rosewood's off leash dog park was named Drover's Dog Park in honour of Australian political identity Bill Hayden.

Mr Hayden, a former politician and Governor General, used the quick quip that a drover's dog could win the next election when he stepped down from the leadership of the Australian Labor Party in 1983.

In August 2013 Mr Hayden and his wife Dallas Hayden officially opened the Drover's Dog Park, along with a series of interpretative signs featuring information on the Dog on the Tuckerbox, Red Dog, Cattle Dogs and the Australian Kelpie. The signs also contain details about Mr Hayden and his political life.

As well as Drover's Dog Park, Tom Lenihan Park also features a playground, seating, picnic shelter and skate park.

Plans are also in place to install additional landscaping in the park in the coming months.

Dogs visiting the park must be on a leash until they are inside the boundary of the leash-free area. When in the leash-free area, the dog must still be under verbal control of the owner.

Meet your local Councillor

Saturday, March 7

- 8.30am Marburg Community Centre
- 9.30am Haigslea State School
- 10.15am Pine Mountain Hall
- 11am Willowbank Shops

Sunday, March 8

- 8.30am Grandchester Hotel
- 9.15am Thagoona Railway Station
- 9.45am Walloon Shops
- 10.15am Yamanto – Cnr Goddards and Berry Sts
- 10.45am Yamanto Sarah Drive Park



Contact Us



3810 6666 or
1300 IPSWICH (4779424)



council@ipswich.qld.gov.au



PO Box 191,
Ipswich, 4305

Follow Us



ipswichcitycouncil



@IpswichCouncil

Ipswich named in global Top 7 intelligent communities

The City of Ipswich has been named as one of the world's Top 7 most Intelligent Communities for 2015 by the Intelligent Community Forum (ICF) in New York.

Describing the Top 7 communities as 'revolutionary' in their own way, the ICF says each city had planned its future in a way that was consistent with its cultural identity, while using universally available digital tools and broadband technology.

Ipswich had been recognised previously by ICF as a global leader, first in 2011 when the city was named in the top 21 intelligent communities.

ICF judges said Ipswich was chosen owing to the Digital Hub project and Digital Enterprise program which teach residents and businesses digital skills, while at the same time Ipswich had

started major redevelopment of the city centre.

Ipswich Mayor Paul Pisasale credited the city's forward thinking in the mid 1990s with the creation of the first local government owned Internet Service Provider in Global Info Links that paved the way for the city being at the cutting edge of technology today.

Another example of forward thinking was the Polaris Data Centre, born out of the vision of the Ipswich Community Plan i2031.

The Intelligent Community Forum Awards Program concludes in Toronto in June 2015 during the ICF Annual Summit, where one of the Top 7 Intelligent Communities will be named 2015 Intelligent Community of the Year.

Important rates dates

April to June 2015

Issue Date: 20 April

Due Date: 20 May

You can pay your rates at the Ipswich City Council Customer Service Centre in the Ipswich Mall, at the post office, by cheque or through B-Pay.



Ipswich pride pins and special milestone certificates can be requested at councillors offices or the Office of the Mayor on 3810 6201.

CONTACT YOUR COUNCILLOR

(address details inside)

MAYOR Paul Pisasale
Office (07) 3810 6201

Div 1 David Morrison
Office (07) 3818 3100
Email dmorrison@ipswich.qld.gov.au

Div 2 Paul Tully
Goodna Office (07) 3818 6900
Email ptully@ipswich.qld.gov.au

Div 3 Victor Attwood
Office (07) 3288 5899
Email vattwood@ipswich.qld.gov.au

Div 4 Bruce Casas
Office (07) 3816 2444
Email bcasas@ipswich.qld.gov.au

Div 5 Heather Morrow
Office (07) 3281 8700
Email hmorrow@ipswich.qld.gov.au

Div 6 Cheryl Bromage
Office (07) 3810 6556
Email cbromage@ipswich.qld.gov.au

Div 7 Andrew Antonioli
Office (07) 3810 6224
Email aantonioli@ipswich.qld.gov.au

Div 8 Charlie Pisasale
Office (07) 3282 9600
Email cpisasale@ipswich.qld.gov.au

Div 9 Sheila Ireland
Office (07) 3810 6231
Email sireland@ipswich.qld.gov.au

Div 10 David Pahlke
Office (07) 5464 1088
Email dpahlke@ipswich.qld.gov.au